

Howard County

Mini 4-H Handbook



 To Make The Best 
BETTER



Table of Contents

Howard County Office Staff & Mini 4-H Leaders.....	3
The 4-H Basics.....	4
What is Mini 4-H?	5
Mini 4-H Policies.....	6-7
<u>Projects</u>	
Aerospace.....	7
Beef.....	8
Bicycle.....	8
Bugs.....	9
Cat.....	9
Collections.....	10
Cookie Decorating.....	10
Crafts.....	11
Dog.....	11
Fire Safety.....	12
Flowers.....	12
Foods.....	13
Forestry.....	13
Garden.....	14
Genealogy.....	14
Goats.....	15
Health.....	15
Horse & Pony.....	16
Models.....	16
"Lego"-Type Models.....	17
Llamas/Alpacas.....	17
Pets.....	18
Photography.....	19
Pigeons.....	19
Poultry.....	19
Rabbits.....	20
Reading.....	20
Recycling.....	21
Scrapbooking.....	21
Sewing.....	22
Sheep.....	22
Space.....	23
Sports.....	23
Swine.....	24
Wildlife.....	24

Purdue Extension - Howard County

Office Staff

JOSHUA WINROTTE - Area 8 Director, 4-H Youth Development Extension Educator

ALLISON HILLIS - CED, Health & Human Sciences Extension Educator

MATHIAS INGLE - Agriculture & Natural Resources Extension Educator

PEGGY MCMINN - 4-H Program Assistant

STACY CLAXTON - Office Manager

KERRIGAN BARTRUM - 4-H Secretary

PURDUE EXTENSION - HOWARD COUNTY

Jeff Stout Government Center

120 East Mulberry Street, Suite 105

Kokomo, Indiana 46901-4660

Telephone: 765-456-2313

Email: howardces@purdue.edu

WEBSITE: <http://www.extension.purdue.edu/howard>

FACEBOOK: Purdue Extension - Howard County

Office Hours

Monday-Friday

8:00 A.M.-4:00 P.M.

Mini 4-H Leaders

Leslie Alexander..... (765) 434-5517

Maggie Guyer..... (765) 432-1899

Alesia Freeman..... (765) 860-4174

Jean Heaton..... (765) 513-0637

Becky Lewis

Keith Waddelow



THE 4-H EMBLEM

A four-leaf clover with the letter "H" on each leaflet meaning the development of HEAD, HEART, HANDS, and HEALTH is the official 4-H Club emblem.

THE COLORS

Green (the clover) - nature's most common color is emblematic of springtime, life and youth.

White (the H's) - symbolizes purity and high ideals

THE PLEDGE

I pledge my HEAD to clearer thinking,
my HEART to greater loyalty,
my HANDS to larger service,
and my HEALTH to better living, for my club,
my community, my country, and my world.

THE 4-H CLUB MOTTO

"TO MAKE THE BEST BETTER"

THE 4-H SLOGAN

"LEARN BY DOING"

What is Mini 4-H?

The Mini 4-H Program in Howard County is designed specifically for youth in Kindergarten through 2nd grade on January 15th of the current year. Mini 4-H members will be able to explore several project areas that interest them at a noncompetitive level. Projects can then be displayed at the Howard County 4-H Fair and be awarded a special Mini 4-H ribbon for projects completed.

Mini 4-H serves as an introduction to the 4-H program. Mini 4-H members are able to gain self-confidence and increase their self-esteem. Mini 4-H provides youth guidance while learning a variety of skills. Youth develop pride and skills in their ability to complete and display their projects. The intent is to allow the Mini 4-H member to have fun, enhance youth development and readiness for 4-H participation.

Mini 4-H Requirements:

1. Enrolled in Kindergarten, 1st , and 2nd grades on January 15th of the current year
2. Complete registration on v2.4honline.com
3. Attend Mini 4-H Club meetings or camps when possible
4. Complete and submit a record sheet for each project at the time of check-in at the fair

Manuals for every project are available at the Extension Office.

Poster Requirements:

1. Poster exhibits must have the standardized exhibit card in the lower right hand corner. Please allow room for the exhibit card with the dimension of height 5 1/2 " x width 4 1/4".
2. Posters should be 22" x 28" and DISPLAYED HORIZONTALLY, not vertically.
3. Posters must be self-supporting. Use heavy cardboard, plywood, or pegboard for stiffness.
4. Posters should be titled in some way to include the project name.
5. All posters MUST be covered with clear plastic. Sleeves are available for purchase from the Howard County Extension Office.

Mini 4-H Policies

I. Safety Policy for Mini 4-H Members

The safety and well being of our 4-H youth is of the utmost importance. Although kindergarten is specified as the time when a child may begin participation in some 4-H events and activities, parents are encouraged to take into consideration their child's physical and mental development before agreeing to let the child begin to show, work with, or care for animals. Each child matures at a different rate, and children in grades K-2 may still be too young to begin showing, working with, or caring for animals.

The State 4-H Youth Program at Purdue University has agreed to allow Mini 4-H members in grades K-2 to participate in some animal projects subject to certain conditions. These conditions are specified below.

Each county may determine its own NON-COMPETITIVE programs, classes, and participation requirements subject to the following safety guidelines:

Mini 4-H members, in grades K through 2, will be allowed to show, work with, or care for animal projects after their parent or legal guardian has signed a liability release. Mini 4-H members may independently show, work with, or care for animals that weigh 300 pounds or less. Mini 4-H members may only show, work with, or care for animals over 300 pounds when they are assisted by a parent, legal guardian, or another adult designated in writing by parent or legal guardian. (The word assisted means that the adult has control of the animal at all times.)

Mini 4-H members exhibiting horses must wear ASTM or SEI standard F1163 (or above) certified helmets whenever mounted. The parent/guardian is responsible to see that this specified headgear is properly fitted with the approved harness in place and fastened whenever a rider is mounted.

If the guidelines stated in this policy are not followed for a particular event or activity, then such event or activity shall not be considered to be a 4-H event or activity and shall not be under the auspices of Extension 4-H educators or covered by Purdue University.

II. Mini 4-H Non-Competitive Policy

Mini 4-H is a program designed to encourage positive development of children, kindergarten through second grade. The goal of Mini 4-H is to help young children explore friendships outside the family; explore the way in which things work; practice both small and large muscle control; and think about the ways people work together on projects.

Mini 4-H Policies

I. Mini 4-H Non-Competitive Policy (cont.)

The NON-COMPETITIVE learning environment for Mini 4-H includes:

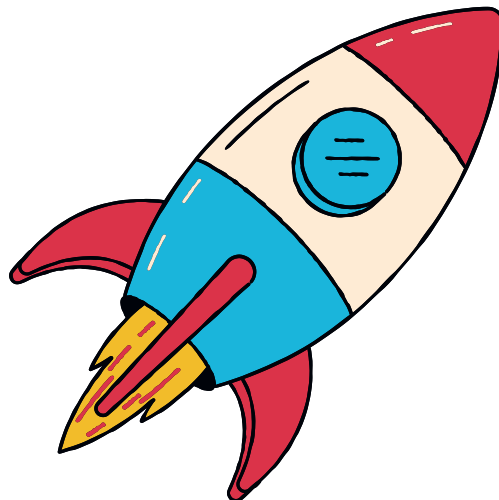
1. Planned learning activities in which children are invited to be active and explore materials and ideas without the pressure of completing a specific product or exhibit.
2. Low adult/leader to child ratio that allows time for adults/leaders to provide individual, positive encouragement and assistance.
3. Simple, interesting activities that are fun.
4. Encouragement of children to participate in a group activity by sharing and or displaying their activity projects.
5. Rewards that are identical and/or ribbons of the same color for everyone.

DO NOT JUDGE projects, but instead discuss them with the child.

Aerospace

Exhibit:

1. Make a rocket from a purchased kit. Learn how to glue, paint, and finish a rocket.
2. Complete and turn in Mini 4-H Record Sheet.



Beef

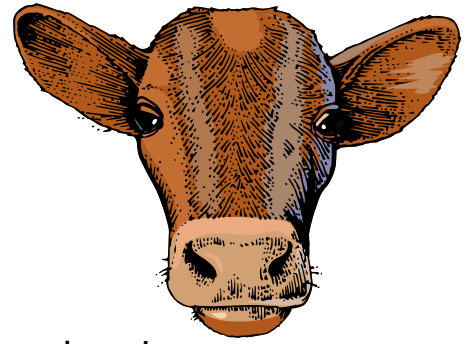


Exhibit:

I. Exhibit one of the following:

A. A poster or notebook on:

- i. Pictures of beef cows like snapshots, magazine pictures, drawings.
- ii. Your favorite breed of beef cow. Include a picture, short description and an explanation of why it is your favorite beef cow.
- iii. Products we get from beef cows.
- iv. Overview of beef well-being and care.

B. Show a beef animal at the fair in a special showmanship class.

- i. Your *Mini 4-H Liability Release Form* must be signed and turned into the Extension Office.
- ii. The Mini 4-H member must make prior arrangements with a regular 4-H beef member (usually a friend or relative) to work with one of their beef animals to show in the Mini 4-H showmanship class.
- iii. The Mini 4-H member **DOES NOT** bring their own animal to the fair!

2. Complete and turn in Mini 4-H Record Sheet.

Bicycle

Exhibit:

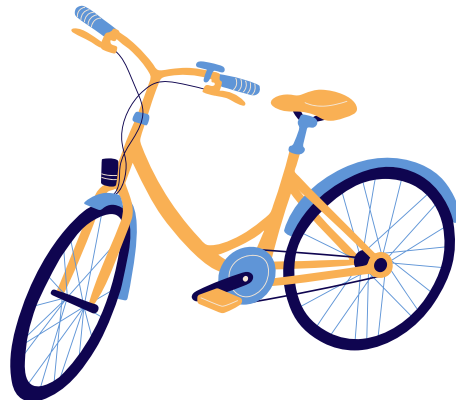
I. Exhibit one of the following:

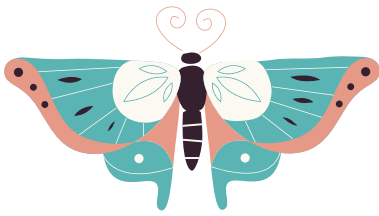
A. A poster or notebook on:

- i. A topic described in the manual.
- ii. Draw a picture of a bicycle and label the parts.

B. Participate in the county Bicycle Rodeo. Contact the Extension Office for details.

2. Complete and turn in Mini 4-H Record Sheet.





Bugs



Exhibit:

1. A poster or notebook on one of the following:

- A. Your favorite insect or spider; make sure to label the body parts.
- B. Draw a picture of a butterfly. Be sure to make the designs on the wings symmetrical.
- C. Show some of the ways bugs protect themselves.
- D. Display several kinds of bugs and/or spiders; you may draw the pictures or cut them out of magazines.
- E. Make several kinds of bugs. Use them to make a mobile of moving creepy crawlies.
- F. Use a shoebox to create a diorama for your bug. Use things from nature to make it realistic.

2. Complete and turn in Mini 4-H Record Sheet.

Cat



Exhibit:

1. Exhibit one of the following:

- A. A notebook on (check your Mini 4-H Cat Manual for full project requirements):
 - i. Kindergarten—Color pictures of five breeds of cats.
 - ii. First Grade—Add to your notebook from kindergarten with some pictures of equipment used in raising cats.
 - iii. Second Grade—Add to your notebook from the previous years with the completed conformation sheet from your Mini 4-H Cat manual and a short story about your cat.
- B. Show a cat at the fair in a special showmanship class. You may show a sibling's animal or another 4-H'ers cat with permission.

PLEASE NOTE:

- i. All cats are required to have the follow inoculations before they will be allowed to enter the 4-H Cat Show: distemper, rabies, panleukopenia, rhinotracheitis, and calicivirus. Cats must also have been tested for feline leukemia within 180 days prior to the day of exhibiting. Vaccination forms are available at the Extension Office.
- ii. Your *Mini 4-H Liability Release Form* must be signed and turned into the Extension Office.

2. Complete and turn in Mini 4-H Record Sheet.

Collections

Exhibit:

1. Exhibit one of the following:

A. Collect and exhibit 5 items or 5 pairs of items. Complete your Mini 4-H Collections Log Sheet by including every item in your collection. This record sheet should be updated every year to include new items added to your collection.

B. Talk to family and friends. Ask them what they like to collect and why they like to collect it. Then make a chart to show your information.

2. Complete and turn in Mini 4-H Record Sheet.

PLEASE NOTE: Valuable collections should NOT be brought to exhibit. In place of the collection, you may leave a notebook of pictures.

Cookie Decorating

Exhibit:

1. Exhibit one of the following:

A. A poster or notebook showing basic cookie decorating skills.

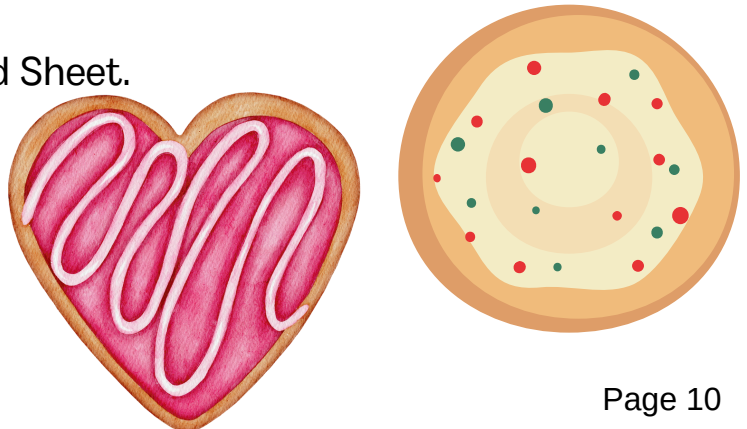
B. A poster or notebook showing different cookies you have decorated with a description of each of them.

C. Three (3) decorated cookies on a covered, disposable, 9" plate based on your division.

ii. Division 1 or 2: Cookies with frosting and sprinkles and/or candy on top of each one.

iii. Division 2 or 3: Cookies with frosting, smooth on top and have a border made of with either frosting and/or candy. (This is recommended for 2nd grade Mini 4-H'ers.)

2. Complete and turn in Mini 4-H Record Sheet.



Crafts



Exhibit:

1. Exhibit one of the following:

A. A drawing/painting picture with stiff backing and ready to hang. Size should be 8½" x 11" or smaller.

B. A craft such as collage, clothespin dolls, spatter painting, map making, scrapbooks, masks, puzzles, rubbings, mobiles, needlepoint, weaving, or sun catchers.

C. Any basic and simple craft.

2. Complete and turn in Mini 4-H Record Sheet.

Dog

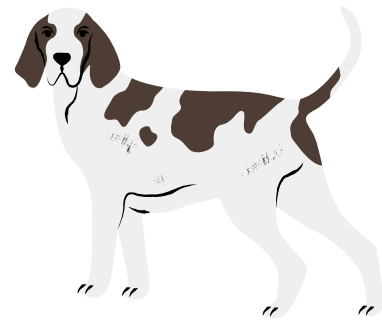


Exhibit:

1. Exhibit one of the following:

A. A poster or notebook on:

i. Pictures of dogs like snapshots, magazine pictures, or drawings.

ii. Your favorite breed of dog. Include a picture, short description, and an explanation of why it is your favorite dog.

B. Show a dog at the fair in a special showmanship class.

i. The Mini 4-H member may show their dog OR make arrangements with a regular 4-H dog member (usually a friend or relative) to work with their dog to show in the Mini 4-H showmanship class. All dogs MUST at least six months of age.

NOTE: All dogs are required to have the follow inoculations before they will be allowed to enter the 4-H Dog Show: distemper, rabies, hepatitis, parvovirus, leptospirosis, and kennel cough. Vaccination forms are available at the Extension Office.

ii. Your *Mini 4-H Liability Release Form* must be signed and turned into the Extension Office.

2. Complete and turn in Mini 4-H Record Sheet.

Fire Safety



Exhibit:

1. Exhibit a poster or notebook on one of the following:

- A. A topic described in the manual.
- B. Visit a fire station and talk with a firefighter. Share your story.
- C. Visit the Red Cross and find out what they do to help families affected by fire.

Share your story.

2. Complete and turn in Mini 4-H Record Sheet.

Flowers

Exhibit:

1. Exhibit one of the following:

A. Three cut flowers in a vase. The flowers may be the same kind or different kinds. Attach a small label that tells the kind of flower.

B. A flowering plant in a pot. Attach a small label that tells the kind of flowering plant.

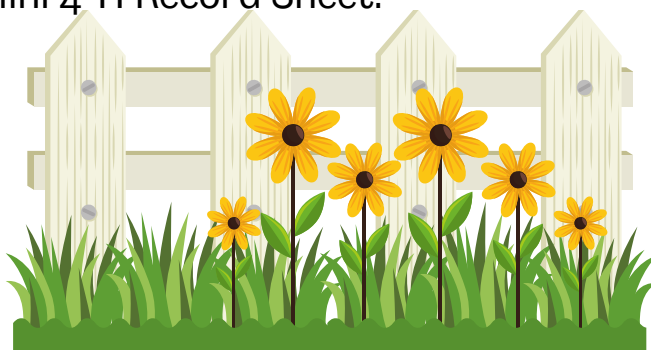
C. A house plant. Attach a small label that tells the kind of plant.

D. A "colored" flower. See Activity 6 in your Mini 4-H manual for details.

E. A poster that shows the different parts of a plant or flower.

F. A notebook containing at least three different kinds of flowers. Make sure to label your flowers.

2. Complete and turn in Mini 4-H Record Sheet.





Foods

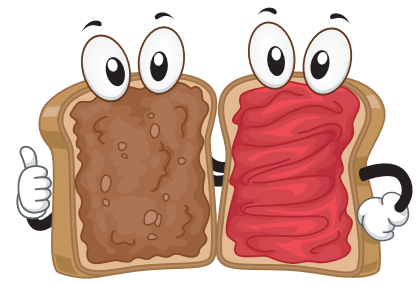


Exhibit:

1. Exhibit one of the following:

- A. A peanut butter sandwich cut into two or four pieces. Use two slices of bread, peanut butter, and your choice of an added ingredient.
 - B. A popcorn snack displayed in a small plastic sandwich bag. Start with popped corn and add other ingredients to make it your own.
 - C. Two no-baked cookies using the recipe in your Mini 4-H Foods Manual.
 - D. Display a poster you made that shows at least three kitchen safety rules.
 - E. Display a poster you made that shows the five food groups displayed on my plate from myplate.org. Show examples of what you would put on my plate to have a balanced diet. Be sure to follow the poster requirements listed in the Mini 4-H Handbook.
 - F. Two marshmallow treat squares using the recipe in your Mini 4-H foods manual.
2. Complete and turn in Mini 4-H Record Sheet.

Forestry

Exhibit:

1. Exhibit one of the following:

- A. Visit a lumberyard. Display your findings; check manual for guidelines.
 - B. Make an art collage out of things collected on a walk in the woods.
 - C. Go on an alphabet scavenger hunt. Look for things in the forest that begin with each letter of the alphabet. Make an alphabet book using the items you find.
 - D. Display things people can do to help trees or show things people use that come from trees.
 - E. Write a story or poem about your favorite tree.
2. Complete and turn in Mini 4-H Record Sheet.



Garden

Exhibit:

1. Exhibit one of the following:

A. A plate with a maximum of three vegetables.

B. A scrapbook of pictures of different types of vegetables. Label each vegetable with its name.

C. One plant in a pot no larger than 10 inches in diameter. You must have taken care of your plant for at least two (2) months before judging.

2. Complete and turn in Mini 4-H Record Sheet.



Genealogy

Exhibit:

1. Exhibit one of the following:

A. Color, complete, and exhibit the *My Family Tree* chart in your Mini 4-H Genealogy manual.

B. Make a poster of your family tree using pictures or other information.

2. Complete and turn in Mini 4-H Record Sheet.



Goats (Boer, Dairy, & Pygmy)

Exhibit:

I. Exhibit one of the following:

A. A poster or notebook on:

- i. Pictures of goats like snapshots, magazine pictures, or drawings.
- ii. Your favorite breed of goat. Include a picture, short description and an explanation of why it is your favorite goat.
- iii. Products we get from goats.
- iv. Overview of goat well-being and care.

B. Show a goat at the fair in a special showmanship class.

- i. Your *Mini 4-H Liability Release Form* must be signed and turned into the Extension Office.
- ii. The Mini 4-H member must make prior arrangements with a regular 4-H goat member (usually a friend or relative) to work with one of their goats to show in the Mini 4-H showmanship class.
- iii. The Mini 4-H member DOES NOT bring their own goat to the fair!

2. Complete and turn in Mini 4-H Record Sheet.

Health



Exhibit:

I. Exhibit a poster or notebook on one of the following:

- A. Be Active—such as reasons to be active, ways to be active, etc.
- B. Eat Smart—such as smart snacks, portion sizes, etc.
- C. Eliminate Germs—such as good dental care, proper hand washing, etc.

2. Complete and turn in Mini 4-H Record Sheet.



Horse & Pony

Exhibit:

I. Exhibit one of the following:

A. A poster or notebook on:

- i. Pictures of horses like snapshots, magazine pictures, or drawings
- ii. Your favorite breed of horse. Include a picture, short description and an explanation of why it is your favorite horse.
- iii. Horse equipment used.
- iv. Overview of horse well-being and care.

B. Show a horse at the fair during the month of June in a special showmanship class.

- i. Your *Mini 4-H Liability Release Form* must be signed and turned into the Extension Office.
- ii. The Mini 4-H member must make prior arrangements with a regular 4-H horse member (usually a friend or relative) to work with one of their horses to show in the Mini 4-H showmanship class.
- iii. The Mini 4-H member DOES NOT bring their own horse to the fair!

2. Complete and turn in Mini 4-H Record Sheet.



Models

Exhibit:

1. Make a model from a purchased kit. Learn how to glue, paint, and finish a model.
2. Complete and turn in Mini 4-H Record Sheet.

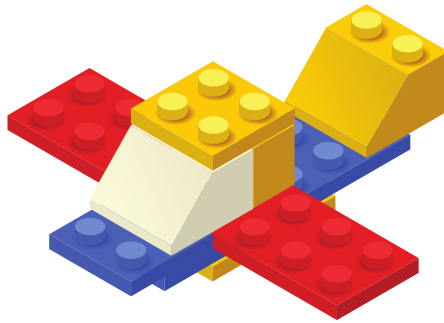


LEGO- Type Models

Exhibit:

1. Make a model using any type of LEGO pieces. Keep it simple. Purchased kits may be used.
2. All LEGO-type models must be mounted on a flat solid base of Styrofoam, plywood or other materials. LEGO plates are not considered a solid base.
3. Complete and turn in Mini 4-H Record Sheet.

PLEASE NOTE: The use of the word LEGO is used only as a guide for the project. You are free to use any brand of plastic snap-together or connecting pieces to complete your project.



Llamas/Alpacas

Exhibit:

1. Exhibit one of the following:
 - A. Make a notebook or a poster
 - i. About your favorite breed and why it is your favorite.
 - ii. How to care for the llama like feeding, equipment needs or grooming.
 - iii. Identifying parts of a llama.
 - iv. Equipment needed to show a llama.
 - B. Show a llama in Mini Halter Class.
2. Complete and turn in Mini 4-H Record Sheet.



Pets

Exhibit:

1. Exhibit one of the following:

A. Make a scrapbook or a poster about your special pet. Be sure to include the information list in your Mini 4-H project manual about your pet.

B. Make a poster, notebook, or display overviewing pet care and well-being.

2. Complete and turn in Mini 4-H Record Sheet.



Photography

Exhibit:

1. Exhibit the following according to your number of years in the project:

A. First Year—Exhibit five prints of non-moving objects such as landscapes, buildings, and/or scenery.

B. Second Year—Exhibit eight prints, two of which are slow moving shots of animals, people, etc., and the other six of your choice.

C. Third Year—Exhibit either ten prints of your choice OR one 8X10 matted print of your choice.

2. Complete and turn in Mini 4-H Record Sheet.



Pigeons

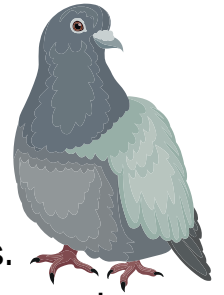


Exhibit:

I. Exhibit one of the following:

A. A poster or notebook on:

- i. Pictures of pigeons like snapshots, magazine pictures, or drawings.
 - ii. Your favorite breed of pigeons. Include a picture, short description, and an explanation of why it is your favorite pigeon.
 - iii. Overview of pigeon well-being and care.
- B. Show a pigeon at the fair in a special showmanship class.
- i. Your *Mini 4-H Liability Release Form* must be signed and turned into the Extension Office.
 - ii. The Mini 4-H member must make prior arrangements with a regular 4-H pigeon member (usually a friend or relative) to work with one of their pigeons to show in the Mini 4-H showmanship class.
 - iii. The Mini 4-H member DOES NOT bring their own pigeon to the fair!

2. Complete and turn in Mini 4-H Record Sheet.

Poultry



Exhibit:

I. Exhibit one of the following:

A. A poster or notebook on:

- i. Pictures of chickens, ducks, and/or turkeys like snapshots, magazine pictures, or drawings.
 - ii. Your favorite breed of poultry. Include a picture, short description and an explanation of why it is your favorite chicken, duck, or turkey.
 - iii. Overview of poultry well-being and care.
- B. Show a chicken at the fair in a special showmanship class.
- i. Your *Mini 4-H Liability Release Form* must be signed and turned into the Extension Office.
 - ii. The Mini 4-H member must make prior arrangements with a regular 4-H poultry member (usually a friend or relative) to work with one of their chickens to show in the Mini 4-H showmanship class.
 - iii. The Mini 4-H member DOES NOT bring their own chicken to the fair!

2. Complete and turn in Mini 4-H Record Sheet.

Rabbits

Exhibit:

I. Exhibit one of the following:

A. A poster or notebook on:

- i. Pictures of rabbits like snapshots, magazine pictures, or drawings.
- ii. Your favorite breed of rabbit. Include a picture, short description and an explanation of why it is your favorite rabbit.
- iii. Products we get from rabbits.
- iv. Overview of rabbit well-being and care.

B. Show a rabbit at the fair in a special showmanship class.

- i. Your *Mini 4-H Liability Release Form* must be signed and turned into the Extension Office.
- ii. The Mini 4-H member must make prior arrangements with a regular 4-H rabbit member (usually a friend or relative) to work with one of their rabbits to show in the Mini 4-H showmanship class.

- iii. The Mini 4-H member DOES NOT bring their own rabbit to the fair!
2. Complete and turn in Mini 4-H Record Sheet.



Reading

Exhibit:

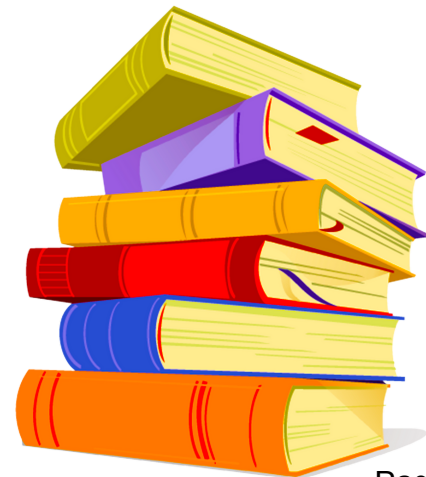
I. Exhibit may be a poster, notebook, diorama or other creative item on one of the following:

A. Your favorite book

B. An author you like

C. An encouragement to get people to read

2. Complete and turn in Mini 4-H Record Sheet.



Recycling

Exhibit:

1. Exhibit may be one of the following:

A. A poster or notebook showing what you learned about recycling.

B. An item made from another item that otherwise would have been thrown away.

2. Complete and turn in Mini 4-H Record Sheet.



Scrapbook

Exhibit:

1. Exhibit a scrapbook of no more than six total pages on a topic or event of your choice. Front and back are counted as 2 pages.

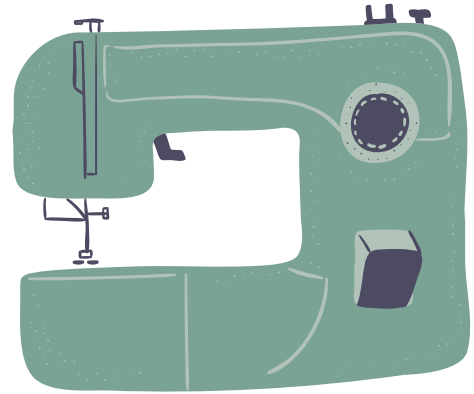
2. Complete and turn in Mini 4-H Record Sheet.



Sewing

Exhibit:

- I. Exhibit one of the following from your manual:
 - A. Sewing Kit—may be the kit with pictures for the items, a poster, or a notebook
 - B. Pin Cushion—without the pins
 - C. Fringe Scarf
 - D. A button sewn on by you
 - E. Throw Pillow
 - F. Tissue Cover
 - G. Placemat
 - H. Tote Bag
 - I. BBQ Apron
 - J. Machine Stitch Practice—exhibited as a poster or notebook
2. Complete and turn in Mini 4-H Record Sheet.



Sheep

Exhibit:

- I. Exhibit one of the following:
 - A. A poster or notebook on:
 - i. Pictures of sheep like snapshots, magazine pictures, or drawings.
 - ii. Your favorite breed of sheep. Include a picture, short description, and an explanation of why it is your favorite sheep.
 - iii. Products we get from sheep.
 - iv. Overview of sheep well-being and care.
 - B. Show a sheep at the fair in a special showmanship class.
 - i. Your *Mini 4-H Liability Release Form* must be signed and turned into the Extension Office.
 - ii. The Mini 4-H member must make prior arrangements with a regular 4-H sheep member (usually a friend or relative) to work with one of their sheep to show in the Mini 4-H showmanship class.
 - iii. The Mini 4-H member DOES NOT bring their own sheep to the fair!
2. Complete and turn in Mini 4-H Record Sheet.



Space

Exhibit:

1. Exhibit one of the following:

- A. Make a solar system mobile. You may use any materials that you want. Make sure that you label each planet.
- B. Exhibit the asteroid that you made in Activity 3.
- C. Exhibit the comet that you made in Activity 4.
- D. Make a model or poster of the shuttle. Label the main parts of the shuttle.
- E. Make a poster showing one or two different constellations.
- F. Make a poster about one or two planets. Make sure to label the planets and tell something about them.
- G. Make a poster about Planet X. Be creative! If you were going to visit this planet, what would you find?

2. Complete and turn in Mini 4-H Record Sheet.



Sports

Exhibit:

1. Exhibit a poster or notebook on one of the following:

- A. Five photographs of you participating in a particular sport you have chosen OR five pictures of your favorite star player from that sport.
- B. Five specific facts about the particular sport you have chosen. See your Mini 4-H manual for more details and examples.
- C. Three star or professional players in the particular sport you have chosen.

2. Complete and turn in Mini 4-H Record Sheet.



Swine

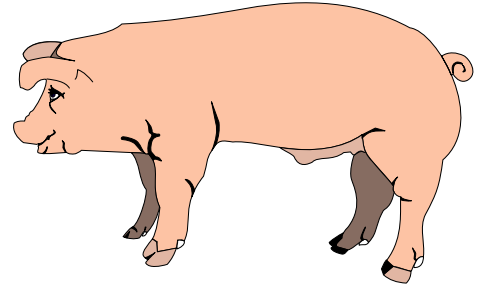


Exhibit:

I. Exhibit one of the following:

A. A poster or notebook on:

- i. Pictures of pigs like snapshots, magazine pictures, or drawings.
- ii. Your favorite breed of pig. Include a picture, short description and an explanation of why it is your favorite pig.
- iii. Products we get from pigs.
- iv. Overview of swine well-being and care.

B. Show a pig at the fair in a special showmanship class.

- i. Your *Mini 4-H Liability Release Form* must be signed and turned into the Extension Office.
- ii. The Mini 4-H member must make prior arrangements with a regular 4-H swine member (usually a friend or relative) to work with one of their pigs to show in the Mini 4-H showmanship class.
- iii. The Mini 4-H member DOES NOT bring their own pig to the fair!

2. Complete and turn in Mini 4-H Record Sheet.

Wildlife

Exhibit:

I. Exhibit one of the following:

A. Poster or notebook on:

- i. Birds
- ii. Bird Watching Chart
- iii. Animal Characteristics
- iv. Any Wildlife Habitat

B. Bird Mobile

C. Bird Feeder

D. Three Insects

2. Complete and turn in Mini 4-H Record Sheet.

