



Howard County Mini 4-H Handbook

 To Make The Best 
BETTER





THE 4-H EMBLEM

A four-leaf clover with the letter "H" on each leaflet meaning the development of HEAD, HEART, HANDS, and HEALTH is the official 4-H Club emblem.

THE COLORS

Green (the clover) - nature's most common color is emblematic of springtime, life and youth.

White (the H's) - symbolizes purity and high ideals

THE PLEDGE

I pledge my HEAD to clearer thinking,
my HEART to greater loyalty,
my HANDS to larger service,
and my HEALTH to better living,
for my club, my community,
my country, and my world.

THE 4-H CLUB MOTTO

"TO MAKE THE BEST BETTER"

THE 4-H SLOGAN

"LEARN BY DOING"

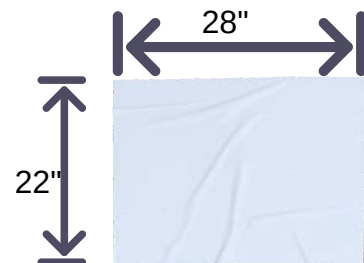
What is Mini 4-H?

The Mini 4-H Program in Howard County is designed specifically for youth in kindergarten through second grade of the current academic year. Mini 4-H members will be able to explore several project areas that interest them at a noncompetitive level. Projects may be displayed at the Howard County 4-H Fair and be awarded a special Mini 4-H ribbon.

Mini 4-H serves as an introduction to the 4-H program. Mini 4-H members can gain self-confidence and increase their self-esteem. Mini 4-H provides youth guidance while learning a variety of skills. Youth develop pride and skills in their ability to complete and display their projects. The intent is to allow the Mini 4-H member to have fun and enhance youth development and readiness for 4-H participation.

Mini 4-H Requirements:

1. Enrolled in kindergarten, first, or second grade of the current academic year
2. Register on v2.4honline.com
3. Attend Mini 4-H club meetings or camps, when possible



Poster Requirements:

1. Posters must be displayed horizontally and measure 22" x 28".
2. To provide support, you may use heavy cardboard, plywood, foam board, or pegboard behind the poster. Foam board for backing can be purchased at the Howard County Extension Office.
3. It is mandatory that all posters be covered with clear plastic, which can also be purchased at the office in the form of clear plastic sleeves.
4. Please ensure that your poster is titled to include the project name.

Mini 4-H Policies

I. Mini 4-H Non-Competitive Policy

The Mini 4-H program is designed for children in kindergarten through second grade to explore friendships, learn how things work, and practice small and large muscle control. The non-competitive learning environment includes planned activities where children can explore without pressure, a low adult-to-child ratio for individual attention, simple and fun activities, encouraging participation in group activities, and rewards that are identical for everyone.

II. Safety Policy for Mini 4-H Members

The safety and well-being of 4-H youth is of the utmost importance. While kindergarten is the age at which children can begin participating in 4-H events and activities, parents are encouraged to consider their child's physical and mental development before allowing them to show, work with, or care for animals.

The State 4-H Youth Program at Purdue University has allowed Mini 4-H members in grades K-2 to participate in animal projects, subject to certain conditions specified by each county.

Mini 4-H members in grades K-2 must have a liability release signed by their parent or legal guardian before being able to independently show, work with, or care for animals weighing 300 pounds or less. If the animal weighs over 300 pounds, the child must be assisted by a parent, legal guardian, or adult designated in writing by the parent or legal guardian. The adult must have control of the animal at all times.

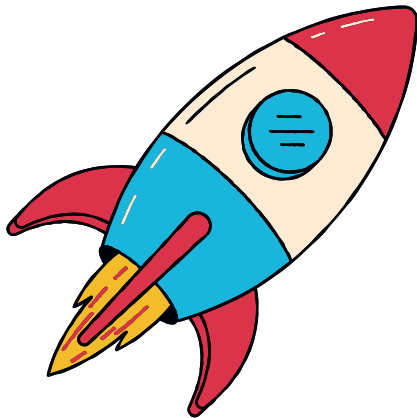
Mini 4-H members exhibiting horses must wear ASTM or SEI standard-certified helmets whenever mounted. The parent/guardian must ensure that the specified headgear is properly fitted with the approved harness in place and fastened whenever the rider is mounted.

If the guidelines in this policy are not followed, any event or activity will not be considered to be a 4-H event or activity and will not be under the auspices of Extension 4-H educators or covered by Purdue University.

Aerospace

Exhibit a rocket.

Make a rocket from a purchased kit learning how to glue, paint, and finish it.



Beef

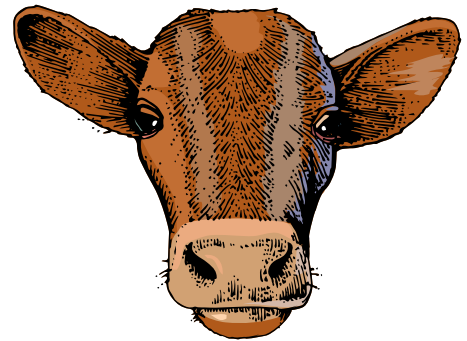


Exhibit one of the following:

1. A poster or notebook that displays:
 - a. Pictures of different beef cows such as snapshots, magazine pictures, and drawings.
 - b. A picture and a brief description of your favorite beef cow breed, along with an explanation of why it is your favorite and any other relevant information.
 - c. A list of products we get from beef cows.
 - d. Information on beef well-being and care.
2. You may show a beef animal in the special 4-H Mini showmanship class at the fair. To do so, Mini 4-H members must make arrangements with a 4-H beef member (usually a friend or relative) to work with one of their beef animals. Please note that Mini 4-H members are not allowed to bring their own beef animal.

Your *Mini 4-H Liability Release Form* must be signed and turned in before judging.

**See poster requirements on page 3.*

Bicycle

Please choose one of the following options:

1. Create a poster or notebook that showcases either bicycle safety or labeled bicycle parts based on pictures or drawings.
2. Take part in the Bicycle Rodeo organized by the county. For more details, please reach out to the Extension Office.

**See poster requirements on page 3.*



Bugs



Please choose one of the following topics and create a poster or notebook about it:

1. Your favorite insect or spider. Label its body parts and describe its characteristics.
2. Draw or find a picture of a butterfly and make sure the designs on its wings are symmetrical.
3. Explain the different ways that bugs protect themselves. 4. Using drawings or pictures cut out of magazines, showcase several kinds of bugs and/or spiders.

Make bug-themed crafts such as a mobile of moving creepy crawlies or a realistic diorama from a shoebox and nature materials.

**See poster requirements on page 3.*

Cat



Please choose from one of the following options:

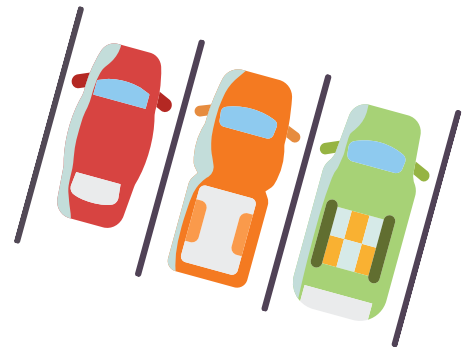
1. Create a notebook with the appropriate theme based on your grade level:
 - a. Kindergarten - Your notebook should include colored pictures of five different breeds of cats.
 - b. First Grade - Add to your notebook from kindergarten by including pictures of equipment used in raising cats.
 - c. Second Grade - Add a short story about your cat to last year's notebook.
2. Participate in the Mini 4-H showmanship class at the fair by showing your cat or working with a 4-H cat member (friend or relative) to show their cat.

NOTE: All cats are required to have the following inoculations before entering the 4-H Cat Show: distemper, rabies, hepatitis, parvovirus, leptospirosis, and kennel cough. Vaccination forms can be obtained from the Extension Office.

Your Mini 4-H Liability Release Form must be signed and turned in before judging.



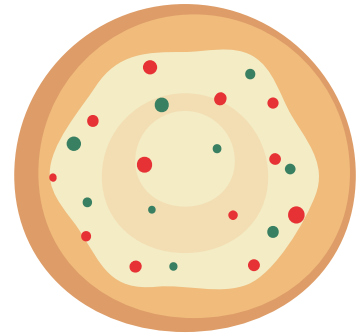
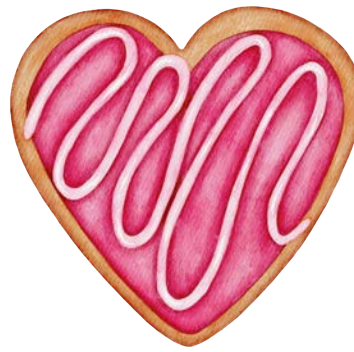
Collections



Please present one of the following exhibits:

1. Gather a collection of five items or five pairs of items and complete a Mini 4-H Collections Log Sheet provided by the Extension Office. Please update the record sheet annually to include any new items added to the collection.
2. Create a chart that showcases the information you have gathered by speaking with your family and friends about their preferred collections and reasons for collecting.

PLEASE NOTE: Valuable collections should NOT be brought to exhibit. In place of the collection, you may leave a notebook of pictures.



Cookie Decorating

Please choose from one of the following options:

1. Create a poster or notebook displaying your basic cookie decorating skills.
2. Create either a poster or a notebook that showcases a variety of cookies you have decorated, with a description for each.
3. Create three (3) decorated cookies on a disposable, covered 9-inch plate. The requirements for your cookies vary based on your division:
 - a. Division 1 or 2: Cookies should have frosting, sprinkles, and/or candy on top.
 - b. Division 2 or 3: Cookies should have smooth frosting on top with a border made of frosting and/or candy. This is recommended for 2nd-grade Mini 4-H members.

**See poster requirements on page 3.*

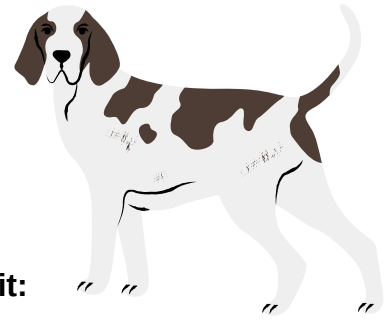
Crafts



Please present one of the following items:

1. A drawing or painting that is mounted on a stiff back and can be hung with a size of 8½" x 11" or smaller.
2. A craft, such as collage, clothespin dolls, painting, map-making, scrapbooks, masks, puzzles, rubbings, mobiles, needlepoint, weaving, or sun catchers
3. Any basic and simple craft

Dog



Please choose from one of the following options to exhibit:

1. Create a poster or notebook that showcases pictures of dogs, such as snapshots, magazine pictures, or drawings. Alternatively, you can choose your favorite breed of dog and include a picture, a short description, and an explanation of why it's your favorite.
2. Participate in the special Mini 4-H showmanship class at the fair by showing your dog or making arrangements with a 4-H dog member (usually a friend or relative) to show their dog. All dogs must be at least six months old.

NOTE: All dogs are required to have the following inoculations before they will be allowed to enter the 4-H Dog Show: distemper, rabies, hepatitis, parvovirus, leptospirosis, and kennel cough. You can obtain vaccination forms from the Extension Office.

Your Mini 4-H Liability Release Form must be signed and turned in before judging.

**See poster requirements on page 3.*

Flowers



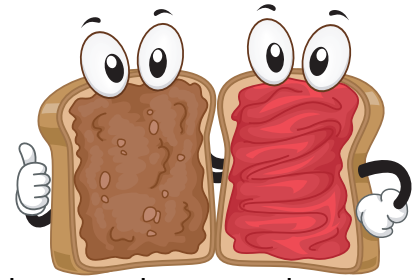
Please choose one of the following options to exhibit:

1. Display three cut flowers in a vase and attach a label identifying the type of flowers.
2. Display a flowering plant in a pot and attach a label identifying the type of plant.
3. Display a house plant and attach a label identifying the type of plant.
4. Display a poster that shows the different parts of a plant or flower.
5. Include at least three different kinds of labeled flowers in a notebook.

**See poster requirements on page 3.*



Foods



Please choose one of the following options to exhibit:

1. Prepare a peanut butter sandwich using two slices of bread, peanut butter, and an additional ingredient of your choice. Cut the sandwich into two or four pieces.
2. Create your own popcorn snack by including popped corn and another ingredient of your choice. Display it in a small plastic sandwich bag.
3. Make two no-bake cookies.
4. Prepare two marshmallow treat squares.
5. Create a poster that displays at least three kitchen safety rules.
6. Make a poster that shows the five food groups displayed on MyPlate from MyPlate.org. Include examples of what you would put on your plate to achieve a balanced diet.

**See poster requirements on page 3.*

Forestry

Please choose from one of the following options:

1. Create a visual display of your observations after visiting a lumberyard.
2. Craft an art collage using materials collected during a walk in the woods.
3. Make an alphabet book using forest items representative of each letter of the alphabet.
4. Create a display highlighting ways people can help trees or products that come from trees.
5. Write a story or poem about your favorite tree.



Garden

Please present one of the following options for exhibit:

1. A plate consisting of a maximum of three types of vegetables.
2. A scrapbook containing pictures of various vegetables, with the name of each vegetable labeled.
3. A potted plant not exceeding 10 inches in diameter, which you have nurtured at least two months prior to judging.



Genealogy

Please choose from one of the following options:

1. Use the *My Family Tree* chart provided by the Extension Office and add color to make it more visually appealing.
2. Create a poster of your family tree using pictures or other relevant information.

**See poster requirements on page 3.*



Goats (Boer, Dairy, & Pygmy)

Please choose from one of the following options:

1. Create a poster or notebook showcasing:
 - a. Pictures of goats, such as snapshots, magazine pictures, or drawings.
 - b. Your favorite breed of goat, including a picture, a short description, and an explanation of why it is your favorite.
 - c. Products we get from goats
 - d. Goat well-being and care
2. Participate in a special Mini 4-H showmanship class by showing a goat at the fair. Mini 4-H members should make arrangements with a 4-H goat member (usually a friend or relative) to work with one of their goats. Please note that Mini 4-H members should not bring their own goats!

Your *Mini 4-H Liability Release Form* must be signed and turned in before judging.

**See poster requirements on page 3.*



Health

Please create a poster or notebook about one of the following topics:

1. Being active, including reasons to be active and various ways to do so.
2. Eating smart, including information about smart snacking and portion sizes.
3. Eliminating germs, including tips on good dental care and proper hand washing.

**See poster requirements on page 3.*



Horse & Pony

Please choose one of the following options for your exhibit:

1. Create a poster or notebook that features any of the following:
 - a. Pictures of horses, such as snapshots, magazine pictures, or drawings.
 - b. Information on your favorite breed of horse, including a picture, short description, and explanation of why it is your favorite.
 - c. Details about horse equipment commonly used.
 - d. Information on horse well-being and care.
2. Participate in a special Mini 4-H showmanship class at the fair by showing a horse. Mini 4-H members must make arrangements with a 4-H horse member beforehand, usually a friend or relative, to work with one of their horses to show at the fair. Please note that Mini 4-H members are not allowed to bring their own horse.

Your *Mini 4-H Liability Release Form* must be signed and turned in before judging.

**See poster requirements on page 3.*



Models

Exhibit a model.

Learn how to assemble, paint, and finish a purchased model kit.



LEGO[®] -Type Models

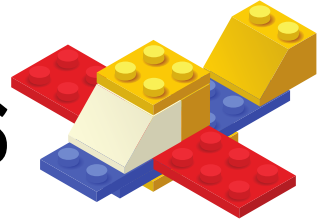


Exhibit a model using any type of LEGO pieces.

Create a LEGO model using any type of LEGO pieces or any brand of plastic snap-together or connecting pieces. You may use purchased kits and must mount your model on a flat, solid base made of Styrofoam, plywood, or other materials (LEGO plates are not considered a solid base).

PLEASE NOTE: The word LEGO is used only as a guide, and you are free to use any brand of plastic snap-together or connecting pieces to complete your project.

Llamas/Alpacas



Please select one of the options provided:

1. Create a notebook or a poster about:
 - a. Your favorite breed of llama/alpaca and the reasons behind your preference.
 - b. The proper care for llamas/alpacas, including feeding, equipment needs, and grooming.
 - c. Identifying different parts of a llama/alpaca
 - d. Equipment required for showing a llama/alpaca
2. You may participate in a special halter class for llamas/alpacas at the fair. To do so, you must arrange with a 4-H llama/alpaca member (usually a friend or relative) to work with one of their llamas/alpacas. Please note that Mini 4-H members should not bring their own llamas/alpacas to the show.

Your *Mini 4-H Liability Release Form* must be signed and turned in before judging.

**See poster requirements on page 3.*

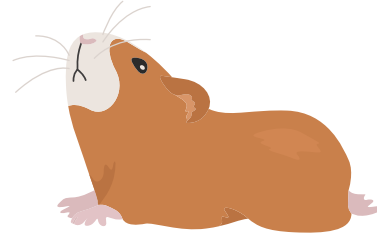
Pets



Please choose from one of the following options:

1. Create a scrapbook or poster highlighting your beloved pet.
2. Make a poster, notebook, or display about pet care and well-being.

**See poster requirements on page 3.*



Photography

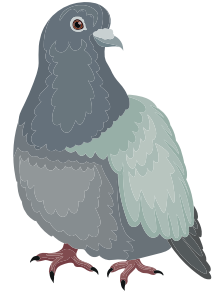
Exhibit the following on a poster according to the number of years in the project:

1. First Year—Display five prints of non-moving objects such as landscapes, buildings, or scenery.
2. Second Year—Showcase eight prints, including two slow-moving shots of animals or people, and six of your choice.
3. Third Year—Show either ten prints of your choice or one 8" X 10" matted print of your choice.

**See poster requirements on page 3.*



Pigeons



Please choose one of the following options for your exhibit:

1. Create a poster or notebook that includes:
 - a. Pictures of pigeons such as snapshots, magazine pictures, or drawings.
 - b. Your favorite breed of pigeon, along with a picture, a brief description, and an explanation of why it is your favorite.
 - c. Information on pigeon well-being and care.
2. Participate in a special Mini 4-H showmanship class at the fair by showcasing a pigeon.

To do this, Mini 4-H members need to make arrangements with a 4-H pigeon member (usually a friend or relative) to work with one of their pigeons. Please note that Mini 4-H members should not bring their own pigeons to the fair.

Your *Mini 4-H Liability Release Form* must be signed and turned in before judging.

**See Poster requirements on page 3.*

Poultry



Please choose one of the following options:

1. Create either a poster or a notebook featuring:
 - a. Snapshots, magazine pictures, or drawings of chickens, ducks, and/or turkeys.
 - b. Your favorite breed of poultry, including a picture, a brief description, and an explanation of why it is your favorite.
 - c. Information about poultry well-being and care.
2. Participate in a special Mini 4-H showmanship class by showing a chicken at the fair.

To do this, Mini 4-H members need to make arrangements with a 4-H poultry member (usually a friend or relative) to work with one of their poultry animals. Please note that Mini 4-H members should not bring their own poultry animals.

Your *Mini 4-H Liability Release Form* must be signed and turned in before judging.

**See poster requirements on page 3.*

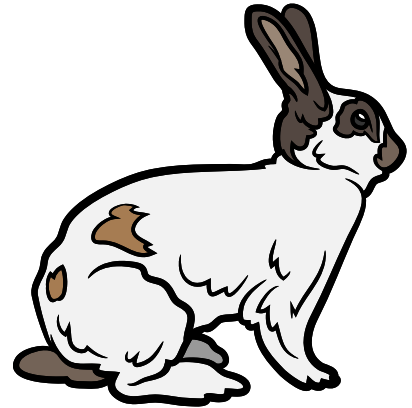
Rabbits

Please choose from one of the following options:

1. Create a poster or notebook showcasing any of the following:
 - a. Pictures of rabbits such as snapshots, magazine pictures, or drawings.
 - b. Your favorite rabbit breed with a picture, brief description, and explanation of why it is your favorite.
 - c. Products that can be obtained from rabbits.
 - d. Tips on taking care of rabbits and ensuring their well-being.
2. Participate in the Mini 4-H showmanship class by showcasing a rabbit at the fair. To do this, Mini 4-H members need to make arrangements with a 4-H rabbit member (usually a friend or relative) to work with one of their rabbits. Please note that Mini 4-H members are not allowed to bring their own rabbits.

Your *Mini 4-H Liability Release Form* must be signed and turned in before judging.

**See poster requirements on page 3.*



Reading

Create a poster, notebook, diorama, or any other creative item related to one of the following topics:

1. Your favorite book
2. An author you admire
3. An encouragement to inspire reading

**See poster requirements on page 3.*



Recycling

Please present one of the options below:

1. A poster or notebook showcasing your understanding of recycling.
2. An object created from a material that would have been discarded otherwise.

**See poster requirements on page 3.*



Scrapbook

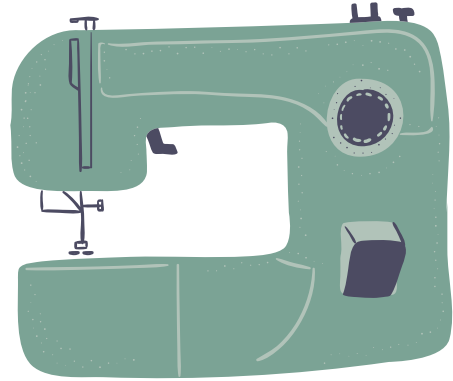
Present a scrapbook on a topic or event of your choice using six pages or fewer. Each side counts as a page.



Sewing

Please choose one of the following items to make and exhibit:

1. A sewing kit (you may use pictures instead of actual kit items).
2. A pin cushion (without the pins).
3. A fringe scarf.
4. A button that you have sewn on.
5. A throw pillow.
6. A tissue cover.
7. A placemat.
8. A tote bag.
9. A BBQ apron.
10. A machine stitch practice exercise (displayed as a poster or notebook).



Sheep

Please choose one of the following options for your exhibit:

1. Create a poster or notebook with any of the following topics:
 - a. Pictures of sheep, including snapshots, magazine pictures, or drawings.
 - b. Information about your favorite breed of sheep, including a picture, short description, and explanation of why it's your favorite.
 - c. Products that we get from sheep.
 - d. Information about sheep well-being and care.
2. Participate in the Mini 4-H showmanship class by showing a sheep at the fair. Mini 4-H members must make arrangements with a 4-H sheep member beforehand to work with one of their sheep. Please note that Mini 4-H members are not allowed to bring their own sheep.



Your *Mini 4-H Liability Release Form* must be signed and turned in before judging.

**See poster requirements on page 3.*

Space

Please choose one of the following items to exhibit:

1. A solar system mobile that includes labels for each planet and is made using a variety of materials.
2. An asteroid that you created.
3. A comet that you created.
4. A model or poster of a space shuttle that includes labels for its main parts.
5. A poster showcasing one or two different constellations.
6. A poster about one or two planets that includes labels for the planets and information about them.
7. A poster about an imaginary planet. Use your creativity to describe what someone might find if they were to visit this planet.

**See poster requirements on page 3.*



Sports

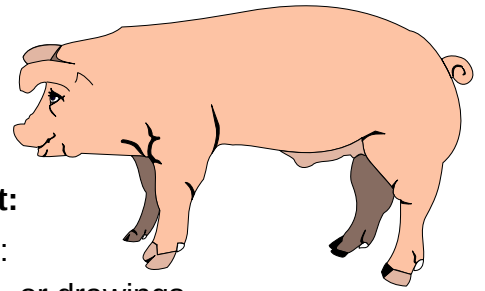
Exhibit a poster or notebook on one of the following:

1. Display five photographs of yourself participating in a sport of your choice, or five pictures of your favorite star player from that sport.
2. List five specific facts about the sport you have chosen.
3. Identify three star or professional players in the sport you have chosen.

**See poster requirements on page 3.*



Swine



Please choose one of the following options for your exhibit:

1. Create a poster or notebook on one of the following topics:
 - a. Pictures of pigs, including snapshots, magazine pictures, or drawings.
 - b. Your favorite breed of pig, including a picture, a short description, and an explanation of why it is your favorite.
 - c. Products that we get from pigs.
 - d. Swine well-being and care.

2. Participate in a special Mini 4-H showmanship class by showing a pig at the fair. Mini 4-H members must make arrangements with a 4-H swine member (typically a friend or relative) to work with one of their pigs for the show. Mini 4-H members are not allowed to bring their own pig!

Your *Mini 4-H Liability Release Form* must be signed and turned in before judging.

**See poster requirements on page 3.*

Wildlife

Please choose one of the following options:

1. Create a poster or notebook on one of the following topics:
 - a. Birds
 - b. Bird-watching chart
 - c. Animal characteristics
 - d. Any wildlife habitat

2. Make a bird mobile.

3. Build a bird feeder.

4. Collect and display three insects.



**See poster requirements on page 3.*

HOWARD COUNTY



Making the best better!



Extension - Howard County

120 E. Mulberry St., Suite 105,
Kokomo, IN 46901

Phone:
765-456-2313

Email:
howardce@purdue.edu

Find us online.



Howard County (purdue.edu)
<http://extension.purdue.edu/howard>



Like us on Facebook!
Purdue Extension - Howard County



Follow us on Instagram!
@howardces

Purdue University is an equal opportunity/equal access/affirmative action institution.