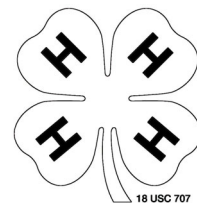
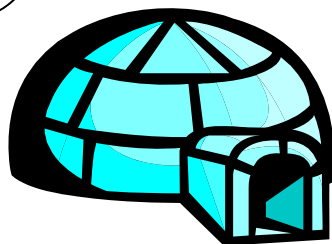
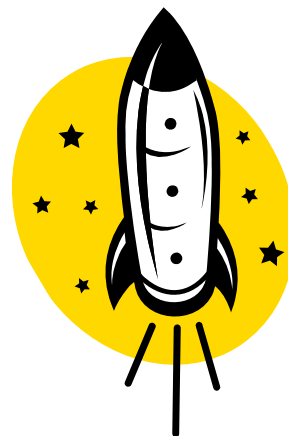


# Hendricks County

## Mini 4-H



# Models



Developed by:

Karla Smith, Program Assistant-Purdue Extension Hendricks County



# Mini 4-H Parent's Page

We welcome you and your child to the Mini 4-H program. Mini 4-H is for youth who are in either first or second grade during the current 4-H year. Mini 4-H is designed to supplement and introduce both first and second graders to the Hendricks County 4-H program.

As a Mini 4-H parent, your job is to guide your child through the activities. It is suggested that you do not complete the activities for them. Instead, help them, guide them, work with them, and let them do all that they possibly can. Learning by doing is the best educational tool that we can provide for our youth.

Additionally, the Mini 4-H program is set up to allow your child to exhibit a project at the 4-H Fair. This project is based on information within this manual. The 4-H Fair is an exciting time for 4-H members and families. It is a week that allows community youth to showcase their talents, interests and enthusiasm for learning.

Mini 4-H is fun! Your child will certainly enjoy it. You can have fun too, by guiding and helping as your child participates in the program. Encourage and praise your child as he/she has fun learning and sharing with you.

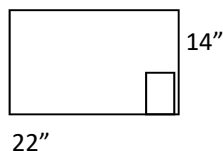
## Rules

1. Mini 4-H is open to any youth who is enrolled in either the first or second grade on January 1st of the current year.
2. Any Mini 4-H participant may enroll in one (1) or two (2) projects. There are 16 projects to choose from. **Participants may exhibit only one (1) activity from a project book at the Hendricks County 4-H Fair (up to 2 projects total).** Additional activities can be done at home, but will not be exhibited.
3. It is encouraged that Mini 4-H participants enroll in the County Mini 4-H club, and their projects are done at home.
4. **ALL POSTER EXHIBITS MUST (NOTE: Not all Mini 4-H exhibits will be on a poster board):**

A. Have a solid, stiff backing, which is 14" high by 22" wide. This can be HEAVY cardboard or foam core board. The board must be able to stand by itself (Foam core board is available in the Extension Office for a minimal cost)

B. Be positioned HORIZONTALLY.

C. Have a total exhibit board no larger than 14" high by 22" wide.



**All youth will need to complete Enrollment via 4Honline and Fair Entry will need to be completed by July 1st of the current school year. Exhibit Tags will be ready the week before Fair. More information will be sent home as the Fair approaches.**

D. Be COMPLETELY COVERED with CLEAR PLASTIC material. (Available in the Extension Office for a minimal cost.)

5. Mini 4-H participants will complete activities in the book. The Record Sheet located in the back of the project book needs to be completed and will be turned in with their exhibit at the Fair.

# Mini 4-Her's Page

Welcome to Mini 4-H! You are now a member of the 4-H family. You are a special person.

Mini 4-Her's have a lot of fun! There are many activities for you to explore. You can try new things. You can share it with your friends and family.

Mom, Dad or another adult can help you with your project. Bring your project to the 4-H Fair and lots of people will be able to see what you have done. You also get a ribbon made just for 4-Her's.

Here a few things to know about 4-H.

The 4-H Symbol: A four-leaf clover with an "H" on each leaf

4-H Colors: Green and White

The 4-H Motto: "To make the best, better"

## 4-H PLEDGE

I pledge my **HEAD** to clearer thinking,

I promise to use my head to make good choices.

my **HEART** to greater loyalty,

I promise to use my heart to be a good friend.

My **HANDS** to larger service,

I promise to use my hands to do helpful things for others.

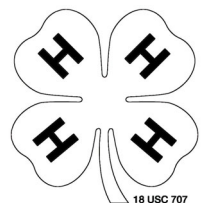
And my **HEALTH** to better living,

I promise to take care of my body and to show others to live in a healthy way.

For my club, my community,

I promise to help my group, my community,

My country, and my world.



# Models Activities

Model building can be fun and exciting. You can be creative, learn to follow directions, and make models you are proud to display.

A model is a small version of a real life thing. Model building can become a hobby that can last your entire life. You may even build models when you have an adult job. Engineers and architects often build models as part of their jobs.

There is no right or wrong model. Models can be made from a store kit, or they can be made out of things found at home. You can use clay, paper, popsicle sticks, toothpicks, sticks, sugar cubes, or other items that can be glued or stuck together.

## **Before you get started:**

- Pick an activity.
- Read the directions carefully.
- Make sure you have all of the needed materials.
  - Ask an adult or teenager to help you.
- Clean up your work area and put your supplies away when you are finished.
  - Complete your Mini 4-H Book pages.
  - ENJOY!

## **Exhibit:**

First Grade: - A product of "My Own Model" **or** a model from a plastic snap together model kit purchased from the store (be sure to keep it appropriate for your age)

- Completed Record Sheet

Second Grade: - Shoebox Room Model" **or** a model from a plastic snap together model kit purchased at a store (be sure to keep it appropriate for your age)

- Completed Record Sheet

# First Grade

## My Own Model

### Needed Materials:

- Glue
- Scissors
- Construction Materials (**Your Choice**) (Paper, sugar cubes, sticks, clay, toothpicks, popsicle sticks etc.)
- Newspaper or Plastic Cover
- Table or Flat Surface

### Directions:

Cover the table with newspaper or plastic and keep the area clean.

Keep your hands clean.

Make a model using 2 to 4 materials of your choice. Model should be **no larger than 12"**.

Clean up your work area and put all of your supplies away.

If planning to exhibit this option at the fair, be sure to add the information to FairEntry once the system opens. This will be used to print your exhibit tag for display at the fair.

# First Grade

## Snap Together Model Kit (basic)

There are many types of models. Do not spend too much money for your kit, and be sure to find a kit that is not too hard for your age or experience. You want to enjoy making your model. Have an adult help you.

### Needed Materials:

- Snap Together Model Kit (Store Bought) **No larger than 12"**
- Table or Flat Surface
- Newspaper or Plastic Cover

### Directions:

Cover the table with newspaper or plastic and keep the area clean.

Keep your hands clean.

Lay all of your pieces out on the table . Look at the instructions and check to see if you have all of the parts.

Read the directions to the end.

Read the directions again, and follow each step. Snap together your model.

Clean up your work area and put all of your supplies away.

If planning to exhibit this option at the fair, be sure to add the information to FairEntry once the system opens. This will be used to print your exhibit tag for display at the fair.

# Second Grade

## Shoebox Room Model

### **Needed Materials:**

- Shoebox
- Pencil
- Markers, Paint or Colored Pencils
- Scissors
- Glue
- Construction Materials (**Your Choice**) (Paper, toothpicks, sticks, cloth, clay, popsicle sticks, cardboard, etc.)

### **Directions:**

Pick a room in your house. Look around the room carefully to see what it contains.

Find a working space to keep all of your project supplies.

Make a model of the room with the materials of your choice. Make it small enough to fit inside a shoebox.

Make furniture, chairs, rugs, etc. (You do not need to make the really small items in the room.)

Clean up your work area and put all of your supplies away.

If planning to exhibit this option at the fair, be sure to add the information to FairEntry once the system opens. This will be used to print your exhibit tag for display at the fair.



# Second Grade

## Snap Together Model Kit

There are many types of models. Do not spend too much money for your kit, and be sure to find a kit that is not too hard for your age or experience. You want to enjoy making your model. Have an adult help you. If you did the Snap Together Model Kit for an exhibit in first grade, pick a different one to do this year. You have now started a simple collection of models!

### **Needed Materials:**

- Model Kit (Store Bought) **No larger than 12"**.
- Model Glue/Model Paint
- Newspaper or Plastic Cover
- Table or Flat Surface

### **Directions:**

Cover the table or work area with newspaper and keep the area clean.

Keep your hands clean.

Read the directions in your kit before beginning to build. Make sure all pieces are there.

Make sure the numbers on your pieces match the directions you are reading.

Do not unsnap pieces that are attached until you are ready to use them. They will get lost!

Wipe any extra glue or paint off before it dries.

Clean up your work area.

If planning to exhibit this option at the fair, be sure to add the information to FairEntry once the system opens. This will be used to print your exhibit tag for display at the fair.

# 4-H Fair Exhibit

Listed below are projects you can exhibit at the 4-H Fair judging. Check the fair book for the date and time it is due. The fair book may also list special exhibit rules. You may only exhibit 1 project from this book.

If you have any questions about your projects, please call your Mini 4-H Leader or the Extension Office.

INCLUDE completed Record Sheet with your exhibit.

## First Grade

- My Own Model
- Snap Together Model Kit

## Second Grade

- Shoebox Room Model
- Snap Together Model Kit

# Mounting Your Pictures

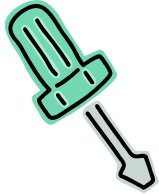
Needed Materials:

- Rubber Cement or Double Sided Tape
- Scissors
- Poster Board
- Clear Plastic

Directions:

- An adult or teenager can help you cut the poster board. Cut a piece of poster board or foam board so it is 14" high by 22" wide or appropriate sized board available at the Extension Office.
- Use rubber cement or small pieces of double sided tape.
- Arrange the items neatly on your board. Be sure to include a title for your poster.
- Poster must be completely covered by a clear plastic material.

**Good Luck at the 4-H Fair!**



# Toolbox Word Search



G	T	S	P	L	I	E	R	S	B
H	Z	W	R	E	N	C	H	Y	D
D	F	S	B	J	M	S	A	T	L
T	I	H	A	N	D	Y	M	A	N
O	X	R	U	L	E	R	M	F	A
O	N	T	H	S	D	N	E	K	I
L	A	R	O	A	V	W	R	M	L
S	C	R	E	W	S	Z	A	X	S

FIX

HAMMER

HANDYMAN

NAILS

PLIERS

RULER

SAW

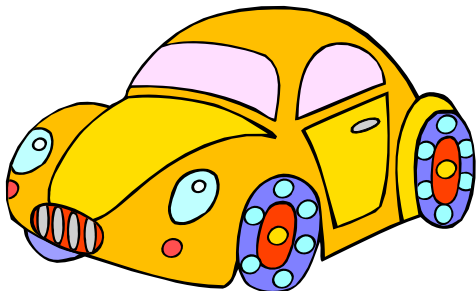
SCREWS

TOOLS

WRENCH







# Mini 4-H Model Record Sheet

I used \_\_\_\_\_  
\_\_\_\_\_ to make my model.

What could you find around the house to  
make a model? \_\_\_\_\_  
\_\_\_\_\_.

I learned \_\_\_\_\_  
\_\_\_\_\_.

Name: \_\_\_\_\_

Date: \_\_\_\_\_