

## Mini 4-H Meeting – February 2022

This packet includes a list of supplies needed to conduct our Mini 4-H Meeting activities at home if you plan on participating virtually this month. Some of the resources listed are available for Mini 4-H members ahead of time if they would like to pick up a “kit” at the Extension Office before the meeting in order to do the activities at home. Items with an \* beside them are available at the Extension Office for pick up if needed. Please call ahead of time if picking up supplies so we can have them ready for you.

*All supplies will be provided if attending in-person at the fairgrounds.*

### **Arts & Crafts – Decoupage**

- White paper\*
- White glue
- Small paint brush
- Colorful paper, tissue paper, pictures from magazines, comics, wrapping paper, etc.\*
- Newspaper (or other covering for table)\*

### **Models – My Own Model**

- Glue
- Scissors
- Construction Materials (examples: paper, sticks, clay, toothpicks, marshmallows, stickers, tape, etc.)\*
- Newspaper (or other covering for table)\*

### **Nature, Plants, & Trees – Seasonal Trees**

- Tree Page (provided by Extension Office)\*
- Brown, Green, Red, Yellow, Pink Construction paper\* OR Crayons/Markers
- Scissors
- Glue

If you have questions, need additional information, our would like to request resources, please contact the Extension Office at 317-745-9260 or email [hendrces@purdue.edu](mailto:hendrces@purdue.edu). Thank you! See you soon!

## **ZOOM MEETING INFORMATION:**

Topic: Mini 4-H Meeting - February

Time: Feb 15, 2022 06:30 PM Eastern Time (US and Canada)

Join Zoom Meeting

<https://purdue-edu.zoom.us/j/98547659005?pwd=bmp0Qk1nd0k3bJJCUGtqUDhQUktydz09>

Meeting ID: 985 4765 9005

Passcode: mini4H

One tap mobile

+16465588656,,98547659005#,,,,\*104971# US (New York)

+13017158592,,98547659005#,,,,\*104971# US (Washington DC)

Dial by your location

+1 646 558 8656 US (New York)

+1 301 715 8592 US (Washington DC)

+1 312 626 6799 US (Chicago)

+1 669 900 6833 US (San Jose)

+1 253 215 8782 US (Tacoma)

+1 346 248 7799 US (Houston)

Meeting ID: 985 4765 9005

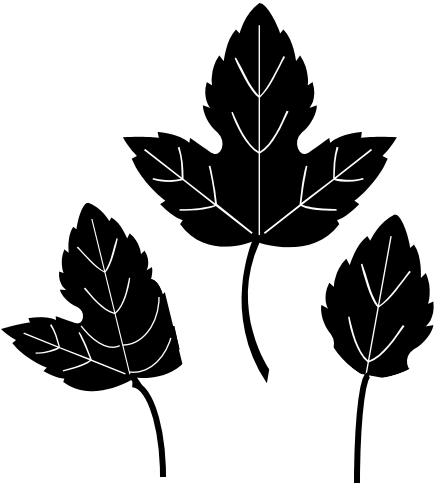
Passcode: 104971

Find your local number: <https://purdue-edu.zoom.us/u/abMZKNCDhE>

# Some Indiana Leaves

## Red Mulberry

Three simple leaves make up this exhibit.



Note: The Red Mulberry has jagged edges and has 3 different shaped leaves. The Sassafras Tree has 3 leaves which look very similar but their edges are smooth.

## Sugar Maple Leaf

These are five-lobed leaves with the clefts between the lobes that are curved rather than sharp angled.



Red Maple leaves—not as deeply cut

Silver Maple leaves—deeply cut leaves and when the wind blows, these leaves take on a silver appearance

Maple leaves are simple leaves.

## Black Oak

There are many oaks, the black oak usually has seven lobes.



Oak leaves are simple leaves.

## White Oak

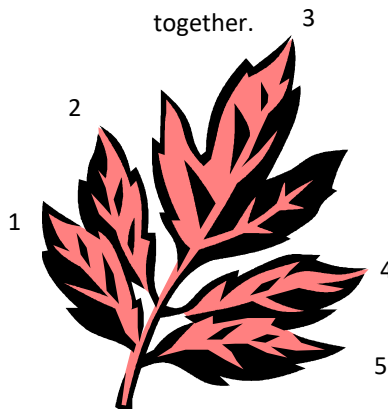
This is a rounded lobed leaf. Other oak leaves have bristle (pointed edges) tipped leaves.



This is a simple leaf and exhibiting one leaf is correct

## Boxelder

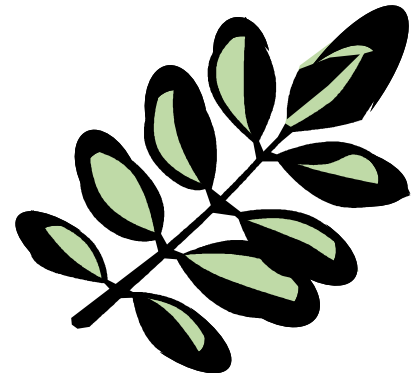
Contains 3 or 5 leaflets. This is compound leaf so all parts (3 or 5) must be displayed together.



To exhibit a compound leaf, all of the parts must be included.

## Black Locust

A compound leaf with 7-17 leaflets. Display all of the leaflets to make a "leaf".

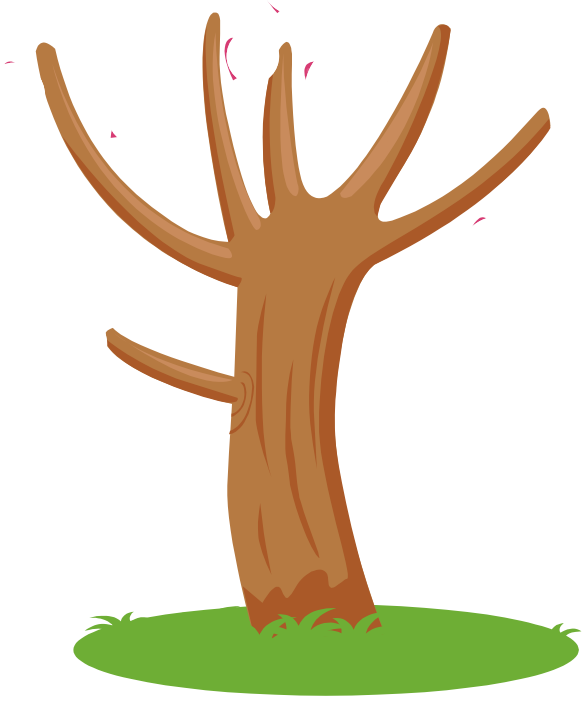


To exhibit a compound leaf, all of the parts must be included.

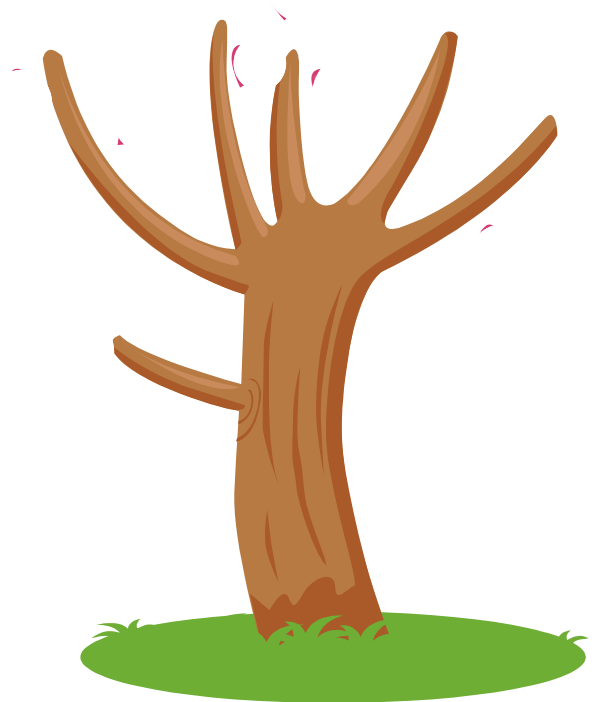
# Indiana Seasonal Trees Handout

- Plants need sun, water, soil, and food to grow
- Explore some trees in your yard or neighborhood with your child.
- Talk about what season it is and have your child describe the colors of the leaves on the trees.
- Look for items on the trees such as flowers, berries or empty branches.
- Look for any animals that make their homes in the trees, such as birds or squirrels.
- Observe the condition of the tree and relate it to the table listed below.

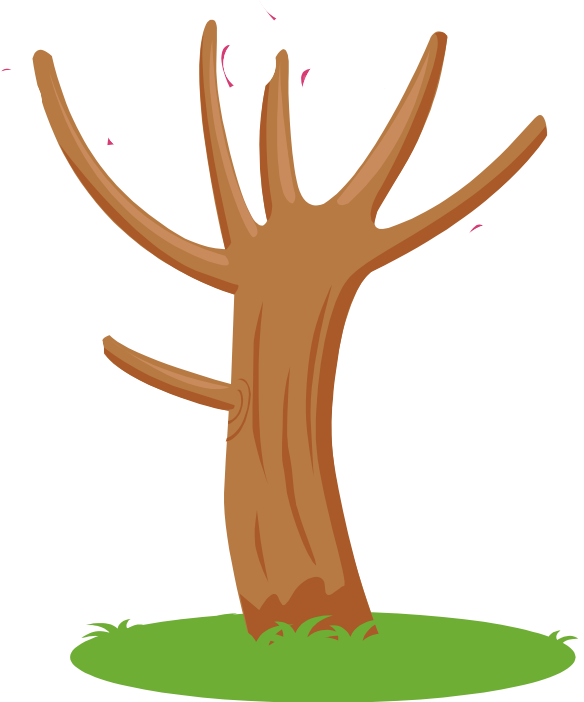
<p style="text-align: center;"><b>Spring</b></p> <ul style="list-style-type: none"><li>• Trees absorb water through their roots and prepare for a hot summer</li><li>• Trees start to bloom and bright, green leaves appear on trees</li><li>• Trees will bud and start to flower</li><li>• Some trees have a nice odor when the buds are present</li></ul>	<p style="text-align: center;"><b>Summer</b></p> <ul style="list-style-type: none"><li>• The flowers or buds on the tree are gone and the leaves are bigger and greener</li><li>• Some trees are fruit trees and the fruit is starting to develop on the trees</li></ul>
<p style="text-align: center;"><b>Fall</b></p> <ul style="list-style-type: none"><li>• The leaves on the trees are starting to get dry and may begin to change color</li><li>• The leaves will eventually dry up and fall off of the branches</li><li>• Some trees have seeds or nuts that will fall to the ground during this time</li></ul>	<p style="text-align: center;"><b>Winter</b></p> <ul style="list-style-type: none"><li>• All trees, except pine trees, should lose their leaves in Indiana</li><li>• The branches remain and the tree is alive, but the leaves and fruit are gone</li><li>• Observe the tree and see if you can find any animal nests that are normally hidden when leaves are present</li></ul>



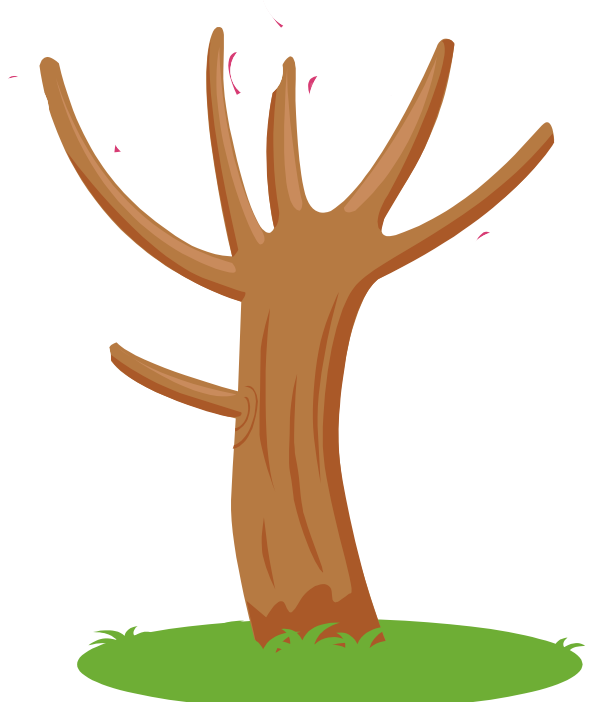
Spring



Summer



Fall



Winter