

# Over the Back Fence

*Agriculture and Natural Resources Extension Newsletter*

## Tis the Summer Season

With the county fair coming to a close, there are so many agricultural aspects of the fair that you might not realize are agriculture. From livestock shows which grow future leaders in the agriculture industry to open class exhibits of crops and home-grown vegetables. Even drinking a lemonade shake up and eating a corn dog is agriculture. Agriculture is everywhere around us all of the time. As county fair season kicks off and state fair in the near future, I encourage everyone to check out other fairs and see how agriculture is on display and the amount of time and work which goes into projects. I hope everyone has a plentiful garden harvest and enjoys some time outdoors in the sunshine!

Aniel Camm-Wilson





*In This Issue:*

**Ag Spotlight**.....2

**Harrison County ANR Events/News**.....3-5

- Extension Master Gardeners
- Drone Class
- Community Garden
- Grow It, Cook It
- ANR Needs Assessment

**Featured Event** .....6

- Harrison County Fair

**Other ANR Information**.....7

- Farmers Market
- Indiana Pesticide CORE Training Manual
- National Cattlemen’s Beef Association Redbooks

**Upcoming Events**.....8-9

**Ag Education and Information**.....10-13

- Ticks
- Pesticide Clean Sweep Days in August
- Controlling Buttercup
- Forestry and Natural Resources



**Ag Spotlight**

This is a section which features an interview of community members involved in Agriculture or Natural Resources fields!

**Name:** Eric Hess  
**Hometown:** Corydon, but more associated with Lanesville for school and community events  
**Education:** Graduated with a degree in Ag Finance and Entrepreneurship from Purdue University in 2008.  
**Occupation:** Farm Credit Mid-America – Senior Financial Officer (loan officer)

**What interested you in Agriculture?**  
I grew up on the family farm where we raised hay, straw, cattle, popcorn, wheat, and soybeans. I actually was not super interested in coming back to the farm until later in my education. Lanesville didn't have an FFA program until my senior year and Gary Geswein came and helped get the program started, so I signed up for an ag class and joined FFA. I learned more about how many options there were in Ag than just what I saw locally and Mr. Geswein's enthusiasm for the industry helped considerably as well. What solidified my interest in agriculture was when I started at Purdue, then later Farm Credit and was surrounded by peers who were excited about returning to the farm or going into some sort of Ag endeavor and learned more of the possibilities in the industry there as well.

**What advice do you have for someone wanting a career in Agriculture?**  
Try to do internships, job shadow, or get yourself some type of exposure in the field you think you might be interested in. Ask lots of questions and be curious and open minded about everything and ready to learn. I would highly encourage them to move away from their home town for a few years for school or work to learn different theories and how different ideas can work well in different places.

**Any other additional information that you would like to be included?**  
Be open minded even about job possibilities in the industry. I never would have pictured myself being in any kind of deskwork like Ag lending until I was able to get a summer internship with Farm Credit and saw how the role really functions and its purpose.





# EXTENSION MASTER GARDENERS

Eighteen dedicated participants successfully completed our Extension Master Gardener (EMG) training course and are now officially certified Extension Master Gardeners! Throughout the program, participants engaged in a variety of educational sessions covering key topics such as pesticide safety, weed identification, invasive species management, fruit tree care, and lawn maintenance.

Certification required consistent class attendance and successful completion of a comprehensive final exam. We are incredibly proud of the hard work and commitment each participant demonstrated throughout the course.

A heartfelt thank you goes out to all of our knowledgeable guest speakers and the EMG volunteers who supported the class every step of the way. Your contributions were essential to making this program a success!





# ANR RECAP

## Drone Class

Adam Shanks, drone specialist from Purdue University joined ANR Educator Ariel Camm Wilson to present “The Sky’s the Limit” drone program at North Harrison High School. He demonstrated the use of drones for vegetation spraying, seeding, scouting, and multiple types of remote sensing. The program was a great way to learn about this facet of precision agriculture!



## Community Garden

Purdue Extension partnered with Corydon Christian Church to start a community garden at the church. A \$1500 grant was received to purchase supplies. Thanks to additional generous donations, 12 raised beds have been built and filled this spring! All 12 beds are currently being cared for by gardeners, with a portion of the produce being donated to Community Services as it is harvested.





## Grow It, Cook It

Eight participants attended the "Grow It Cook It: Strawberries" workshop, where they gained valuable insights into both cultivating and creatively using strawberries.



Ariel led the gardening portion, sharing essential information on proper planting techniques, common pests and diseases, and the differences among various strawberry varieties. Tara guided the consumer portion, offering participants a chance to sample unique savory recipes such as strawberry salsa with homemade whole wheat tortilla chips and strawberry grilled cheese. Attendees also learned how to select quality strawberries at the grocery store, store them properly, prepare them in different ways, and understand their nutritional benefits and appropriate serving sizes. A fun and interactive trivia game helped expand upon their strawberry knowledge.

The timing of the workshop was especially fitting, as National Pick Strawberries Day is celebrated on May 20th—encouraging participants to take what they learned and put it into practice during peak strawberry season. By the end of the session, participants felt empowered and inspired to rethink how they grow and enjoy strawberries all season long!



## ANR Needs Assessment

Purdue Extension Harrison County Agriculture and Natural Resources wants to ensure we are meeting community needs to help educate farmers, producers, and community members. This survey will be used to determine what types of agricultural programs community members would benefit from and what they would most like to learn about.

If you have additional questions, please contact Ariel Camm-Wilson, Harrison County Agriculture and Natural Resources (ANR) Educator at 812-738-4236 or [camm@purdue.edu](mailto:camm@purdue.edu).

Survey Link:  
<https://bit.ly/anrsurvey>





# FEATURED ANR EVENT: HARRISON COUNTY FAIR



## 2025 4-H Fair





# OTHER ANR INFORMATION



Harrison County Farmers' Market is open Saturdays beginning April 26, 2025 to October 25, 2025 from 8:00 am to 12:00 pm and Wednesdays beginning in June 3:00 pm to 6:00 pm. Located at New Hope Wesleyan Church  
1390 Old Hwy 135 NW Corydon

Corydon Farmers Market:  
The Fred Cammack Farmers Market is open on Fridays from May 2nd–October 31st from 4–7 pm.  
Located at  
124 S. Mulberry St. Corydon

## Indiana Pesticide Applicator Core Training Manual

Are you, someone in your family, or your business needing to get licensed as a pesticide applicator? This manual makes a great study guide and contains all of the information to help pass the CORE pesticide applicator exam.

**COST OF THE MANUAL IS \$45.**

### Topics include:

Applicator certification, pest management, handling pesticides, transporting pesticides, pesticides in correlation to the environment, pesticide labels, and calibration and maintenance.

Stop by the Harrison County Extension Office Monday-Friday from 8:00am-4:30pm to grab yours!



## National Cattlemen's Beef Association Redbooks

The Redbook is a pocket-sized record book containing more than 100 pages to record calving activity, herd health, pasture usage, cattle inventory, AI breeding and sales, plus a date book and notes section. The book also includes Beef Quality Assurance national guidelines and proper injection technique information. Available while supplies last.





## Upcoming ANR Events

### Indiana State Fair August 1-17 Closed, Mondays

#### AG 101

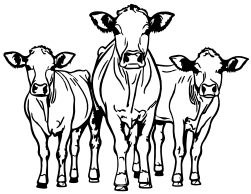
#### Wanting to learn more about agriculture?

Join us for Ag 101, a program where you will learn about different areas of agriculture such as animal science, horticulture, and field crops.

This event is FREE!

Call the Harrison County Public Library Reference Desk at 812-738-4110 to reserve your spot today!

July 30<sup>th</sup> at 1PM at the Palmyra Branch  
July 31<sup>st</sup> at 10AM at the Corydon Branch



#### Field Day

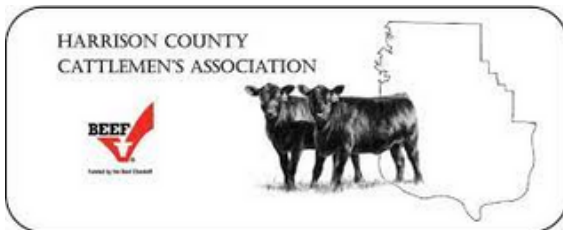
Harrison County Cattlemen's Association Field Day  
Saturday, August 23rd from 10am-2pm

No fee, RSVP not required, but appreciated,  
RSVP by calling the Extension Office at 812-738-4236 or  
email Ariel at [camm@purdue.edu](mailto:camm@purdue.edu)

Location: Siebern's Farm

1959 Witness Tree Road NW, Corydon, IN 47112

Topics: Herd Health, Soil Health, and Common Pasture Weeds



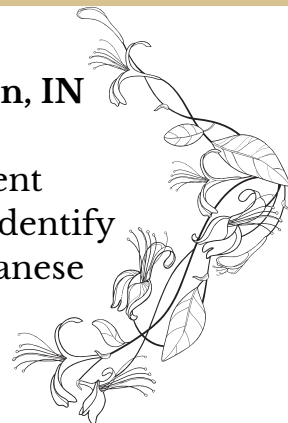
#### Invasive Species Series

July 28<sup>th</sup> at 6PM

at Harrison County Purdue Extension 247 Atwood St. Corydon, IN

Join Kaila Laplace, State of Indiana Cooperative Invasives Management Regional Specialist for the second of the three-part series of how to identify and control invasive species. Some of the species covered will be Japanese honeysuckle and tree of heaven.

RSVP to 812-738-4236





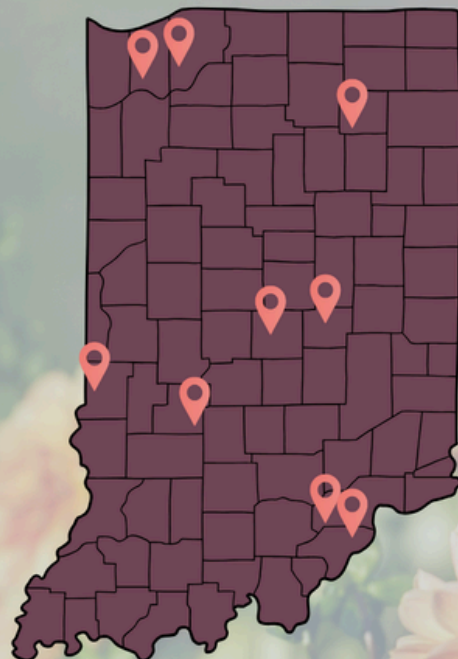
# Cut Flower Farm Tours



## Cut Flower Farm Tours

Thinking about starting your own flower farm? Curious what it really takes to grow and sell beautiful, market-ready blooms? Join us for a tour designed specifically for future flower farmers who want to dig deeper into the world of professional flower growing.

Cost: \$15



- June 10<sup>th</sup> 3p-5p EST - Vigo County: White Violet Center for Eco Justice
- June 17<sup>th</sup> 4p-6p CT - LaPorte County: Line in the Sand Farm
- July 16<sup>th</sup> 10a-12p EST - Marion County: Welch Wholesale Florist
- July 23<sup>rd</sup>, 4p-6p EST - Owen County: Butterfly Hill Flower Farm
- July 25<sup>th</sup>, 10a-12p EST - Whitley County: Millstream Farm
- August 6<sup>th</sup>, 3p-5p EST - Hancock County: Earl Grey Fields
- August 7<sup>th</sup>, 4p-6p CT - Porter County: Hickory Hills Flower Farm
- August 9<sup>th</sup>, 10a-12p EST - Clark County: B & C Farms
- August 12<sup>th</sup>, 4p-6p EST - Scott County: Knobstone Flower Farm

**Pre-registration is required due to limited capacity!**  
**Contact Emily Kresca to register for a tour above**  
**by calling 574-372-2340 or by email at [eluc@purdue.edu](mailto:eluc@purdue.edu).**

If you are in need of accommodations to attend this program, please contact Emily Kresca prior to the meeting at 574-372-2340 or [eluc@purdue.edu](mailto:eluc@purdue.edu).

If you need an interpreter or translator, please contact Emily Kresca prior to the meeting at 574-372-2340 or [eluc@purdue.edu](mailto:eluc@purdue.edu).

Purdue University is an Equal Opportunity/Equal Access University.

This material is based upon work supported by USDA NIFA under Award Number 2023-70027-40444



# AG EDUCATION & INFORMATION

## Ticks

Timothy J. Gibb, Extension Entomologist

Photo Credits: Jim Gathany, Center for Disease Control and Prevention

Several species of ticks are found in Indiana. The most frequently encountered outdoor species is the American dog tick (also known as the eastern wood tick). The lone star tick and, more recently, the deer tick may also be found occasionally in outdoor, wooded areas. Another species, the brown dog tick, may sometimes become a problem indoors, primarily in association with dogs.

American Dog Tick



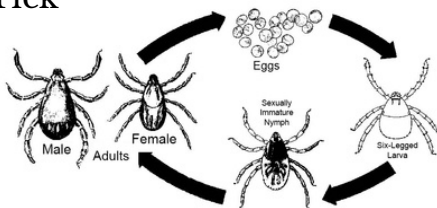
Lone Star Tick



Black Legged Tick



Brown Dog Tick



### Tick Control & Prevention

#### Personal Protection

For preventing outdoor tick exposure, avoid tick-infested areas, and wear protective clothing. Stay on established trails, and avoid brushing against vegetation. Wear light-colored clothing, long pants, and long-sleeved shirts so that ticks can be more easily seen. Tuck in your shirt, and pull your socks over the pant cuffs.

Apply an insect repellent to your shoes, socks, and pants. Effective tick repellents are those containing diethyl toluamide (DEET) or permethrin.

Occasionally check yourself and your children for ticks, especially on the head, groin, and underarm area. Showering after coming indoors may help remove ticks that have not yet attached to the skin. Inspect pets after they have been outdoors, and remove ticks found.

If a tick is found attached on your skin, use the following procedure:

Use blunt forceps or tweezers. Grasp the tick as close to the skin surface as possible and pull upward with a steady, even pressure.

Take care not to squeeze, crush, or puncture the tick.

Do not handle the tick with bare hands because infectious agents may enter via mucous membranes or breaks in the skin.

After removing the tick, disinfect the bite site and wash hands thoroughly with soap and water.

Consult a physician immediately if a rash or flu-like symptoms develop.

<https://extension.entm.purdue.edu/publications/E-71/E-71.html>



# PESTICIDE CLEAN SWEEP DAYS IN AUGUST

Jeff Burbrink, Extension Educator – Ag & Natural Resources, Purdue Extension – LaGrange County

## An unwanted pesticide disposal day is planned for six Indiana locations.

People sometimes end up with pesticides they no longer need or want or that have gone out of condition. Sometimes these products linger for years in the corner of a barn or workshop and become a forgotten potential hazard. The good news is, the Indiana State Chemist Office has arranged for an unwanted pesticide disposal day in six locations in Indiana, the nearest to LaGrange County being from 9 a.m. to 2 p.m. ET on August 20 at Ag Plus, 5501 S. State Road 9, Columbia City.

Before I go much further, I do want to clarify what a pesticide is. Many people think the term “pesticide” refers to products that kill insects. In reality, pesticides include all pests, including insects, weeds, bacteria, fungi, algae, mites, rodents, etc.

The Clean Sweep Pesticide Disposal Program is designed to collect and dispose of suspended, cancelled, banned, unusable, opened, unopened or just unwanted pesticides (herbicides, insecticides, rodenticides, fungicides, miticides, etc.). This disposal service is free of charge up to 250 pounds per participant. Over 250 pounds, there will be a \$3 per pound charge. This is a terrific opportunity for you to legally dispose of unwanted products at little or no cost.

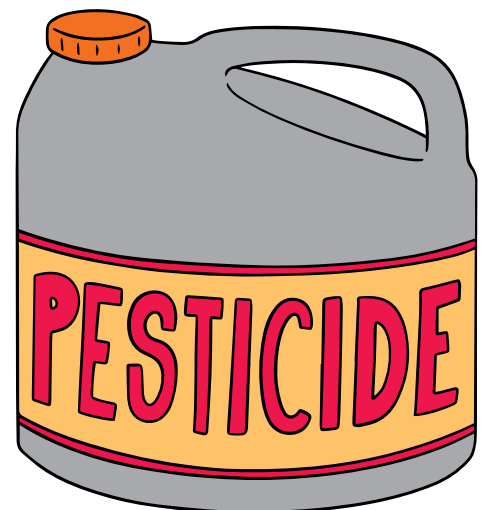
This is not just for farmers: All public and private schools, golf courses, park departments, lawn care companies, pest control companies, nurseries, farmers, ag dealers, and government bodies like cities, towns, counties and state agencies often use large quantities of pesticides.

Clean Sweep is not intended for backyard gardener use. The best way for homeowners to dispose of unwanted products is to either use it as stated on the label, give it to someone who will use it, or contact your local Solid Waste Management District to participate in their household hazardous waste program. In northeast Indiana, call 260-587-3063.

How do you participate? Register at <https://tinyurl.com/2025CleanSweep> by Aug. 8. Questions may be directed to Mitch at (765) 494-7142.

The six sites around Indiana where this program is being held in 2025

- 12 – LaPorte County
- 13 – Vigo County
- 14 – Decatur County
- 19 – Clark County
- 20 – Whitley County
- 21 – Hendricks County



## CONTROLLING BUTTERCUP-A PERSISTENT CHALLENGE

### BUTTERCUP IS TOXIC TO ALL LIVESTOCK SPECIES, ESPECIALLY HORSES

This spring, I've received multiple inquiries about a yellow-flowered plant appearing in pastures and fields—seemingly more problematic than usual. That plant is buttercup (*Ranunculus* sp., not to be confused with Cressleaf Groundsel, *Packera glabella*; syn. *Senecio glabellus*), and while its bright yellow flowers might seem pretty to some, it's definitely unwelcome in pastures and hay fields, especially if you've recently seeded hay fields or are trying to establish new forages.

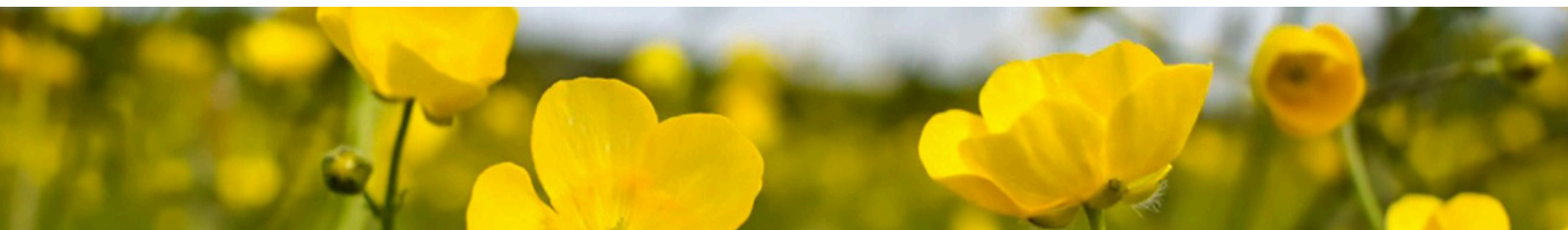
Despite its seemingly sudden appearance, buttercup's growth is due to a buildup of its seed bank, often accumulated over time. This buildup can happen through hay equipment contamination or, more commonly, from bringing in hay containing buttercup seeds and spreading manure from that hay. These seeds can lie dormant for years—typically 3 to 5, but sometimes longer—waiting for the right conditions. This is why buttercup seems to “suddenly” appear, even if it wasn't noticeable in previous years.

Buttercup thrives when soil conditions are favorable, particularly after overgrazing or soil disturbance, which leaves bare spots where the seeds can establish without much competition. This spring's wetter-than-usual conditions have exacerbated the problem, as buttercup flourishes in wet, compacted soils and bare ground—conditions that often follow overgrazing and limited pasture rest. The dry fall didn't help either. If pastures are overgrazed or if livestock have had heavy foot traffic when the ground was soft, you've provided buttercup with the perfect environment to spread.

Competition is key to controlling buttercup. Healthy forage species must remain strong to outcompete it. If desirable plants are overgrazed or there's bare ground, buttercup can take hold. Bare soil acts like a blank canvas for buttercup to grow quickly. The more competition from healthy, well-established forage, the less chance buttercup has to dominate.

Buttercup is toxic to all livestock species, especially horses. While most animals avoid it because they consider it undesirable, overgrazed pastures or a lack of desirable forage can force animals to consume it. If eaten, buttercup can cause mouth blisters, diarrhea, colic, or even death in severe cases. continue reading continued at

<https://www.morningagclips.com/controlling-buttercup-a-persistent-challenge/>





Resources for aquaculture, fish management, urban forestry, forest management, natural resources planning, wildlife and sustainable biomaterials.



**FNR Extension YouTube Channel**  
Check out our 600+ videos & subscribe to be notified when more are added.



**Publications - [edustore.purdue.edu](http://edustore.purdue.edu)**  
View our 400+ FNR Ext. publications.

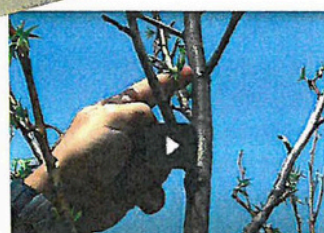
## Forest & Tree Videos



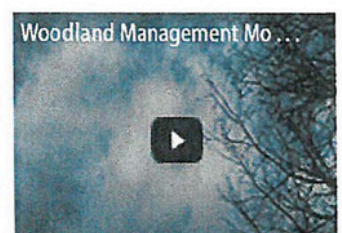
**Woodland Stewardship For Landowners: Foliar Herbicide Application**



**ID That Tree: Black Walnut**



**Tree Pruning Essentials**

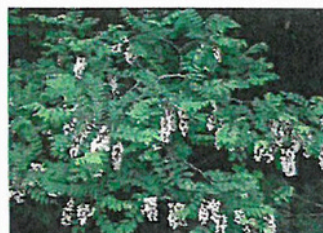


**A Woodland Management Moment - Forest Openings**

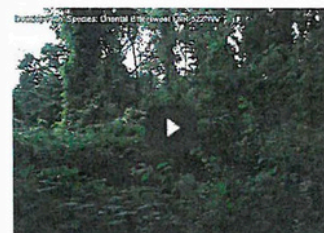
## Invasive Species



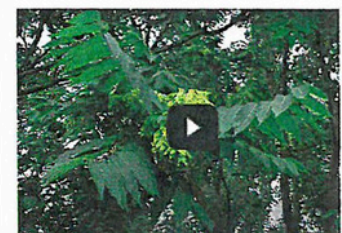
**Ask an Expert: Invasive Plant Species**



**Invasive Plant Species in Hardwood Tree Plantations,**  
[edustore.purdue.edu](http://edustore.purdue.edu)



**Invasive Plant Species: Oriental Bittersweet**

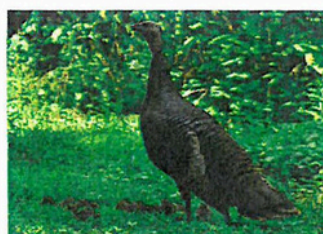


**ID That Tree: Invasive Tree of Heaven**

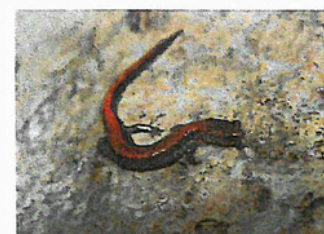
## Wildlife



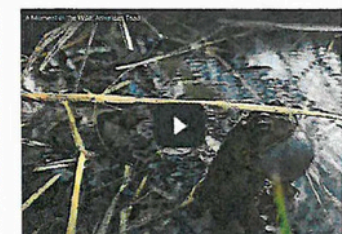
**Woodland Stewardship For Landowners: Managing Deer Damage to Young Trees**



**Creating a Wildlife Habitat Mgmt. Plan for Landowners**  
[edustore.purdue.edu](http://edustore.purdue.edu)



**Forest Management for Reptiles & Amphibians,**  
[edustore.purdue.edu](http://edustore.purdue.edu)



**A Moment in the Wild: American Toad**

Purdue University prohibits discrimination against any member of the University community on the basis of race, religion, color, sex, age, national origin or ancestry, genetic information, marital status, parental status, sexual orientation, gender identity and expression, disability, or status as a veteran. Purdue University is an Equal Opportunity/Equal Access University.

Purdue Extension  
Harrison County  
247 Atwood Street  
Corydon, IN 47112

NONPROFIT ORG  
U.S. POSTAGE  
PAID  
CORYDON, IN  
PERMIT NO. 31

ANR Newsletter



Extension - Harrison County

# Over the Back Fence

*Agriculture and Natural Resources Extension Newsletter*

**Ariel Camm-Wilson**

- County Extension Director (CED)
- Extension Educator
- Agriculture and Natural Resources

**Tara Beckman**

- Extension Educator
- Health and Human Sciences & Community Development

**Anna Denny**

- Extension Educator
- 4-H & Youth Development

**Katie Davidson**

- Community Wellness Coordinator (CWC)
- Floyd, Clark, and Harrison Counties

**Cindy Finerfrock**

- Nutrition Education Program Advisor (NEPA)
- Floyd, Clark, and Harrison Counties

**Mary Eve**

- Office Manager

**Sallie Carter**

- Extension Program Assistant

**Tammy Alcorn**

- Administrative Assistant

**Sarah Gilmer**

- Admin Program Assistant

**Gracelyn Burks**

- Summer Intern

**Connect with Us!**



[extension.purdue.edu/Harrison](http://extension.purdue.edu/Harrison)



[facebook.com/HarrisonCoExtension](https://facebook.com/HarrisonCoExtension)



[bit.ly/harrisoncoyoutube](https://bit.ly/harrisoncoyoutube)

Phone: 812 738-4236

Fax: 812 738-2259

Address: 247 Atwood St. Corydon, IN

Purdue University prohibits discrimination against any member of the University community on the basis of race, religion, color, sex, age, national origin or ancestry, genetic information, marital status, parental status, sexual orientation, gender identity and expression, disability, or status as a veteran. If you are in need of accommodations, an interpreter, or translator to participate in any extension-based program or resource, please contact our office 1 week prior to the event date at 812-738-4236.