

# Fulton County 4-H Newsletter



## 2024 Fair Dates

Fulton County 4-H Fair – July 7-13, 2024

Indiana State Fair – To Be Announced...



---

### 4-H ENROLLMENT – IS NOW OPEN!!!

We encourage everyone to sign up between October 1<sup>st</sup> and January 15<sup>th</sup> to get the most out of your 4-H year.

Enroll online at <https://v2.4honline.com> using a phone, tablet, or computer. Enrollment instructions are enclosed. Please use the same email address used to enroll in previous years. Call the office if you need help enrolling, remembering the email address attached to your account, or need a password reset. **Please don't make a new account if you already have one!** For new enrollments click on Don't have an account at the bottom.

*IF YOU NEED ENROLLMENT STEP-BY-STEP INSTRUCTIONS FOR 4-H ONLINE, REACH OUT TO [CRGROSSM@PURDUE.EDU](mailto:CRGROSSM@PURDUE.EDU) or 574-223-3397 AND CRYSTAL WILL EMAIL THEM.*

- Enrollment is not completed until the \$15.00 state program fee is paid.
- Family discounts are available for families with more than 3 youth in the regular 4-H program. Please contact the office to receive this discount.
- Mini 4-H members are required to enroll on 4-H Online but do not have a program fee.

#### State Program Fees

**\$15** per 4-H member

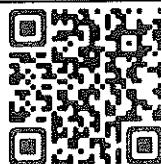
Due within **7** days of enrollment

Make Payments:

- Online with credit/debit card
- Cash or check in the Fulton County Extension Office
- Check mailed to 1009 W 3<sup>rd</sup> St, Rochester
- Checks payable to *CES-Fulton County*

Projects can be added or dropped till May 15, 2024, on 4-H Online.

4-H Online QR Code



## MINI 4-H

- Mini 4-H is open to all children in kindergarten through 2<sup>nd</sup> grade. It's a fun way to learn about regular 4-H with NO COST to join.
- Attending 4-H meetings is not required but each club would welcome, and be glad to have minis attend.
- Signing up for Mini 4-H in 4-H online *is required* and allows us to send information out about camp, and more activities, throughout the year. In June, the Jr. Leaders host a Mini 4-H Day Camp.

## WE APPRECIATE OUR VOLUNTEERS!

- Volunteer forms must be completed to help at any 4-H event, project, or club this coming year. Volunteer forms **must be filled out** by current and new volunteers **each year before you can interact with the youth or host events**.
- *Returning volunteers* can keep it simple by completing the volunteer form online at <https://v2.4honline.com>, watching the 3 videos, and completing the 2 quizzes.
- *New volunteers* must come into the office to complete the required forms or ask us to mail paper copies and provide 3 references (name, phone, email, and mailing address).
- Please consider getting your forms filled out early, so you will receive our office communications. Any questions, please get in touch with Crystal, 4-H Educator, at [crgrossm@purdue.edu](mailto:crgrossm@purdue.edu) or by phone at 574-223-3397

## PROJECT SUMMARY GUIDE

The Project Summary Guide is currently being updated for 2024. We are waiting on the final livestock changes and state project changes. The updated summary guide will be added to our Facebook page [Purdue Extension-Fulton County 4-H Clubs](#) and our website <https://extension.purdue.edu/county/fulton/4h-enrollment1.html> under project lists and summary guide at the bottom.

## 4-H Clover Patches

If you are interested in a 4-H Clover patch for your varsity jacket (looks like the picture below), we have them available for purchase in the extension office.

They are \$10.00 a piece.



## Seniors/10 Year Members



- We will be sending out a request in late January to early February for a senior photo and a small questionnaire about your future plans after high school and your favorite 4-H activities/memories. This information is for us to celebrate you by posting in the local newspaper, posting on our Extension 4-H webpage, and hanging up your photo in the community building.
- Also, each senior 4-H member will have an area in the community building during fair week to display pictures, ribbons, trophies, and other awards from their 4-H career.

## SCHOLARSHIPS

Any juniors, seniors, and Class of 2023 postgrads should watch the Facebook page in late fall for information on 4-H Scholarships available.

---


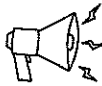
## JR. LEADERS

Jr. Leaders is open to all 6-12 graders enrolled in the Fulton County 4-H program. Junior Leaders is a year-round project and is an excellent way to get involved in the community, improve leadership and teamwork skills, and of course, have fun!

To learn more about Junior Leaders, go to:

<https://extension.purdue.edu/4-H/projects/4-h-project-junior-leaders.html>

- 6<sup>th</sup> graders will enroll in the Jr. Leaders Civic project (for 6<sup>th</sup> graders only).
- 7<sup>th</sup>-12<sup>th</sup> will enroll in the regular Jr. Leader project.
- Meetings are held in the Community Building on Sunday afternoons once a month, trying to avoid sports or other school activities. Information and reminders are sent through email, postcards, or the Remind app. More information will be provided at our meetings.
- Some of the activities we usually do include; Mini 4-H Halloween Party, Christmas shopping for families picked from the Miracle Tree, a Food Booth at the Rochester FFA Auction in March (this is normally our only fundraiser), an Easter Egg Hunt for the community youth, and other community service projects as they come up.
- Mini 4-H Halloween Party hosted by Jr. Leaders will be on October 22<sup>nd</sup> from 2:30-4:00p

 **Junior Leaders Call Out**   
Calling all 6<sup>th</sup> -12<sup>th</sup> graders

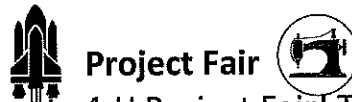
**When:** November 5<sup>th</sup>, 2023

**Where:** Community Building on the Fulton County Fairgrounds

**Time:** 3:00 pm to 5:00 pm

There will be current Junior Leaders ready to share their project and answer any questions you may have.

If you cannot make it and are interested in joining or have questions, please contact Jeannie Rock at 574-223-3397 or [rock3@purdue.edu](mailto:rock3@purdue.edu).



**Project Fair**

Come and join us at the Fulton County 4-H Project Fair! This is an excellent opportunity to discover new projects and learn more about the 4-H program. The project fair will be held at the same time as the Junior Leader Call Out on November 5th from 3:00 pm to 5:00 pm at the Community Building on the Fulton County Fairgrounds. We encourage everyone to attend and see what 4-H has to offer. See you there!  
Share, share, share!! Let's get more enrollments!

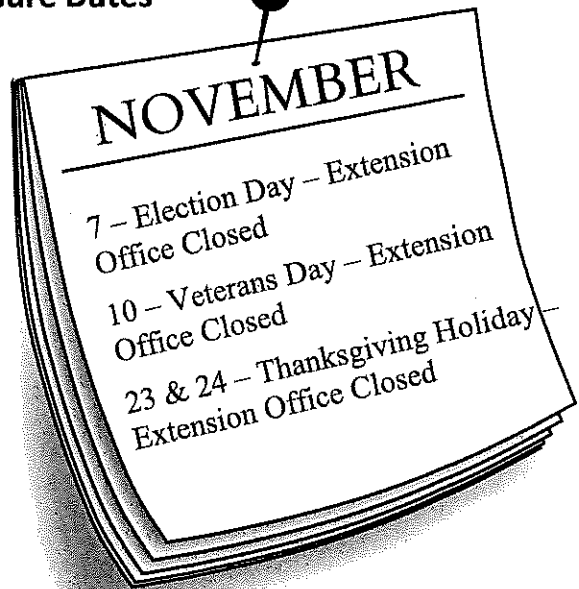
**Purdue University's Broadband Initiative**

Calling all 4-H'ers and their families in #Indiana! How is your internet access when you are at home? Can you stream your favorite show? Can you play your favorite online game without any disruptions to your connectivity? Join the Purdue Broadband Team and become a broadband influencer by reporting if you get broadband or not at your address and submitting Internet speed checks.

4-H'ers can join the broadband event on 4-H Online to submit their findings. They will also be entered to receive a Broadband influencer pin and can enter for a chance to win an iPad. We have instructions at the Extension office on how to do this that can be emailed out if requested.

See the following inserts for more information on what broadband is and how to participate.

Important Office Closure Dates



**Halloween WORD SEARCH**

K D M L P B J H H J N S R E O N B C S N Q Z  
 K N P U L A L E A J V P Q F J D A A B M C O  
 D R A C U L A A N L H G S Y E X C N Q X L Q  
 Y A B Q B G P P C W L P K T B U L D A P K Z  
 O C T O B E R Q N K Y O N K C E G Y W F U L  
 M R M A G F O W C O E U W M U F J M A S K Y  
 Y W Y O Z Y X A S K A Y S E M R O Z A H E R  
 B P E C B K L V D H N I Y B E A G I W B U S  
 F F U A O B J B S I B K T D Z N T C K U W P  
 M T Z M R X Z B L G O W J L R K P R A N K V  
 N N O X P R K B V O N C S C X E S E E L B H  
 Y I R R B K O D P G L M E R I N Z E K A A C  
 W G A C O G I S C A R Y L B Y S I P T V T A  
 P H N S P X Y N K G M U M M Y T S Y Y S S U  
 H T G P P E P M V H B O N E S E C G N I N L  
 B C E Q T I C N W O Z P N E W I S P E W H D  
 Q Z Z F J R D A Q S A S M O N N K Q Y L R R  
 Y R C H E B I E S T T V S C A R E C R O W O  
 B O D O D W V C R D H N H Z U T L R S R H N  
 R X S R G B P M K F O R A D N A E M H H D O  
 O E F R H Q G M G O S C M O N S T E R N N Y  
 O X Y O C P L F M L W C A P L Z O F O A Q E  
 M J G R Y W S Y C H A Y R I D E N Q H P O O

- HALLOWEEN
- CANDY
- BROOM
- NIGHT
- PUMPKIN
- SKELETON
- SPIDER
- SPOOKY
- CAULDRON
- ORANGE
- GOBLIN
- BATS
- GHOST
- HAYRIDE
- CREEPY
- BLACK
- BONES
- TRICK
- MONSTER
- TREAT
- MUMMY
- OCTOBER
- HAUNTED
- SCARY
- ZOMBIE
- FRANKENSTEIN
- SCARECROW
- MASK
- DRACULA
- PRANK
- HORROR
- BLACK

# INDIANA 4-H NEEDS YOU TO BE A



**BROADBAND  
INFLUENCER**

## What is an Indiana 4-H Broadband Influencer?

**1**

Checks your internet speed

[pcrd.purdue.edu/speedtest](http://pcrd.purdue.edu/speedtest)



**2**

Validates it on the FCC website

[broadbandmap.fcc.gov](http://broadbandmap.fcc.gov)

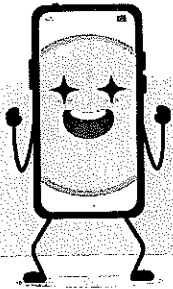
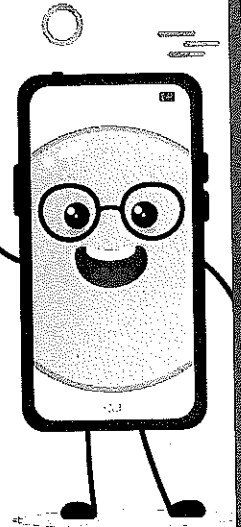


**3**

Share what they've done with others

**4**

Reports work in the Broadband Influencers event in 4-H Online



Once you have completed all 4, you will receive your Broadband Influencer Pin and be eligible to win an iPad\*!

## Why should I be an Indiana 4-H Broadband Influencer?

## I have more questions!

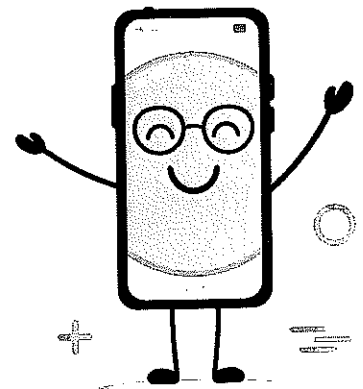
There are a lot of different ways to connect to the internet. Some of them are *very* fast, and some of them are *very* slow. We would like everyone in the state of Indiana to be able to use the internet at fast speeds. While it might help you play games and watch videos more easily, it also can help people who are looking for jobs or trying to communicate, do business, or do schoolwork.

The FCC, or Federal Communication Commission, can't help everyone get fast internet unless they know all the places the internet is installed and how fast it is in each location.



For more information contact your county extension 4-H educator OR email:

[state4hleader@purdue.edu](mailto:state4hleader@purdue.edu)



**PURDUE  
UNIVERSITY**

Extension - 4-H Youth  
Development



\*Indiana 4-H Broadband Influencers will be asked to write a short essay about their experience.  
The Broadband Influencer Program is a Purdue Broadband Team initiative.

# WHAT IS BROADBAND?

**Broadband** is defined by the Federal Communications Commission (FCC), a government entity that regulates telecommunications, as an internet connection that is always on and faster than dial-up.

## DO I HAVE BROADBAND?

While the definition is a bit vague, it really means that if internet service available at your address (home business, organization, etc.) is slower than 25 megabits per second or Mbps download and 3 Mbps upload (Mbps refers to the amount of data that can be handled by your internet connection), 25/3 for short, then you are considered unserved. If you do have 25/3 Mbps service but not 100/20 Mbps available, then you are considered underserved. If either of these is the case, your address could be eligible for funds to provide service of at least 100/20 Mbps. In case you were wondering, "gig" service refers to speeds of 1,000 Mbps.

The FCC unveiled a new map and needs your help to make sure your address and internet service offered are accurate. Read more on how to review your address by reading this blog post: [3 Steps to Bring Better Broadband to Indiana - Purdue Center for Regional Development](#)



## WHAT TYPES OF BROADBAND TECHNOLOGIES ARE THERE?

Broadband technologies vary resulting in different internet speeds and reliability measured in Mbps per technology, but the most common ones include:

### DIGITAL SUBSCRIBER LINE (DSL)

This one uses your copper phone line to provide an internet connection.

### CABLE

This one is usually offered by cable companies and rely on a combination of fiber-optic and coaxial cable.

### SATELLITE

This technology also requires an antenna at your address and line of sight with the satellite providing the internet connection. However, please note that this technology is not considered broadband by the upcoming federal funds. In other words, if your address has access to satellite service, you can still be considered unserved or underserved.

### FIXED WIRELESS

This technology requires an antenna and line of sight between your address and the tower providing the service.

### FIBER-OPTIC

This technology relies on very thin glass fibers, usually as thick as a human hair, to provide internet service.

### FIXED VS. MOBILE BROADBAND

Upcoming broadband funds can only be used for what is called fixed broadband. This refers to the fact that the end-user (a home, business, etc.) is fixed or does not move. Mobile broadband refers to cellular data plans. All technologies described here are considered fixed broadband.

Cellular data provides internet service in a different way. These technologies include 3G, 4G, and/or 5G (do not confuse with 1 G(ig) service, see above). However, these are not considered fixed broadband and if available at your address, you are still eligible for broadband funds.

One last thing, your Wi-Fi relies on these broadband technologies. Consider your broadband connection to be your main water line while Wi-Fi is the shower.

# WHAT IS BROADBAND?

## WHY IS BROADBAND ACCESS DATA IMPORTANT?

The federal government, in partnership with states, is deploying broadband funds through the Broadband Equity, Adoption, and Deployment program also known as BEAD. Indiana is receiving close to \$870 million. A map compiled by the FCC will dictate where these funds go. So, we need to make sure Indiana's map is as accurate as possible. Continue reading below for more information.

## CONFLICTING BROADBAND INFORMATION

Part of the reason this map is being updated is because broadband data is very muddy. In the past, the FCC compiled data from providers that report where they offer service, with what technology, and their maximum advertised download and upload speeds. However, because this data is provider self-reported and not validated by consumers it can overestimate broadband availability. This time around, they are asking for your help to make sure the data reported by providers is accurate at the address level.

## SPEED TESTS

Another wrinkle to consider is that beyond internet service being available, is the issue of reliability and quality of service. One way to measure this is through speed tests. A speed test calculates your download and upload speeds (again, measured in Mbps). If your internet connection consistently delivers speed tests below what the provider says it is providing, there may be some quality issues. This in turn may make your address eligible for funds to build more high-quality internet service. You can see what service you subscribed to by checking out your internet bill.

To conduct a speed test on your existing service or to report an address with no service, please visit: [pcrd.purdue.edu/speedtest](http://pcrd.purdue.edu/speedtest)

And remember, speed tests are free so please complete as many as possible, as frequently as possible! The more data there is on your internet service, the better!

## ADOPTION AND AFFORDABILITY

In addition to having access to adequate internet, another issue is adoption. Many times, internet is available, but folks do not subscribe because they may not be able to afford it. Fortunately, there is a program in place called the Affordable Connectivity Program (ACP) that provides \$30 per month to eligible homes (\$75 in qualifying tribal lands and high-cost areas). Please visit [www.fcc.gov/acf](http://www.fcc.gov/acf) for more information and for instructions on how to enroll.



The Office of Engagement fosters reciprocal relationships with external partners to address societal challenges by leveraging University resources in teaching, research, and engagement. These resources include colleges and academic units, service learning, [Purdue Extension](#), and the [Purdue Center for Regional Development](#), to name a few.