

2023

Fountain County



Mini Handbook

# MINI 4-H GENERAL INFORMATION

- Mini 4-H is for children in Kindergarten, First and Second Grade. 4-H grade is determined by the student's school grade as of January 1 of the current year. 4-H Grade is determined by the school year, and the divisions for projects will be indicated by Kindergarten, First or Second Grade.
- Adults may assist Mini 4-Hers with comprehension project skills. As always, please remember that the completed project should be the child's work. Some projects may require you to assist your child for safety reasons.
- Mini members and their families are responsible for taking their exhibits to the fair and picking them up at the end of the fair.
- The following supplies may be purchased at the Extension Office:
  - Woodworking Kits Grades 1 & 2
  - 16" x 20" Poster Boards (black or white) and Poster Sleeves

## Mini Completion Requirements

Kindergarten - Members may select up to 1 project to exhibit at the Fountain County 4-H Fair. But they **may not** participate in the Mini Livestock Showman project.

First Grade - Members may select up to 2 projects to exhibit at the Fountain County 4-H Fair.

Second Grade - Members may select up to 3 projects to exhibit at the Fountain County 4-H Fair.

**TO PARTICIPATE IN THE MINI LIVESTOCK SHOWMAN PROJECT, YOU MUST COMPLETE A BUILDING PROJECT TOO.**

## Mini Poster Requirements

The size of mini posters is specified with each exhibit. Follow directions according to each project. The child's name and grade should be placed in the lower right corner of each poster.

## Mini 4-H Special Activities

Mini 4-H Day Camp - TBA

Mini 4-H club meetings:

February 20th @ 6 pm at the Fairgrounds

March 27th @ 6 pm at the Fairgrounds

April 15th @ 10 am at Patton's Farm

May 15th @ 6 pm at the Fairgrounds **(all Livestock Mentor Enrollment forms due)**

June 26th @ 6 pm at the Fairgrounds (family cookout)

**Mini 4- H Club Leaders - Laura Bush (765)585-5494 or (765)793-6240**

**Lilly Patton (765)918-8146**

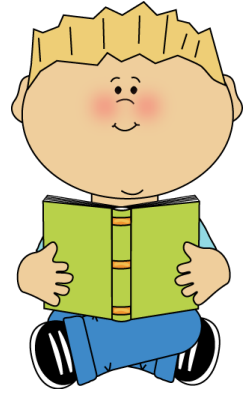
**Ashann Paxton (765)376-9853**

**Rita Jones (765)366-6899**

# ALL ABOUT ME

## EXHIBIT– ALL DIVISIONS

Decorated notebook. This is created the first year you exhibit in the project and used every year with activities completed each year. Style of notebook will be the decision of the Mini 4-Her.



## ACTIVITIES (choose at least one new activity per year)

- 1) All About Me from project booklet.
- 2) Family Tree from project booklet.
- 3) Photo album page(s) with identified pictures of yourself and other family members. Put the name of the person and the date taken with picture.
- 4) A story about a relative's childhood.
- 5) Ask a relative about a favorite pet. Write a short story.
- 6) Ask a relative where they lived growing up. Write a short story.

## MINI COLLECTIONS

**EXHIBIT:** Choose one of the following

- 1.) Five items from your collection with a copy of "My Record" (available at the Extension Office) with the "My Collection" information filled out. If the same collection is used more than one year in the project additional items must be added to the collection. You will add the new items to an additional "My Record" sheet. **\*PLEASE NOTE-** Your collection is not left at the fair for exhibit, if it is a very valuable collection. Please take of photo of your collection at home and bring it to the judging along with your 5 items and "My Collection Record". After the judging, you will leave your photo for display during the county fair.
- 2.) A short report of your visit to museum in a folder of your choose. Please include your name and grade on a label in the lower right hand corner.

### **Report Requirements:**

Name and location of museum

Date of visit

**The report must answer:** Why do they collect stuff? Where do they get things to collect? What is the best thing they collect, or what it is the most unusual thing they collect?

# MINI COOKIE DECORATING

**EXHIBIT** one of the following:

- 1.) Poster or notebook showing basic cookie decorating skills.
- 2.) Poster or notebook showing different cookies you have decorated with a description of each of them.
- 3.) Three (3) decorated cookies on a covered, disposable 9” plate based on your division:
  - Kindergarten:** Cookies with frosting and sprinkles
  - Grade 1:** Cookies with frosting and sprinkles and/or candy on top of each one.
  - Grade 2:** Cookies with frosting, smooth on top and have a border made of either frosting and/or candy.

## MINI CRAFTS

**ALL DIVISIONS:** A Minimum of one craft may be exhibited from one of following categories.

**MINI MODELS:** A model constructed by the member according to his/her abilities. Examples: Lego snap together model or model made from kit.



**MINI PAINTING:** A paint by number picture. It must be framed and ready to display. OR A framed, ready to display freehand painting using one of the following mediums: oil, water color, ink, charcoal, or finger-paint.

**MINI SKETCHING:** A framed, ready - to - hang sketch. Sketches may be colored using one of the following mediums: charcoal, colored pencils, crayon, ink or chalk.

**MINI OTHER CRAFT:** Any craft that is not covered in the above categories. Kits may be used.

## MINI DINOSAURS

**DIVISION**– Kindergarten & 1<sup>st</sup> GRADE

**EXHIBIT**- Choose one of the following.

- 1.) Build a shoe box dinorama that contains a dinosaur(s) and replica of what the earth looked like when dinosaurs lived. See the manual for suggestions.

OR

- 2.) Build a model of your favorite dinosaur using model materials of your choice, such as clay, paper, purchased kit, etc.



(Continued on next page)

## Mini Dinosaurs Continued ...

**DIVISION** – 2<sup>nd</sup> GRADE

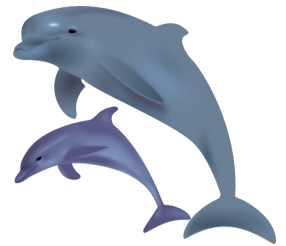
**EXHIBIT:** Choose one of the following.

- 1.) A notebook you made with at least four pictures of dinosaurs telling the name of each dinosaur, how much they weighed, the size and type of dinosaur. Pictures may be drawn, traced, printed from the internet, or cut from a magazine or book.

OR

- 2.) A notebook of plants that dinosaurs would be able to eat today. Identify the plants, tell where they would get them (not the grocery store), and tell why the dinosaur would eat it.

## MINI DOLPHINS AND WHALES



**DIVISION**– Kindergarten & 1<sup>st</sup> GRADE

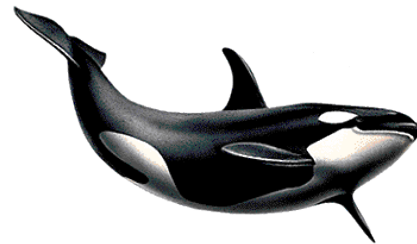
**EXHIBIT:** Choose one of the following.

- 1.) Make a model of a whale. Use a kit, clay, paper, or material of choice. The model should be horizontal and should be no bigger than 12 inches.

OR

- 2.) Find four pictures of whales. You will color them and cut them out. Put the pictures on a poster with the name of each whale, its size, weight, and type.

**DIVISION**- 2<sup>nd</sup> GRADE



**EXHIBIT:** Choose one of the following.

- 1.) A 16” x 20” poster displayed **HORIZONTALLY** identifying the parts of the whale. Pick one of the whales in your manual, copy it, cut it out and put it on the poster identifying the five (5) parts of a whale: blowhole, dorsal fin, flippers, fluke, and eyes. Display the poster horizontally. Look at *Activity 3* in the manual for help.

OR

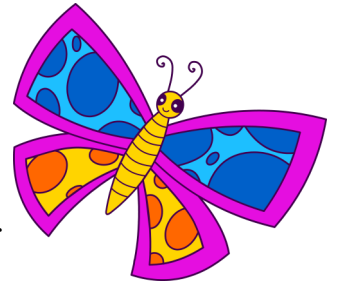
- 2.) A mobile made of three whales or three dolphins. You may copy pages from your manual, color the whales or dolphins, construct and make a mobile, or make (3) whales or dolphins of a material of your choice and construct a mobile.



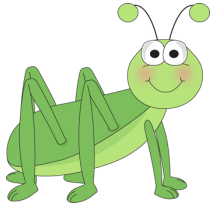
# MINI ENTOMOLOGY

**DIVISION-** Kindergarten & 1<sup>st</sup> GRADE

**EXHIBIT-** The butterfly picture from the manual colored like a Monarch, Viceroy, Red Admiral, Cabbage, Wood Nymph, or Orange Sulphur butterfly. Identify the parts of the butterfly and mount the picture on a 16" x 20" poster displayed HORIZONTALLY.



**DIVISION – 2<sup>nd</sup> GRADE**



**EXHIBIT-** The grasshopper picture from the manual mounted on an 16" x 20" poster displayed HORIZONTALLY. Label the grasshopper parts and color the grasshopper. Fill in the information below the grasshopper.

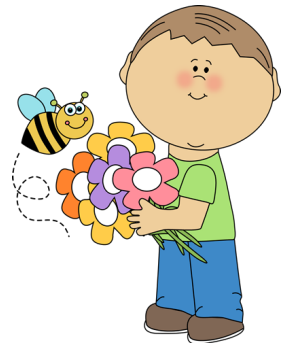
# MINI FLOWERS

**DIVISION–** All Divisions

**EXHIBIT:** Choose one of the following.

- 1.) A container with two different house plants for which you have cared for.
- 2.) Two different flower blooms from flowers you have grown from seed.
- 3.) Display Three cut flowers in a vase. The flowers can be the same kind or different kinds. Attach a small label that tells the kind of flower.
- 4.) A flowering plant in a pot. Attach a small label that tells the kind of flowering plant.
- 5.) A house plant. Attach a small label that tells the kind of plant.
- 6.) A poster that shows the different parts of a plant or flower.

It is recommended that valuable vases/ containers NOT be brought to the fair for exhibit. It is suggested that plastic or disposable containers be used for displaying cut flowers in Mini 4-H.



# MINI FOODS

**DIVISION –** Kindergarten & 1<sup>st</sup> Grade

**EXHIBIT– one of the following**

- 1) A peanut butter sandwich cut into two or four pieces. Use two slices of bread, peanut butter, and your choice of an added ingredient.
- 2) Popcorn snack displayed in a small plastic sandwich bag. Start with popped corn and add other ingredients to make it your own.
- 3) Display a poster you make that shows at least three kitchen safety rules. Be sure to follow the poster requirements listed in the Mini 4-H Handbook.

(continued on next page)

## Mini Foods Continued ...

**DIVISION-** 2<sup>nd</sup> GRADE

**EXHIBIT– one of the following**

- 1.) A packed sack lunch with a menu attached to the outside of the sack. Don't use a lunch box or thermos. (A paper cup may represent the thermos). Using MyPlate (below) make sure your lunch has food from each food group. Your lunch will go home with you after it is judged.
- 2.) Six no- bake cookies and a copy of the recipe. You may use any recipe of your choosing. Bring the cookies to the fair on a paper plate or in a plastic bag.
- 3.) Six marshmallow treat squares and a copy of the recipe. You may use any recipe of your choosing. Bring cookies to the fair on a paper plate or in a plastic bag.

## MINI GARDENING

**DIVISIONS:** ALL

**EXHIBIT:** Choose one of the following.

- 1.) A garden plant in a pot no larger than 10" in diameter that you cared for at least 2 months.
- 2.) A plate of vegetables. For large vegetables such as pumpkin, squash, eggplant, broccoli, cauliflower exhibit one item. For medium sized vegetables such as tomatoes, green peppers, banana peppers, carrots, cucumbers, onions exhibit five (2-5). For small vegetables such as green beans, snap peas, lima beans, exhibit twenty (10-20). When more than one vegetable is needed to make the exhibit, each vegetable should be as much like the other vegetables in size and shape as possible.



## MINI HOME FURNISHINGS

**DIVISION:** Kindergarten & 1<sup>st</sup> GRADE

**EXHIBIT:** The bedroom nameplate designed by the member. Use your imagination. You could paint your name on a board, stitch in fabric, write your name in glue on a poster board and sprinkle glitter over it, cut out block letters and string them together to make your name, glue macaroni in the shape of your name on paper and paint it or finger-paint your name on fabric.

**DIVISION:** 2<sup>nd</sup> GRADE

**EXHIBIT:** A pencil box or pencil holder you made according to the example in your manual or one of your own design.



# MINI HORSELESS HORSEMAN

**DIVISION:** Kindergarten & 1<sup>st</sup> GRADE

**EXHIBIT:** Color and identify the parts of the horse in your manual. Display the picture on an 16” x 20” poster displayed HORIZONTALLY.

**DIVISION:** 2<sup>nd</sup> GRADE

**EXHIBIT:** Color and mount the horse & foal picture from your manual on a 16” x 20” poster. Identify the parts of the horse. Display the poster HORIZONTALLY.

# MINI LIVESTOCK POSTER

**DIVISION:** Kindergarten & 1<sup>st</sup> GRADE

**EXHIBIT:** Complete one of the charts (cow, pig or sheep) in the manual identifying the parts of the animal. Display the chart on a 16” X 20” poster displayed HORIZONTALLY.

**DIVISION:** 2<sup>nd</sup> GRADE

**EXHIBIT:** Complete the two charts you did not do in Division – 1<sup>st</sup> in your manual, identifying the parts of the animals, and mount them on a 16” X 20” poster displayed HORIZONTALLY. Color the animals and below each one list the breed of the animal and three (3) characteristics of that breed.



# MINI MY PET & ME

**DIVISION:** ALL

**EXHIBIT:** Choose one of the following.

1.) A scrapbook, homemade or purchased, 4 pages minimum, about a pet you have or about a pet you would like to have. Include photographs or cut-out pictures of the pet and tell why you like the pet. Put the title “My Pet & Me” on the cover along with your name, grade and club name.

2.) A 16” X 20” poster displayed HORIZONTALLY of pictures of you and your pet or of a pet you would like to have. Drawings, cut-outs or photographs may be used. “My Pet & Me “ should be across the top of the poster.





# MINI PHOTOGRAPHY

Capturing memories in photographs is a pastime many people enjoy. Do you like to take pictures? It is fun to experiment taking different kinds of pictures. Do you like taking pictures of animals, people, or scenery? Did you take a camera with you on your last vacation or visit to the zoo? In Mini 4-H, you will have the opportunity to share the best pictures you have taken.

Cameras often come with suggestions on how to take a good picture. You can consult books at the library or the regular 4-H Photography manual for help in improving your picture taking skills. Take at least twenty- four (24) pictures.

**DIVISION:** ALL

**EXHIBIT:**

All Divisions

- Pictures are to be no smaller than 3 ½" X 5 " and no larger than 4" X 6" .
  - Pictures must be taken by the Mini 4-Her within the last year.
  - Pictures should be mounted with glue.
  - Poster must be covered with plastic and on a sturdy backing (foam core board).
  - Place a label with your name and grade in the lower right hand corner of the poster.



1<sup>st</sup> GRADE- Exhibit 3 color pictures (one of an animal, one of person, and one of scenery) you have taken on a 16" X 20" poster. Number each picture and place a title at the top of your poster. The title may be of your choosing.

2<sup>nd</sup> GRADE- Exhibit 3 or 4 color pictures that tell a story about one topic on a 16" X 20" poster. Number and label each picture according to what it tells about your topic. Place a title at the top of your poster that tells the topic you have chosen.

# MINI SEWING

**DIVISION:** Kindergarten & 1<sup>st</sup> GRADE

**EXHIBIT:** Exhibit one simple square pillow around 14" x 14". This may with be sewn on a machine (if person helping feels comfortable) or it may be sewn all by hand. Feel free to use burlap, felt or cotton material, and any thread that the mini 4-Her feels comfortable using.

(Continued on next page)

## Mini Sewing Continued ...



**DIVISION:** 2<sup>nd</sup> GRADE

**EXHIBIT:** Exhibit either a square pillow around 14" x 14" with a decorative button(s) or applique sewn on. We would like to see this sewn on a machine (if person helping feels comfortable) or it may be sewn all or partially by hand. Feel free to use burlap, felt or cotton material, and any thread that the mini 4-Her feels comfortable using.

## MINI SHOOTING SPORTS

**DIVISION:** Kindergarten & 1<sup>st</sup> GRADE

**EXHIBIT:** Exhibit one of the following: Identify 4-6 common Indiana game on a poster. Mount a picture along with the habitat they prefer. OR make a box turkey call.

**DIVISION:** 2<sup>nd</sup> GRADE

**EXHIBIT:** Identify one of the following: different types of carries, parts of a gun, parts of a bow & arrow, different types of ammunition or arrow tips and what it is used to hunt. Please mount them on a poster for display.



## MINI SMALL ANIMALS

**DIVISION:** Kindergarten & 1<sup>st</sup> GRADE

**EXHIBIT:** Exhibit one of the completed charts (goat, chicken, or rabbit) from the manual identifying the parts of the animal. Mount the chart on 16" X 20" poster and display it HORIZONTALLY.

**DIVISION:** 2<sup>nd</sup> GRADE

**EXHIBIT:** Complete the other two charts that you did not complete in Division – 1st Grade. Identify the parts of the two animals, color them, and below each animal or bird list the breed of that animal or bird, and list three (3) characteristics of that breed. Mount the two charts on a 16" X 20" poster and display HORIZONTALLY.

# MINI SPORTFISHING

**DIVISION:** Kindergarten & 1<sup>st</sup> GRADE

**EXHIBIT:** Tie a weight onto the end of a fishing line and toss 10 times into a bucket. You will do this at 10ft, 15ft and 20ft from the bucket. Keep record of how many you make and miss. Make sure a parent/guardian takes pictures of you doing this. Mount the pictures on a poster board along with the chart of how many makes and misses you did with each distance.

**DIVISION:** 2<sup>nd</sup> GRADE

**EXHIBIT:** Fish Identification: please identify between 4-6 different types of fish you like to fish for. Place a picture of each with its name, where the best place to catch them and what they like to eat onto a poster for display.



# MINI WILDLIFE

**DIVISION:** Kindergarten & 1<sup>st</sup> GRADE

**EXHIBIT:** The colored, completed pages from your manual displayed on a 16" X 20" poster displayed HORIZONTALLY. Pages should appear from left to right in this order: Oscar Owl, Dudley Dove, Cheeky Chipmunk. Make sure each animal/bird is labeled (Oscar Owl, Seymour Snake, etc.) and that a line is drawn from the animal/bird to its food. Color the animals and birds the way they look in real life.

**DIVISION:** 2<sup>nd</sup> GRADE

**EXHIBIT:** The colored, completed pages from your manual displayed on a 16" X 20" poster displayed HORIZONTALLY. Pages should appear left to right in this order: Casey Cardinal, Robbie Robin, and Elmer Squirrel. Label the animals and bird and draw a line from it to the food it eats. Make sure you color them the way they look in real life.

# WOODWORKING

**DIVISION -** 1<sup>st</sup> GRADE

**EXHIBIT-** Purchase a birdhouse kit from the Extension Office. You may finish the birdhouse however you like (stain, varnish, or paint). You may add decorative items to your birdhouse to make it more personalized if you would like.

**DIVISION -** 2<sup>nd</sup> GRADE

**EXHIBIT -** Purchase a toolbox kit from the Extension Office. You may finish the toolbox how you like (stain, varnish, or paint). Please feel free to customize your toolbox how you see fit. Your toolbox may be as many colors as you would like, or it may be all one color with your name painted on the side. Let your creativity shine!



**MINI LIVESTOCK SHOWMANSHIP**  
**DIVISION: ONLY FOR 1<sup>st</sup> and 2<sup>nd</sup> Grade**

**RULES FOR EXHIBITION**

- 1) A Mini 4-H member may sign up for the “Mini Livestock” project and exhibit one specie at the Fountain County 4-H Fair. The animal must be planned to be exhibited by the 4-H mentor whom is in 7th grade or above whom is approved by the Extension Office.
- 2) The Mini 4-H member may show one species, weighing less than 300 pounds. The **ONLY** animals allowed to be shown are swine, sheep, goats, rabbits and poultry.
- 3) A Mini 4-H member must have a 4-H mentor (*a current 4-H member*), who is at least a 4<sup>th</sup> year member of that specific project.
- 4) Mini 4-H members are encouraged to choose their own mentor. The mentor must be a 4-H member who participates in 4-H in Fountain County and meets the 4<sup>th</sup> year requirement. It is the responsibility of the Mini 4-H member and their parents to contact and set this arrangement up before filling out the enrollment form. **This form must be turned in to the Extension office by May 15th, to be eligible to participate in this project.**
- 5) It is strongly encouraged that the Mini 4-H member locates a mentor that they would like to work with. However, if a Mini 4-H member does not know of someone that can serve as their mentor, the project committee will assist the Mini 4-H member in locating one. Please contact Adam Tyler, 4-H Extension Educator for assistance. *The goal of this project is to allow any First or Second Grade Mini 4-H member to participate.*
- 6) A mentor can be assigned to two Mini 4-H members, if they would like and approved by the Extension Office. (We understand for some families and certain situations, this may be the best option). However, the mentor needs to take into account the time commitment involved with mentoring two Mini 4-H members. There will be a meeting in which the mentors are required to attend. This meeting will also serve as a meeting site for introduction of mentors and mentees.
- 7) The Mini 4-H member cannot exhibit his/her own animal, but will show an animal already being exhibited at the Fountain County 4-H Fair.
- 8) The Mini 4-H member will be required to work with the animal in three, one-hour sessions, before exhibiting at the fair. Arrangements for these sessions will be left to the Mini 4-H’ers family and mentor. The safety policy for Mini 4-H members must be followed. If the requirements are not met or safety policies not followed, the Mini 4-H member will not be allowed to exhibit the animal. If you have any questions, or you may call the Extension Office. A log sheet will be required with signature from the mentor and the Mini 4-Hers in order to eligible to exhibit the animal at the Fountain County 4-H Fair.
- 9) **YOU MUST ALSO PARTICIPATE IN ANOTHER BUILDING PROJECT! THIS IS A REQUIRMENT TO BE ABLE TO SHOW ON THE DAY OF THE LIVESTOCK SHOW. IF YOU DO NOT TURN IN A BUILDING PROJECT, THEN YOU WILL NOT BE ALLOWED TO SHOW YOUR MENTORS ANIMAL.**
- 10) **YOU ARE NOT ALLOWED TO BRING ONE OF YOUR OWN ANIMALS TO THE SHOW. This has to be an animal that is owned by your mentor.**

## **EXHIBIT REQUIREMENTS**

- 1) The Mini 4-H member will show his/her mentors assigned animal in a non-competitive Mini 4-H Showmanship class during the 4-H Livestock Specie Show. (this will be at the beginning or the end of the show dependent on the discretion of the superintendent.)
- 2) The Mini 4-H members will not be placed, but the judge will be encouraged to give helpful hints for future exhibition.
- 3) The mentor must be in the ring to assist the Mini 4-H member.

The goal of this project is to allow Mini 4-H members a chance to practice their skills in the show arena, as well as learn what goes into taking care of and exhibiting an animal at the Fountain County 4-H Fair. Our hope is that this project will encourage Mini 4-H members to try something new, learn life-long skills, make new friends, and gain an excitement for 4-H that they will carry with them throughout a 10 year 4-H career.

### **Safety Policy for Mini 4-H Members:**

The safety and well-being of our 4-H youth is of the utmost importance. Although kindergarten is specified as the time when a child may begin participation in some 4-H events and activities, parents are encouraged to take into consideration their child's physical and mental development before agreeing to let the child begin to show, work with, or care for animals. Each child matures at a different rate, and children in grades 1-2 may still be too young to begin showing, working with, or caring for animals.

The State 4-H Youth Program at Purdue University has agreed to allow Mini 4-H members in grades 1-2, to participate in some animal projects subject to certain conditions. These conditions are specified below.

Each county may determine its own **NON-COMPETITIVE** programs, classes, and participation requirements subject to the following safety guidelines:

“Mini 4-H members, in grades 1 through 2, will be allowed to show, work with, or care for animal projects after their parent or legal guardian has signed a liability release. Mini 4-H members may independently show, work with, or care for animals that weigh 300 pounds or less.”

If the guidelines stated in this policy are not followed for a particular event or activity, then such event or activity shall not be considered to be a 4-H event or activity and shall not be under the auspices of Extension 4-H Educators or covered by Purdue University.



**Mini 4-H Livestock Project – Exhibitor Enrollment Form**  
**DUE MAY 15th TO EXTENSION OFFICE**

*Please print all information.*

Mini 4-H'er Name: \_\_\_\_\_

Parent Name: \_\_\_\_\_

Address: \_\_\_\_\_

Phone: \_\_\_\_\_ Email: \_\_\_\_\_

Emergency Contact Name: \_\_\_\_\_

Emergency Contact Phone: \_\_\_\_\_

Choose one specie that the Mini 4-H member would like to exhibit at the Fountain County 4-H Fair.

\_\_\_\_\_ Swine                      \_\_\_\_\_ Goats                      \_\_\_\_\_ Sheep  
\_\_\_\_\_ Rabbits                      \_\_\_\_\_ Poultry

I, the Mini 4-H member and my family, understand that I must have a mentor to help me when exhibiting. I understand that my mentor must be at least a 5 year member in the livestock project I am exhibiting. I also understand that I (the Mini 4-H member) am required to complete 3 one-hour sessions with my mentor for the specie I choose to exhibit.

I understand it is the responsibility of me and my family to contact and set this arrangement up with my mentor before submitting this enrollment form.

Specie #1: \_\_\_\_\_

Mentor name: \_\_\_\_\_

Mentor parent name: \_\_\_\_\_

Mentor address: \_\_\_\_\_

Mentor telephone: \_\_\_\_\_ Email (if applicable): \_\_\_\_\_

I agree to allow my child to exhibit at the Fountain County 4-H Fair, in the non-competitive Mini 4-H Livestock Project. By signing below, I state that I have read and agree to the safety policy for Mini 4-H members (located on the back of this enrollment form).

\_\_\_\_\_  
Signature of Parent/Legal Guardian

\_\_\_\_\_  
Date



Purdue Extension  
Fountain County

# Mini 4-H Work / Mentor Verification Form



As a 4-H Program, we appreciate that we have amazing volunteers and mentors who provide the opportunity for our Mini 4-H'ers to gain experience with specific livestock species. One thing that is key for the success of youth is the time and work they put into their projects.

As a requirement, **ALL** Mini 4-H'ers that show an approved livestock animal **MUST submit this form to the extension office or the Mini 4-H Leaders prior to the first day of the 4-H Fair to be eligible to participate in the Mini 4-H Livestock Show for the species they chose.**

Below your Mentor and Parent Must verify that you worked with your livestock animal a minimum of 3 times prior to the 4-H Fair. The form will be signed and verified by the 4-H Educators and Mini Leaders and once form is certified, only at that time will the youth be allowed to enter the show ring for your species show.

<i>Date of Work</i>	<i>Work Done</i>	<i>Mentor Signature</i>	<i>Mini 4-H Parent / Adult</i>
---------------------	------------------	-------------------------	------------------------------------


\_\_\_\_\_  
*Mini 4-H Leader*

\_\_\_\_\_  
*4-H Educator*

*Mini 4-H Member Name:* \_\_\_\_\_

*Date Form Received:* \_\_\_\_\_ *Member Eligible to Show:* YES NO

# MINI 4~H RECORD SHEET

## Grade Kindergarten

NAME \_\_\_\_\_

ADDRESS \_\_\_\_\_

SCHOOL \_\_\_\_\_ TOWNSHIP \_\_\_\_\_

1.) Which project did you choose for your exhibit? \_\_\_\_\_

\_\_\_\_\_

2.) Describe your project: \_\_\_\_\_

\_\_\_\_\_

\_\_\_\_\_

3.) What did you learn while completing your project? \_\_\_\_\_

\_\_\_\_\_

\_\_\_\_\_

\_\_\_\_\_

4.) Who helped you complete your project? \_\_\_\_\_

\_\_\_\_\_

**When you have completed your project, have your Mini 4-H Leader sign below**

\_\_\_\_\_

Signature of Mini 4-H Leader

\_\_\_\_\_

Date

# MINI 4-H RECORD SHEET

## Grade 1

NAME \_\_\_\_\_

ADDRESS \_\_\_\_\_

SCHOOL \_\_\_\_\_ TOWNSHIP \_\_\_\_\_

1.) Which project did you choose for your exhibit? \_\_\_\_\_

\_\_\_\_\_

2.) Describe your project: \_\_\_\_\_

\_\_\_\_\_

\_\_\_\_\_

3.) What did you learn while completing your project? \_\_\_\_\_

\_\_\_\_\_

\_\_\_\_\_

\_\_\_\_\_

4.) Who helped you complete your project? \_\_\_\_\_

\_\_\_\_\_

**When you have completed your project, have your Mini 4-H Leader sign below**

\_\_\_\_\_

Signature of Mini 4-H Leader

\_\_\_\_\_

Date

# MINI 4~H RECORD SHEET

## Grade 2

NAME \_\_\_\_\_

ADDRESS \_\_\_\_\_

SCHOOL \_\_\_\_\_ TOWNSHIP \_\_\_\_\_

1.) Which project did you choose for your exhibit? \_\_\_\_\_

\_\_\_\_\_

2.) Describe your project: \_\_\_\_\_

\_\_\_\_\_

\_\_\_\_\_

3.) What did you learn while completing your project? \_\_\_\_\_

\_\_\_\_\_

\_\_\_\_\_

\_\_\_\_\_

4.) Who helped you complete your project? \_\_\_\_\_

\_\_\_\_\_

When you have completed your project, have your Mini 4-H Leader sign below

\_\_\_\_\_

Signature of Mini 4-H Leader

\_\_\_\_\_

Date