

BEEF QUALITY ASSURANCE

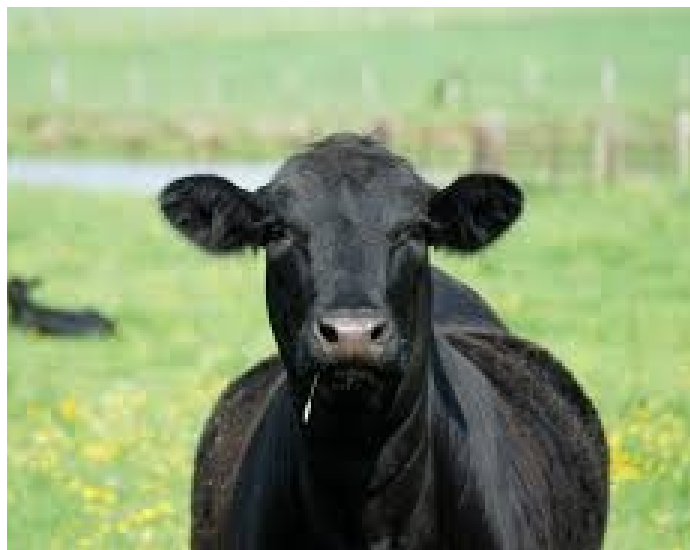
This certification program is for anyone that is raising dairy cattle or beef cattle for market. This certification lasts for three years and you can receive a premium at market for being a certified producer.

Please RSVP by contacting Kathryn Jennings at (574) 533-0554 jennin30@purdue.edu, or Abby Anspach at (574) 223-3397 newman0@purdue.edu

Anyone under 18 must be with an adult to be able to attend

If you are in need of a translator to attend this program, please contact Abby Anspach at (574) 223-3397 newman0@purdue.edu two weeks in advance.

If you need any accommodations to attend, please contact Abby at 574-223-3397 newman0@purdue.edu two weeks in advance.



**Fulton County 4-H
Fairgrounds**

September 17TH | 6-9 PM

**1009 W 3rd St.
Rochester, IN 46975**

Purdue University prohibits discrimination against any member of the University community on the basis of race, religion, color, sex, age, national origin or ancestry, genetic information, marital status, parental status, sexual orientation, gender identity and expression, disability, or status as a veteran.