

ELKHART COUNTY 4-H ARTS AND CRAFTS MANUAL



Purdue University is an equal opportunity/equal access/affirmative action institution.



Table of Contents

	Page
I. General requirements	1
II. Champion & State Fair Selection	2
III. Fine Arts	3
IV. Needlecraft	4
Counted Cross-Stitch Needlepoint, Candlewicking, Hand Quilting, Hand Applique', Tatting, Punch Needle, Chicken Scratching, Twilling, Huck Weaving, Crewel, Cutwork, Smocking, Knitting, Embroidery, Crochet, Huck Embroidery, Hemstitching	
V. Basic Crafts	
Plastic Canvas	5
Candlemaking	6-7
Decorated Wall Hanging	8
Jewelry	9-10
Fabric Craft	10
Wearable Art	11
Latch Hook	12
Miscellaneous Crafts	13
Macramé, Wood Craft, Leather Craft, Metal Craft, Origami, Tole Painting, Basket Weaving, etc. (anything not listed as a Fine Art, Needlecraft, or Basic Craft can go in Miscellaneous Crafts)	

Note: This manual contains many of the Arts and Crafts project options in Elkhart County. The following Arts and Crafts projects have their own manual and record sheets available online or in the Elkhart County Purdue Extension Office:

- Architectural Models
- Ceramics (Greenware and Handbuilding)
- Farm Toy Scene
- Gift Wrapping
- Model Building
- Recycling

I. General Requirements

Welcome to the Elkhart County 4-H Arts and Crafts project! This manual contains the exhibit requirements for all Arts and Crafts levels.

All Arts and Crafts exhibits must be finished and ready to use. Pictures must be framed and ready to hang, rugs bound, pillow tops stuffed and ready to use, etc. Those that are not finished will be marked down one ribbon grade.

A Project Description Reference Card must accompany all projects. The card must list the name, club name, project name, school grade completed, techniques and materials used, how the article was made, and how you will use or display the article.

Follow the exhibit guidelines listed in this manual to complete the art or craft you have selected. Fill out the Elkhart County 4-H Arts & Crafts Record sheet completely and turn it in to your club leader. You may enter your project at the ECCC, Elkhart County 4-H Fairgrounds on the designated project check-in date.

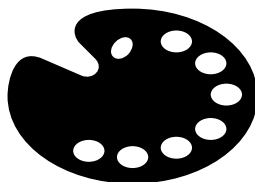
Helpful Tips

- The use of kits is discouraged in any category except Level A.
- Have fun with your project. Be creative and original. Do your own work. Don't copy others.
- Suggested projects are only suggestions.
- If you have any questions about whether your project is suitable for the Fair, ask your 4-H leader before you start working on the project.

Contact your 4-H leader or the Purdue Extension Elkhart County Office with questions about project requirements: 574-533-0554.

Judging Tips

The school grade of the member will be considered when judging the article. Exhibits will be judged according to usefulness, suitability of design, workmanship, finish, and use of color.



II. Arts and Crafts Champion and State Fair Selection

Elkhart County may send twelve craft entries to the State Fair. The entries will come from the following categories:

Fine Arts (*two entries per county*)

Oil, charcoal, pastels, pencil, ink, acrylic, watercolor or similar artistic work can be displayed on canvas, canvas board, or paper. All work must be framed as a picture and prepared for hanging. Canvas art on a wooden frame is considered prepared for hanging provided that frame has a hanger.

Needlecraft (handwork) (*two entries per county*)

Hand crafted knitting, embroidery, crocheting, needlepoint, crewel, candle wicking, chicken scratching, hand quilting, tatting, huck embroidery, and hemstitching are suggested exhibits. Entries may also include pulled, drawn and counted thread work and punch needle work. Needle craft exhibits do not include latch hook, plastic canvas, machine knitting, machine quilting, or arm knitting/crocheting.

Model Craft (*two entries per county*)

A small scale replica made of injected styrene plastics. Wood, paper, clay die-cast, or snap together models are not permitted. Exhibits from building blocks (Lego) are not permitted.

Construction and Architectural Replica (*one entry per county chosen from the Farm Toy Scene and Architectural Model project entries*)

Exhibits can include farm scenes, town models, building replicas, or similar items and can be constructed from building blocks (Lego), erector sets, or other materials.

Arts and Crafts, General (*five entries per county*)

Youth may exhibit any art or craft that does not meet exhibit requirements in Fine Arts, Needle Craft, Model Craft or Construction and Architectural Replica.

Champions and Reserve Champions will be selected from the honor groups of each level in each project.

State Fair entries will require completion of the State Fair 4-H Craft Information Card (4-H-618-W).

All projects are judged by the grade of the exhibitor in the year in which they finish the project. For example, if Johnny is in the 5th grade in the 2018-2019 school year, his project will be entered as a 5th grader at the 2019 Elkhart County 4-H Fair.

III. Fine Arts

Description:

Allows youth to learn life skills and grow in project knowledge while expressing creativity through painting and drawing.

Exhibit Guidelines:

All arts and craft exhibits must include a 4-H Project Description Reference Card. This information card is to describe work completed so the judge can more accurately evaluate the exhibit. Craft information cards are for judging purposes only and will not be returned to the exhibitor.

Oil, charcoal, pastels, pencil, ink, acrylic, watercolor or similar artistic work can be displayed on canvas, canvas board, or paper. All work must be framed as a picture and prepared for hanging. Canvas art on a wooden frame is considered prepared for hanging provided that frame has a hanger. Hanger must be suitable for size and weight of picture. If the exhibit is not ready for hanging, it will be marked down one ribbon grade.

If copying a picture for exhibit (such as a photograph), include the original with your finished project. Mount it on the back of your exhibit.

Subject matter should be appropriate for family viewing (G-Rated). The use of copyrighted materials is strongly discouraged.

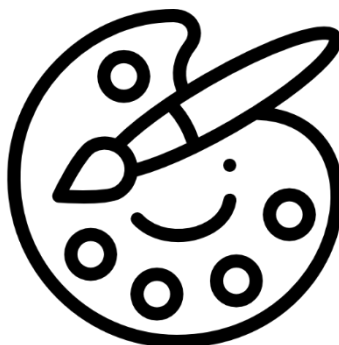
Judges evaluating exhibits should recognize individual differences and creativity, therefore using information in this document as a guide rather than a requirement.

Note - Projects will be judged by the following grade categories:

Level A: 3rd - 5th grade

Level B: 6th - 8th grade

Level C: 9th - 12th grade



IV. Needlecraft

Exhibit Guidelines:

All articles made must be finished and ready to use (see Elkhart County Arts & Crafts manual for specific information and suggested projects).

All arts and craft exhibits must include a [Project Description Reference Card](#). This information card is to describe work completed so the judge can more accurately evaluate the exhibit. Craft information cards are for judging purposes only and will not be returned to the exhibitor.

Counted cross-stitch, Hand crafted knitting, embroidery, crocheting, needlepoint, crewel, candle wicking, chicken scratching, hand quilting, tatting, huck embroidery, and hemstitching are suggested exhibits. Entries may also include pulled, drawn and counted thread work and punch needle work. Needle craft exhibits do not include latch hook, plastic canvas, machine knitting, machine quilting, or arm knitting/crocheting. **Projects completed on hand looms such as Knitting Knobby, Knifty Knitter, Knitting Jennie, etc., do not qualify for this category and should be entered in Miscellaneous Crafts.**

Judges evaluating exhibits should recognize individual differences and creativity, therefore using information in this document as a guide rather than a requirement.

Exhibit Class Guidelines:

Beginner (grades 3-5 suggested)

Create and exhibit one age/grade appropriate needle craft.
Suggested projects: Picture, jar lid cover, pincushion, bib, Christmas ornament, bookmark, tea towel, bell pull, placemat, pillow.

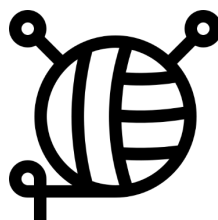
Intermediate (grades 6-8 suggested)

Create and exhibit one age/grade appropriate needle craft.
Suggested projects: Pillow, picture, table runner, dresser scarf, tote bag, banner, baby afghan, Christmas stocking.

Advanced (grades 9-12 suggested)

Create and exhibit one age/grade appropriate needle craft.
Suggested techniques are: Blackwork (different patterns filling in a design on even weave fabric), Assisi (background filled in and design plain), pulled thread, drawn thread, Hardanger, or other stitches. Beads may be used in this level.

Suggested projects: Large picture, tablecloth, large complicated sampler, large afghan, tree skirt, band sampler, or Christmas stocking (full scene).



V. Basic Crafts

Plastic Canvas

1. See General Requirements.
2. The article you exhibit must be finished and ready to use.

LEVEL A (grades 3 & 4)

1. Learn to make straight cuts on plastic canvas.
2. Learn to make simple stitches (continental, half cross, and overcast).
3. Keep designs simple.
4. Exhibit one article you have made.

Suggested projects: book mark with/without yarn tassel or a small refrigerator magnet.

LEVEL B (grades 5 & 6)

1. Learn to make intricate cuts.
2. Learn to make three stitches (continental, slanted gobelin, mosaic) and overcast stitch.
3. Learn to connect a minimum of three pieces of cutwork.
4. Exhibit one article you have made.

Suggested projects: a note holder for refrigerator or to lay by the phone, Christmas tree ornaments, square tissue box cover, trinket box with cover, or a vase for a potted plant.

LEVEL C (grades 7, 8, 9)

1. Use techniques learned in previous divisions increasing in difficulty.
2. Learn to make additional connections.
3. Use at least three types of stitches with a minimum of four colors of yarn.
4. Exhibit your completed project.

Suggested projects: wall hanging, wreath, book cover, picture frame, set of round or square coasters with holder.

LEVEL D (grades 10, 11, 12)

1. Use techniques learned in previous divisions increasing in difficulty.
2. Learn to use more intricate casting.
3. Exhibit your completed project.

Suggested projects: miniature room with furniture, clock, etc.

Candlemaking

No gel candles can be exhibited in Candlemaking. Since gel candles do not require the same heating and molding techniques as wax or paraffin candles, they do not meet the requirements for this project.

1. See General Requirements for Crafts.
2. All candles in Level B and above should have a sturdy base.
3. In this project you will learn to make good quality candles that can be useful and decorative. You will use different types of wicks, colors, and scents. You will have better results if you use candle wax instead of paraffin. In all divisions the following goals should be kept in mind:
 - a. Uniformity of color
 - b. Absence of air bubbles
 - c. Smoothness of surface
 - d. Finish of seams
 - e. Finish of bottom where wick is inserted
 - f. Balance and creativity
4. Candles for decoration only should be labeled as such.
5. See Candle Making handout for more details and tips.

LEVEL A (grades 3 & 4) – Patio Candles

1. Learn to melt wax and get good color, shape, and quality in the candle, plus set the wick properly.
2. Experiment with different types of containers to make permanent patio candles. A patio candle is a candle that has been poured in a permanent container with a wick in the center, and that has not been decorated in any way. Types of containers are limited only by the imagination – glass jars, metal cans, etc.
3. Exhibit one patio candle in its container. Candles should be one solid color.

LEVEL B (grades 5 & 6) - Undecorated Molded Candles

1. The aim is to learn the basics of making candle molds. Candles are not to be decorated or painted, just plain.
2. You will need to make poured candles using plain or simple molds in a solid color. Use rigid plastic, glass, or metal molds. Wax containers will leave an undesirable film on the finished candle. Examples of molds could be bottles, cans, jars, etc.

Ice Candle or Layered Candle

1. Ice candles – made using wax and ice.
2. Layered candles – a minimum of three pourings. Layers must be visible.

Exhibit one undecorated candle removed from the mold **OR** one ice candle removed from the mold, **OR** one layered candle removed from the mold. Candle needs to be displayed on a sturdy base.

LEVEL C (grades 7, 8, 9)

Whipped Candles

1. Learn to whip and use whipped wax in candles.
2. Experiment and make several candles using whipped wax.
3. Examples of candles with whipped wax are: snowball candles, picture candles, sodas, sundaes, and frosted Christmas trees.

Decorated Molded Candles

1. The aim is to increase experience in making candles and improve the quality of workmanship of the base and decoration done with simple molds. Use a combination of skills obtained in previous divisions.
2. Candles can be decorated with paint, whipped wax, wax flowers, glitter, sand, sequins, rub & buff, etc.

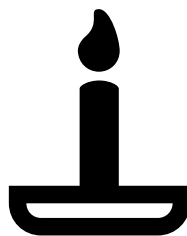
Exhibit one decorated candle made with whipped wax **OR** a molded candle that has been decorated. Candle needs to be displayed on a sturdy base.

LEVEL D (grades 10, 11, 12)

1. Learn to combine candles with other materials and use more advanced molds with skills learned in earlier years.
2. Make centerpieces and displays that may be seasonal or for all occasions.
3. Candles may be combined with greenery, flowers, pottery, glass, etc.

Exhibit a candle that has had decoration added and is suitable for a table arrangement, centerpiece, or room decoration. Candle needs to be displayed on a sturdy base.

“The Encyclopedia of Candle Making Techniques” is available as a reference book for any 4-H member to check out. The book may be checked out for 2 weeks at a time.



Decorated Wall Hanging

The project is to be judged based on overall appearance and skill.

Article(s) must be ready to hang on a hook or nail. Hangers must hold the weight of the article. Pop-tabs are not acceptable as hangers. It is best if the hanger is hidden and does not detract from the appearance of the article.

Members are encouraged to experiment with beads, lace, ribbon, different types of wreaths, dried materials, potpourri, silk flowers, wire, metal, burlap, vinyl lettering (signs), canvas (not painting & drawing), etc.

LEVEL A (grades 3 & 4)

Exhibit one finished article that shows basic learning skills for a given technique. Finished article should be no smaller than 4" x 4" (16 square inches) and no larger than 25" x 25" (625 square inches). **Article(s) must be ready to hang.**

Suggested projects include: Simply decorated wreath or hat which includes a self-made bow, simple paper twist article, clock, message board, key holder, pressed flowers, quilling or boards.

LEVEL B (grades 5 & 6)

Exhibit one finished article that shows an improvement of skills and application of color or design. Finished article should be no smaller than 6" x 6" (36 square inches) and no larger than 35" x 35" (1225 square inches). **Article(s) must be ready to hang.**

Suggested projects include: Decorated wreath or hat which includes a self-made bow, masquerade mask, clock, message board, key holder, tole painting, board, doors or windows.

LEVEL C (grades 7, 8, 9)

Exhibit one finished article that shows an advancement of skills and application of color or design. Finished article should be no smaller than 6" x 6" (36 square inches) and no larger than 35" x 35" (1225 square inches). **Article(s) must be ready to hang.**

Theme required. Holiday or special occasion themed. Include holiday/special occasion on card.

LEVEL D (grades 10, 11, 12)

Exhibit one finished article that shows an advancement of skills and application of color or design. Finished article should be no larger than 52" x 52" (2704 square inches). **Article(s) must be ready to hang.**

Suggested projects include: A grouping of up to three items (a grouping of up to three (3) items is considered one (1) finished article), message board, clock, locker organizer, stained glass, tole painting, windows or doors.



Jewelry

Jewelry is the art of creating personal adornment with materials such as but not limited to: metal, glass, and clay. All Jewelry will be judged on workmanship appearance and creativity.

All Jewelry exhibits must be mounted on a black covered board or black jewelry mannequin-style stand, either free-standing or with an easel back, no smaller than 3" x 5" nor larger than 12" x 12". All pieces should be on one display board/stand. Jewelry should not be covered, thus keeping the entire project visible and accessible to be judged.

Exhibit **MUST** include a card with list of materials used, techniques used, and what you learned while doing this project. Failure to follow exhibit guidelines will result in a reduction in the scoring.

List of Jewelry pieces that can be exhibited: Bracelet, Necklace, Pair of Earrings, Pin, Ring, Hair Accessories, and Chatelaine. Before placing any jewelry pieces on the boards, please wear it to make sure it is wearable and lays correctly and comfortably.

Level A (3rd – 4th Grade)

Exhibit 1 or 2 pieces of jewelry from the list that shows basic skills that were learned. **Kits are allowed.** Use appropriate closures. The piece should be color coordinated, but can be made from multiple materials that coordinate. Display on appropriate size black display board or mannequin, with description card. Display must be no larger than 12" x 12".

Level B (5th – 6th Grade)

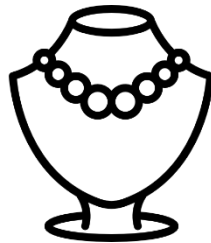
Exhibit 2 or 3 pieces of jewelry. Pieces do not need to match each other. Members are encouraged to try different techniques such as macramé, bead weaving, multiple strand, crimp covers, etc. **Kits are allowed.** Members should be using a clasp; no knots, no stretchy string, and not your parents' fishing line. You should be using beading wire. Display on appropriate size black display board or mannequin, with description card. Display must be no larger than 12" x 12".

Level C (7th – 9th Grade)

Exhibit at least 2 pieces of jewelry. At least 1 piece should be an original piece with a pattern included and at least 1 published pattern with pattern included. Patterns can be found online, in beading books at craft stores and in beading magazines. Original designs may also be used. **Original patterns should include a supplies list, techniques used, step by step instructions and are to be written by the 4-H member and not a published pattern.** Pieces do not need to match but show different techniques the member has learned. Clasp must be used at this level. **No kits are allowed.** Display on appropriate size black display board or mannequin, with description card. Display must be no larger than 12" x 12". Please designate if design is from a pattern or an original design. **For published patterns, please print or copy them and give credit to designer in a copyright format. Examples: Source: wigjig.com Source: firemountaingems.com. ALL PIECES MUST HAVE A PATTERN!**

Level D (10th – 12th Grade)

Exhibit 3 or 4 pieces of jewelry. The pieces do not need to match each other but show different techniques that the member has learned. Members are encouraged to try advanced skills, such as: wire wrapping, double crimping, headpin loops, making clay beads, looming, etc. Two pieces should be original designs, and original piece must have pattern written by the 4-H member on 8 ½" x 11" paper in an envelope, turned in with the project. **No kits allowed.** Display on appropriate size black display board or mannequin, with description card. Display must be no larger than 12" x 12". **For published patterns, please print or copy them and give credit to designer in a copyright format. Examples: Source: wigjig.com Source: firemountaingems.com. ALL PIECES MUST HAVE A PATTERN!**



Fabric Craft

All articles must be finished and ready to use. Items may be sewn by hand or machine, glued, tied, knotted, etc. Projects must be made by the 4-H'er and not purchased and decorated. Items that meet Sewing Non-Wearable requirements should be exhibited in Sewing.

Make useful articles. Be creative and original. Articles will be judged primarily on design and decoration.

Suggested projects include: quiet books, purses, shopping bags, costume pieces, wall hangings, quilts, quilted items, hats, dolls, doll clothes, teddy bears, teddy bear & animal clothing, no-sew fleece items.

Level A (grades 3 & 4) and **Level B** (grades 5 & 6)

Exhibit one article that shows basic learning skills for the craft. Original designs, simple preprinted fabric projects, simple kits, no sew fleece or patterns may be used in Levels A & B.

Level C (grades 7, 8, 9) and **Level D** (grades 10, 11, 12)

Exhibit one article or set of articles that shows an improvement of skills and application of color or design. Original designs or altering of patterns is encouraged. Special occasion, seasonal items and embellishments (such as glued on jewels, iron on appliqués, trims, and beads) may be used. Advanced preprinted fabric projects and advanced kits may be used in Levels C & D. Original designs, simple preprinted fabric projects, simple kits, no-sew fleece items or patterns can only be exhibited in Levels A & B.

Wearable Art

Wearable Art includes an article of clothing that can be worn that is creatively decorated OR an accessory worn or carried. See level requirements below for specific exhibit requirements.

1. Exhibit must have been completed after the previous fair.
2. Exhibits should show a great degree of difficulty each year.
3. Cross-stitching does not fit into this category. It has its own division.
4. Clothing including items such as a t-shirt, sweat shirt, jumper, skirt, pair of pants, pair of shorts, or apron.
5. An accessory includes such items as a tote bag, hat, shoes, pair of socks, or a belt. Hair accessories and jewelry may be exhibited only if part of an ensemble.
6. Examples of acceptable techniques for wearable art include:
Tie-dye, sponge painting, colorpoint, fusible applique with paint finished or machine finished, free hand painting, fabric painting, jeweled designed (five or more colors or styles of jewels), embellishments (beads, studs, jewels, etc.)

****MAKE SURE THE TECHNIQUE SELECTED IS ONLY ON THE REQUIRED NUMBER OF SIDES OF THE ARTICLE. REVIEW THE REQUIREMENTS OF LEVEL A-D BEFORE DECORATING YOUR EXHIBIT ****

You may use an original design or variation of a pattern or patterns. You may use specialty threads or embellishments. Use your imagination!

Level A (3rd - 4th Grade)

Exhibit a finished article of clothing (see list from #4 above) decorated on one side only, front or back.

Level B (5th - 6th Grade)

Exhibit a finished article of clothing (see list from #4 above) with no more than three separate decorated areas per article OR a tote bag with no more than three separate decorated areas.

Example: front and back and/or sleeves.

***Kits are not encouraged.**



Level C (7th - 9th Grade)

Exhibit a finished article of clothing (see list from #4 above) AND one accessory (see accessory list in #5 above). **NO KITS.**

Level D (10th - 12th Grade)

Exhibit an ensemble of three or more articles (including decorated accessories).

NO KITS. Hair accessories and jewelry are included only if part of an ensemble.

You may use an original design or variation of a pattern or patterns. You may use specialty threads or embellishments. Use your imagination!

Latch Hook

1. See General Guidelines.
2. The article you exhibit must be finished and ready to use (i.e. wall hangings must be ready to hang with rod, hanging wire, etc., rugs must be bound **AND** backed with latex adhesive, pillows must be finished, etc.). Keep in mind that shaped articles are more difficult than square ones.
3. Members may use rug patterns, kits, or develop their own original design. If you are using your own original design, start with a blank canvas and create or develop a design. A design can be taken from another picture by tracing onto tracing paper. A proportion can then be created by using grids to fit your article size. The original drawing or picture should accompany the finished latch hook article.

LEVEL A (grades 3 & 4)

Exhibit one item up to 225 square inches. * Members may use rug patterns or kits. No original designs are necessary in this division.

LEVEL B (grades 5 & 6)

Exhibit one item over 225 square inches and up to 576 square inches. * Members may use rug patterns or kits. No original designs are necessary in this division.

LEVEL C (grades 7, 8, 9)

Exhibit one item 225 - 720 square inches. * Item may be of an irregular shape. Members may use rug patterns, kits, or develop their own original design. Hilo kits and designs are also acceptable.

LEVEL D (grades 10, 11, 12)

Exhibit one large article (over 576 square inches) or a set of articles. In this level it is the design, workmanship, etc. that counts, not the size. This level may include an exhibit of sets of articles, such as bath sets, etc.

* To find the size of your article in square inches, multiply the width of the design by the height of the design (i.e. $15 \times 15 = 225$ square inches; $18 \times 18 = 324$ square inches; $16 \times 20 = 320$ square inches; $24 \times 24 = 576$; $20 \times 36 = 720$ square inches; etc.).

Miscellaneous Crafts

If the project is to be judged on overall appearance, it should be exhibited as Decorated Wall Hanging. If the project is to be judged based on a specific technique or skill, it should be exhibited in Miscellaneous Crafts.

1. Exhibit any craft **NOT** listed in another project area. Crafts eligible for exhibition under listed categories, such as Decorated Wall Hanging, Fine Arts, Candles, Recycling, etc. must be exhibited in that category. Failure to meet a requirement of a project (i.e. no hanger for wall hanging) does not constitute being exhibited as Other Misc. Craft. Examples of Other Misc. Craft include items such as, but not limited to Leather Craft, Basket Weaving, Wooden Quilts, etc.
2. Examples of Miscellaneous Crafts are: woodcraft, macramé, leathercraft, metal art, nature craft, string art, origami, felt craft, quilling, stained glass, enamel craft, paper maché, glass etching, stenciling, paper snipping, basket weaving, tube painting, tole painting, plaster of Paris forms, etc. Projects completed on hand looms such as Knitting Knobby, Knifty Knitter, Knitting Jennie, etc., should be entered in this category and not in Other Needlecraft.
3. Articles should be ready to use (hanging articles need to be ready for hanging, etc.). **See Fine Arts: Exhibit Requirements #2, page 4, for hanging instructions.**

LEVEL A (grades 3 & 4)

Exhibit one article that shows the basic learning skills for the craft. **Framed puzzles may be exhibited in Level A only.**

LEVEL B, C, & D (grades 5 – 12)

Exhibit one article or set of articles that shows an improvement of skills and application of color and design.

