

2023 *Elkhart County 4-H Pocket Guide*



Purdue University is an affirmative action, equal access/equal opportunity institution.



Extension - Elkhart County

PURDUE UNIVERSITY COOPERATIVE EXTENSION SERVICE

Elkhart County

Elkhart County 4-H Fairgrounds
17746 County Road 34, Ste E
Goshen, IN 46528-6898

Cooperating with U.S. Department of Agriculture

Return Service Requested

NON-PROFIT ORG.
U.S. POSTAGE
PAID
PERMIT NO. 42
GOSHEN, INDIANA
46526

4-H Mission & Vision

4-H Mission: The Indiana 4-H Youth Development mission is to provide real-life educational opportunities that develop young people who positively impact their community and world.

4-H Vision: Indiana 4-H Youth Development mission strives to be the premier, community-based program empowering young people to reach their full potential.

4-H is unique because it is the only youth organization tied to the research base of our nation's land-grant university system. This connection allows Purdue Extension Staff and the volunteers they work with to receive training based on the most up-to-date research on youth development theory and practice.¹

In Indiana, 4-H can be found in all 92 counties as delivered through *Purdue Extension*. Purdue Extension is the outreach link between local communities, the land grant universities, and the United States Department of Agriculture (USDA). Since 1914, this educational system has assisted in the well-being and productivity of people throughout the United States.

Through life-changing 4-H programs, nearly six million kids and teens have taken on critical societal issues, such as addressing community health inequities, engaging in civil discourse and advocating for equity and inclusion for all. For more than 100 years, 4-H has welcomed young people of all beliefs and backgrounds, giving kids a voice to express who they are and how they make their lives and communities better.

4-H'ers are...

4X more likely to
give back to their
communities

2X more likely to
make healthier
choices

2X more likely to
participate in
STEM activities



Facebook: "Elkhart County 4-H"



Instagram: @ElkhartCounty4H

Elkhart County 4-H website:

www.extension.purdue.edu/elkhart

Purdue Cooperative Extension Service – Elkhart County
Office Hours: 8:00 a.m. to 4:30 p.m. Monday through Friday
Elkhart County 4-H Fairgrounds
17746 County Road 34 Ste E
Goshen, IN 46528-6898
574-533-0554

Sthele Greybar, Extension Educator – 4-H Youth Development
sgreybar@purdue.edu

Robert Kelly, Extension Educator – 4-H Youth Development
Agriculture and Natural Resources – Livestock
County Extension Director
Area 8 Fellow
kelly115@purdue.edu

Nancy Borkholder, ANR/4-H Secretary – Livestock nborkhol@purdue.edu

Susan Stine, Receptionist/4-H Secretary sstine@purdue.edu

Penny Conover, 4-H Secretary/Database Specialist pconove@purdue.edu

 **4-H GROWS HERE**

4-H Ribbons

State Fair (Purple)

This is the best overall exhibit in a division, section, or category and has been selected for exhibit at the Indiana State Fair.



Group B (Red)

Second place group. Project work is good but does not meet requirements in some way and/or is missing an important element.



Champion (Purple)

This is the best overall exhibit in a division, section, or category where a State Fair entry does not exist, and it is awarded when merited. Example: A champion ribbon is awarded to Microwave Cooking because it is a county project and not available on the state level.



Group C (White)

Third place group. Does not meet requirements and is missing two or more important elements.



Reserve Champion (Lavender)

This is the second best overall exhibit in a division, section, or category and is awarded when merited.



Participation (Green)

Given to a late entry project that arrives after judging is finished. All projects are to be checked in at the designated times.



Honor Group (Purple)

This ribbon is given to first place group recipients that have done an out-standing job. State Fair winners and Champions are selected from this group.



Mini 4-H (Blue)

Given to Mini 4-H youth in grades K – 2 that complete a project.



Group A (Blue)

First place group. Meets all requirements, and project work is very good.



Special Activity (Yellow)

Given for special activities participated in during the year, such as Performing Arts.



Emblem

The 4-H emblem is the four-leaf clover with the letter “H” on each leaf. The H's stand for head, heart, hands, and health. The 4-H emblem is legally protected and must be used correctly.

Colors

The 4-H colors are green and white.

Motto

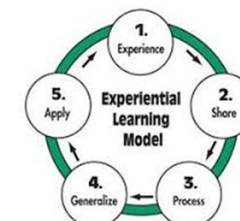
“To make the best better.”

4-H Pledge

I pledge,
My head to clearer thinking.
My heart to greater loyalty.
My hands to larger service, and
My health to better living.
For my club, my community,
my country, and my world.

Learning Model

Young people learn best when they are actively involved in the learning process, 4-H programs are designed to provide hands-on educational experiences that are reinforced through personal and group reflection and application “do-reflect-apply.” This is “Experiential Learning.”



Ribbons and judges' comments are available to be picked up during the fair in the ECCC (4-H Exhibit Building) kitchen during building hours.

Schedule

Below are some events that take place throughout the year (September-August):

September <ul style="list-style-type: none"> Project Changes Volunteer Training Update Materials 	October <ul style="list-style-type: none"> Enrollment Opens National 4-H Week Leader Banquet 	November <ul style="list-style-type: none"> Career Readiness Workshops Hacienda Gives Back Day 1 Youth Leadership Summit
December <ul style="list-style-type: none"> Officer's Training Performing Arts Contest Junior Leaders Begins 	January <ul style="list-style-type: none"> Scholarships Due Trip Applications Due Mini 4-H Welcome Event 	February <ul style="list-style-type: none"> Camp Counselor Training Youth Workshops Volunteer Week
March <ul style="list-style-type: none"> College Exploration 	April <ul style="list-style-type: none"> May 15 – Drop/Add Deadline Geranium Fundraiser 	May <ul style="list-style-type: none"> Mini 4-H Day Camp Hacienda Gives Back Day 2
June <ul style="list-style-type: none"> 4-H Camp 4-H Academy 4-H Round Up State Junior Leader Conference 	July <ul style="list-style-type: none"> Elkhart County 4-H Fair Fashion Revue 	August <ul style="list-style-type: none"> Indiana State Fair



Mini 4-H

Mini 4-H is a program for any child who is in Kindergarten, first, or second grade. Mini 4-Hers are not required to attend meetings but are encouraged to attend the special activities planned for them. There is no competition in the Mini 4-H program. There are 13 Mini 4-H projects. Mini 4-H'ers select one project to complete each year.

Mini 4-H Projects:

Arts & Crafts
Bicycle
Collections
Cake Decorating
Dinosaurs
Farm Animals
Flowers & Garden

Foods
Models
Nature (Bugs, Forestry, Wildlife)
Pets
Sewing
Tractor

Traditional 4-H Projects:

Aerospace
Arts & Crafts
ATV Safety
Auto Mechanics
Beef
Beekeeping
Bicycle
Blacksmithing
Cake Decorating
Cat
Child Development
Collections
Computer
Consumer Clothing
Dairy
Dog
Electric
Entomology
Fashion Revue
Floriculture
Foods
Forestry
Garden
Genealogy
Geology

Goat
Health
Home Environment
Horse and Pony
Junior Leaders
Lawn/Garden Tractor Operator Skills
Media
Performing Arts
Photography
Poultry
Rabbit
Remote Control
Sewing
Sheep
Shooting Sports
Soil and Water Science
Sportfishing
Sports
Swine
Tractor Operator Skills
Veterinary Science
Weather and Climate Science
Wildlife
Woodworking

Frequently Asked Questions (FAQ)

Who can participate in 4-H?

Traditional 4-H is for those that are in 3rd through 12th grade. Mini 4-H is a noncompetitive version of 4-H for those in K, 1st and 2nd grades.

How many projects can I do?

Traditional 4-H has no limit on the number of projects that you can participate in each year. We encourage youth to take a number they are comfortable with and can complete within the year.

How do I know what projects I can take?

See our website: [4-H Projects](#), 4-H Handbook, or contact the Purdue Extension Office to know what is available.

Are there any other fees associated with 4-H?

Project Supplies, Trips and some 4-H Activities will require additional fees.

Can I add or drop projects?

Yes! You may add or drop projects up until May 15th! You may simply do so on 4-HOnline, or call the Extension Office at 574-533-0554.

How do I contact someone if I have questions?

You are more than welcome to contact the Extension Office at 574-533-0554 or elkhartces@purdue.edu. Club leaders are also a great resource!

How do I enroll?

Log in to <https://v2.4honline.com> to enroll! If you would like additional help, prefer a paper copy or would like the use of a computer, visit us at the Extension Office M-F 8AM-4:30PM.

What is a club? When do they meet?

A club is a group of kids that meet together to answer questions, conduct business, and learn new skills. Meeting times vary. Please see our website for more information: [4-H Clubs](#)



4-H Clubs

4-H clubs are groups of youth and adults who meet on a regular basis and together practice positive youth development and cooperative learning. Clubs traditionally meet once a month. Some clubs meet year-round, some start meeting in the winter. Each club elects officers from the club membership. The officers conduct the business portion of the club meeting.

4-Hers may belong to any 4-H Club in the county. Residence does not restrict club membership. All Clubs should strive to create a quality learning environment for youth that give members a chance to be an active part of the club, to enhance life skills, and to promote positive youth development throughout all activities. All clubs also participate in community service projects throughout the year.

In Elkhart County, we have two main types of 4-H Clubs:

General

General clubs cover a broad range of topics within the 4-H Program

Subject-Specific

Subject-Specific clubs focus more on a specific subject area. Beef Club, Shooting Sports, and Auto Mechanics are all examples.

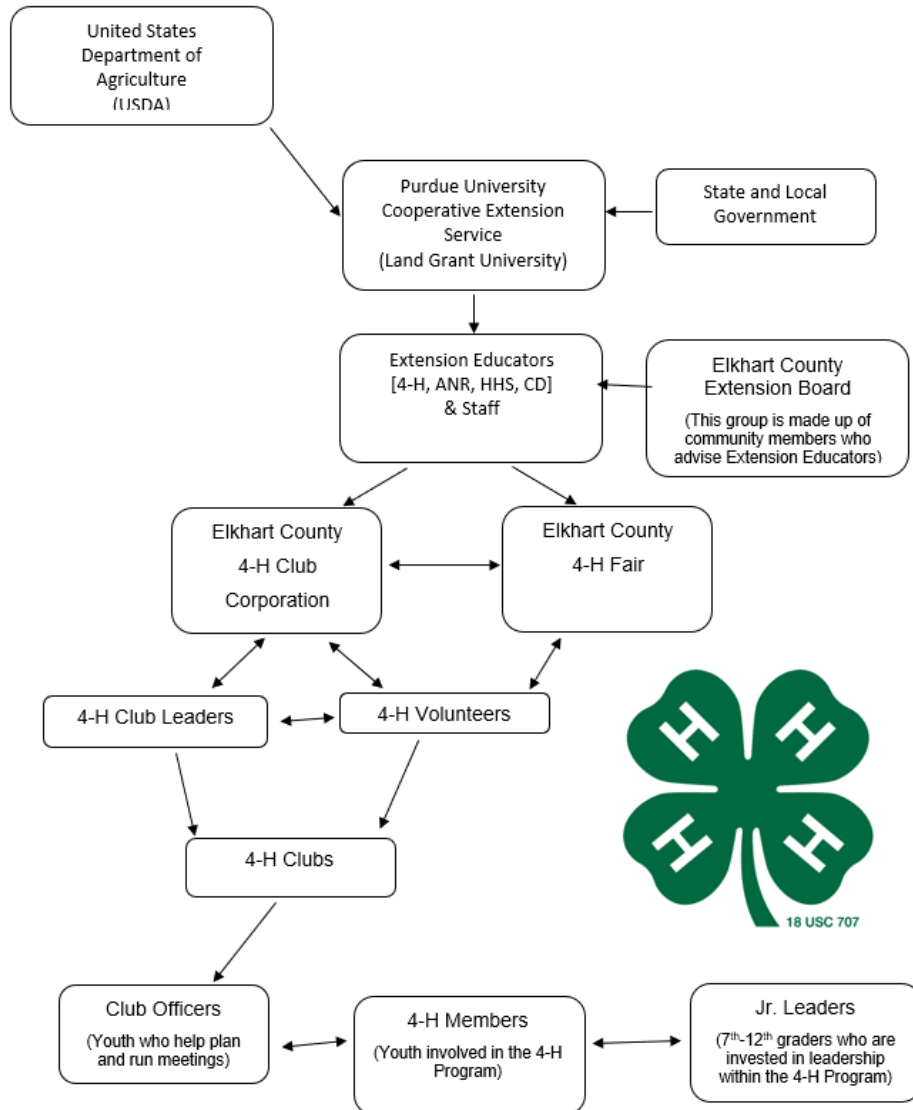
Youth may participate in many clubs depending on their interests. It is recommended that if a youth is involved in a project where a related club exists, that they be involved with that club as well since many of those club meetings will help the youth understand that topic. Other things to consider when selecting a club: location, dates of meetings, size of club you are comfortable with, and areas of interest.

4-H Friday Nugget

The 4-H Friday Nugget is sent electronically twice each month, usually the first and third Friday. You may access it via your email, on our website, or by requesting a hard copy at the Extension Office. Please read the 4-H Nugget carefully and keep it handy to know about 4-H news! It can also be found on the Elkhart County Extension Website: [4-H Information](#)



4-H Family Tree



4-H Parent/Guardian Information

Time Commitment:

One 4-H year includes about 1 - 2 hours per month for club meetings and whatever time you choose each week for 4-H project work. You will have a better experience if you put more time into your project!

Cost:

The State Program Fee for 4-H is \$15 per member for members in 3rd-12th grade. There is a \$45 cap on State Program Fees. So, if you have four or more 4-H members in your family, you will only pay the \$45 fee.

Responsibilities:

Help your child enroll in the 4-H club and meet the 4-H requirements.

Help your child select one or more suitable 4-H projects to complete.

Make sure your child attends the 4-H club meetings.

Provide or arrange for transportation.

Help your child to complete any 4-H responsibilities for which he/she has volunteered.

Help with at least one 4-H club activity during the 4-H year.

Support your child's 4-H project work.

