

# 2022

## *Elkhart County 4-H*

### *Pocket Guide*



## 4-H Mission & Vision

**4-H Mission:** The Indiana 4-H Youth Development mission is to provide real-life educational opportunities that develop young people who positively impact their community and world.

**4-H Vision:** Indiana 4-H Youth Development mission strives to be the premier, community-based program empowering young people to reach their full potential.

4-H is unique because it is the only youth organization tied to the research base of our nation's land-grant university system. This connection allows Purdue Extension Staff and the volunteers they work with to receive training based on the most up-to-date research on youth development theory and practice.

In Indiana, 4-H can be found in all 92 counties as delivered through *Purdue Extension*. Purdue Extension is the outreach link between local communities, the land grant universities, and the United States Department of Agriculture (USDA). Since 1914, this educational system has assisted in the well-being and productivity of people throughout the United States.

Through life-changing 4-H programs, nearly six million kids and teens have taken on critical societal issues, such as addressing community health inequities, engaging in civil discourse and advocating for equity and inclusion for all. For more than 100 years, 4-H has welcomed young people of all beliefs and backgrounds, giving kids a voice to express who they are and how they make their lives and communities better.

### 4-H'ers are...

**4X** more likely to give back to their communities

**2X** more likely to make healthier choices

**2X** more likely to participate in STEM activities



### **Emblem**

The 4-H emblem is the four-leaf clover with the letter “H” on each leaf. The H's stand for head, heart, hands, and health. The 4-H emblem is legally protected and must be used correctly. Youth members are called “4-H’ers”.

### **Colors**

The 4-H colors are green and white.

### **Motto**

“To make the best better.”

### **4-H Pledge**

I pledge,  
My head to clearer thinking.  
My heart to greater loyalty.  
My hands to larger service, and  
My health to better living.  
For my club, my community,  
my country, and my world.

### **Learning Model**

Young people learn best when they are actively involved in the learning process, 4-H programs are designed to provide hands-on educational experiences that are reinforced through personal and group reflection and application “do-reflect-apply.” This is “Experiential Learning.”



Pfeiffer, J.W., & Jones, J.E., "Reference Guide to Handbooks and Annals"  
© 1963 John Wiley & Sons, Inc.  
Reprinted with permission of John Wiley & Sons, Inc.

# Tentative Schedule

Below are some events that take place throughout the year (September-August):

<b>September</b> <ul style="list-style-type: none"> <li>• Project Changes</li> <li>• Volunteer Training</li> <li>• Update Materials</li> </ul>	<b>October</b> <ul style="list-style-type: none"> <li>• Enrollment Opens</li> <li>• National 4-H Week</li> <li>• Leader Banquet</li> </ul>	<b>November</b> <ul style="list-style-type: none"> <li>• Career Readiness Workshops</li> <li>• Hacienda Gives Back Day 1</li> <li>• Youth Leadership Summit</li> </ul>
<b>December</b> <ul style="list-style-type: none"> <li>• Officer's Training</li> <li>• Performing Arts Contest</li> <li>• Junior Leaders Begins</li> </ul>	<b>January</b> <ul style="list-style-type: none"> <li>• Scholarships Due</li> <li>• Trip Applications Due</li> <li>• Mini 4-H Welcome Event</li> </ul>	<b>February</b> <ul style="list-style-type: none"> <li>• Camp Counselor Training</li> <li>• Youth Workshops</li> <li>• Volunteer Week</li> </ul>
<b>March</b> <ul style="list-style-type: none"> <li>• College Exploration</li> <li>•</li> </ul>	<b>April</b> <ul style="list-style-type: none"> <li>• May 15 – Drop/Add Deadline</li> <li>• Geranium Fundraiser</li> </ul>	<b>May</b> <ul style="list-style-type: none"> <li>• Mini 4-H Day Camp</li> <li>• Hacienda Gives Back Day 2</li> </ul>
<b>June</b> <ul style="list-style-type: none"> <li>• 4-H Camp</li> <li>• 4-H Academy</li> <li>• 4-H Round Up</li> <li>• State Junior Leader Conference</li> </ul>	<b>July</b> <ul style="list-style-type: none"> <li>• Elkhart County 4-H Fair</li> <li>• Livestock Auction</li> <li>• Fashion Revue</li> </ul>	<b>August</b> <ul style="list-style-type: none"> <li>• Indiana State Fair</li> </ul>



## 4-H Clubs

4-H clubs are groups of youth and adults who meet on a regular basis and together practice positive youth development and cooperative learning. Clubs traditionally meet once a month. Some clubs meet year-round, some start meeting in the winter. Each club elects youth officers from the club membership. The officers conduct the business portion of the club meeting.

Youth may belong to any 4-H Club in the county. Residence does not restrict club membership. All Clubs should strive to create a quality learning environment for youth that give members a chance to be an active part of the club, to enhance life skills, and to promote positive youth development throughout all activities. All clubs also participate in community service projects throughout the year.

In Elkhart County, we have two main types of 4-H Clubs:

**General**                      General clubs cover a broad range of topics within the 4-H Program

**Subject-Specific**        Subject-Specific clubs focus more on a specific subject area. Beef Club, Shooting Sports, and Auto Mechanics are all examples.

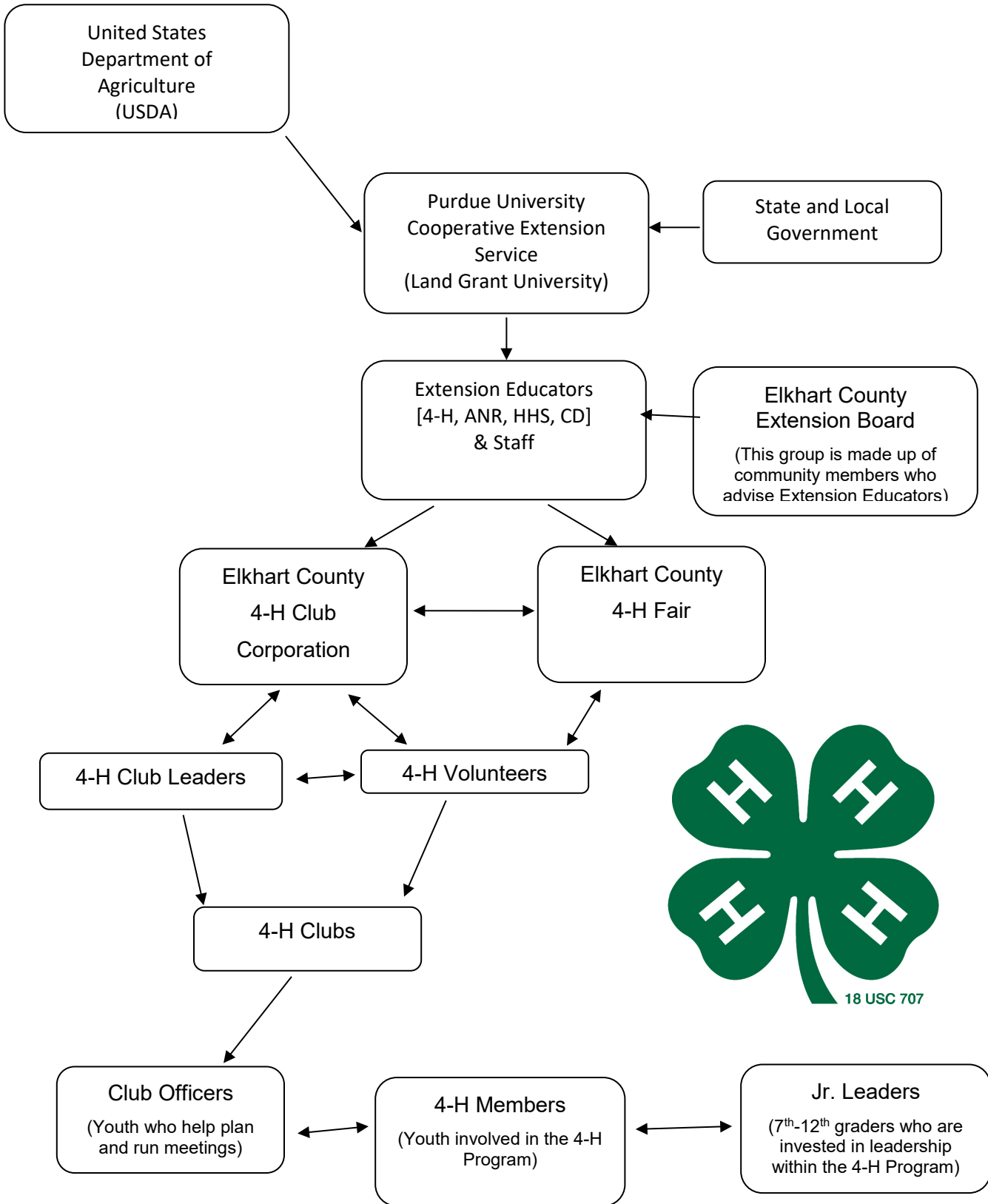
Youth may participate in many clubs depending on their interests. It is recommended that if a youth is involved in a project where a related club exists, that they be involved with that club as well since many of those club meetings will help the youth understand that topic. Other things to consider when selecting a club: location, friends, dates of meetings, size of club you are comfortable with, and areas of interest.

## 4-H Friday Nugget

The 4-H Friday Nugget is sent electronically twice each month, usually the first and third Friday. You may access it via your email, on our website, or by requesting a hard copy at the Extension Office. Please read the 4-H Nugget carefully and keep it handy to stay informed about 4-H news! It can also be found on the Elkhart County Extension Website: [4-H Information](#)



# 4-H Family Tree



## 4-H Parent/Guardian Information

### Time Commitment:

One 4-H year includes about 1 - 2 hours per month for club meetings and whatever time you choose each week for 4-H project work. You will have a better experience if you put more time into your project!

### Cost:

The State Program Fee for 4-H is \$15 per year, per member, for youth in 3<sup>rd</sup>-12<sup>th</sup> grade. There is a \$45 cap on State Program Fees. So, if you have 4 or more 4-H members in your family, you will only pay the \$45 fee.

### Responsibilities:

- Help your child enroll in the 4-H club and meet the 4-H requirements.
- Help your child select one or more suitable 4-H projects to complete.
- Make sure your child attends the 4-H club meetings.
- Provide or arrange for transportation.
- Help your child to complete any 4-H responsibilities for which he/she has volunteered.
- Help with at least one 4-H club activity during the 4-H year.
- Support your child's 4-H project work.



# Frequently Asked Questions (FAQ)

1. Who can participate in 4-H?
  - a. Traditional 4-H is for those that are in 3<sup>rd</sup> through 12<sup>th</sup> grade. Mini 4-H is a sample of 4-H for those in K, 1<sup>st</sup> and 2<sup>nd</sup> grades.
2. How many projects can I do?
  - a. Traditional 4-H has no limit on the number of projects that you can participate in each year. We encourage youth to take a number they are comfortable with and can complete within the year.
3. How do I know what projects I can take?
  - a. See our website: [4-H Projects](#), 4-H Handbook, or contact the Purdue Extension Office to know what is available.
4. Are there any other fees associated with 4-H?
  - a. Project Supplies, Trips and some 4-H Activities will require additional fees. Poster supplies may be purchased from the Extension Office.
5. Can I add or drop projects?
  - a. Yes! You may add or drop projects up until May 15<sup>th</sup>! You may simply do so on 4-HOnline, or call the Extension Office at 574-533-0554.
6. How do I contact someone if I have questions?
  - a. You are more than welcome to contact the Extension Office at 574-533-0554 or [elkhaces@purdue.edu](mailto:elkhaces@purdue.edu). Club leaders are also a great resource!
7. How do I enroll?
  - a. Log in to <https://v2.4honline.com> to enroll! If you would like additional help, prefer a paper copy or would like the use of a computer, visit us at the Extension Office M-F 8AM-4:30PM.
8. What is a club? When do they meet?
  - a. A club is a group of kids that meet together to answer questions, conduct business, and learn new skills. Meeting times vary. Please see our website for more information: [4-H Clubs](#)



FAQs



## Mini 4-H

Mini 4-H is a program for any child who is in Kindergarten, first, or second grade. Mini 4-Hers are not required to attend meetings but are encouraged to attend the special activities planned for them. There is no competition in the Mini 4-H program. There are 13 Mini 4-H projects. Mini 4-H'ers select one project to complete each year.

### Mini 4-H Projects:

Arts & Crafts  
Bicycle  
Collections  
Cookie Decorating  
Dinosaurs  
Farm Animals

Flowers & Garden  
Foods  
Models  
Nature (Bugs, Forestry, Wildlife)  
Pets  
Sewing  
Tractor

### Traditional 4-H Projects:

Aerospace  
Arts & Crafts  
ATV Safety  
Beef  
Beekeeping  
Bicycle  
Cake Decorating  
Cat  
Child Development  
Computer  
Consumer Clothing  
Dairy  
Dog  
Electric  
Entomology  
Floriculture  
Foods  
Forestry  
Garden  
Genealogy

Geology  
Goat  
Health  
Home Environment  
Horse and Pony  
Photography  
Poultry  
Rabbit  
Sewing  
Sheep  
Shooting Sports  
Soil and Water Science  
Sportfishing  
Sports  
Swine  
Tractor  
Veterinary Science  
Weather and Climate Science  
Wildlife  
Woodworking



# 4-H GROWS HERE

# 4-H Ribbons

## State Fair (Purple)

This is the best overall exhibit in a division, section, or category and has been selected for exhibit at the Indiana State Fair.



## Group B (Red)

Second place group. Project work is good but does not meet requirements in some way and/or is missing an important element.



## Champion (Purple)

This is the best overall exhibit in a division, section, or category where a State Fair entry does not exist, and it is awarded when merited. Example: A champion ribbon is awarded to Microwave Cooking because it is a county project and not available on the state level.



## Group C (White)

Third place group. Does not meet requirements and is missing two or more important elements.



## Reserve Champion (Lavender)

This is the second best overall exhibit in a division, section, or category and is awarded when merited.



## Participation (Green)

Given to a late entry project that arrives after judging is finished. All projects are to be checked in at the designated times.



## Honor Group (Purple)

This ribbon is given to first place group recipients that have done an out-standing job. State Fair winners and Champions are selected from this group.



## Mini 4-H (Blue)

Given to Mini 4-H youth in grades K – 2 that complete a project.



## Group A (Blue)

First place group. Meets all requirements, and project work is very good.



## Special Activity (Yellow)

Given for special activities participated in during the year, such as Performing Arts.



*Ribbons and judges' comments are available to be picked up during the fair in the ECCC (4-H Exhibit Building) kitchen during building hours.*



Facebook: "Elkhart County 4-H"



Instagram: @ElkhartCounty4H

Elkhart County 4-H website: [www.extension.purdue.edu/elkhart](http://www.extension.purdue.edu/elkhart)

Purdue Cooperative Extension Service – Elkhart County  
Office Hours: 8:00 a.m. to 4:30 p.m. Monday through Friday  
Elkhart County 4-H Fairgrounds  
17746 County Road 34 Ste E  
Goshen, IN 46528-6898  
574-533-0554

Sthele Greybar, Extension Educator – 4-H Youth Development  
[sgreybar@purdue.edu](mailto:sgreybar@purdue.edu)

Robert Kelly, Extension Educator – 4-H Youth Development  
Agriculture and Natural Resources – Livestock  
County Extension Director  
[kelly115@purdue.edu](mailto:kelly115@purdue.edu)

Anna Balas, Extension Educator – 4-H Youth Development  
[abalas@purdue.edu](mailto:abalas@purdue.edu)

Nancy Borkholder, ANR/4-H Secretary – Livestock  
[nborkhol@purdue.edu](mailto:nborkhol@purdue.edu)

Susan Stine, Receptionist/4-H Secretary  
[sstine@purdue.edu](mailto:sstine@purdue.edu)

Penny Conover, 4-H Secretary – Youth  
[pconove@purdue.edu](mailto:pconove@purdue.edu)