

Newsletter

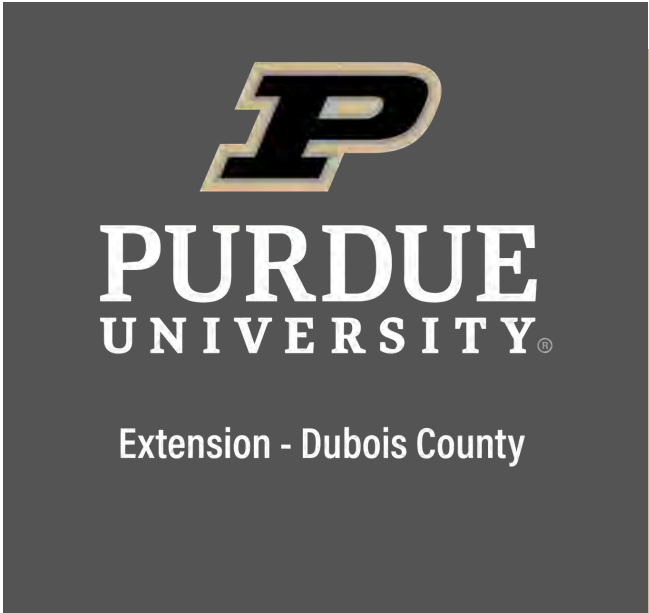
October 2023

IN THIS ISSUE

HHS (Health and Human Sciences) - Programing survey / Food Perseveration workshop / Parents Forever Classes / Canning Tips. **Pages 2-5**

ANR (Agriculture and Natural Resources) - Farmland rent- sell pricing/ DNR tree orders and info/ Bale grazing workshop. **Pages 6-9**

Youth Development (4-H) - 4-H Kickoff, Important updates / fall break camps/ Upcoming Events. **Pages 10-13**



Office News

Thank you to everyone who came to the Local Foods Expo!

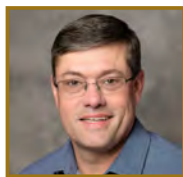


We have Moved
**The Purdue Extension
Dubois County Office
is now at the Center
on Fifth.
505 West 5th Street
Jasper IN 47546**

Community Educators



Chelsea Brewer
County Extension
Director; HHS Educator



Kenneth Eck
Agriculture and Natural
Resources
ANR Educator



Lauren Fenneman
4-H -Youth
Development
Educator



<https://extension.purdue.edu/county/dubois>



Chelsea Brewer
County Extension Director;
Extension Educator - HHS
cebrewer@purdue.edu

HHS

**Health and
Human
Sciences**



Money

Food and Nutrition

Family

Healthy Communities

How Can HHS Help You?

I created a quick survey to gather input about future programs that people would enjoy seeing. Please follow this link.



bit.ly/HHSsurvey23

If you're seeking a presenter for your group or organization in regards to food, nutrition or other wellness topics, reach out. Chances are we can help!

Contact

Chelsea Brewer
County Extension Director; Extension Educator - HHS
cebrewer@purdue.edu / 812-482-1782

Purdue Fast Start Program

INDIANA STUDENTS CAN EARN

FREE

**ASSURED
ADMISSION**

PURDUE
FAST START PROGRAM

Giving Indiana students a new pathway to Purdue through:

- Free courses
- Assured admission
- Purdue credit
- Big savings

Check it out today!

<https://www.admissions.purdue.edu/purduefaststart/>

Mastering Home Food Preservation

Petersburg Community Church
420 E Illinois St.
Petersburg, IN 47567



Training

Oct 31-Nov 3, 2023
9 AM – 5 PM ET

Online Registration

cvent.me/K5Qx1l

Valuable Resources, In-depth Lectures, Interactive Discussions,
Hands-on Practice, Take Home Products

USDA Home Food Preservation recommended procedures are taught.
Instructors will provide instructional course work and preservation labs.

TOPICS COVERED

Food Safety and Freezing Food
Boiling Water Canning
Pressure Canning
Pickling, Drying Foods
Jams and Jellies

REGISTER EARLY!

Cost: \$275.00

Mastering Home Food Preservation
Notebook Included.

Contact: Abbi Smith,
asmith22@purdue.edu, (765) 653-8411 for
additional details.



Extension - Health and
Human Sciences

FOOD PRESERVATION

PARENTS FOREVER

HHS
Health and
Human
Sciences

Going through a family transition or not, all parents can benefit from Parents Forever. Co-parenting requires thoughtful skill-building, learning how to have hard conversations, and knowing what to expect at every stage. These are all things that parents can expect to learn during a Parents Forever class. Plus, having more knowledge is never a bad thing.

About Parents Forever

Education to aid families in transition after divorce, separation, or custody change

Families face many challenges and sometimes have to deal with transitions. Parents Forever © is an educational program for families experiencing divorce, separation, or a change in child custody. It was developed by the University of Minnesota Extension's Center for Family Development and adopted for use by Purdue Extension for Indiana residents.



Financial
assistance may be
available

By completing a Parents Forever course, participants

learn to:

- Describe the family transition journey and how each family member will be affected.
- Recognize the role of self-care, parent-child relationships, and co-parenting in child well-being.
- Identify internal and external resources and strategize how to leverage these resources to promote resilience for all involved.

****This course is appropriate for adults only. Please make childcare arrangements.**

Parents Forever upcoming dates (Dubois County only):



October 10th 9:30-1:30 pm EST

**to register,
visit bit.ly/ParentsForeverIN
or scan the QR code**

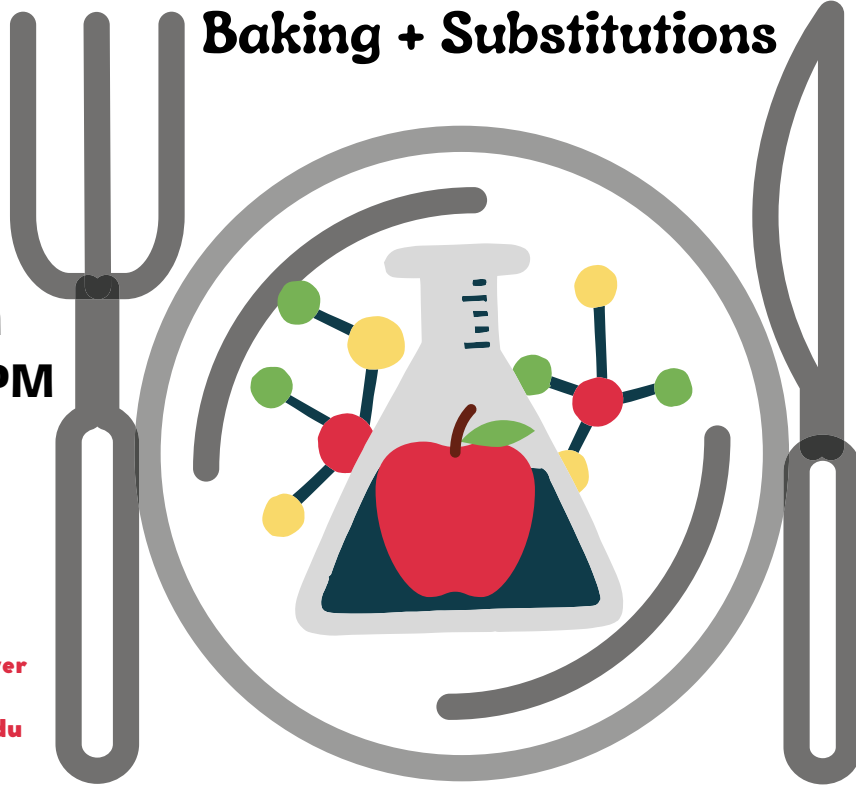


Food Science

Baking + Substitutions

Nov 29th
6:00-7:00PM

Question?
Contact Chelsea Brewer
812-482-1782
cebrewer@purdue.edu



**Center on Fifth
Training Room**
505 W 5th St
Door #4,
Jasper IN



Register @ [Bit.ly/baking-subs](https://bit.ly/baking-subs)

Finding Balance

Mindfulness Training for Adults

November 15th

6:00-7:30PM

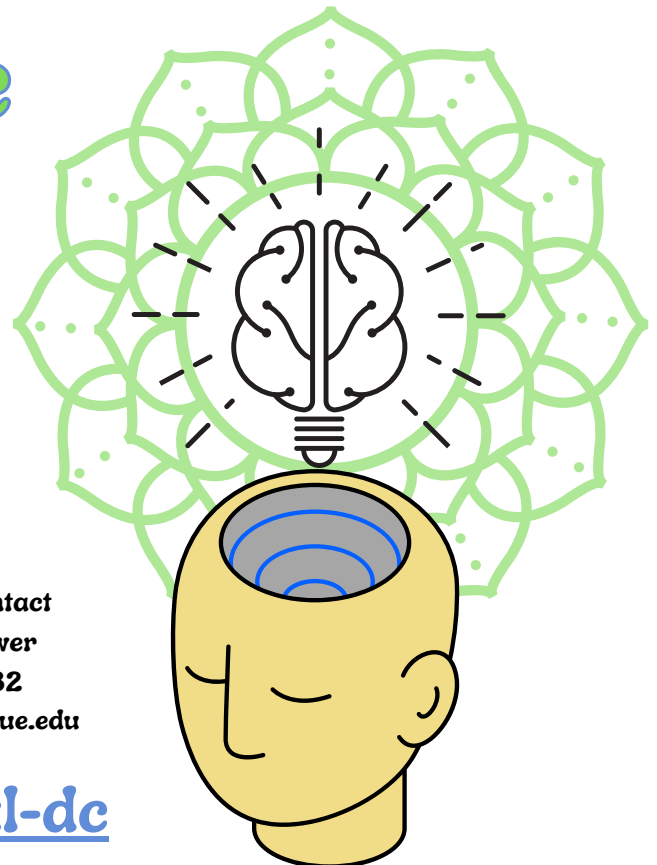
Center on Fifth Training Room

505 W 5th St Door #4
Jasper, IN



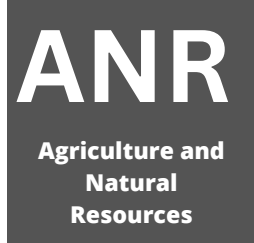
Question? Contact
Chelsea Brewer
812-482-1782
cebrewer@purdue.edu

Register @ [Bit.ly/mindful-dc](https://bit.ly/mindful-dc)





Kenneth Eck
Extension Educator - ANR
kjeck@purdue.edu



Agriculture and Natural Resource Extension (ANR) Educators serve as research based, unbiased information source for county and state constituents on a variety of topics including: crops, ag business, livestock, natural resource, horticulture, small farms, urban ag, pesticide use, and land conservation. In partnership with Purdue University subject matter experts, ANR Extension Educators can provide relevant and proven best management practices to address many clients' situational needs.

Estimated Farmland Sale & Cash Rent Values - 2023

Below are summaries of survey results from participants around Indiana polled on average Indiana land sale and rent rates.

Average estimated Indiana land value and cash rent per acre (tillable, bare land) 2022 and 2023, Purdue Land Value Survey, June 2023.

Area	Land Class	Corn bu./A	Land Value (\$)			Rent Value (\$)		
			June 2022 S/A	June 2023 S/A	% Change	June 2022 S/A	June 2023 S/A	% Change
Southwest*	<i>Top</i>	227	13,825	12,857	(-7.0%)	309	296	(-4.07%)
	<i>Average</i>	193	10,222	9,450	(-7.6%)	244	239	(-2.22%)
	<i>Poor</i>	160	8,022	7,182	(-10.5%)	194	173	(-10.71%)
Indiana	<i>Top</i>	221	12,808	13,739	7.3%	300	306	1.99%
	<i>Average</i>	193	10,598	11,210	5.8%	252	257	2.09%
	<i>Poor</i>	165	8,631	8,689	0.7%	207	212	2.50%

**Southwest Indiana is comprised of Clay, Daviess, Dubois, Gibson, Greene, Knox, Martin, Owen, Pike, Posey, Spencer, Sullivan, Vanderburgh, Vigo and Warrick counties.*

Full Purdue Agricultural Economics Report available at:

<https://ag.purdue.edu/commercialag/home/paer-publication/indiana-farmland-prices-continue-to-rise-in-2023>



IDNR Tree Orders and Information

The IDNR - Division of Forestry has released order forms for bulk seedlings for the 2023 spring season. Order forms are available either on-line or through the Purdue Extension office, with seedlings being available for spring pick-up.

Orders will be taken beginning October 2, 2023 through May 1, 2024, with trees available as long as supplies are available from the DNR Vallonia Tree Nursery.

To order trees you can contact the Vallonia Nursery directly at ph.(812)358-3621, or order on-line after October 2nd at:

www.INForestryX.com

For contact information on local DNR Foresters, visit their website at:

<https://www.in.gov/dnr/forestry/private-forestland-management/district-foresters/>



FALL GARDEN CALENDAR

Flowers, Vegetables, and Small Fruits

October

- Harvest root crops and store in a cold (32°F), humid location. Storing produce in perforated plastic bags is a convenient and easy way to increase humidity.
- Harvest brussels sprouts as they develop in the axils of the leaves from the bottom of the stem. Brussels sprouts will continue to develop up the stem.
- Harvest pumpkins and winter squash when ripened and fully colored but before frost. Store in a cool location until ready to use.
- Harvest gourds when stems begin to brown and dry. Cure at 70 to 80°F for two to four weeks.
- Asparagus top growth should not be removed until foliage yellows. Let foliage stand over the winter to collect snow for insulation and moisture.
- Remove plant debris from the garden to protect next year's planting from insect and disease build-up. compost plant refuse by alternating layers of soil, plant material, and manure or commercial fertilizer.
- Carve a Halloween jack-o'-lantern.
- Complete planting of spring-flowering bulbs.
- Strawberry plants need protection from winter's extremes, but applying winter mulch too early may cause crowns to rot. Wait until later in November.

November

- Have garden soil tested for fertilizer needs every three to five years.
- Fall tilling, except in erosion-prone areas, helps improve soil structure and usually leads to soils warming up and drying faster in the spring, thus allowing crops to be planted earlier.
- Apply winter mulch to strawberries when plants are dormant but before temperatures drop below 20°F, usually in late November or early December.

Indoor Plants and Activities

October

- Pot-up spring-flowering bulbs with tips exposed, to force into bloom indoors. Moisten soil and refrigerate 10 to 13 weeks. Transfer to a cool, sunny location, and allow an additional three to four weeks for blooming.
- Water indoor plants less frequently, and discontinue fertilizer as plants slow down or stop growing for the winter season.

November

- Move plants closer to windows or to sunnier exposures, such as west and south facing windows, if plants are dropping many leaves. Artificial lights may be needed to supplement particularly dark rooms.
- Continue dark treatment for poinsettias by keeping them in complete darkness from 5 p.m. to 8 a.m. until early December, or until red bracts begin to show.

Lawns, Tree Fruits, Landscape Plants, and Woody Ornamentals

October

- Keep plants, especially newly planted stock, well-watered until the ground freezes.
- Have soil ready for mounding roses for winter protection. Do not mound or cover the roses until after leaves drop and soil is near freezing, usually in late November or early December.

November

- Prevent rabbit and rodent feeding damage by erecting physical barriers, such as metal mesh (1/4") hardware cloth. Pull mulch away from the trunk a few inches because the mulch provides a warm winter home for rodents. Chemical repellents are also available, but their effectiveness is temporary and not fool proof.
- Prevent frost cracking (or sunscald) by wrapping trunks with commercial tree wrap or painting the south and southwest facing sides of the trunk with white latex outdoor paint. Young, thin-barked trees such as maples and many fruit trees are especially susceptible.
- Remove dead, diseased, or damaged branches.
- Protect the graft union on rose bushes by mounding soil up 12 inches around the plants and adding mulch on top. Wait until after several killing frosts have occurred so that plants will be dormant when covered. Plants covered too early may be smothered.
- If you are planning to order a "live" Christmas tree, prepare its planting hole before the soil freezes. Mulch the area heavily to prevent freezing, or dig the hole and put the fill in a protected, nonfreezing area, such as a garage or basement.

BALE GRAZING

Livestock folks: Bale Grazing can help you keep your animals on pasture for more of the year; deal with drought; and renovate your pastures. Attend one or both:

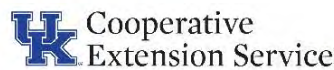


- October 5th, 10am-3pm - Madison, IN.
Meet at Jefferson County fairgrounds.
- October 6th, 10am-3pm - Dubois, IN.
Meet at SIPAC.

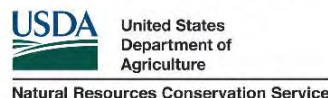
FREE WORKSHOP:

- How-to workshop with Greg Halich, Forage Systems Economist from University of Kentucky
- Insights from graziers who use bale grazing in southern Indiana
- Free lunch
- Pasture walk to see how graziers set up their bale grazing, and the results it can have for pastures and livestock

Brought to you by:



Extension



RSVP and details at www.indianafarming.org.

<https://extension.purdue.edu/county/dubois>

Calculating Lawn Fertilizer Needs

<https://www.extension.purdue.edu/extmedia/HO/HO-236-W.pdf>

When fertilizing your lawn it's important to apply the correct amount of product for plant, environmental and economical reasons!

In this example, it's May 1st and you want to fertilize your lawn. The Fertilizer Recommendations for Established Lawns table (Purdue "Taking Care of Your Yard", pg. 12) advises you to apply a fertilizer that is a slow-release nitrogen. You choose one with a 25-0-5 analysis.

Next, use the Fertilizer Worksheet (Purdue "Taking Care of Your Yard", pg. 14) to calculate the fertilizer your lawn needs.

Step 1. Determine the area of your lawn (in square feet).

Your house is on a 50-foot by 70-foot lot (see illustration above). Adding together the different areas, you determine your lawn is 3,125 square feet (total lot area minus area under house).

Step 2. Find the recommended nitrogen application rate.

Nitrogen application rates are provided in pounds per 1000 square feet. Use Fertilizer recommendations for Established lawns table. From May15-June 1, you should apply 1 pound of actual nitrogen per 1000 square feet for established lawns

Step 3. Divide the area of your lawn (step 1) by 1000 feet.

$$3125 / 1000 = 3.125$$

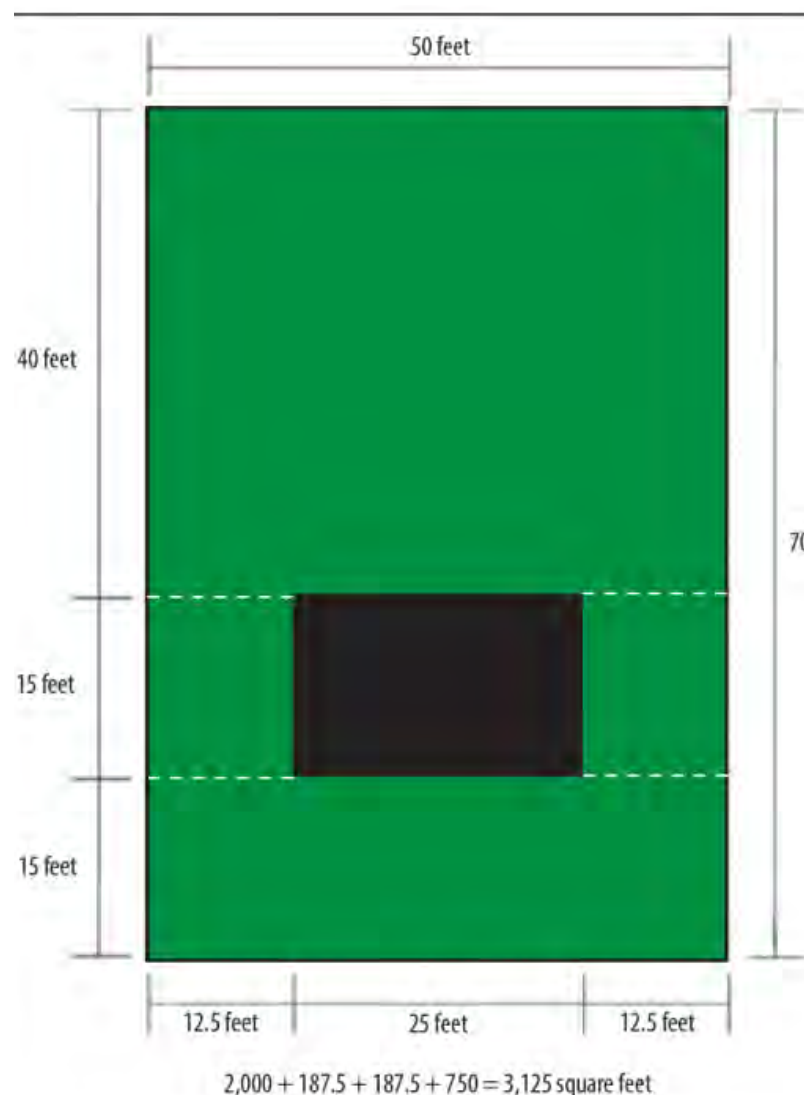
Step 4. Determine how many pounds of actual nitrogen your lawn needs.

Multiply the recommended application rate from Step 2 (1 pound) by the number from Step 3 (3.125).

$1 \times 3.125 = 3.125$ pounds of actual nitrogen needed for your entire lawn.

Step 5. Determine how much actual nitrogen is in each pound of your fertilizer.

First the number on the fertilizer bag is the percentage of nitrogen it contains. So, if you have a bag of 25-0-5 fertilizer, it is 25 percent nitrogen. so each pound of fertilizer contains 0.25 pound of actual nitrogen.



Step 6. Determine the total amount of fertilizer your lawn needs.

Finally, determine how much fertilizer your entire lawn needs. Take the actual nitrogen your lawn needs (3.125 pounds the number from step 4) and divide it by the actual nitrogen in each pound of fertilizer.



Lauren Fenneman
Extension Educator
4-H Youth Development
lhaase@purdue.edu

**Youth
Development**
4-H


4-H enrollment begins October 1st! Enroll today at v2.4honline.com to get the most out of your 4-H experience. Your 4-H experience is what you want to put into 4-H. Can't make it to all the club meetings? No problem. Do you just enjoy the workshops? Then just do the workshops. Please take the opportunity to come as you are and learn, grow, and develop skills that will last you a lifetime. Try something new, meet some new people, and maybe learn something about yourself through 4-H!

In other news, I am expecting! I am due November 18th and expecting a boy. This means I will be out on maternity leave from November until January. No worries the office staff are wonderful people and will be able to assist you on any 4-H questions you might have.

For 4-H Enrollment Questions - Diane Lechner

For Volunteer Application and Volunteer Questions -Angie Sanchez - Hostetter

4-H Online Event Questions - Diane and Angie

For 4-H Juntos - Marina Guerrero

Thank you,
Lauren Fenneman



2024 THEME – “GOLD MEDAL TRADITION”
(IN HONOR OF THE 2024 OLYMPICS)

2024 FAIR – JULY 15-19, 2024



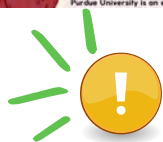
National 4-H Week October 1-7, 2023.

Wear green! Spread the word about 4-H!

Lauren will be out an about that week for school visits, Career Development Events and more. If you are spotted wearing a 4-H shirt, there might be a little 4-H gift for you!



4-H Kickoff Event – Join us on October 10th from 6-8 pm in the Clover Pavilion for some crafts and fall activities to Fall into 4-H. Need assistance with enrollment? We will be there with computers so that you can enroll that night. Celebrate fall with a pumpkin smoothie from the Fender Blender Bike, fall craft, solar eclipse activity and hotdogs, chips, and drinks provided by 4-H Council. Enjoy learning more about 4-H and some fun fall activities at the Fall into 4-H Kickoff Event



IMPORTANT UPDATES 2023-2024



How to pay your enrollment fee.

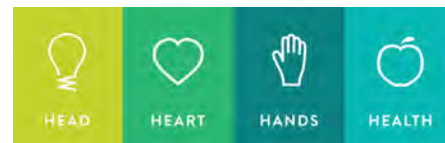
Please make checks payable to Purdue University. **WE HAVE MOVED.** Mail payment to PO Box 588, Jasper, IN 47547. To drop off payment please go to Center at 5th at 505 W 5th St. Jasper, IN 47546 and go to door number 4 in the back. You will buzz the doorbell and we will let you in and you will go upstairs. Questions? Call 812-482-1782.

May 15th - Animal Identification due in 4-H Online, v2.4honline.com. Any animals not entered in 4-H Online by this date is **NOT ALLOWED** to show at the 4-H fair. Mini 4-H animals will be able to enter in 4-H Online by member or older sibling.

July 1st - Proof of Completed Youth for the Quality Care of Animals or Indiana 4-H Quality Livestock Care Certificates due to be **eligible for animal shows** (Livestock animals. No quality care certificate needed for cat, dog, horses, llamas and alpacas, and small pets)

July 5th - FairEntry due to receive project labels and have a smooth check in.

4-H Family TO DOs October - December:



- Enroll and/or reenroll in 4-H at v2.4honline.com * Paid your \$15 program fee*
- Sign up for Project Area/Spark Clubs/4-H Experiences via 4-H Online
- Share 4-H Information or promotions from Purdue Extension - Dubois County social media pages
- Read communications from Purdue Extension Office: Keep an eye out for more information on the following: 4-H Camp, Scholarships, Trips, Fundraisers, State led 4-H experiences, Community Service Projects, Family Fun Events.
- Youth participate in 4-H events like club meetings, fall break events, livestock judging, junior leaders, etc.
- Share 4-H information with 1 parent from your kid's friends
- Gift a 4-H experience to a youth by paying their program fee

Fall Break



Youth in Grades 3-12 learn the basics about Disc Golf, learn some common techniques, play the 18-hole course at Dubois County Park, and leave with a new appreciation and understanding to play all the courses in the area.

Youth in grades 3-12 learn about UAV drones, how they are used, operate some drones, and learn from those in the area about careers involving drones.



Youth Grades K-2 join us for some fall fun and pumpkin up for 4-H! Enjoy crafts, games, and STEM activities related to pumpkins.

4-H Volunteer Corner



Save the Date for following trainings:

- October 18th – 6:30 pm, Clover Pavilion – Regular Adult Leader Meeting with updates
- October 21st – Indiana 4-H Leadership Summit – Carmel, IN
- November 8th – 6:30 pm, Center on 5th Training Room – 4-H Online and FairEntry, Website and more, Learn about the systems that make the program go

Activity –

Recreation– Upset the 4-H Barn. Each participant sits in a chair in a circle and counts off 1-4 or 5 (or more if you have a large group). Each set of numbers is labeled as a different animal. For example, the 1's might be cattle; 2's hogs; etc. One person stands in the middle and calls out the individual barn animal. The participants who have been assigned that animal must now get out of their original seat and find a new one. The person standing also tries to get a seat. The new person left without a seat now becomes the one who “upsets” the 4-H Barn. The whole 4-H barn may also be “upset” if the caller says “4-H Barn!”, everyone must then find a new seat.

Role Call – Name your favorite spooky character.

Community Service Idea – Make signs to local community buildings and sites of interest.

Upcoming Events

SERVE GROW THRIVE MAKE

Youth
Development
4-H


- **October 1-7th - National 4-H Week, Wear Green!**
- **October 10th - 4-H Kickoff Event, 6-8 pm, Clover Pavilion**
- October 17th - Fall Break Mini 4-H Camp, 9 am - 12 pm or 1-3 pm, Clover Pavilion
- October 18th - Adult Leader Meeting, 6:30 pm, Clover Pavilion
- October 19th - Disc Golf Discovery, 9 am - 3 pm, Clover Pavilion
- October 28th - UAV Drone Exploration, 9 am - 4 pm, Clover Pavilion
- November 6th - 4-H Council Meeting, 6:30 pm, Clover Pavilion Office
- November 8th - 4-H Volunteer Reenrollment Training, 5:30 - 6:30 pm, Center on 5th Training Room
- November 8th - Adult Leader Training, 6:30 - 8 pm, Center on 5th Training Room
- November 13th - 4-H Junior Leader Meeting, 7 pm, Agaves Mexican Restaurant
- December 11th - 4-H Junior Leader Meeting, 7 pm, Annex Fair Office
- February TBA - Indiana 4-H Day at the Statehouse, Grades 7-12, Indianapolis, IN
- March TBA - Beef Weigh In
- March 23rd - Dubois County Livestock Show Clinic, TBD, Dubois County 4-H Fairgrounds
- April TBA - Dubois County Performing Arts Event
- April 8th - 4-H Junior Leader Meeting, 7 pm, Dubois County Park
- May TBA - Sheep and Goat Identification, Sheep Barn
- **May 15th - Animal Identification due in 4-H Online, v2.4honline.com**
- June TBA - 4-H Camp Grades 3-8, Counselors 9-12, Country Lake Retreat Center
- June TBA - State Junior Leader Conference
- June TBA - Dubois County Tractor Operator Contest, Dubois County 4-H Fairgrounds
- June TBA - Hay Coring, Clover Pavilion
- June TBA - Area Tractor Operator Contest
- June 1st - 24th Enter 4-H Fair Exhibits in FairEntry at duboiscounty-indiana.fairentry.com
- June 12-14th - 4-H Academy Grades 9-12, Purdue University
- June 22-24th - 4-H Band, Purdue University
- June 22-25th - 4-H Chorus, Purdue University
- June 24th - FairEntry due to pick up Project Labels early
- June 24-26th - 4-H Round Up Grades 7-9, Purdue University
- June 27th - Project Label and Supply Pickup Night, CP 5-8 pm
- **July 1st - Proof of Completed Youth for the Quality Care of Animals or Indiana 4-H Quality Livestock Care Certificates due to be eligible for animal shows (Livestock animals. No certificate needed for cat, dog, horses, llamas and alpacas, and small pets)**
- **July 5th - FairEntry due to receive project labels and smooth check in.**
- July 8th - 4-H Junior Leader Exhibit Building Cleanup, 7 pm, Clover Pavilion
- July 9th - Project Label Pickup Night, 5-7 pm, Clover Pavilion
- July 11th - Project Check In Non Community Judged Projects, 6-8 pm
- July 12th - Community Judging and Project Check In for all projects, 5-8 pm
- **July 15-19, 2024 - 2024 Dubois County 4-H Fair**



Newsletter

October 2023



Extension - Dubois County

Purdue Extension - Dubois County Office

P.O. Box 588 Jasper, IN 47547

Telephone: (812) 482-1782

www.extension.purdue.edu/dubois



Purdue University is an equal opportunity/equal access/affirmative action institution.

RETURN SERVICE REQUESTED

Jasper, IN 47547

P.O. Box 588

Purdue Extension - Dubois County Office



Extension - Dubois County

Newsletter

Non-Profit
U.S. Postage
PAID
Jasper, Indiana
Permit No. 189