

Clinton County Mini/Cloverbud 4-H Handbook



“To make the best better”

4-H Motto

1111 S. Jackson St
Frankfort, IN 46041
765-659-6380

Web site: <http://extension.purdue.edu/clinton>
Monday – Friday 8:00 a.m. – 4:00 p.m.



Extension - 4-H Youth
Development





THE 4-H EMBLEM

A four-leaf clover with the letter "H" on each leaflet, meaning the development of HEAD, HEART, HANDS, and HEALTH is the official 4-H Club emblem.

THE 4-H COLORS

Green (the clover) - nature's most common color is emblematic of springtime, life and youth.
White (the H's) - symbolizes purity and high ideals.



THE PLEDGE



I pledge my **HEAD** to clearer thinking,



my **HEART** to greater loyalty,

my **HANDS** to larger service,



and my **HEALTH** to better living,

for my club, my community, my country, and my world.

THE 4-H MOTTO

"TO MAKE THE BEST BETTER"

THE 4-H SLOGAN

"LEARN BY DOING"

What is Mini/Cloverbud 4-H?

The Mini/Cloverbud 4-H Program in Clinton County is designed specifically for youth in kindergarten through second grade of the current academic year. Mini/Cloverbud 4-H members will be able to explore several project areas that interest them at a non-competitive level. Projects may be displayed at the Clinton County 4-H Fair and be awarded a special 4-H ribbon.

Mini/Cloverbud 4-H serves as an introduction to the 4-H program. Mini/Cloverbud 4-H members can gain self-confidence and increase their self-esteem. Mini/Cloverbud 4-H provides youth guidance while learning a variety of skills. Youth develop pride and skills in their ability to complete and display their projects. The intent is to allow the Mini/Cloverbud 4-H member to have fun and enhance youth development and readiness for 4-H participation.

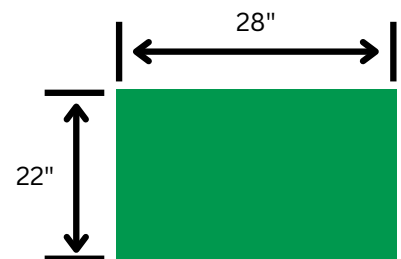
Mini/Cloverbud Requirements

1. Enrolled in kindergarten, first, or second grade of the current academic year.
2. Register online at 4honline.com
3. Attend 4-H club meetings and/or Mini/Cloverbud Day camp.

Poster Requirements

To replicate guidelines of the regular 4-H projects:

1. Posters must be displayed horizontally and measure 22" x 28"
2. To provide support, you may use heavy cardboard, or foam board.
3. All posters must be covered in clear plastic, plastic poster sleeves (NOTE: sleeves can be purchased from the Extension Office)
4. Posters should have a title that includes project name



Mini/Cloverbud Policies

Mini/Cloverbud 4-H Non-Competitive Policy

- The Mini/Cloverbud 4-H program is designed for children in kindergarten through second grade to explore friendships, learn how things work, and practice small and large muscle control.

The NON-COMPETITIVE learning environment for Mini/Cloverbud 4-H includes:

1. Planned learning activities in which children are invited to be active and explore materials and ideas without the pressure of completing a specific product or exhibit.
2. Low adult/leader to child ratio that allows time for adults/leaders to provide individual, positive encouragement and assistance.
3. Simple, interesting activities that are hands on.
4. Encouragement of children to participate in a group activity by sharing and or displaying their activity projects.

The next pages consist of projects that are offered to Mini/Cloverbud 4-H Members. Members may add or drop any of these projects throughout the year regardless if they have signed-up for them on 4-H Online. Please note that participating in livestock showmanship does require additional needs to be eligible to show during the Mini/Cloverbud Livestock Show. Examples are provided for each project and members may choose to exhibit a different age appropriate project for that category.



Aerospace

- Please choose one of the following options to exhibit using materials around your house like paper towel tubes and construction paper:

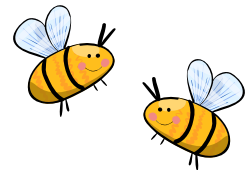
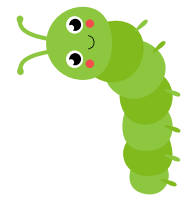
- Rocket- Kits can be purchased at the Extension Office
- Paper Airplane
- Solar System Mobile



Bugs (Entomology).

- Please choose one of the following topics and create a poster or notebook about it:

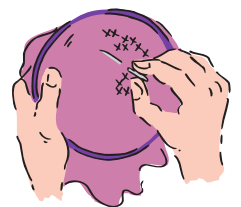
- Pick your favorite insect or spider. Label its body parts and describe its characteristics.
- Draw or find a picture of a butterfly and make sure the designs on its wings are symmetrical.
- Explain the different ways that bugs protect themselves.
- Using drawings or pictures cut out of magazines, showcase several kinds of bugs and/or spiders.



Craft

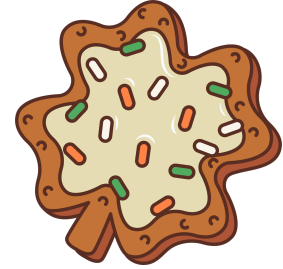
- Please choose one of the following options:

- Painting or drawing
- Jewelry
- Ceramics
- Gift Bag
- Needlepoint or counted cross stitch



Cookie Decorating

- Please choose one of the following options:
 - Create a poster or notebook displaying your basic cookie decorating skills.
 - Create a poster or a notebook that showcases a variety of cookies you have decorated, with a description for each.
 - Create three (3) decorated cookies on a disposable, covered 9-inch plate.



Electric

- Please choose one of the following options:
 - Exhibit an electric kit. Kits can be purchased at the Extension Office
 - Create a poster or notebook on 5 different tools needed to make electric projects
 - *See poster requirements on page 3.



Farm Toy Scene

Exhibit a farm scene. Exhibit a diorama, no larger than 12" wide x 16" deep x 8". The display should be on a board/box with a sturdy base. The farm scene may be highlighted with animals, equipment, crops, trees, etc. Cases are allowed but not required.





Floriculture

- Please choose one of the following options:
 - Display three cut flowers in a vase and attach a label identifying the type of flowers.
 - Display a flowering plant in a pot and attach a label identifying the type of plant.
 - Display a house plant and attach a label identifying the type of plant.
 - Display a poster that shows the different parts of a plant or flower.
 - Include at least three different kinds of labeled flowers in a notebook.

*See poster requirements on page 3



Foods

- Please choose one of the following options:
 - Prepare a peanut butter sandwich using two slices of bread, peanut butter, and an additional ingredient of your choice. Cut the sandwich into two or four pieces.
 - Create your own popcorn snack by including popped corn and another ingredient of your choice. Display it in a small plastic sandwich bag.
 - Make four no-bake cookies.
 - Prepare two marshmallow treat squares.
 - Create a poster that displays at least three kitchen safety rules.
 - Make a poster that shows the five food groups displayed on MyPlate from MyPlate.org. Include examples of what you would put on your plate to achieve a balanced diet.

▪ *See poster requirements on page 3.



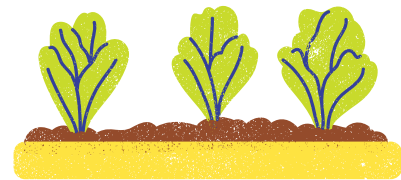
Forestry.

- Please choose from one of the following options:
 - Create a visual display of your observations after visiting a lumberyard.
 - Craft an art collage using materials collected during a walk in the woods.
 - Make an alphabet book using forest items representative of each letter of the alphabet.
 - Create a display highlighting ways people can help trees or products that come from trees.
 - Write a story or poem about your favorite tree.



Garden

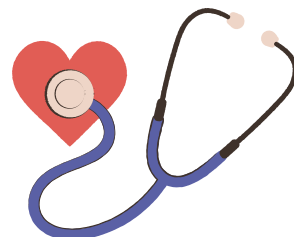
- Please choose one of the following options:
 - A plate consisting of a maximum of three types of vegetables.
 - A scrapbook containing pictures of various vegetables, with the name of each vegetable labeled.
 - A potted plant not exceeding 10 inches in diameter, which you have nurtured at least two months prior to judging.



Health

- Please create a poster or notebook about one of the following topics:
 - Being active, including reasons to be active and various ways to do so.
 - Eating smart, including information about smart snacking and portion sizes.
 - Eliminating germs, including tips on good dental care and proper hand washing.

▪ *See poster requirements on page 3



Models

Display one age appropriate model! Learn how to assemble, paint, or finish a model kit. Models could be from Legos or purchased kit. Finished product should not exceed 12 " x12 " dimensions.



Photography

- Exhibit the following on a poster according to the number of years in the project:
 - 1. First Year—Display five prints of non-moving objects such as landscapes, buildings, or scenery.
 - 2. Second Year—Showcase eight prints, including two slow-moving shots of animals or people, and six of your choice.
 - 3. Third Year—Show either ten prints of your choice or one 8 " X 10 " matted print of your choice.
 - *See poster requirements on page 3.

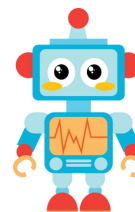


Recycling

- Please choose one of the following options:
 - A poster or notebook showcasing your understanding of recycling.
 - An object created from a material that would have been discarded otherwise.
 - *See poster requirements on page 3.



Robotics



- Please choose one of the following options:
 - Exhibit the robot you made from a kit. Kits can be purchased at the Extension Office.
 - Create a poster or notebook on 5 different tools needed to make robotics project
 - *See poster requirements on page 3.

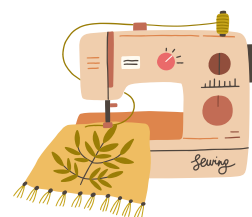


Scrapbook

- Present a scrapbook on a topic or event of your choice using six pages or fewer. Each side counts as a page.

Sewing

- Please choose one of the following options or age appropriate :
 - Pillow, pillow case, pillow sham
 - Scarf
 - Pin Cushion
 - Puppet



Small Animals

- Please choose from one of the following options:
 - Create a scrapbook or poster highlighting your beloved pet.
 - Make a poster, notebook, or display about pet care and well-being.
 - *See poster requirements on page 3



Weather



- Please choose one of the following options:
 - Create a rain gauge using a plastic bottle, tape, markers, and ruler
 - Create an wind vane using straws, paper, pencil with eraser, pin, scissors, cardboard
 - Create a daily weather journal for two weeks. Record the weather each day (sunny, cloudy, rainy, snowy, etc.). You can draw pictures of the weather and note the temperature (using a thermometer if available).

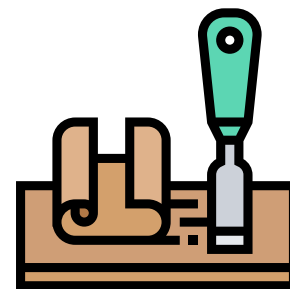
Wildlife



- Please choose one of the following options:
 - Create a poster or notebook on one of the following topics:
 - a. Birds
 - b. Bird-watching chart
 - c. Animal characteristics
 - d. Any wildlife habitat
 - Make a bird mobile.
 - Build a bird feeder.
 - *See poster requirements on page 3



Woodcraft



- Please choose one of the following options:
 - Build a wooden picture frame using popsicle sticks and glue. Decorate your frame using paint, glitter, or stickers (optional)
 - Build a birdfeeder or birdhouse using materials that you have at home or from a kit
 - Create a poster or notebook on 5 different tools needed to make wood projects

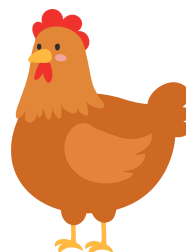
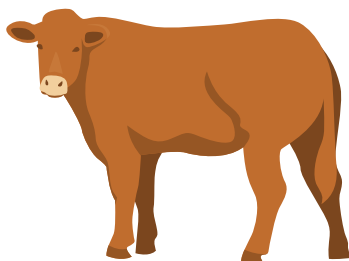
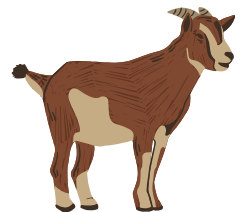
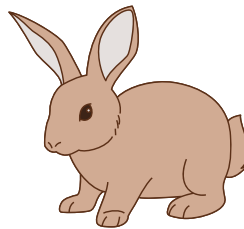
Animal Projects

Exhibit one or all of the following choices:

- Create a poster or notebook showcasing:
 - Pictures of selected animal(s), such as snapshots, magazine pictures, or drawings.
 - Your favorite breed of selected animal(s), including a picture, a short description, and an explanation of why it is your favorite.
 - Products/Services we get from selected animal(s)
 - Selected animal(s) general well-being and care
- Create a pop bottle animal and "show" it during the 4-H Mini/Cloverbud showmanship class at the fair.
- Participate in a special Mini/Cloverbud 4-H showmanship class by showing selected animal(s) at the fair. *Please see next page regarding specific information to exhibit animal(s) at the Clinton County 4-H Fair.

Animals that are offered to Mini/Cloverbud members:

- Cattle
- Dog
- Goat
- Horse & Pony
- Lama
- Poultry
- Rabbit
- Sheep
- Swine



Animal Showmanship:

Parents of Mini/Cloverbud 4-H Members must sign a liability release before the Mini/Cloverbud 4-H'er will be allowed to work with, care for or show an animal project. Mini (Second grade) 4-H Members may only show, work with, or care for animals over 300 pounds when they are assisted (adult has control of animal at all times) by a parent, legal guardian, or another adult designated in writing by parent or legal guardian. These species include Cattle, Horse & Pony, and Lama. Mini 4-H members exhibiting horses must wear ASTM or SEI standard F1163 (or above) certified helmets whenever mounted. The parent/guardian is responsible to see that this specified headgear is properly fitted with the approved harness in place and fastened whenever a rider is mounted. Mini/Cloverbud members that are exhibiting animals are required to work with their mentor for a minimum time based on the species below.

Animals eligible to show by kindergarten through second grade are:

Mini/Cloverbuds are required to work with their mentor(s) for at least 3, one-hour sessions per species.

- Dog
- Goat
- Poultry
- Rabbit
- Sheep
- Swine



Animals eligible to show by second grade only:

Mini are required to work with their mentor(s) for at least 5, one-hour sessions per species.

- Cattle
- Horse & Pony
- Lama

THE CLINTON COUNTY 4-H COUNCIL RECOMMENDS THE FOLLOWING FOR PROPER SHOW ATTIRE:

- Boots or closed toed shoes
- Jeans or long pants
- Button down collared shirt or other appropriate top. No tank tops, crop tops, or low cut shirts.