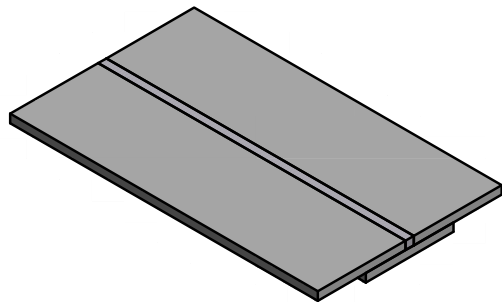
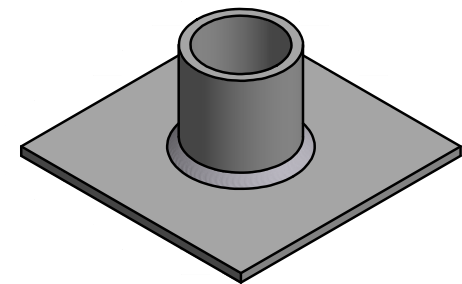
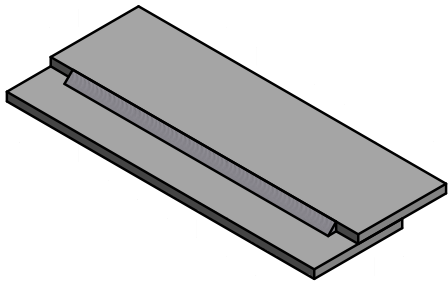
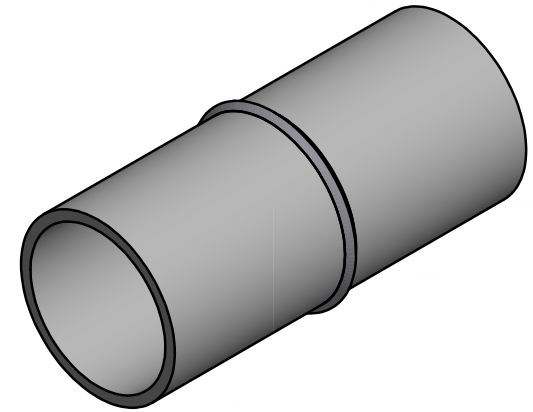
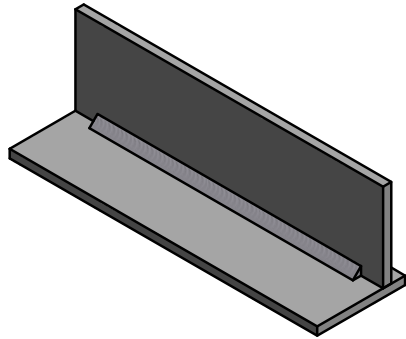


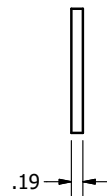
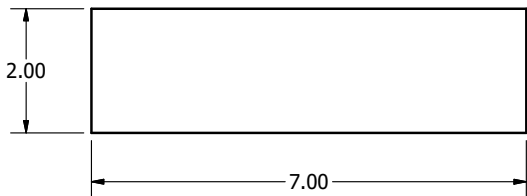
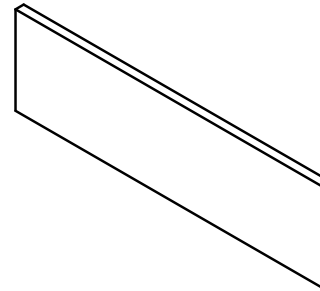
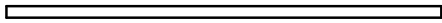
Joint Examples

Clay Co 4H Welding



What You'll Need for the joint welds

- 2 or 3 pcs of 2"x7" Mild steel plate



8

7

6

5



4

3

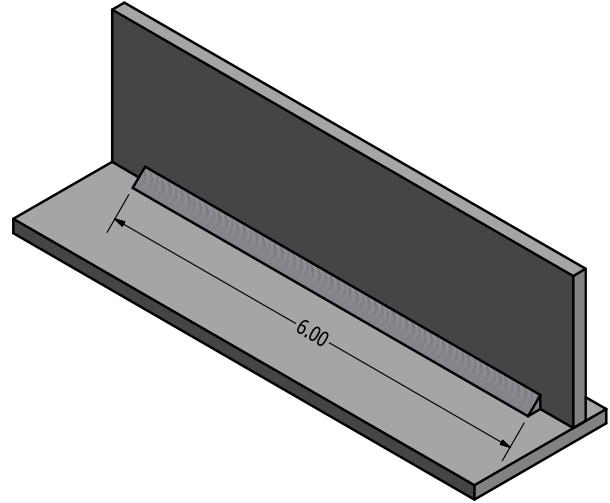
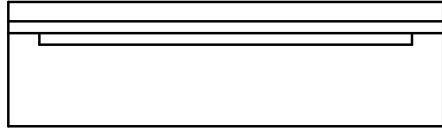
2

1

D

D

T Fillet



C

C

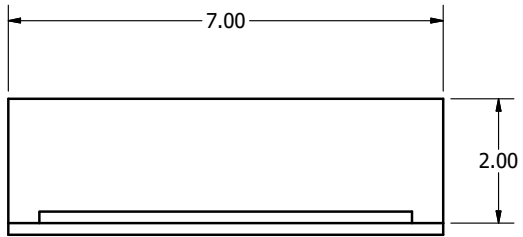


B

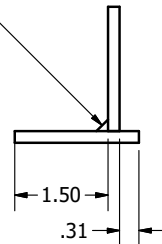
B

Notes:

- All tacks on the back of the part
- One 6" weld centered on part.
- Leave .500" on each end of weld.



.1875 6



A

A

8

7

6

5



4

3

2

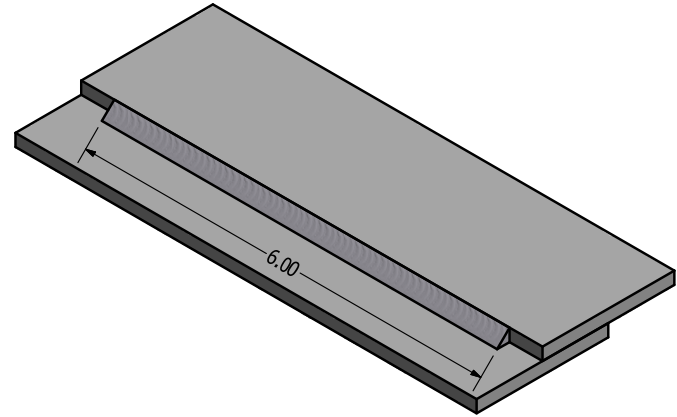
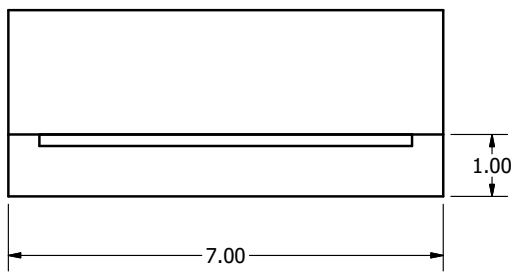
1

8 7 6 5 4 3 2 1

D

D

Lap Joint



C

C

B

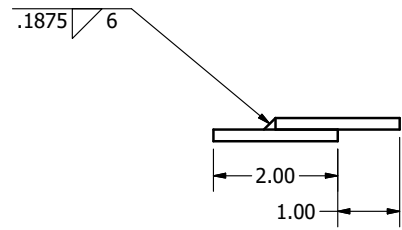
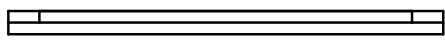
B

B

B

Notes:

- All tacks on the back of the part
- One 6" weld centered on part.
- Leave .500" on each end of weld.



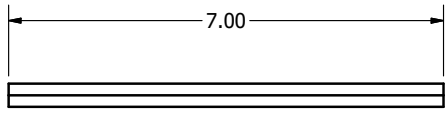
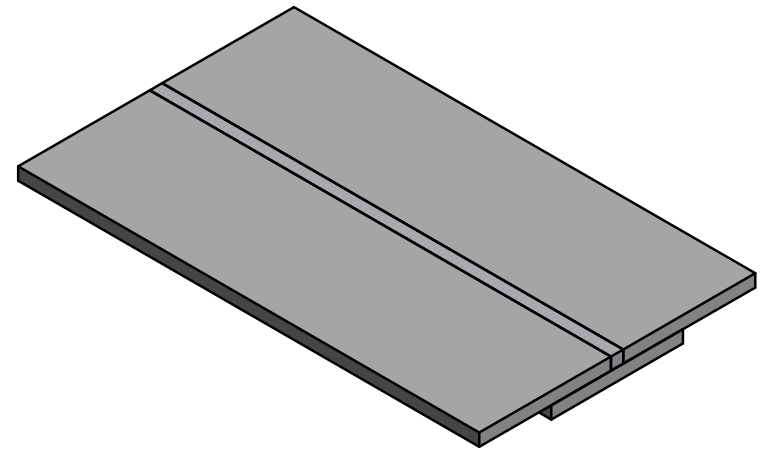
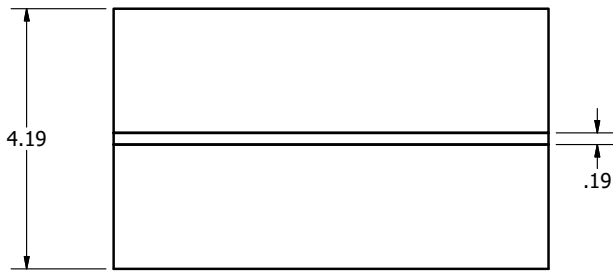
A

A

8 7 6 5 4 3 2 1

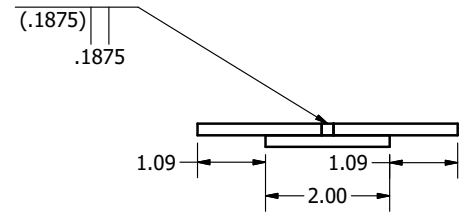
8 7 6 5 4 3 2 1

Butt Weld



Notes:

- All tacks on the back of the part
- Be sure to start with a .1875" gap
- Weld gap full to each end
- This part requires 3 pcs of plate.
- Use the third as a backing plate



8 7 6 5 4 3 2 1

D
C
B
A

D
C
B
A

8

7

6

5



4

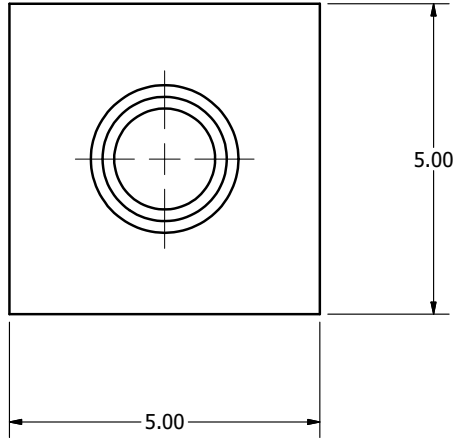
3

2

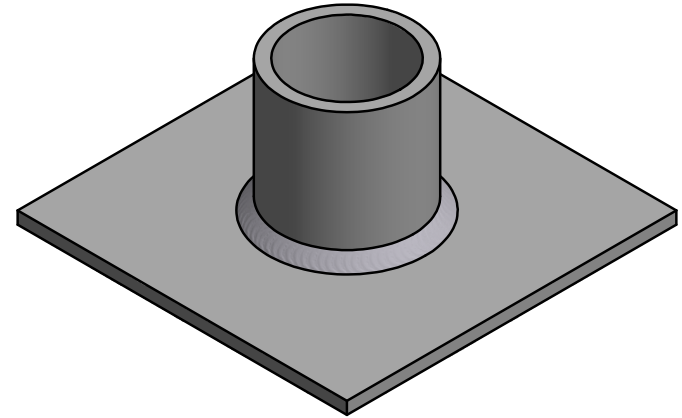
1

D

D



Pipe to Plate



C

C

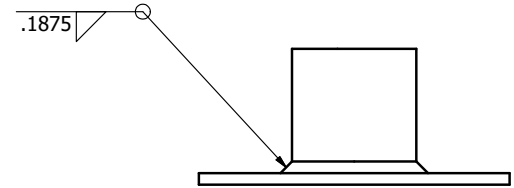
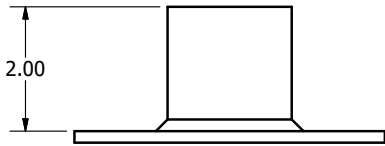


B

B

What You'll Need for this weld

- 1pc of 5"x5" Mild steel plate
- 1pc of 2" sch40 pipe 2" long



Notes:

- Center pipe on blank
- Weld continuous all the way around

A

A

8

7

6

5

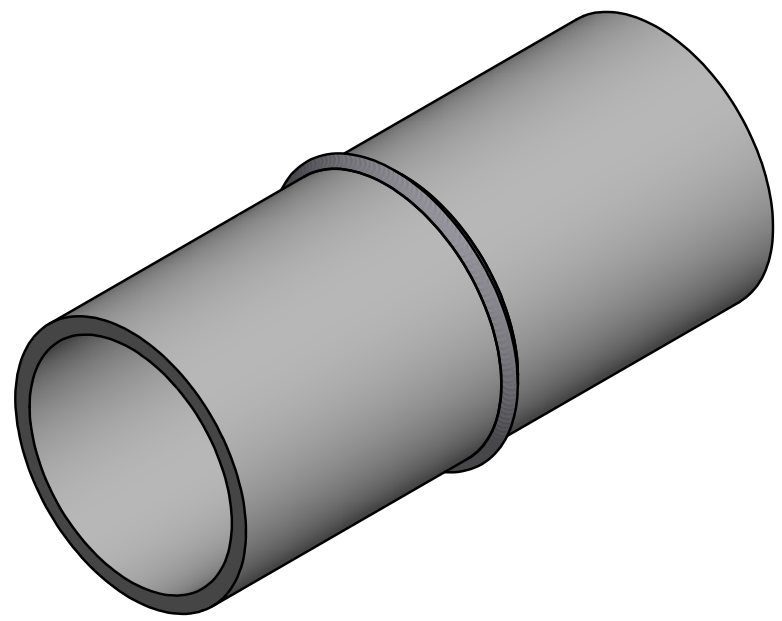


4

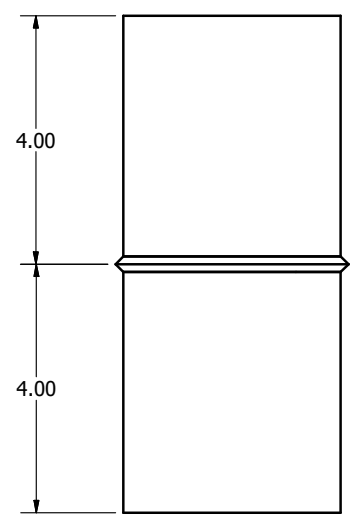
3

2

1



Pipe to Pipe

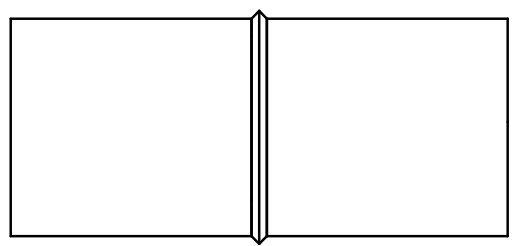
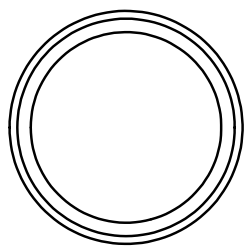


What You'll Need for the pipe to pipe weld

- 2 pcs of 3"sch 40 pipe 4" long

Notes:

- Grind bevel on pipe before welding
- Weld continuous all the way around



8

7

6

5



4

3

2

1

D

D

C

C



B

B

A

A

8

7

6

5



4

3

2

1