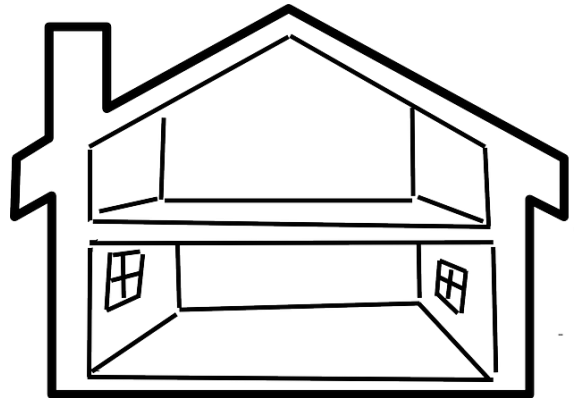
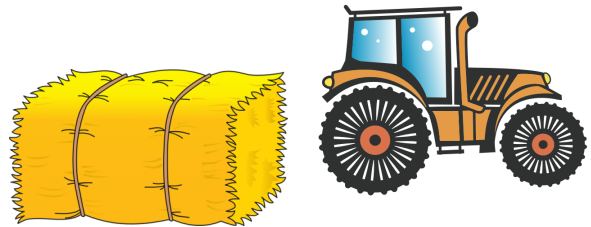


TOY FARM & DOLLHOUSE DIORAMA

Mini 4-H



Draft Developed by:
Purdue University Cooperative Extension Service
Area 7 4-H Youth Development Educators from
Blackford, Delaware, Fayette, Franklin, Henry, Jay,
Madison, Randolph, Rush, Union, & Wayne counties

Name _____ Year 20__

Club _____



Mini 4-H Parent's Page



Welcome to the Mini 4-H Program! Mini 4-H is designed for youth to explore a variety of project areas.

Your child received this project manual when enrolling in Mini 4-H. This manual will provide fun, age-appropriate learning activities throughout their year(s) in Mini 4-H and their interest in this project.

As a Mini 4-H parent, your job will be to guide and encourage your child through the activity. It is highly suggested that you do not complete the activities for them. Instead, help them, guide them, work with them, and let them do all that they possibly can. The 4-H motto is "learn by doing" and is the best educational tool that we can provide for youth.

Additionally, the Mini 4-H program is set up to allow your child to exhibit a project at the 4-H Fair. This project is based upon information within this manual.

The 4-H Fair is an exciting time for 4-H members and families. It is a time that allows community youth to showcase their talents, interests, and enthusiasm for learning.

Mini 4-H is fun! Your child will certainly enjoy it. You can have fun too, by guiding and helping as your child participates in the program. Encourage and praise your child as he/she has fun learning and sharing with you.

If you have any questions regarding Mini 4-H or other 4-H programs, please contact your local Extension Office.

Developed by Area VII Extension Youth Educators
Purdue University Cooperative Extension Service



Mini 4-Her's Page



Welcome to Mini 4-H! You are now a member of the 4-H family. You are a special person.

Mini 4-Hers have lots of fun! There are lots of activities for you to explore. You can try new things. You can share it with your friends and family.

Mom, Dad, or another adult can help you with your project. Bring your project to the 4-H Fair and lots of people will be able to see what you have done. You also get a ribbon made just for Mini 4-Hers.

Things to Know About 4-H

The 4-H Symbol:

A four-leaf clover with an "H" in each leaf.

The 4-H Colors:

Green and white

The 4-H Motto:

To make the best, better.

The 4-H Pledge:

I pledge my HEAD to clearer thinking,
my HEART to greater loyalty,
my HANDS to larger service, and
my HEALTH to better living, for my club,
my community, my country, and my world.





What To Exhibit



Here is a list of projects that can be shown at the 4-H Fair. Pick one project you would like to try. You do not have to make them in any order. Leave space in the lower right-hand corner for the exhibit card the Purdue Extension staff will provide. NOTE: Next year choose a different exhibit. You are encouraged to enter your exhibit with record sheet at the Cass County 4-H Fair on the Saturday designated in the 4-H Handbook from 7:30-9a.m.

- Create a farm themed diorama, no bigger than 10"X16" shoe-box. Display animals, shelter, food, crops, equipment, etc.
- Create a dollhouse themed diorama, no bigger than a 10"X16" shoe-box. You can make it 1-2 rooms of household items including furniture, appliances, decor and accessories, etc.





Farm or House



There are many kinds of homes. The home people live in is a house and farm animals are at home on the farm. These are called Environments. There are differences in the type of objects found in each one. Here are some examples.

- Barn
- Silo
- Tractor
- Hay Bales
- Fence
- Animals
- Table
- Chair
- Bed
- Lamp
- Book Case
- Pets

Activity 1 – Name the Farm Animal

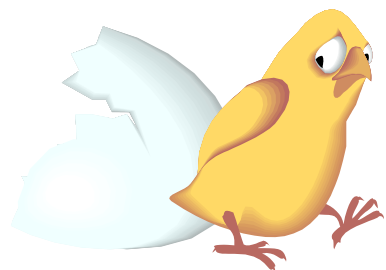
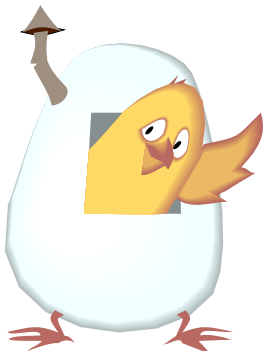
You will need:

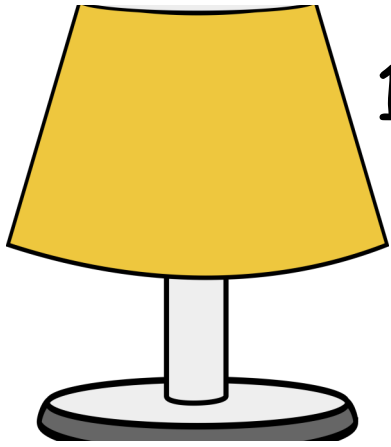
- Pencil
- Crayons, markers, or colored pencils
- The pictures on the next two pages



This is what to do:

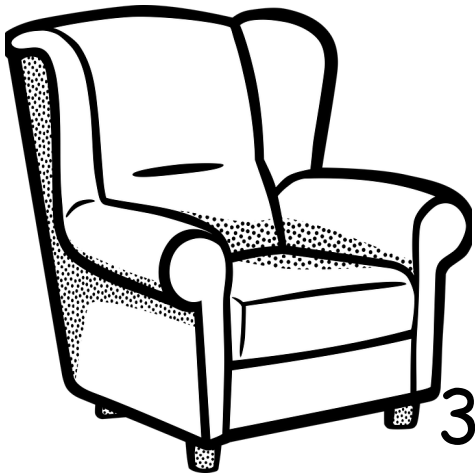
1. Look at the pictures of farm and home items on the next three pages.
2. Look at the names of items above
3. Write the name of the object next to the right picture.
4. Color the pictures.





1.

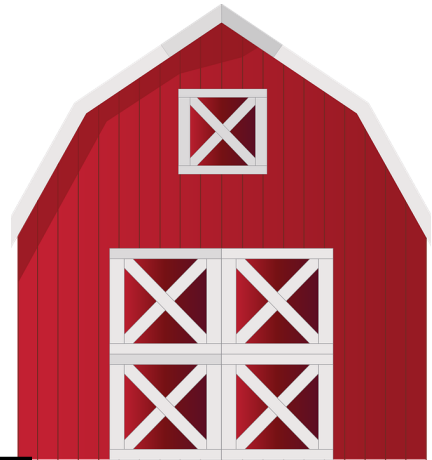
2.

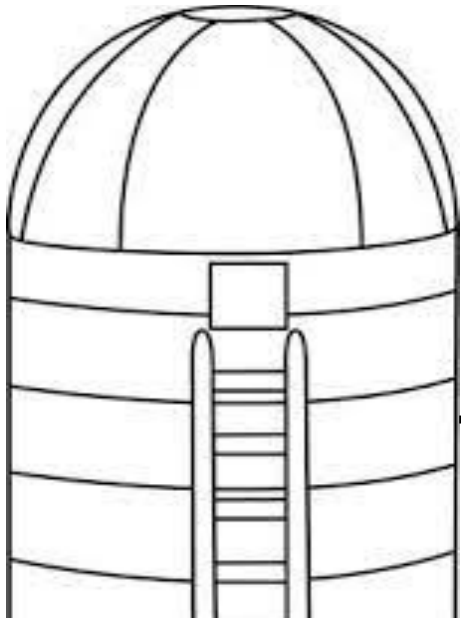


3.



4.

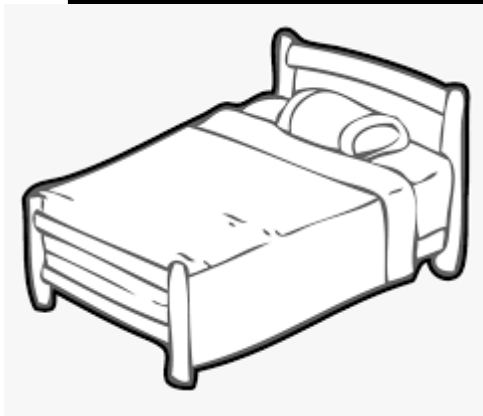




5.



6



7.

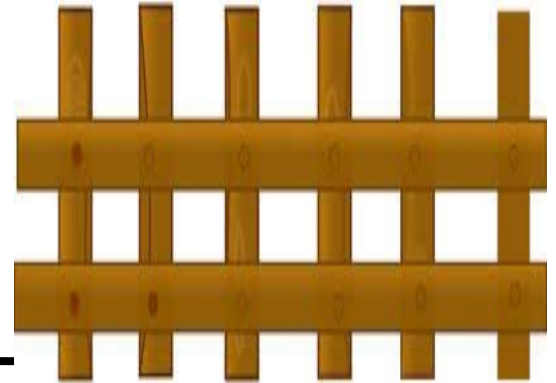


8.

8



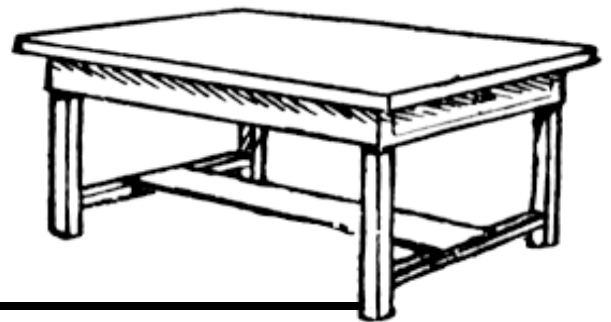
9.



10



11



12

Activity 1 Questions:

1. Could you name all of the items pictured? _____

2. What items listed do you have at home? _____

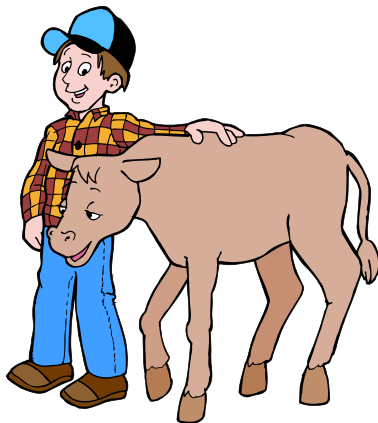
3. What kind of thing listed have you seen on the farm before?



Down on the Farm



Farms are very important. Farmers grow crops, like corn and wheat, that we eat and use to make bread and other food. They also raise farm animals for meat, eggs, milk and other products.



Farms come in many sizes. Some are very small and are called *hobby farms*. Hobby farms do not have many animals. People who own hobby farms work somewhere else. They raise animals for fun! Other farms are very large and are a business.



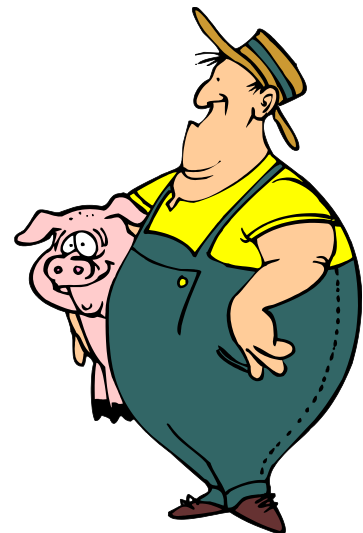
Activity 2 — Make Your Own Farm

You will need:

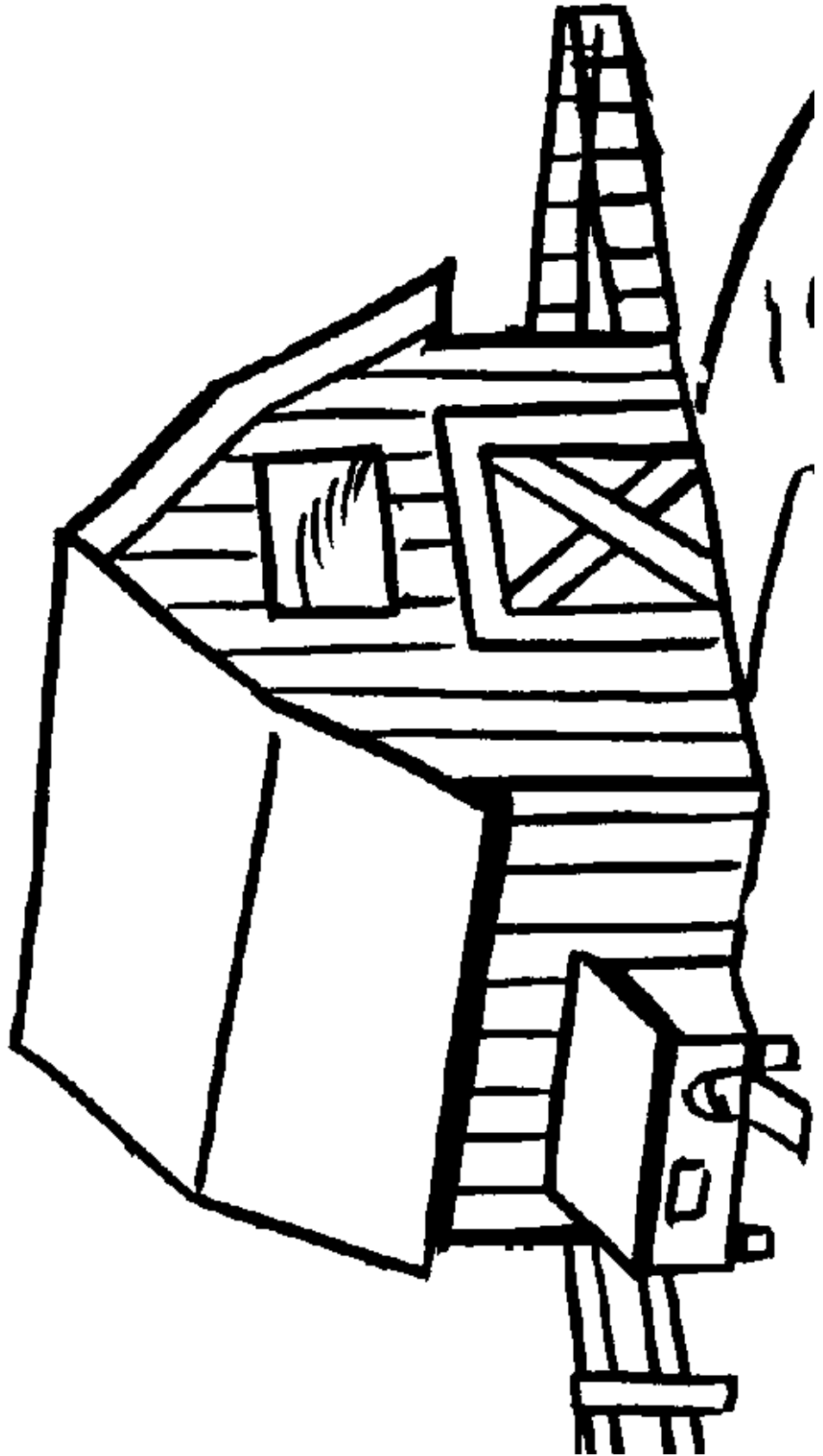
- Pencil
- Crayons, markers, or colored pencils
- The farm picture on the next page

This is what to do:

1. Think about how your farm would look. What kinds of animals would you raise?
2. Look at the animals in Activity 1 if you need help.
3. Draw your animals on the next page. There is a farm picture. Where would your animals like to spend the day?
4. Add more things to your farm. You can add grass, tractors, buildings and people. This is your farm — have fun!



My Farm





Home is where we live



The phrase "Home is where the Heart is" can describe the feeling we have when we are in our living environments surrounded by our family. It is where we spend most of our time and usually feel safe and sound. But we do a lot in our homes. In this activity, try to name three things we do in each of the rooms of our homes. You can describe chores, play activities, and you can include anyone who you might participate in these things as well. Do you have a room in your house that is not on the list? Add it to the column on the left and tell us how you use it.

Spaces in my house	Activity one	Activity Two	Activity Three
Living Room			
Kitchen			
Bedroom			
Bathroom			
Yard			



Activity 4-Farm/ Dollhouse Diorama

You will need:

- Modeling clay
- Toys
- Paper, plants, rocks, sticks – things to make your farm/dollhouse diorama
- Shoe-box

This is what to do:

1. Use modeling clay to make representations of the things you would see around your house or a farm. You can pick your favorite things.
2. Check the internet or the library for information. Have an adult help you.
3. Using things from around the house, make a farm/dollhouse model where you or your animal might live. Use a shoebox for your farm/house.
4. Add your toys and figures to the farm/dollhouse model.
5. Having fun? Make more things from your clay. Add them to the farm/dollhouse model too!

Activity 4 Questions:

1. What things did you make for your diorama? _____

2. What other things did you use in your diorama? _____

3. Where did you find information for your diorama? _____

Indiana Academic Standards

Indiana Academic Standards in this manual:

Grade One

- 1.4: Students ask questions about a variety of living things and everyday events that can be answered through observations. They become aware of plant and animal interaction. They consider things and processes that plants and animals need to stay alive.
- 1.4.2: Observe and describe that there can be differences, such as size or markings, among the individuals within one kind of plant or animal group.
- 1.4.3: Observe and explain that animals eat plants or other animals for food.
- 1.4.4: Explain that most living things need water, food, and air.
- 1.6.1: Handwriting: Print legibly and space letters, words, and sentences appropriately.

Grade Two

- 2.2.8: Follow two-step written instructions.
- 2.4.3: Observe and explain that plants and animals both need to take in water, animals need to take in food, and plants need light.
- 2.6.1: Handwriting: Form letters correctly and space words and sentences properly so that writing can be read easily by another person.

Compiled by

Angie Riffle, CED, Extension Educator, 4-H Youth Development, Franklin County

Reviewed and Edited by Area 7 Extension Educators

Rae Ann O'Neill, CED, 4-H/Youth Development, Blackford County
Rich Chalupa, 4-H/Youth Development, Delaware County
Jane Richard, 4-H/Youth Development, Delaware County
Bethany Ratts, 4-H/Youth Development, Henry County
Jonathan Ferris, CED, ANR, 4-H/Youth Development, Fayette County
Cindy Hartman, CFS, 4-H Youth Development, Fayette County
Cara Kobza, 4-H Youth Development, Jay County
Gary Simmons, 4-H/Youth Development, Madison County
Beth Leonhard, 4-H/Youth Development, Madison County
Laura Mickler, CFS, 4-H/Youth Development, Randolph County
Dan Kirtley, CED, ANR, 4-H/Youth Development, Randolph County
Kristie Amos, CED, 4-H/Youth Development, Rush County
Jennifer Logue, CED, ANR, 4-H/Youth Development, Union County
Debra Searcy, CED, 4-H/Youth Development, Wayne County

Sources

thecoloringspot.com

JANUARY 1998

REVISED, NOVEMBER 1998

REVISED, APRIL 2009

UPDATED, FEBRUARY 2023

UPDATED, JANUARY 2024

PURDUE AGRICULTURE

It is the policy of the Purdue University Cooperative Extension Service that all persons have equal opportunity and access to its educational programs, services, activities, and facilities without regard to race, religion, color, sex, age, national origin or ancestry, marital status, parental status, sexual orientation, disability or status as a veteran. Purdue University is an Affirmative Action institution. This material may be available in alternative formats.

PURDUE
UNIVERSITY

Purdue Extension
Knowledge to Go
1-888-EXT-INFO

Order or download materials at the *Purdue Extension Education Store* • www.extension.purdue.edu/new

MINI 4-H TOY FARM/DOLLHOUSE DIORAMA RECORD SHEET



FILL OUT THIS MINI 4-H FARM ANIMALS RECORD SHEET AND BRING IT WITH YOUR EXHIBIT TO THE 4-H FAIR.

NAME _____

YEAR IN MINI 4-H TOY FARM/DOLLHOUSE DIORAMA PROJECT _____

GRADE IN SCHOOL _____

CLUB ATTENDED _____

1. WHAT DID YOU LEARN MOST FROM YOUR MINI 4-H TOY FARM/DOLLHOUSE DIORAMA PROJECT?

2. HOW LONG DID IT TAKE YOU TO MAKE YOUR MINI 4-H TOY FARM/DOLLHOUSE DIORAMA PROJECT?

3. WHO HELPED YOU WITH YOUR MINI 4-H TOY FARM/DOLLHOUSE DIORAMA?

4. HOW DID THEY HELP YOU?

5. DESCRIBE THE MINI 4-H FARM/DOLLHOUSE DIORAMA YOU MADE

Leader Signature _____ Date _____



MINI 4-H TOY FARM/DOLLHOUSE DIORAMA RECORD SHEET

FILL OUT THIS MINI 4-H FARM ANIMALS RECORD SHEET AND BRING IT WITH YOUR EXHIBIT TO THE 4-H FAIR.

NAME _____

YEAR IN MINI 4-H TOY FARM/DOLLHOUSE DIORAMA PROJECT _____

GRADE IN SCHOOL _____

CLUB ATTENDED _____

1. WHAT DID YOU LEARN MOST FROM YOUR MINI 4-H TOY FARM/DOLLHOUSE DIORAMA PROJECT?

2. HOW LONG DID IT TAKE YOU TO MAKE YOUR MINI 4-H TOY FARM/DOLLHOUSE DIORAMA PROJECT?

3. WHO HELPED YOU WITH YOUR MINI 4-H TOY FARM/DOLLHOUSE DIORAMA?

4. HOW DID THEY HELP YOU?

5. DESCRIBE THE MINI 4-H FARM/DOLLHOUSE DIORAMA YOU MADE

Leader Signature _____ Date _____

