

# *OPEN CLASS EXHIBITS*

## *Home and Family Arts*



### **Carroll County**

July 11 - 18, 2026

***Pre-registration saves time and money.  
Sign up by July 1<sup>st</sup>. See pgs. 17 – 19.***

Purdue University prohibits discrimination against any member of the University community on the basis of race, religion, color, sex, age, national origin or ancestry, genetic information, marital status, parental status, sexual orientation, gender identity and expression, disability, or status as a veteran.

#### **Special Activities**

- Blueberries – 2026 - For Details See Page 6.
- Schedule of Events – See page 15
- Note – please make sure your project fits into one of the listed categories

**Special Notations** – Open Class is now located in the Learning Center of the 4-H Building. Please use the east doors on the north side of building.

If you need any accommodations,  
please contact Caren Jenkins prior to attending at 574-967-3538.

If you need an interpreter or translator,  
please contact Caren Jenkins prior to attending at 574-967-3538.

**CARROLL COUNTY FAIR  
OPEN CLASS COMPETITION  
GENERAL RULES**

1. Any Carroll County or adjacent county resident, 18 years or older, not enrolled in 4-H, may enter the Open Class Competition.
2. Each exhibitor may have only one entry in ANY ONE CLASS. **Note**, due to limited space: Only 1 entry in the Fine Art Division per exhibitor and only 1 entry per exhibitor in each category of the Photography Division. All entries must be made under one name. Please label with the name of exhibitor.
3. An entry fee of \$8.00 is required for 1 - 4 entries, a fee of \$12.00 for 5 – 8 entries, \$16.00 for 9 – 12 and \$20 for 13 or more. No refund(s) will be made. Cash, checks, or money orders are to be paid to the **Carroll County Extension Homemakers**. Send entry blank and fee to the Carroll County Extension Office, 102 N. 4<sup>th</sup> St. Suite B, Flora, IN 46929. Telephone: 574-967-3538.
4. Early entry deadline for the Open Class exhibits is 4:30 p.m. on July 1<sup>st</sup>. **NOTE: If you change your pre-registration, your changed item will be treated as a new entry. Thus, 1 - 4 items that were changed will cost \$10 (\$8 for the entry and \$2 for late fee).** Entries will be accepted until check-in time, however, a two-dollar (\$2.00) penalty per person will be charged after July 1<sup>st</sup>.
5. Non-perishable exhibits made for competition must have been made within the **past two years** and must be the work of the exhibitor.
6. Any article which has been previously exhibited at the fair is ineligible for exhibit again.
7. A person considered to be a professional (one who earns \$1,200 or more annually selling a product or teaching that technique) may not enter the specific competitive class in which she/he is or has been actively involved either in teaching the skill or selling the finished product with the intent of making a profit. She/he may enter any other class of competition.
8. Every precaution will be taken to ensure the safety of all articles, but in no case will management be responsible for loss or injury of articles.
9. If an article has a definite class, it can **only** be entered in that class.
10. Judges' helpers will form the committee which has the final decision in determining proper class and eligibility of article.
11. Champion and Reserve Champion ribbons may be given in each category if warranted and where specified. Grand Champion and Reserve Grand Champion will be given per division.
12. The decision of the judges will be final.
13. Entry tags will be attached to each entry. If you pre-register, your tags will be printed and waiting for you. If you do not pre-register, please fill out the information on **p.15 – 16** in advance of entering the registration line; please **PRINT** clearly with a dark pen.

For Food Competitions: Fillings, frostings, glazes, and meringues are not permitted to contain cream cheese, sour cream, heavy cream, or whipped cream if they are not fully cooked/baked. These items are allowed as ingredients in food products IF the final product is cooked/baked. Additionally, raw milk, raw milk products or uncooked eggs/egg whites are not permitted. Eggs/egg whites that have been cooked to 160oF (i.e. pasteurized or included as part of a batter and baked) are acceptable. No home-canned fruits, vegetables, or meats are permitted as ingredients in food products.

Foods should be transported to the competition in a way that minimizes contamination and maintains the quality of the food (i.e. foods that are judged as frozen should remain frozen at all times).

Recipes must be provided that identifies all ingredients that were used in each part of the product. Any ingredient that could be a potential allergen must be clearly identified. Potential food allergens include, but are not limited to, milk, eggs, peanuts, tree nuts, fish, crustacean shellfish, wheat, soy and sesame. Each food product must be labeled with the following information:

- Name
- Date the food product was made

Contestants should carefully wash their hands and make sure that their hands do not have any open cuts before preparing foods. If cuts are present, the wound should be bandaged and a single use food service glove worn on the hand during all stages of food production. Contestants should not be preparing food exhibits for competition within 48 hours of recovering from any illness. People experiencing symptoms of vomiting, diarrhea, fever, and/or jaundice should not be allowed to prepare food.

Judges and individuals who will consume products from county and/or state competitions should be informed that they are at risk for foodborne illness since the established policy cannot guarantee that an entry has been properly prepared or handled before, during or following the competition. The food products for competitions are home produced and processed and the production area is not inspected by the Indiana Department of Health. Tasting of a food product is solely at the discretion of the judge and consumers. Judges are NOT to taste any home preserved foods such as low-acid or acidified foods like green beans, tomatoes or tomato products, jams/jellies/fruit preserves or fermented products produced in the home.

14. Please note the **schedule of events**. Do not enter if you cannot exhibit as scheduled. You must abide by the schedule.

- Entries may be checked in at the Learning Center at the 4-H Building on Sunday, July 12<sup>th</sup> between 4:00 - 7:00 p.m. for all items, or Monday, July 13<sup>th</sup> between 7:30 - 8:30 a.m. for **foods, flowers and vegetables only.**
- Learning Center will be **closed** during judging and **reopened** at 5:00 pm.
- Articles will be released **ONLY from 4:30 – 6:30 p.m. on Friday.** (If you can't be here, please arrange for someone else to pick up for you.)
- All unclaimed articles will become the property of the Open Class Committee and will be disposed of by them.

## DIVISION I - FOOD PRESERVATION

### Rules:

1. All eligible entries must be in Ball or Kerr Home Canning Jars sealed with Ball or Kerr two-piece vacuum caps. All eligible entries must be heat processed following canning guidelines in the Ball Blue Canning guide or USDA guide.
2. **Label products** with the name of product, month, year and method of processing (water bath canner or pressure canner) and length of processing time.
3. All products must be preserved from the **end of previous year fair**
4. Include the recipe card covered in plastic.
5. Leave band on jars.
6. The judge will not open any of the jars.
7. All soft spreads should be in a standard jelly glass with a two-piece lid.

### Category A - Soft Spreads

- Class 1. Jams
- Class 2. Jellies
- Class 3. Preserves
- Class 4. Marmalade
- Class 5. Butters

### Category B - Vegetables

- Class 1. Green or yellow wax beans
- Class 2. Tomatoes
- Class 3. Beets, sliced or whole
- Class 4. Juices
- Class 5. Sauces (i.e. spaghetti or ketchup)
- Class 6. Salsas
- Class 7. Soups
- Class 8. Any other vegetable



### Category C - Fruits

- Class 1. Any fruit
- Class 2. Juices

### Category D - Pickled Foods

- Class 1. Whole pickles
- Class 2. Sliced pickles
- Class 3. Relish
- Class 4. Beets, sliced or whole
- Class 5. Miscellaneous pickled food

### Category E – Meats

- Class 1. Meat only
- Class 2. Meat sauces
- Class 3. Soups with meat
- Class 4. Meat broth

### Category F – Miscellaneous

- Class 1 – Syrup
- Class 2 – Honey

## DIVISION II - FOODS

### Rules:

1. The whole product will need to be brought for judging, except as noted.
2. Products are to be placed on stiff cardboard covered with waxed paper or foil, or on disposable plates. All products should be placed in zip-lock bags or covered with plastic wrap.
3. All products are to be made from scratch. No box mixes allowed in any category except category I or G – class 5.
4. ***Include the recipe card covered in plastic.***
5. Food products will have a portion removed for exhibit and the rest will be available for sale by donation in the 4-H building later Mon. afternoon.
6. Baked exhibits must be non-perishable.
7. For decorated cakes and cupcakes (Category F – Class 1 & 2), forms must be used. Icing must be Royal Icing or High Humidity Icing. Cakes will be judged for appearance only.

### Category A - Cakes

- Class 1. Angel food – Not iced
- Class 2. Layer cakes – Not iced
- Class 3. Miscellaneous (ex. Sheet cake)
- Class 4. Diabetic Cake

### Category B - Breads

- Class 1. White (1 loaf)
- Class 2. Whole wheat bread (1 loaf)
- Class 3. Shaped dinner rolls (6 rolls on a plate)
- Class 4. Sweet rolls (6 on a plate)
- Class 5. Fancy bread (1 loaf)

- Class 6. Multi-grain (1 loaf)
- Class 7. Gluten-free bread (1 loaf)
- Class 8. Miscellaneous yeast bread

Category C - Cookies

- Class 1. Rolled or molded (6 on a plate)
- Class 2. Drop (6 on a plate)
- Class 3. Bar (6 on a plate)
- Class 4. Diabetic Cookies (6 on a plate)
- Class 5. Gluten-free Cookies

Category D - Quick Bread

- Class 1. Muffins (6 on a plate)
- Class 2. Fruit and/or nut bread (1 loaf)
- Class 3. Biscuits or Scones (6 on a plate)

Category E - Fruit Pies or Crisp

- Class 1. Two crust pie
- Class 2. Crumb pie
- Class 3. Diabetic Pie
- Class 4. Crisp

Category F - Decorated Items

- Class 1. Cakes
- Class 2. Cupcakes
- Class 3. Cookies

Category G – Make a Dessert with Blueberries

- Class 1. Cakes
- Class 2. Cookies
- Class 3. Quick Breads - a. Muffins or b. Loaf
- Class 4. Pie or Crisp
- Class 5. Item made with a Mix

Category H – Candy or Snack Mix - including microwave

- Class 1. Fudge (3 pieces on a plate)
- Class 2. Brittle (3 pieces on a plate)
- Class 3. Candy, any other kind (3 pieces on a plate)
- Class 4. Any snack mix – such as trail mix, granola, flavored popcorn, etc. – display 1 cup in a zippered bag

Category I – Desserts/Breads Using Mixes

- Class 1. Cake
- Class 2. Cookies
- Class 3. Breads - a. Muffins or b. Loaf

## DIVISION III - SEWING

### Category A Garment

Class 1 - Dresses

Class 2 - Jackets/Coats/Suits

Class 3 – Casual wear or sportswear bottoms (includes skirts, shorts, shorts, or pants)

Class 4 – Casual wear or sportswear tops (includes tops or blouses)

Class 5 - Costume

Class 6 – Formal or Wedding Dress

Class 7 - Sleepwear

### Category B Accessories

Class 1 – Purses, Tote bags or Gym bags

Class 2 – Hats or Scarves

Class 3 – Aprons

Class 4 – Vests

### Category C Dolls / Toys

Class 1 - Doll clothes

Class 2 - Stuffed Toys

### Category D Non-wearable Items

Class 1 – Pillows

Class 2 – Potholders

Class 3 – Home Furnishings (curtains, bedspreads, knotted quilts, coasters, casserole carrier, etc.)

### Category E – Wearable Embellished Garments

Class 1 – Tops

Class 2 - Jackets

Class 3 – Bottoms

## DIVISION IV - NEEDLEWORK

Rules: All articles in frames must be ready for hanging.

### Category A - Quilting – Hand Quilted

Class 1. Bed sized quilt

Class 2. Baby quilt

Class 3. Pillows

Class 4. Miscellaneous quilted item

Category B - Quilting – Machine Quilted

- Class 1. Bed sized quilt
- Class 2. Baby quilt
- Class 3. Pillows
- Class 4. Miscellaneous quilted item

Category C - Crocheting

- Class 1. Afghan or throw
  - 1. Baby
  - 2. Full size
- Class 2. Baby item
- Class 3. Miscellaneous crocheted item
  - 1. Small articles (hats, scarves, collars, etc.)
  - 2. Large articles (sweater, etc.)
  - 3. Pillows

Category D - Knitting

- Class 1. Afghan or throw
  - 1. Baby
  - 2. Full size
- Class 2. Baby item
- Class 3. Miscellaneous knitted item
  - 1. Small articles (hats, scarves, collars, etc.)
  - 2. Large articles (sweater, etc.)
  - 3. Pillows
- Class 4. Other Knitting Types (Loom, Arm or Machines)
  - 1. Small articles (hats, scarves, collars, etc.)
  - 2. Large articles (sweater, afghans, etc.)



Category E - Counted Thread - Cross Stitch

- Class 1. Large item (the item itself must be 8" x 11" or greater, the frame dimensions are not included)
- Class 2. Small item (the item itself must be smaller than 8" x 11", the frame dimensions are not included)

Category F - Surface Stitchery

- Class 1. Crewel
- Class 2. Embroidery
- Class 3. Needlepoint
- Class 4. Plastic canvas
- Class 5. Swedish Weaving
- Class 6. Miscellaneous needlework

## DIVISION V – BASIC CRAFT

Category A - Holidays at the Fair (Christmas, Halloween, Easter, Valentine, Fourth of July, St. Patrick, etc.)

Class 1. A Single ornament - handmade

Class 2. A set of 3 ornaments - handmade

Class 3. Any other Holiday item (i.e., stockings, tablecloths, placemats, tree skirts, scarecrows etc.)

Category B - Heritage Skills

Class 1. Basket making

Class 2. Other weaving

Class 3. Tatting

Class 4. Latch Hook

Class 5. Spinning

Class 6. Miscellaneous (i.e., felting)

Category C - Other Cultural Arts

Class 1. Ceramics

Class 2. Stenciling

Class 3. Stained glass

Class 4. Glass Etching

Class 5. Decoupage

Class 6. Pottery

Class 7. Miscellaneous. - Other art medium i.e. sculpting, wood carving, etching, engraving, gourd painting, candles, soap, etc.

Category D - Jewelry

Class 1. Beads

Class 2. Wire

Class 3. Clay

Class 4. Knitted

Class 5. Crocheted

Class 6. Fired Glass

Category E - Dolls

Class 1. Handmade doll

Class 2. Decorative doll (i.e., corn husk, apple head, paper twist)

Category F - Fiber Art (Wearable and Non-wearable Art)

Class 1. Quilted Clothing

Class 2. Fabric Manipulation – Not Quilted

Class 3. Surface Design – (Dyeing, Printing, Stenciling, Painting, Multiple Techniques)

Class 4. Miscellaneous

- Category G - Cricut Machine Crafts  
Class 1. Cups and Mugs  
Class 2. Clothing (t-shirt)  
Class 3. Woodwork or Metal art

## DIVISION VI – MEMORY SAVERS

Description – Keepsake projects that showcase memories.

Category A – Shadow Box

Category B - Wall Hangings

Category C – Scrapbooking – Exhibits **MUST** be original, 2 pages, facing (like an open book) layout of a single, coordinated idea that flows from the first page to the second, and include at least one photograph or memorabilia. Suggestion for the safety of the scrapbook: **entries should not be in an album**, and each page **must be covered with plastic page protectors** for public viewing.

Category D – Miscellaneous (Example – pillows, quilts or blankets – out of memory items or Teddy bears out of family clothing, or photo album, etc.) – NOTE: Please attach a brief description of the item made and the memory items included.

## DIVISION VII - FINE ART

**\*\*\*Please note – only one entry per participant in the fine art division because of limited space\*\*\***

The artwork must follow these *four* rules:

- ◆ framed and prepared for hanging.
- ◆ must have been made within the past two years
- ◆ not exhibited previously at the Carroll County Fair
- ◆ must be the work of the exhibitor.

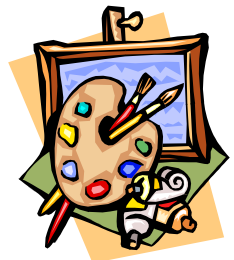
Category A - Pictures - Still life

Class 1 - oils, acrylics on canvas, canvas board

Class 2 - watercolors on paper

Class 3 - pastels, charcoal, ink, and pencil on paper

Class 4 – mix media



Category B - Pictures - Portrait

Class 1 - oils, acrylics on canvas, canvas board

Class 2 - watercolors on paper

Class 3 - pastels, charcoal, ink, and pencil on paper

Class 4 – mix media

Category C - Pictures – Natural Landscape

Class 1 - oils, acrylics on canvas, canvas board

Class 2 - watercolors on paper

Class 3 - pastels, charcoal, ink, and pencil on paper

Class 4 – mix media

Category D - Pictures - Animal Life

Class 1 - oils, acrylics on canvas, canvas board

Class 2 - watercolors on paper

Class 3 - pastels, charcoal, ink, and pencil on paper

Class 4 – mix media

Category E - Pictures - Seascape

Class 1 - oils, acrylics on canvas, canvas board

Class 2 - watercolors on paper

Class 3 - pastels, charcoal, ink, and pencil on paper

Class 4 – mix media

Category F - Pictures - Flowers

Class 1 - oils, acrylics on canvas, canvas board

Class 2 - watercolors on paper

Class 3 - pastels, charcoal, ink, and pencil on paper

Class 4 – mix media

Category G - Pictures – Architectural Structures

Class 1 - oils, acrylics on canvas, canvas board

Class 2 - watercolors on paper

Class 3 - pastels, charcoal, ink, and pencil on paper

Class 4 – mix media

Category H - Pictures – Miniatures – no larger 5” x 7”

Class 1 - oils, acrylics on canvas, canvas board

Class 2 - watercolors on paper

Class 3 - pastels, charcoal, ink, and pencil on paper

Class 4 – mix media

Category I - Pictures - Miscellaneous

Class 1 - oils, acrylics on canvas, canvas board

Class 2 - watercolors on paper

Class 3 - pastels, charcoal, ink, and pencil on paper

Class 4 – mix media

Category J - Adult Coloring Page (preprinted) - Must be attached to the mat board so it can be hung. NOTE: No copies – original preprinted page only. No computer-generated coloring. Medium used must be indicated on the back of the mat board.

## DIVISION VIII - FLOWER ARRANGEMENT

Category A - Silk

Category B - Dry

Category C - Fresh

Category D - Wreath

Category E – Corsages (any type – silk, dry, fresh)



## DIVISION IX - FLOWERS

Rules:

1. Flowers must have been grown by the exhibitor. Nothing artificial may be used.
2. Each exhibitor should mark the flower container and all equipment clearly with their name and be responsible for the same. (Note: mark on the bottom where the name is not seen by judges.)
3. Potted plants must have been in possession of exhibitor for at least three months previous to showing. The pot must be in proportion to the size of the plant.
4. Exhibit single flower in a suitable disposable container - container will not be judged (i.e., pop bottle, baby food jar).
5. Exhibitor is responsible for the care of their plants.



Category A - Single Bloom or One Specimen – (exhibit with foliage)

You can enter up to 5 different single blooms as long as they are a different species (such as rose, marigold, lily).

Category B - House Plants - container not exceeding 10"

Class 1. Foliage plant

Class 2. Flowering plant, must be blooming

Class 3. African Violets, must be blooming

- Class 4. Cacti
- Class 5. Terrarium
- Class 6. Dish Garden
- Class 7. Miscellaneous

Category C - Patio Plants or Hanging Basket

(Plants will be set on table. Please furnish your own pedestal if needed.)

- Class 1. Foliage Plant
- Class 2. Flowering Plant
- Class 3. Container Garden – Variety of plants

## **DIVISION X – PHOTOGRAPHY**

**\*Please note – only one entry per category per participant in each photography category because of limited space\***

***Rules for ALL Photography:***

1. Mount neatly on mat board or poster board with at least a ½" margin and no larger than 3" margin.
2. Sepia prints will be exhibited under black and white.

Category A - Black and White - Standard size of 3" x 5", 4" x 6", Small enlargement – no larger than 5" x 7" or panoramic, or Salon Print 8" x 10" - 11" x 14"

Category B - Color - Standard size of 3" x 5", 4" x 6", Small enlargement – no larger than 5" x 7" or panoramic, or Salon Print 8" x 10" - 11" x 14"

## 2026 Open Class Sponsors

Carroll Co. Ag Association  
Collisions Unlimited  
Tier One Meat Company  
Robin & Carolyn Maxwell  
Susie Dyke  
Sandra McCain  
Silver Bells EH Club

A special **“Thank You”** to our award sponsors for their interest and support of the Open Class exhibits.

*Winners* - Please contact your award sponsor and let them know that you do appreciate their support.

A **“Thank You”** also to all the participants.



## SCHEDULE OF EVENTS

### Learning Center in the 4-H BUILDING SCHEDULE

Sunday - Project Check-In .....	4:00 – 7:00 p.m.
Monday - Project Check-In (Foods & Flowers Only) .....	7:30 a.m. – 8:30 a.m.
Project Judging .....	10:00 a.m.
Exhibits Open to Public... ..	5:00 – 8:00 p.m.
Tuesday - Exhibits displayed .....	8:00 a.m. – 8:00 p.m.
Wednesday - Exhibits displayed .....	8:00 a.m. – 8:00 p.m.
Thursday - Exhibits displayed .....	8:00 a.m. – 8:00 p.m.
Friday – Exhibits released.....	4:30 p.m. – 6:30 p.m.





# CARROLL COUNTY FAIR

## OPEN CLASS COMPETITION

### ENTRY BLANK

NAME \_\_\_\_\_

ADDRESS \_\_\_\_\_

PHONE \_\_\_\_\_  
(Area Code)

CLUB \_\_\_\_\_  
(If Extension Homemaker Member)

Please indicate DIVISION, CATEGORY, CLASS, plus DESCRIPTION OF ARTICLE. **Please complete entry blank in full. See example below – You can just list # and letters.**

DIVISION II – Foods      DIVISION \_\_\_\_\_

CATEGORY G – Make Dessert      CATEGORY \_\_\_\_\_

CLASS 3 – Quick Bread      CLASS \_\_\_\_\_

DESCRIPTION a – Muffin      DESCRIPTION \_\_\_\_\_

DIVISION \_\_\_\_\_

DIVISION \_\_\_\_\_

CATEGORY \_\_\_\_\_

CATEGORY \_\_\_\_\_

CLASS \_\_\_\_\_

CLASS \_\_\_\_\_

DESCRIPTION \_\_\_\_\_

DESCRIPTION \_\_\_\_\_

DIVISION \_\_\_\_\_

DIVISION \_\_\_\_\_

CATEGORY \_\_\_\_\_

CATEGORY \_\_\_\_\_

CLASS \_\_\_\_\_

CLASS \_\_\_\_\_

DESCRIPTION \_\_\_\_\_

DESCRIPTION \_\_\_\_\_

**Use the back of this entry blank for additional entries.**

DIVISION \_\_\_\_\_

CATEGORY \_\_\_\_\_

CLASS \_\_\_\_\_

DESCRIPTION \_\_\_\_\_

DIVISION \_\_\_\_\_

CATEGORY \_\_\_\_\_

CLASS \_\_\_\_\_

DESCRIPTION \_\_\_\_\_

DIVISION \_\_\_\_\_

CATEGORY \_\_\_\_\_

CLASS \_\_\_\_\_

DESCRIPTION \_\_\_\_\_

DIVISION \_\_\_\_\_

CATEGORY \_\_\_\_\_

CLASS \_\_\_\_\_

DESCRIPTION \_\_\_\_\_

DIVISION \_\_\_\_\_

CATEGORY \_\_\_\_\_

CLASS \_\_\_\_\_

DESCRIPTION \_\_\_\_\_

DIVISION \_\_\_\_\_

CATEGORY \_\_\_\_\_

CLASS \_\_\_\_\_

DESCRIPTION \_\_\_\_\_

DIVISION \_\_\_\_\_

CATEGORY \_\_\_\_\_

CLASS \_\_\_\_\_

DESCRIPTION \_\_\_\_\_

DIVISION \_\_\_\_\_

CATEGORY \_\_\_\_\_

CLASS \_\_\_\_\_

DESCRIPTION \_\_\_\_\_

An entry fee of \$8.00 is required for 1 - 4 entries and a fee of \$12.00 for 5 – 8 entries and \$16.00 for 9 – 12 entries and \$20 for 13 or more. Make Check Payable to: **Carroll County Extension Homemakers.**

Return this sheet & check by **July 1, 2026**, to:

Carroll County Extension Office  
102 N. 4<sup>th</sup> St., Suite B,  
Flora, IN 46929

# HOME & FAMILY ARTS VOLUNTEER SIGN-UP FORM

NAME \_\_\_\_\_

ADDRESS \_\_\_\_\_

PHONE \_\_\_\_\_ CLUB \_\_\_\_\_  
 (Area Code) (If Ext. Homemaker Member)

\_\_\_\_\_ Yes, I can help with:

- \_\_\_\_\_ Entering, judging and arranging displays for exhibit.
  - \_\_\_\_\_ Sunday 4:00 - 7:00 p.m., entering
  - \_\_\_\_\_ Monday 7:30 - 8:30 a.m., entering
  - 10:00 - 12:00 noon, judging
  - 12:00- 3:00 p.m., arranging displays

\_\_\_\_\_ I am interested in helping with:

- |                         |                      |
|-------------------------|----------------------|
| _____ Food Preservation | _____ Memory Savers  |
| _____ Foods             | _____ Fine Art       |
| _____ Sewing            | _____ Flower Arrgmt. |
| _____ Needlework        | _____ Flowers        |
| _____ Basic Craft       | _____ Photography    |

\_\_\_\_\_ Hostess For Exhibits in Learning Center in 4-H Building  
**(Circle Day)**

- |                                  |       |      |        |
|----------------------------------|-------|------|--------|
| _____ 8:00 a.m.-10:00 a.m.       | Tues. | Wed. | Thurs. |
| _____ 10:00 a.m.-noon            | Tues. | Wed. | Thurs. |
| _____ noon - 2:00 p.m.           | Tues. | Wed. | Thurs. |
| _____ 2:00 p.m. - 4:00 p.m.      | Tues. | Wed. | Thurs. |
| _____ 4:00 p.m. - 6:00 p.m. Mon. | Tues. | Wed. | Thurs  |
| _____ 6:00 p.m. - 8:00 p.m. Mon. | Tues. | Wed. | Thurs. |

- \_\_\_\_\_ Releasing exhibits
  - \_\_\_\_\_ Friday - 4:30 – 6:30 p.m.

Return this sheet to: Carroll County Extension Office  
 102 N. 4<sup>th</sup> St., Suite B,  
 Flora, IN 46929

**Return by July 1, 2026**

Your time will be confirmed. If you cannot help for the entire time, put in the time that you can.