

Carroll County

Mini 4-H Handbook



The 4-H Emblem

a four-leaf clover with the letter "H" on each leaflet meaning the development of **HEAD, HEART, HANDS, HEALTH** is the official 4-H Club emblem.

The Colors

Green (the clover) - nature's most common color is emblematic of springtime, life and youth

White (the H's) - symbolizes purity and high ideals

The Pledge

I pledge my **HEAD** to clearer thinking,
my **HEART** to greater loyalty,
my **HANDS** to larger service,
and my **HEALTH** to better living,
for my club, my community,
my country, and my world.

the 4-H Club Motto

"TO MAKE THE BEST BETTER"

The 4-H Slogan

"LEARN BY DOING"

What is Mini 4-H?

The Mini 4-H Program in Carroll County is designed specifically for youth in kindergarten through second grade of the current academic year. Mini 4-H members will be able to explore several project areas that interest them at a noncompetitive level. Completed projects may be displayed at the Carroll County 4-H Fair and be awarded a special Mini 4-H ribbon.

Mini 4-H Requirements

1. Enrolled in kindergarten, first, or second grade of the current academic year
2. Register online at 4honline.com
3. Attend Mini 4-H club meetings or camps, when possible
4. If participating in livestock showmanship, work with livestock superintendent and 4-H Educator to establish with a Mini Mentor

Contacts

Purdue Extension Carroll County
102 N 4th St. Flora, IN 46929
(574) 967-3538
carrollces@purdue.edu

Gretchen Campbell - 4-H Youth Educator
gblackbu@purdue.edu

Website Links

4-H Online - Enroll in 4-H, select projects, register for events

www.4honline.com

FairEntry - Enter 4-H projects being brought to the fair for labels, class breaks, show bills, results, and promotion to state fair

<http://carroll-county-indiana.fairentry.com>



Fair Guidelines

Building Project Judging

Mini 4-Hers will bring their building projects to the 4-H Building on Saturday, July 14th. They will check their project(s) in with a 4-H volunteer or Extension Personal, tag their item, and then they will talk to a "judge," one of the Carroll County Junior Leaders who will ask them questions about what they did and learned. If the project is valuable or fragile, the 4-Her can take it home, otherwise it will be put on display during fair week.

Building Project Pick-Up

Projects and ribbons are to be picked up the Friday of fair week.

Show Day Apparel

On show day, Mini 4-Hers can wear jeans, boots and a button-up or nice shirt.

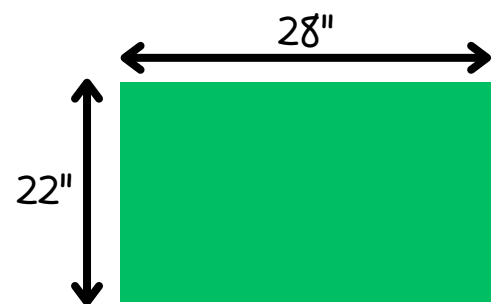
Show Day Knowledge

Judges usually ask questions about the animal's sex, breed, and/or name, so it is helpful to go over basic information about the animal beforehand.

Poster Guidelines

To replicate guidelines of the regular 4-H projects:

1. Posters must be displayed horizontally and measure 22" x 28"
2. To provide support, you may use heavy cardboard, or foam board
3. All posters must be covered in clear plastic, plastic poster sleeves (NOTE: sleeves can be purchased from the Monroe Achievers 4-H Club)
4. Posters should have a title that includes project name



MINI 4-H POLICIES

Mini 4-H Non-Competitive Policy

The Mini 4-H program is designed for children in kindergarten through second grade to explore friendships, learn how things work, and practice small and large muscle control. The non-competitive learning environment includes planned activities where children can explore without pressure, a low adult-to-child ratio for individual attention, simple and fun activities, encouraging participation in group activities, and rewards that are identical for everyone.

Safety Policy for Mini 4-H Members

The safety and well-being of 4-H youth is of the utmost importance. While kindergarten is the age at which children can begin participating in 4-H events and activities, parents are encouraged to **consider their child's physical and mental development before allowing them to show, work with, or care for animals.**

The State 4-H Youth Program at Purdue University has allowed Mini 4-H members in grades K-2 to participate in animal projects, subject to certain conditions specified by each county.

Mini 4-H members in grades K-2 must have a liability release signed by their parent or legal guardian before being able to independently show, work with, or care for animals weighing 300 pounds or less. If the animal weighs over 300 pounds, the child must be assisted by a parent, legal guardian, or adult designated in writing by the parent or legal guardian. The adult must have control of the animal at all times.

***THE LIABILITY FORM IS FOUND AS THE LAST PAGE OF THIS BOOKLET.**

Mini 4-H members exhibiting horses must wear ASTM or SEI standard-certified helmets whenever mounted. The parent/guardian must ensure that the specified headgear is properly fitted with the approved harness in place and fastened whenever the rider is mounted.

If the guidelines in this policy are not followed, any event or activity will not be considered to be a 4-H event or activity and will not be under the auspices of Extension 4-H educators or covered by Purdue University

Mini 4-Hers DO NOT participate in the Premium Livestock Auction.

Aerospace

Segway into 4-H Aerospace

Exhibit a rocket:

Design and make your own rocket using materials around your house like paper towel tubes and construction paper.



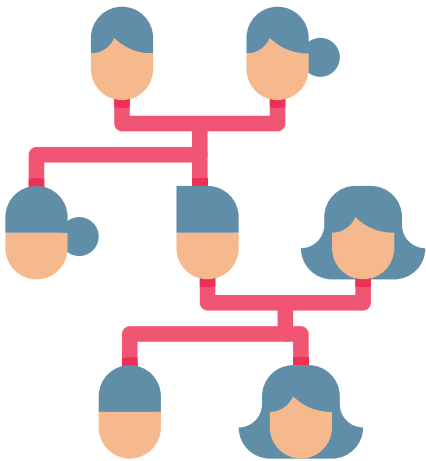
All about Me

Segway into 4-H Genealogy

Exhibit one of the following:

1. Draw a tree and label the branches with the names of your family members and complete the "All About Me" sheet by drawing and coloring pictures and adding information about you. Exhibit in a notebook
2. Create a poster of your family tree using pictures and labeling the members from oldest to youngest

Additional Material: "All About Me" Worksheet included



Animal Poster

Segway into 4-H Animal Education, Vet Science

Create a poster:

Tell a story about an animal you own, and/or care for, or you would like to own one day. Any animal may be used. Photographs may be used. Include a title.



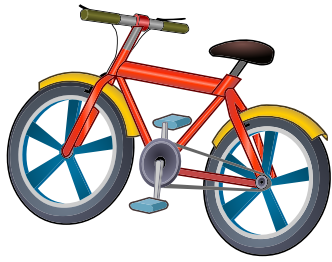


Exhibit one of the following:

1. A poster labeling the parts of your bike
2. A poster with pictures and descriptions of traffic signs around your home
3. Ride your bike in the Mini Bicycle rodeo class at fair

Bicycle

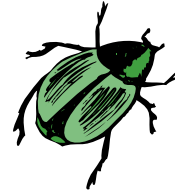
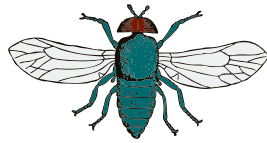
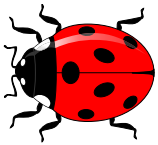
Segway into 4-H Bicycle

Bugs

Segway into 4-H Entomology

Exhibit one of the following:

1. Collect and display three insects pinned on a display. List the bugs common name and habitat
2. Share facts on a poster about your favorite bug - label its body parts and describe facts about your bug
3. Make a shoebox habitat for a bug you collected



Collections

Segway into 4-H Collections

Exhibit one of the following:

1. Talk to family and friends. Create a drawing of things they like to collect and why they like to collect it
2. Gather a collection of five items you like to collect. Display in a scrapbook, shoebox or display case. If you take the collection to the fair more than one year, try adding 3 new items to your collection each year

Please ensure your collection follows applicable state laws



Cookie Decorating

Segway into 4-H Cake/Cupcake Decorating

Exhibit one of the following:

1. Create a poster displaying a time you made cookies and decorated them with someone in your family
2. Create three (3) decorated cookies on a disposable, covered 9-inch plate:

Division 1 (Kindergarten/1st grade): Cookies should have frosting, sprinkles, or candy on top

Division 2 (2nd grade): Cookies should have smooth frosting on top and have a theme with a border and artwork made of frosting





Display one Art or Craft!

Paint, weave, build – get creative and make a craft. There are no limits to the opportunities! Craft examples include a sun catcher, Legos, basket, painted canvas, clay project, ect.

Crafts

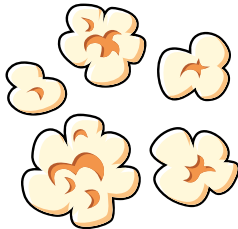
Segway into 4-H Arts & Crafts

Flower/Garden

Segway into 4-H Floriculture, Garden

Exhibit one of the following:

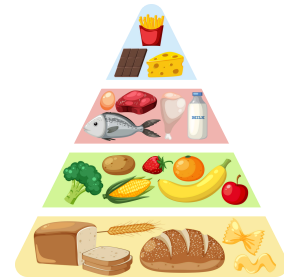
1. Display three cut flowers in a disposable vase and attach a label identifying the types of flowers
2. Display a poster that identifies different parts of a plant or flower
3. Display a poster or notebook of how to care for a garden, include fertilizer, tools, when to plant and other important information
4. A disposable 9-inch plate consisting of a maximum of three types of vegetables



Foods

Segway into 4-H Foods

Exhibit one of the following:



1. Prepare a peanut butter sandwich using two slices of bread, peanut butter, and an additional ingredient of your choice. Cut the sandwich into two or four pieces. Present on a plate w/ a plastic cover. **Include an ingredients card**
2. Create your own popcorn snack by including popped corn and up to two other ingredients of your choice. Present in a zip-lock bag. **Include an ingredients card**
3. Create a poster that displays at least 3 kitchen safety rules
4. Follow the MyPlate guidelines and assemble a poster with drawings of 5 food groups you would put on your plate to achieve a balanced diet

Models

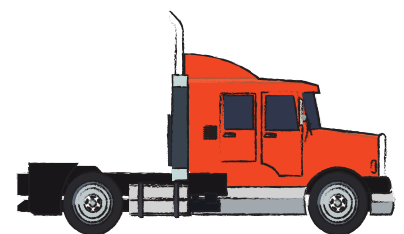
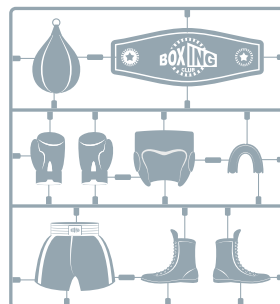
Segway into 4-H Models

Display one age appropriate model!

Learn how to assemble, paint, or finish a model kit.

Models could be from a purchased kit.

Finished product should not exceed 12"x12" dimensions.





Nature

Segway into 4-H Forestry, Geology, Soil & Water, Weather & Climate Science, Wildlife



Exhibit one of the following:

1. Take a walk outside, find items that you can use to create an art collage of nature
 2. Create a poster about a cycle that can be found outside. Examples: water cycle, life cycle, season cycle
 3. Create a "My Leaf Book" of leaves found around your home and places you travel to
- Additional Material: "My Leaf Book" provided

Photography

Segway into 4-H Photography



Exhibit the following on a poster according to the number of years in the project:

1. First Year - Display 5 prints of non-moving objects such as landscape, buildings, or scenery
2. Second Year - Showcase eight prints, including animals or people
3. Third Year - Show either ten prints of your choice or one 8"x10" matted print of your choice

Exhibit one of the following:

Remote Truck

Segway into 4-H Remote Truck

1. A poster or notebook on your favorite pulling truck model and why you selected this make and model
2. A poster identifying parts of a remote pulling truck
3. Work with a 4-H member to show a remote truck in the Mini Electric Truck class



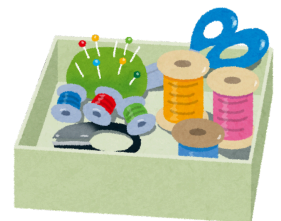
Sewing

Segway into 4-H Consumer Clothing, Fashion Revue, Sewing

Exhibit the following according to the number of years in the project:

1. First Year - A sewing kit - assemble tools and construct a pincushion (the tools do not need to be new)
2. Second Year - Exhibit a fringed placemat, or fringed neck scarf you have made
3. Third Year - Exhibit a cut-out pillow, throw pillow or wash cloth pillow. Pillow size should not exceed 20" x 20"

Additional Material: Sewing instructions included



Livestock Showmanship

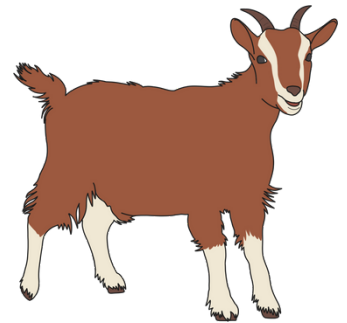
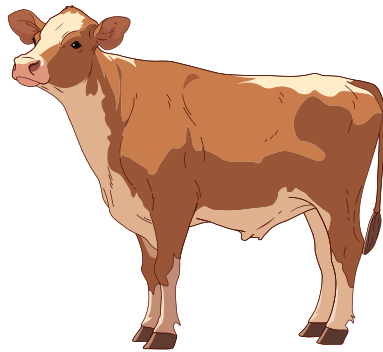
Segway into 4-H Livestock projects

Mini 4-Hers **cannot** show their own livestock due to liability reasons. Regular 4-H livestock go through several steps in order to show within the 4-H program legally and safely. It is highly recommended that the Mini 4-Her works with their mentor and the animal before fair.

Parents of Mini 4-H Members must sign a liability release before the Mini 4-H'er will be allowed to work with, care for or show an animal project. Mini 4-H Members may only show, work with, or care for animals over 300 pounds when they are assisted (adult has control of animal at all times) by a parent, legal guardian, or another adult designated in writing by parent or legal guardian.

***THE LIABILITY FORM IS FOUND AS THE LAST PAGE OF THIS BOOKLET.**

Beef



Goat

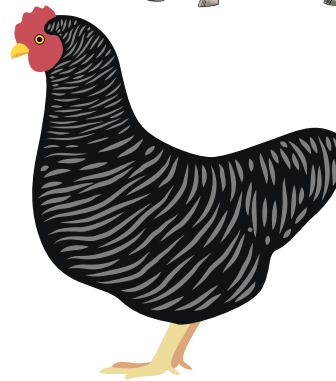


Horse & Pony

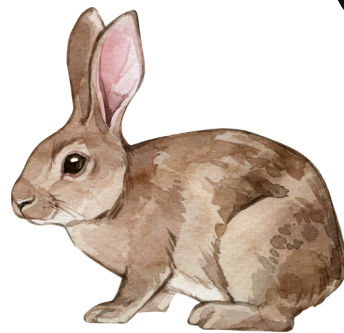
Llama & Alpaca



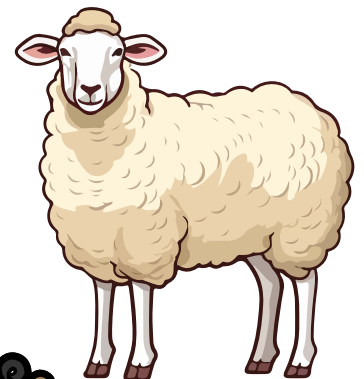
Poultry



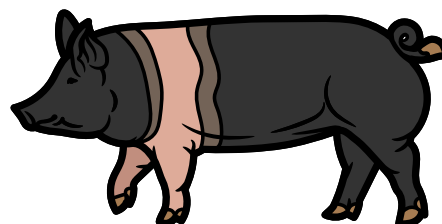
Rabbit



Sheep



Swine



Mini 4-H Liability Release Form

The safety and well being of our 4-H youth is of the utmost importance. Although kindergarten is specified as the time when a child may begin participation in some 4-H events and activities, parents are encouraged to take into consideration their child's physical and mental development before agreeing to let the child begin to show, work with, or care for animals. Each child matures at a different rate, and children in grades K-2 may still be too young to begin showing, working with, or caring for animals.

The Indiana 4-H Youth Development Program at Purdue University has agreed to allow Mini 4-H members in grades K-2, to participate in NON-COMPETITIVE animal projects subject to certain conditions. These conditions are specified below.

“Mini 4-H members, in grades K through 2, will be allowed to show, work with, or care for animal projects after their parent or legal guardian has signed a liability release. Mini 4-H members may independently show, work with, or care for animals that weigh 300 pounds or less. Mini 4-H members may only show, work with, or care for animals over 300 pounds when they are assisted by a parent, legal guardian, or another adult designated in writing by parent or legal guardian.” (*The word assisted means that the adult has control of the animal at all times.*) Mini 4-H members are not required to own the animals they participate with in Mini 4-H. All animals on exhibit should meet the regulations of the Indiana Board of Animal Health Requirements for Exhibition of Domestic Animals in Indiana and meet the vaccination requirements set by Indiana 4-H.

Mini 4-H members exhibiting horses must wear ASTM or SEI standard F1163 (or above) certified helmets whenever mounted. The parent/guardian is responsible to see that this specified headgear is properly fitted with the approved harness in place and fastened whenever a rider is mounted.

I understand that participating in 4-H activities can involve certain risks to my child. Those risks may include injury or harm, including, but not limited to, bodily injury, disability, exposure to COVID-19 and other viruses and or illnesses, and death. During virtual 4-H activities, I understand that program staff are not providing supervision for my child during the online program, and the Released Parties do not have control over the information available through the internet or other electronic data sources beyond that which is a part of the 4-H activity. On behalf of my child, I fully assume the inherent risks associated with my child participating in 4-H activities and assert that my child has chosen to participate in this program with my express approval. I hereby release and discharge Purdue University, The Trustees of Purdue University, the Carroll County Commissioners, the Carroll County Cooperative Extension Service, and each of their trustees, officers, appointees, agents, employees, and volunteers ("Released Parties") from all claims which my child or I might have for any injury or harm to my child, arising out of my child's participation in any activity related to the 4-H program, even if such injury or harm is caused by the negligence or fault of any of the Released Parties. I do not, however, release these individuals and entities from liability for intentional, willful or wanton acts and this release shall not be construed to include such acts.

Mini 4-H member's name

**Please return completed
form to the Carroll County
Extension office!**

Other Adult Designee to assist mini 4-H member - Print Name

Signature of Parent/Legal Guardian

Date

Signature of Parent/Legal Guardian

Date