

BOONE COUNTY  
EXTENSION  
HOMEMAKERS'  
OPEN SHOW

**July 23-26, 2024**



*Event held on the Boone County  
4-H Fairgrounds in conjunction with  
the Boone County 4-H Fair.*

1300 East 100 South  
Lebanon, IN 46052

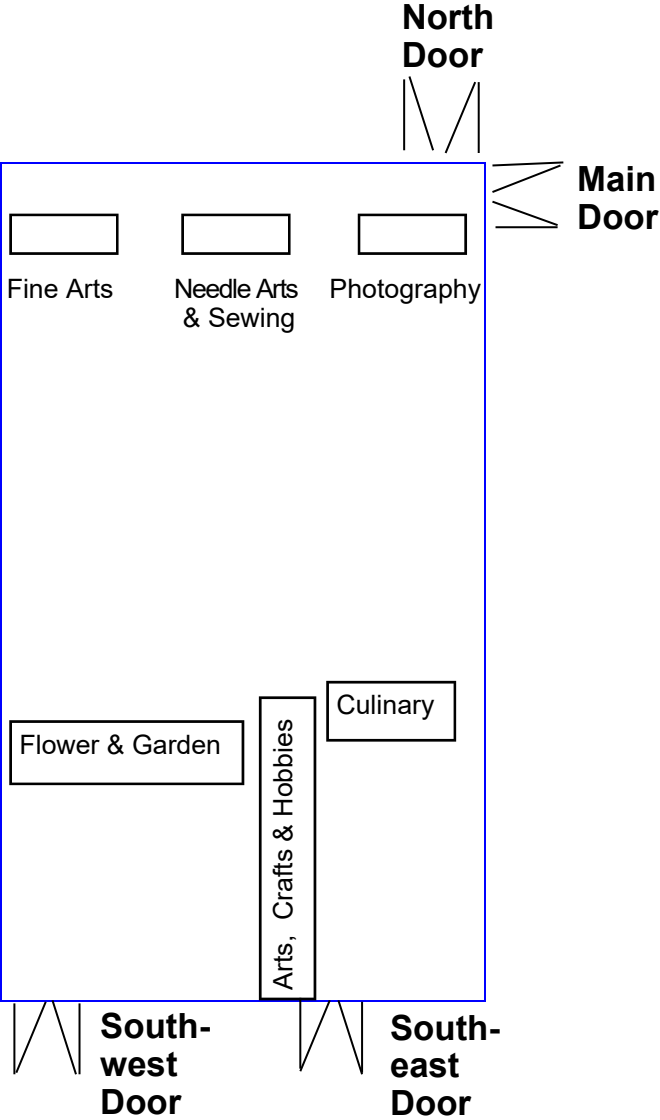
# TABLE OF CONTENTS

<u>PAGE</u>	<u>CONTENT</u>
2	EXHIBIT CHECK IN DIAGRAM
3	SAMPLE ENTRY TAG
4	MISSION STATEMENT
5	<b>DIRECTORS AND CHAIRMEN</b>
6	SCHEDULE OF EVENTS
7-8	GENERAL RULES
<b>8</b>	<b>PREMIUMS AND AWARDS</b>
9	<b>EXTENSION HOMEMAKERS BAKE AUCTION</b>
<b>10-12</b>	<b>CREATIVE COOKERY</b>
<b>13</b>	<b>PILLOW CASE CONTEST</b>
14-17	ARTS, CRAFTS & HOBBIES - ADULTS
18-20	ARTS, CRAFTS & HOBBIES - JUNIOR
21-30	CULINARY - ADULT
31-36	CULINARY - JUNIOR
37-44	FINE ARTS - ADULT, JUNIOR & CHILDREN
45-50	FLOWER & GARDEN - ADULT
51-53	FLOWER & GARDEN - JUNIOR
54-58	NEEDLE ARTS & SEWING - ADULT
59-60	NEEDLE ARTS & SEWING - JUNIOR
61	PHOTOGRAPHY - COMMITTEE & AWARDS
62	PHOTOGRAPHY - RULES
63	PHOTOGRAPHY - ADULT
64	PHOTOGRAPHY - JUNIOR
65-66	PROFESSIONAL <b>DIVISION</b> for <b>ALL DEPARTMENTS</b>

*Note that items in **RED** in this book are changes from the previous year.  
(online copy is only version in red)*

# Checking in Open Show Exhibits

## Boone County Farm Bureau Inc. Community Building



**FINE ARTS - PROFESSIONAL \***

P599. Up to 5 entries of any subject in any medium.

**FLOWER & GARDEN - PROFESSIONAL \***

P699. Up to 5 entries.

**NEEDLE ARTS & SEWING - PROFESSIONAL\***

P799. Up to 5 entries.

**PHOTOGRAPHY - PROFESSIONAL \***

P999. Up to 5 entries in any medium.

# SAMPLE

**ENTRY TAG**

Division - Cookie

Class # ..... 349

**Description**

Lemon Bar Cookie

Adults - White Tag

Junior & Children - Yellow Tag  
(up to age 18)

Exhibitor # ..... 000\*

Name ..... Jane Smith

\* If you do not have an exhibitor number, register at a director's table outside either the Main Door or Southeast Door

# Extension Homemakers Open Show 2024



**Mission Statement**  
Indiana Extension Homemakers Association  
To strengthen families through  
continuing education,  
leadership development,  
and volunteer community support.

Indiana Extension Homemakers celebrating **111** years  
Boone County Extension Homemakers celebrating **88** years

There are **129** Boone County Extension Homemakers in **11** clubs throughout the county. For more information about joining a club call the Purdue Extension Office at 765-482-0750.

## PROFESSIONAL DIVISION for All Departments Rules

1. Read the General Rules for individual exhibits on pages 7 & 8.
2. Date of creation must be provided.
3. Any article that received a ribbon in previous years may not be entered again.
4. Professional exhibitors must derive \$1,000 of his/her annual income from sales of and/or teaching his/her craft. Regardless of the date the piece was created, it must be entered as professional if rule #4 currently applies.
5. Professional class winners will be given ribbons indicating their placing. No money will be awarded.
6. Business cards may be attached after judging.

### ARTS, CRAFTS & HOBBIES - PROFESSIONAL \*

P299. Up to 5 entries

### CULINARY - PROFESSIONAL \*

Fancy Decorated Cakes  
Up to 5 total entries per exhibitor in Culinary  
May be on cake or form

1. Cakes, including decorations, not to exceed 36" high. The diameter of the cake board must not be larger than 26". No ornamental stands or plate allowed.
2. Cake forms may be used and must be constructed so that the item could be made in real cake or edible material. Real cake may be used. Forms and royal icing recipes may be obtained from cake decorating stores.
3. All decorations must be edible with the exception of the cake topper and wires and stamens used on gumpaste or royal icing flowers. Judging is based on the hand work and decorating abilities of the decorator.

P495. Candy (1/2 pound).

P496. Bridal Cake - Tiered or stacked.

P497. Cake for a special day—holiday, birthday, etc. Do not cut cake.

P498. Small individual cakes, cut from layer cake or cupcakes; different shaped, frosted, and decorated (submit 3)

P499. Novelty

## Photography - Youths

### MONOCHROME DIVISION - ANY CAMERA TYPE - YOUTHS \*

- 922. Action
- 923. Animals
- 924. Buildings/Architecture
- 925. Landscape, Seascape & Water
- 926. Nature—Flowers, insects, close-ups, etc.
- 927. People—Individuals or Groups, Any Pose
- 928. Photo Essay/Collage—Monochrome—Two or more photos on one board telling a story— Entries must conform to 4-H rules
  
- 930. Miscellaneous
- 931. Photo Essay/Collage—Two or more photos on one board

### NATURAL COLOR DIVISION - ANY CAMERA TYPE - YOUTHS \*

- 932. Action
- 933. Animals
- 934. Buildings/Architecture
- 935. Landscape, Seascape & Water
  
- 936. Nature—Flowers, insects, close-ups, etc.
- 937. People—Individuals or Groups, Any Pose
  
- 940. Miscellaneous
- 941. Photo Essay/Collage—Two or more photos on one board
  
- 977. Photo Essay/Collage—Two or more photos on one board. Entries must conform to 4-H rules.
- 978. Exhibitors with Disabilities—Youths

## DIRECTORS & CHAIRS

### DIRECTORS

Abby Worrell emmertabigail@gmail.com 765-336-4289

### ARTS, CRAFTS AND HOBBIES DEPARTMENT

Judy Bolinger, Chair 765-680-3062

### CULINARY DEPARTMENT

**OPEN**

### FINE ARTS DEPARTMENT

Kate Emmert, Chair 765-894-9350

### FLOWER & GARDEN DEPARTMENT

Colleen Hendricks, Co-Chair 765-894-1821

Karen Richards, Co-Chair 765-482-5333

### NEEDLE ARTS & SEWING DEPARTMENT

Lila Jones, Chair 765-894-3715

### PHOTOGRAPHY DEPARTMENT

Ed Cambra, Co-Chair 317-694-1272

Karen Niemeyer, Co-Chair 765-436-7518

### Open Show Special Events

#### Bake Auction

Bonnie Preston, Chair 317-448-8241

#### Creative Cookery

Debbie Kremer, Co-Chair 765-842-2370

Bev Ramsey, Co-Chair 317-769-6253 317-430-2125

#### Decorated Pillow Case Contest

Linda Fahrenbach, Chair 765-894-2123

## Schedule of Events

### Monday, July 1

4:00pm Deadline to turn in Creative Writing entries to Purdue Extension Office.

### Tuesday, July 23

4:00-7:00pm Check-in for Open Show exhibits in the Farm Bureau Inc. Community Building.  
*Arts, Crafts & Hobbies - Southeast door*  
*Culinary - Southeast door*  
*Fine Arts - Main door*  
*Flower & Garden - Southwest door*  
*Needle Arts & Sewing - Main door*  
*Photography - Main door*

4:00-7:00pm Check-in Decorated Pillow Case Contest –Main Door

### Wednesday, July 24

9:00-11:00am Check-in for Open Show exhibits in auditorium  
 11:00am EXHIBIT AREA (AUDITORIUM) WILL BE CLOSED FOR JUDGING  
 6:00pm Bake Auction in Dining Room of the Farm Bureau Inc. Community Building.  
 6:00pm Farm Bureau Inc. Community Building will re-open to view exhibits  
 8:00pm Boone County Farm Bureau Inc. Community Building closes

### Thursday, July 25

10:00am -  
 8:00pm Building open to view exhibits  
 10:00 am Check-in for Creative Cookery Dining Room -Farm Bureau Inc. Community Building.  
 10:30am Open Judging for Creative Cookery, Dining Room - Farm Bureau Inc. Community Building. Samples will be served to the public after judging.

### Friday, July 26

10:00am Boone County Farm Bureau Inc. Community Building opens  
 4:15pm Exhibit area closes  
 4:30 - 5:30pm Exhibit area re-opens to check out exhibits  
 5:30pm Photos of Sweepstakes winners taken in the auditorium

## Photography - Adult

### MONOCHROME DIVISION - ANY CAMERA TYPE – ADULT ONLY \*

- 901. Action
- 902. Animals
- 903. Buildings/Architecture
- 904. Landscape, Seascape & Water
- 905. Nature—Flowers, insects, close-ups, etc.
- 906. People—Individuals or Groups, Any Pose
  
- 909. Miscellaneous
- 910. Photo Essay/Collage—Two or more photos on one board

### NATURAL COLOR DIVISION - ANY CAMERA TYPE – ADULT ONLY \*

- 911. Action
- 912. Animals
- 913. Buildings/Architecture
- 914. Landscape, Seascape & Water
- 915. Nature—Flowers, insects, close-ups, etc.
- 916. People—People—Individuals or Groups, Any Pose
  
- 919. Miscellaneous
- 920. Photo Essay/Collage—Two or more photos on one board
  
- 968. Exhibitors with Disabilities—Adult
  
- 970. Open - Adult \*See Rule #10\*

## PHOTOGRAPHY DEPARTMENT

Adult: 19 years of age or older

Youth: age 18 and under

### Rules

1. Read the General Rules for individual exhibits on pages 7 & 8.
2. All entries must be original work of exhibitor.
3. More than one entry is allowed in each class.
4. Name of entrant, address, phone number, & title of work must be on back of work on top left side.
5. Photos should NOT be signed on the front.
6. Any photograph entered in a previous Open Show is ineligible.
7. Only one photograph per photographic mount board with the exception of Photo Essay/Collage.
8. Each photograph may be any size, but must be **PERMANENTLY** mounted on 16" x 20" photographic mount board or a board of similar thickness no more than 3/16" thick. Matting is optional but no hangers should be used. Masonite, corrugated card board, or thin poster board is not acceptable.  
Any photography that falls off its board will not be judged.
9. Prints in frames or under glass are not acceptable. Plastic coverings or slipcovers are permissible. Entries other than 16" x 20" will not be accepted except for 4-H photo essays previously entered. An exception to the size requirements will be made for 4-H photo. This will apply to the Youth class, and 4-H rules will be applicable.
10. It is recommended that photographs be matted and either shrink wrapped or encased in clear plastic sleeves in order to protect from possible scratching prior to or during display. Plastic sleeves may be obtained in the Purdue Extension Office.
11. Photos altered beyond retouching to eliminate dust and scratches, small adjustments of color, tone, sharpness, brightness or contrast, and cropping for space or composition will be entered in the Open category.

### Photography - All Ages BOONE COUNTY'S OWN DIVISION – ALL AGES \*

900. Must be structure, person, or location unique to Boone County. Color or Monochrome, any camera type. Identify subject and/or location.

## GENERAL RULES FOR ALL EXHIBITS

1. All classes are open to Boone County Extension Homemakers Club members or any resident of Boone County 19 years of age or older in Adult Classes. Boone County 4-H members and Boone County residents age 18 & under will be in Junior classes. (See rules for children in Fine Arts and Photography).
2. Tags for entries may be picked up at the Extension Office before the fair.
3. Pre-entry required for Creative Writing. (See Arts, Crafts and Hobbies.)
4. **CHECK IN. Entries will ONLY be received between 4:00–7:00pm on Tuesday night, July 23, & 9:00-11:00am on Wednesday morning, July 24. Exhibitor numbers required. New exhibitors must register for a number at the registration table located at the Main (East) door or the Southeast door. Prior exhibitors should bring previously issued numbers with them at registration.**
5. No entry fee will be charged.
6. **CHECK OUT. Entries are to be checked out on Friday night, July 26 between 4:30-5:30pm. All exhibits must be picked up along with ribbons and premiums at check out time or ribbon and premiums will be forfeited. Perishable exhibits will be disposed of at close of Open Show. Anyone who cannot personally be there to pick up his exhibits should make arrangements with someone else to pick up exhibits. The person picking up the exhibits must have authorization from the owner of the exhibit. The Extension Homemakers Open Show Committee will not be responsible for articles left after check out. Anything left after August 1 will be disposed of and the open show committee will not be responsible for the loss.**
7. Classes for individuals will be provided in six departments – Arts, Crafts & Hobbies; Culinary; Fine Arts; Flower & Garden; Needle Arts & Sewing; and Photography.
8. Any article left unattended before being officially entered will not be accepted for exhibit.
9. The department chairman reserves the right to determine into what class an article belongs.
10. If there is no class for an article, it may not be entered except in the "Do Your Own Thing" class.
11. If there is a class for an item, it may not be entered under miscellaneous or in another department.
12. Precautions will be taken to insure the safety of the articles entered, but in no case will Boone County Extension Homemakers be responsible for the loss or damage of any article.
13. Articles should arrive ready to display. Colorless plastic food wrap or zip-up plastic bags may be used to cover articles..



## GENERAL RULES FOR ALL EXHIBITS—Continued

14. Any article that received a ribbon in previous years may not be entered again.
15. Blue, red and white ribbons will be given as merited, meaning there can be any number of ribbons in a given class. Sweepstakes, Champions, and Reserve Champions will be chosen as merited from the blue ribbon winners and the blue ribbon will be removed from these three exhibits.
  - A. An asterisk denotes a division where sweepstakes may be given.
  - B. Each exhibit will receive only one ribbon and one cash award with the exception of Rule C as follows.
  - C. All special, memorial and committee awards are in addition to the ribbons and cash awards.
16. If no competition exists and article is unworthy of first place, it may be awarded second or third place or none. Awards will be given at judge's discretion. All awards may not be given.
17. Originality may be considered in final places in all departments.
18. Functioning guns, knives, and other weapons will not be accepted.
19. All articles must be handmade by exhibitor except quilts 25 years old and older, antiques entered in "Do Your Own Thing", and crafts made with assistance.
20. Collections, posters, and 4-H project notebooks are not appropriate exhibits.
21. "Amateur" and "Professional" will be classed separately. Professional classes will be designated with a "P" preceding class number. Professional exhibitors derive \$1000 of annual income from sales of and/or teaching his/her crafts.
22. Professional class winners will be given ribbons. No money will be awarded.
23. Any exhibitor removing an exhibit before the specified release time will not be permitted to exhibit the following year. Ribbons and prize money will be forfeited.
24. There may be some changes made in the listed special and memorial awards. Any additions will be posted in the display area during the Open Show.

## PREMIUMS & AWARDS

Ribbons - All Classes - 1st, 2nd, and 3rd as merited. Each division Champion, Reserve Champion, and Sweepstakes will be chosen among the blues. Only one ribbon per exhibit will be given with the exception of special awards.

Premiums - All Classes - 1st-\$1.00; 2nd-50 cents  
 \$5 - Division Sweepstakes  
 \$3 - Division Champion  
 \$2 - Division Reserve Champion

Only one cash award per exhibit will be given with the exception of special and memorial awards. Gold stars indicate a blue placing that received special honor; no additional cash award is given for a gold star.

\* Asterisk by division indicates Sweepstakes, Champions, and Reserve Champions may be given.

\*\* Double asterisk indicates the sponsoring group is Boone County Extension Homemakers.

## PHOTOGRAPHY DEPARTMENT

### Committee & Awards

317-694-1272 - Co-Chair - Ed Cambra

765-436-7518 - Co-Chair - Karen Niemeyer

### Photography Memorial Award (Open to Adults and Youths)

#	Item	Given By	In Memory of	Amount
*	Best photography	Sugar Creek E.H.**	Virginia Hart	\$10
*	Creativity in Photography	Allyson and Andrew Gutwein	Aubrey Conard Gutwein	\$10

\* see category/division/class number

### Special Award (Open to Adults and Youths)

#	Item	Given By	Amount
*	Favorite Photography Judge's Choice	Karen Niemeyer	\$10
900	Photography Boone County's Own	Karen Niemeyer	\$10

\* see category/division/class number

### Photography Memorial Award (Open to Youths Only)

#	Item	Given By	In Memory of	Amount
*	Photography- Judge's Choice	Tim & Sandra Townsend	John Hershman	\$10
*	Creativity in Photography	Allyson and Andrew Gutwein	Aubrey Conard Gutwein	\$10

\* see category/division/class number

## NEEDLE ARTS & SEWING DEPARTMENT-JUNIOR

age 18 and under

### Rules

1. 4-H Items Accepted
2. Read the General Rules for individual exhibits on pages 7 & 8.
3. All garments and articles must have been made by the exhibitor and must not have been exhibited in a prior Boone County Open Show.
4. **All garments are to be on hangers**—children's garments on small hangers.
5. All articles are to be clean and in good condition.
6. Other needlecraft garments and articles will be judged on general appearance, workmanship, color combination, smartness and originality of design, suitability of article for the purpose and following the requirements.
7. All pictures must be ready to hang (with dustcover on back) with flat hangers that are sufficiently substantial to hold weight of object.
8. Each exhibitor should determine class for entry.
9. Items may be accepted but will be dropped a placing if it does not meet stated rules.
10. List age on entry tag.

#### HANDWORK DIVISION - JUNIOR \*

730. Any hand worked item, any size or medium, including: knitting, crocheting, crewel, needlepoint, canvas, counted thread, fleece, felting, etc. No painting or stenciling.  
No limit.

#### SEWING DIVISION - JUNIOR \*

731. Any single item or ensemble, which includes: Dress, top, separates, sportswear, suit, coat, child's wear, pant, evening wear, miscellaneous. No Limit.

#### EXHIBITORS WITH DISABILITIES DIVISION- JUNIOR \*

Up to 4 entries per exhibitors

732. Any Needle Arts item fitting into one of the subject divisions in the department.

## Extension Homemakers Bake Auction

Baked and other products exhibited in the Extension Homemakers culinary department will be sold at public auction on Wednesday evening, (during the fair), starting at 6:00 p.m. in the Dining Room of the Boone County Farm Bureau Inc. Community Building.

Proceeds from the sale will be used to pay premiums and expenses for the Open Show and other educational activities of the Boone County Extension Homemakers program.

### THANK YOU 2023 BAKE AUCTION BUYERS

Lebanon Pizza King (Walter Burtner)

Wanda Garst

Thorntown Veterinary Clinic

Staton Contractor (Phil Staton)

Boone County 4-H Council

Darlene Summers

Home National Bank (Dan Fry)

Kim Beyer Insurance

Boone County Resource Recovery (John Bankert)

Starkey Farms (Elle Starkey)

Dickerson & Kenna Concessions

Sue Spangler

\*and other anonymous individuals

**2024 Creative Cookery Contest Using Peppermint**  
Sponsored By Boone County Extension Homemakers

**Debbie Kremer, Co-Chair**      765-842-2370  
**Bev Ramsey, Co-Chair**      317-769-6253 and 317-430-2125



**Thursday, July 25, 2024**

**Dining Room of Boone County Farm Bureau Inc. Community Building**

**10:00– 10:30am – Check in**  
**10:30am – Judging**

1. This contest is open to Boone County residents and Boone County Extension Homemaker Club members.
2. The product may be made from scratch or a box mix may be part of the ingredients.
3. All entries must be accompanied by the recipe which must be printed or typed on one side of a paper WITHOUT exhibitor's name. All recipes will become the property of BCEH.
4. Each entry should be wrapped in colorless plastic food wrap or zip-up plastic bag which will allow easy access for judge's inspection. The whole product must be entered to be judged.
5. Each entry **must** contain **Peppermint** in the baked part of the article or in the candy.
6. Persons may enter only one entry per class.
7. There will be 7 classes of entry:
 

Bread (1 loaf either quick or yeast)	Cake
Candy	Cookies (6)
Dessert	Muffins (6)
Pie (Must follow Food Safety Policy in rule #8)	

8. Purdue Extension Food Safety Policy (revised 10/2022):

*For Food Competitions: Fillings, frostings, glazes, and meringues are not permitted to contain cream cheese, sour cream, heavy cream, or whipped cream if they are not fully cooked/baked. These items are allowed as ingredients in food products IF the final product is cooked/baked. Additionally, raw milk, raw milk products or uncooked eggs/egg whites are not permitted. Eggs/egg whites that have been cooked to 160° F (i.e. pasteurized or includ-*

**Needle Arts & Sewing - Junior Committee & Awards**

**Memorial Awards**

#	Item	Given By	In Memory of	Amount
***	Sewing—best from junior division. First time winner only. Previous winners of this award are not eligible to win	Homemakers Union E.H.**	Barbara Shoemaker	Sewing Scissors
***	Handwork	Marionettes E.H**	Ann Hershman	\$15

\*\*\* see category/division/class number

**Special Awards**

#	Item	Given By	Amount
	Judge's Choice (Quilted Item)	Quilts Plus	\$20

**SCULPTED - STITCHED & STUFFED DIVISION \***

Any animal, doll or figure, sculpted, stitched and stuffed of fabric, fur or leather. **NO** porcelain, ceramic or papier mach'e

721. Any Doll, figure or animal with or without costume. No Limit

**MISCELLANEOUS NEEDLECRAFT DIVISION - ADULT \***

722. Any item that does not fit into any other needle craft division. Limit of 5 items per exhibitor.

**SEWING GARMENT DIVISION - ADULT \***

723. Any single garment or ensemble, which includes: Dress, top, separates, sports wear, suit, coat, infant to size 2, child, pant, evening wear, wedding, miscellaneous. Limit of 5 items or ensembles per exhibitor.

**SEWING MISCELLANEOUS DIVISION - ADULT \***

724. Any sewing item, which is not a garment, such as purse, bag, book, or slip cover. Limit of 5 items per exhibitor.

**FABRIC ART DIVISION - ADULT \***

725. Any embellished article, may be but does not have to be worn, that has quilting, crochet, tatting, embroidery, hand-home dyed, etc. application of embellishments must be needle worked not glued.

**EXHIBITORS WITH DISABILITIES DIVISION- ADULT \***

Up to 4 entries per exhibitors

726. Any Needle Arts item fitting into one of the subject divisions in the department.

*Foods should be transported to the competition in a way that minimizes contamination and maintains the quality of the food (i.e. foods that are judged as frozen should remain frozen at all times).*

*Recipes must be provided that identifies all ingredients that were used in each part of the product. Any ingredient that could be a potential allergen must be clearly identified. Potential food allergens include, but are not limited to, milk, eggs, peanuts, tree nuts, fish, crustacean shellfish, wheat, soy and sesame. Each food product must be labeled with the following information:*

*\* Name*

*\* Date the food product was made*

*Contestants should carefully wash their hands and make sure that their hands do not have any open cuts before preparing foods. If cuts are present, the wound should be bandaged and a single use food service glove worn on the hand during all stages of food production. Contestants should not be preparing food exhibits for competition within 48 hours of recovering from illness. People experiencing symptoms of vomiting, diarrhea, fever, and/or jaundice should not be allowed to prepare food.*

*Judges and individuals who will consume products from county and/or state competitions should be informed that they are at risk for foodborne illness since the established policy cannot guarantee that an entry has been properly prepared or handled before, during or following the competition. The food products for competitions are home produced and processed and the production area is not inspected by the Indiana State Department of Health. Tasting of a food product is solely at the discretion of the judge and consumers. Judges are **NOT** to taste any home preserved foods such as low-acid or acidified foods like green beans, tomatoes or tomato products, jams/jellies/fruit preserves or fermented products produced in the home.*

9. Blue, red, or white placing ribbons will be awarded according to quality of the entry. A Champion will be selected from each class with a Sweepstakes selected from the Champions.
10. A portion of each champion entry will be kept for display; the Remainder may be sampled after judging concludes.
11. \$5 will be awarded to the Champion in each class. **\$20 will be awarded to a Sweepstakes winner selected from the seven class Champions.**

## CRITERIA FOR JUDGING

1. The total appearance of the product will be taken into consideration, including uniform color, even shape, and pleasant eye appeal.
2. **Peppermint** must be present in the baked part of the product or in the candy, giving it a well blended characteristic flavor.
3. The product should contain internal quality including moist, tender crumb, and a fine texture.

**Next year's Creative Cookery flavor will be chosen by this year's contestants and announced on **Thursday, July 25, 2024****

### QUILT - LARGE DIVISION - ADULT \*

**Any quilt larger than 3600 square inches (i.e. 60" x 60")**

712. Any quilt larger than 3600 square inches, which includes: pieced, appliquéd, embroidered, kit, wall-hanging (ready to hang with rod, clips, or pocket). May be hand or machine pieced but is machine quilted. **All work is done by exhibitor.** No limit.
713. Team quilt - Pieced by one person, group or organization and/or quilted by another person, group or organization. May be hand or machine pieced and hand or machine quilted. **Must provide a paragraph describing which individual did the piecing, sewing, and quilting.** No limit.
714. Any beginner quilt. Limit 1 per exhibitor.

### QUILT - HAND QUILTED DIVISION - ADULT \*

715. a. Any quilt, any size, may be machine or hand pieced but quilted only by hand. Total quilt must be product of a single exhibitor. No limit.  
b. Any beginner quilt.
716. Team quilt - Any quilt, any size, pieced by one person, group or organization and/or quilted by another person, group or organization. May be hand or machine pieced, but quilted only by hand. **Must provide a paragraph describing which individuals did the piecing, sewing, and quilting.** No limit.

### QUILT - SMALL DIVISION - ADULT \*

**Any quilt 3600 square inches or less (i.e. 60"x 60")**

717. Any quilt 3600 square inches or less which includes: pieced, appliquéd, embroidered, kit, baby or crib quilt, wall-hanging (ready to hang with rod, clips or pocket). May be hand or machine pieced but is machine quilted. **All work is done by exhibitor.** No limit.
718. Team quilt - Pieced by one person, group or organization and/or quilted by another person, group or organization. May be hand or machine pieced and hand or machine quilted. **Must provide a paragraph describing which individuals did the piecing, sewing, and quilting.** No limit.
719. Any beginner quilt. Limit 1 per exhibitor.

### QUILT BUT KNOT DIVISION - ADULT \*

720. Any patchwork, appliqué, knotted or comforter item, any size, machine or hand pieced. **All work must be done by the exhibitor.** No quilting. No limit.

**CROCHETED DIVISION - ADULT \***

704. a. Large item, such as a garment or afghan  
b. Small or simple item. No Limit.

**EMBROIDERY DIVISION - ADULT \***

705. Any embroidery item, such as pillow case, scarf, tablecloth, crewel, candlewicking, etc. No Limit.

**FELTING DIVISION - ADULT \***

706. Any felted item, any technique: washed, needle, etc. No Limit.

**FLEECE DIVISION - ADULT \***

707. Any fleece item, any size, any pattern. No Limit.

**HOME SPUN HAND DONE DIVISION - ADULT \***

708. a. Skein of handspun, dyed or undyed. No Limit.  
b. Any item knitted, crocheted, **woven**, or felted using fiber. No commercial yarn permitted. Yarn used may or may not be spun by exhibitor.  
c. Hand dyed - may be batts, or yarn dyed before or after spinning.

**KNITTED DIVISION - ADULT \***

709. a. Large item (garment, afghan, etc.)  
b. Small or simple item. No Limit.  
**C. Items knitted by machine**

**PILLOW DIVISION - ADULT \***

710. Any pillow, any thread or fabric medium. No painting or stenciling. No Limit.

**QUILT - ANTIQUE DIVISION - ADULT**

**Does not have to be made by exhibitor but must have story depicting the quilt.  
Must be at least 25 years or older.**

711. Any pieced or appliquéd quilt, spread, or comforter

**DECORATED PILLOW CASE CONTEST**

**Sponsored by the Boone County Extension Homemakers**

*Pillows and Pillow Cases will be Donated  
to the Boone County Women's Shelter*

**Check-in Tuesday Evening July 23 4:00pm - 7:00pm and  
Wednesday morning July 24 9:00am - 11:00am  
Boone County Farm Bureau Inc. Community Building**

**Chair: Linda Fahrenbach – 765-894-2123**

1. This contest is open to Boone County residents, Boone County Extension Homemakers, and Boone County 4-H members.
2. Each contestant **must** donate a new standard size pillow in order to enter his/her pillow case in the competition. All pillows and pillow cases will be given to the Boone County Women's Shelter.
3. The pillow case may be handmade or store-bought and **must be a standard size pillow case**.
4. Embroidery, tatting, fabric applique, pieced, quilted, crochet or other techniques may be used but must have been created by the contestant.
5. Pillow case and decoration **must be machine washable**.
6. Each contestant may enter one pillow case.
7. There will be an Adult Class (**19** years of age or older) and a Junior Class (age **18** and under).
8. Prize money will be awarded for *Most Creative* as follows:  
Adult: \$15.00 First Prize Awarded by Merri Mixers Extension Homemakers Club  
Adult: \$10.00 Second Prize Awarded by Sugar Creek Extension Homemakers Club  
in memory of 62-year member Kathleen Merson  
Junior: \$15.00 First Prize Awarded by Kathy Staton  
Junior: \$10.00 Second Prize - Anonymous Sponsor
9. Winners in each class will be chosen by the Boone County Extension Homemakers president and past-president.
10. Winners will be announced at **7:00pm. Wednesday, July 24, 2023.**
11. All entered pillow cases will be donated to the Boone County Women's Shelter and will not be returned to the contestant.

We welcome pillows for the Boone County Women's Shelter anytime during our Open Show and no pillow case is required. But to enter the decorated Pillow Case Contest, a donated standard size pillow is required. **All pillows and pillow cases must be new.**

**Arts, Crafts & Hobbies - Adult  
Committee & Awards**

Suzy Rich  
Donna Adams  
Pam Shelburne  
Paulette Thompson

Chair - Judy Bolinger - 765-680-3062  
Donna Padgett  
Debbie Kremer  
Patty Nichols

Nancy Viehe  
Herb Bolinger  
Nancy Crouch

**Memorial Awards  
Special Awards**

#	Item	Given By	In Memory of	Amount
1	Decorative painted, stencil, or tole item. - Judges Favorite	Village Home-makers EH**	Debbie Conwell	\$10
2	Sweatshirt or T-Shirt – Chosen from REMAINING blue ribbon winners AF-TER reserve, champion and sweepstakes have been awarded in Hobbies - Judge's Choice	Boone County Crafters EH**	Janis Lawson	\$5
3	Woodworking- Judges Favorite	Marionettes E.H.**	Jim Pauley	\$15
4	Greeting Cards - Judge's Choice	Boone County Crafters EH**	Wilma Fairfield	\$5

#	Item	Given By	Amount
5	Antiques - Judge's Choice	Thorntown Heritage Museum	\$5
6	Christmas Craft —Judge's Choice	Friends of Thorntown Public Library	\$5
7	Scrapbooking— "Capturing Memories" —Judge's Choice	Thorntown Scrapbookers	\$5
8	Exhibitors with Disabilities— Judge's Choice—for overall creative effort	Andrew & Allyson Gutwein	\$5
9	Recycling - Judges Choice	Marionettes E.H.**	\$15
10	Creativity in Jewelry Creations	Midwest Jewelers	\$10

**Committee's Choice Awards**

11	Exhibitors with Disabilities— committee members choice	Andrew & Allyson Gutwein	\$5
----	--	--------------------------	-----

**NEEDLE ARTS & SEWING DEPARTMENT - ADULT  
19 years of age or older  
Rules**

1. Read the General Rules for individual exhibits on pages 7 & 8.
2. All garments and articles must have been made by the exhibitor and must not have been exhibited in a prior Boone County Open Show with the exception of the 25 to 40 year old quilts and quilts over 40 years old and antique bed spreads.
3. All **garments are to be on hangers**-children's garments on small hangers.
4. All Articles are to be clean and in good condition.
5. Quilts will be judged on workmanship, quality of material, harmony of color & condition.
6. Other needlecraft garments and articles will be judged on general appearance, workmanship, color combination, smartness and originality of design, suitability of article for the purpose and following the requirements.
7. All pictures must be ready to hang with flat hangers that are sufficiently substantial to hold weight of object.
8. Each exhibitor should determine class for entry.
9. Exhibitor's items must be different style or pattern, not just different fabric or multiples of a set. **Sets should be entered as one item.**
10. Items may be accepted but will be dropped a placing if it does not meet stated rules.
11. A story or description of an article on a separate piece of paper (not the entry tag) is a good idea for any exhibit. It helps answer judge's questions.

**SKILLED CARE / ASSISTED LIVING DIVISION -ADULT \***

700. Any item or set. Limit of 5 entries per exhibitor.

**CANVAS DIVISION -ADULT \***

701. Any canvas item, which includes: Swedish darning, needlepoint, plastic, rug punch, hooking, needle-punch, latch hook etc. No Limit.

**CHRISTMAS /HOLIDAY DIVISION - ADULT \***

702. Any Christmas or holiday item, which includes: stocking, tree skirt, ornament, pillow, ready to hang picture, pieced item, or any needlecraft medium. No painting or stenciling. No Limit.

**COUNTED THREAD TECHNIQUES DIVISION - ADULT \***

703. Any counted thread item - any size or thread count, which includes: framed ready to hang picture, afghan, wall hanging, beaded or embellished item on paper or fabric, miscellaneous. No Limit.



## Needle Arts & Sewing - Adult Committee & Awards

Lila Jones - Chair - 765-894-3715  
Margaret Carter

### Memorial Awards

#	Item	Given By	In Memory of	Amount
*	Crochet	Jeff & Georgi Kaser Family	Betty Spoor	\$10
*	Quilt – Best baby quilt	Hoosier Heritage Quilt Guild	Rosemary Peterman	\$15
*	Quilt – A traditional Design in a quilt, banner, clothing or wall hanging. May not be an antique quilt.	Hoosier Heritage Quilt Guild	Jenny Lenz	\$15
*	Quilt – An innovative design for a quilt, banner, garment or wall hanging. May not be an antique quilt.	Hoosier Heritage Quilt Guild	Alysse Marshall	\$15
*	Embroidery	Hoosier Heritage Quilt Guild	Carolyn A. Green	\$10
*	Crocheting a small item	Perry Homemakers Plus E.H.**	Sandra McCormack	\$10
*	Quilt - Flower, Farm or Garden Theme	Perry Homemakers Plus E.H.**	Deloris Shelburne	\$10

\*see category/division/class number

### Special Awards

#	Item	Given By	Amount
*	Counted Cross Stitch	Kathy Staton - The Old Barn	\$10
*	Needlecraft – sewing division	Sugar Creek E.H.**	\$10
*	Quilt – Miniature Quilt	Hoosier Heritage Quilt Guild	\$15
*	Quilt – Queen’s Choice - Favorite Quilt Award chosen by the 4-H Queen	Sugar Creek E.H.**	\$10
*	Holiday	Santa	\$10
*	Knitted	Kathy Staton	\$10
*	Handspun Yarn or Hand Dyed Fiber	Knit Spin Farm	\$10
712 & 717	Judge’s Choice (Machine Quilt)	Quilts Plus	\$20

\*see category/division/class number

## ARTS, CRAFTS & HOBBIES DEPARTMENT - ADULT 19 years of age or older Rules

**CONTINUED THIS YEAR:**

**No limit on number of entries. No limit on size of any entries.**

1. Read the General Rules for individual exhibits on pages 7 & 8.
2. Rules must be followed as stated in book or ribbon award will be reduced and item will not be considered for top award.
3. All articles must be handmade by the exhibitor within the past 3 years
4. All flowers used in this department must be dried or artificial.
5. Specify whether item is kit or original design.
6. All items intended for hanging during normal use must be ready to hang with hangers that are sufficiently substantial to hold weight of object. (Entries will be dropped one placing if they do not meet specified rules.)
7. Collections such as rocks, shells, baseball cards are not acceptable exhibits.
8. Functioning guns, knives and other weapons will not be accepted.
9. "Do Your Own Thing" exhibits may have some parts not handmade by exhibitor.

### CERAMIC, CHINA & PORCELAIN DIVISION - ADULT\*

101. Any ceramic, China or porcelain item which may or may not include decals, any finish or hand painting.

### CHRISTMAS DIVISION - ADULT\*

105. Any Christmas themed item such as an ornament, wreath, decoration, figure and so forth.

### CREATIVE WRITING DIVISION - ADULT\*

All entries must be the original work of the exhibitor.  
Entries must be turned into the Extension Office on or before **Monday, July 1, 2024**  
**DO NOT WRITE YOUR NAME ON THE ENTRY.** Write your name and exhibitor # on an entry tag or a post-a-note attached to entry. If first time to enter, please include your address and phone number.

110. Letter/Note (emphasis on penmanship)  
111. Poetry  
112. Short Story (up to 5 pages typed and double spaced)

### DECORATIVE PAINTING, STENCIL & TOLE PAINTING DIVISION - ADULT\*

113. Any item with decorative painting, stencil work or Toile painting



### HOBBIES DIVISION - ADULT\*

- 116. Basketry (woven with natural materials)
- 117. Decorated clothing (any item decorated with no sewing)
- 118. Digital Photo Books
- 119. Gourd Art
- 120. Greeting Cards - any medium
- 121. Handmade Jewelry
- 122. Leather Work - Handmade by exhibitor
- 123. Pottery—indicate if made on a wheel or hand molded
- 124. Miscellaneous

### HOME DECORATING & ACCESSORIES DIVISION - ADULT\*

- 128. Flower arrangement - no fresh flowers
- 129. Garden Art
- 130. Picture or Wall Hanging
- 131. Seasonal decoration (other than Christmas)
- 132. Wreath
- 133. Miscellaneous

### RECYCLING DIVISION - ADULT\*

**A short description of material used in item must be written and attached to the item (not written on the tag). Item's placing will be counted down if not included.**

- 135. Any item made primarily from recycled materials

### SCRAPBOOKS DIVISION - ADULT\*

Scrapbooks will be opened and handled; page protectors are recommended.

- 136. Any scrapbook – special subject: **Capturing Memories**
- 137. Any scrapbook – subject other than the special subject.

Future scrapbooking subjects: **2025- Life's Adventures & Moments**  
**2026 - Precious Memories**

### HOUSEPLANT/OUTDOOR DIVISION - JUNIOR \*

**No commercial shine on plant**

**Maximum diameter of pots 16" from outside of pot, plant foliage not to exceed 19"  
See Adult Rules for planter and plant height**

- 673. Houseplant – specify name of plant
  - A. Flowering
  - B. Non flowering
- 674. Planter – specify name of plants
  - A. Indoor
    - 1. Multiple
    - 2. Single
  - B. Outdoor
    - 1. Multiple
    - 2. Single
  - C. Indoor/Outdoor
    - 1. Terrarium
    - 2. Fairy Garden
  - D. Miscellaneous

### GARDENING DIVISION - JUNIOR \*

**All entries exhibited on paper plates supplied by exhibitor unless specified otherwise. Potted herbs or plants will be judged in the Houseplant / Outdoor Division.**

- 675. Broccoli – 1 stalk
- 676. Cabbage – Best head on plate (leave on 3 or 4 leaves)
- 677. Cucumber – Plate of 3
- 678. Green Beans – Plate of 20 beans
- 679. Herbs – 5 stems of same variety--must be displayed in container of water-- up to entries per exhibitor
- 680. Onions – Plate of 5
- 681. Peppers – Plate of 3
  - A. Sweet Bell (up to 3 entries per exhibitor)
  - B. Hot (up to 3 entries per exhibitor)
  - C. Non-Bell (up to 3 entries per exhibitor)
- 682. Potatoes – Plate of 5
- 683. Squash – 1 on a plate
  - A. Acorn
  - B. Butternut
  - C. Crookneck
  - D. Zucchini
  - E. Other
- 684. Sweet Corn – Plate of 3, in husks
- 685. Tomatoes – Plate of 5 ripe or green
- 686. Miscellaneous - up to 3 entries per exhibitor
- 687. Weird Vegetable, Fruit or Gourd— A vegetable, fruit, or gourd that has Naturally grown into a familiar or unusual shape. No vegetable that has been grown in a mold or manipulated will be accepted.

### EXHIBITORS WITH DISABILITIES DIVISION - JUNIOR \*

Up to 4 entries per exhibitor.

- 688. Any item fitting into one of the subject divisions in the department.

**ARTISTIC DESIGN DIVISION - JUNIOR \***

- 654. "THUMBELINA" - Arrangement of 6 inches or less height and width.
- 655. "GRADE SCHOOL" - Arrangement of primary colors.
- 656. "ROADSIDE TREASURES" - Things growing or found around/in roadsides.
- 657. "SHOOTING STARS" - Arrangement of red, white & blue fresh flowers.
- 658. "OLD FASHION GARDEN" - Arrangement of fresh flowers.

**HORTICULTURE DIVISION - JUNIOR \*  
(with foliage attached)**

- 659. Blackeyed Susan - 3 stems
- 660. Blooming Bush - 1 stem
- 661. Coneflower - 3 stems
- 662. Daisy – 3 Blooms
- 663. Gladiolus - 1 spike (one entry only - any color)
- 664. Lilies
  - A. Day lilies -- 1 spike (up to three entries--different colors)
  - B. Tiger lilies – 1 spike
  - C. Other – 1 spike
- 665. Marigolds (one color)
  - A. Dwarf – double – 3 stems with one bloom on each stem.
  - B. Dwarf single - 3 stems with one bloom on each stem.
  - C. Hybrid – red and gold – 3 stems with one bloom on each stem.
  - D. Hybrid – tall double – 3 stems with one bloom on each stem.
- 666. Pansies - 3 blooms
- 667. Petunias
  - A. Double - 3 stems (with one or more blooms on each stem)
  - B. Single - 3 stems (with one or more blooms on each stem)
- 668. Roses - 1 bloom (one entry only - any color or variety)
- 669. Snapdragons 3 spikes
- 670. Sunflower - 1 stem
- 671. Zinnias (one color)
  - A. Giant flower, 4 inches and over - 1 bloom
  - B. Medium flower, 2 inches to 4 inches - 1 bloom
  - C. Mexican or Persian Carpet - 3 blooms
  - D. Small flower, under 2 inches - 3 blooms
- 672. Miscellaneous - up to 3 entries per exhibitor

**WOODWORKING DIVISION - ADULT\***

Please specify if built or refinished on entry tag

- 138. Any wood item built, created, carved, etc. by the exhibitor
- 139. Any prebuilt wood item refinished in any medium by exhibitor

**ANTIQUES DIVISION - ADULT\***

We are not defining "Antique" by strict rules (age requirement), but more for the special interest of something from the past that you can share with others. It can be called "antique, vintage or old" to be entered. **Attach a story about your entry separate from the entry tag.**

- 143. Any antique item.

**EXHIBITORS LIVING IN ASSISTED LIVING AND/OR SKILLED CARE DIVISION - ADULT\***

- 144. Any Arts, Crafts or Hobbies item fitting into one of the subject divisions in the department.

**EXHIBITORS WHO "DO YOUR OWN THING" DIVISION - ADULT\***

- 145. Any Arts, Crafts or Hobbies item that does not fit into one of the subject divisions.
- 146. Any Arts, Crafts or Hobbies item that does not fit into one of the subject divisions and original design is done by the exhibitor but created with assistance.

**EXHIBITORS WITH DISABILITIES DIVISION - ADULT\***

- 147. Any Arts, Crafts or Hobbies item fitting into one of the subject divisions in the department.

**EXHIBITORS WORKING AS A TEAM DIVISION - ADULT\***

- 148. Any Arts, Crafts or Hobbies item fitting into one of the subject divisions in the department. Item is created by 2 or more people working together.

**Arts, Crafts & Hobbies - Junior  
Committee & Awards**

Chair - Judy Bolinger - 317-769-6298

Suzy Rich	Donna Padgett	Nancy Viehe
Donna Adams	Debbie Kremer	Herb Bolinger
Pam Shelburne	Patty Nichols	Paulette Thompson
Nancy Crouch		

**Memorial Awards**

#	Item	Given By	In Memory of	Amount
12	Craft item judged on originality, creativity, and neatness. No kits. Judge's choice from all entries	Gleaners E.H.**	Michele Bokash	\$5

**Special Awards**

#	Item	Given By	Amount
13	Scrapbooking— "Capturing Memories" Judge's Choice	Thorntown Scrapbookers	\$5
14	Exhibitors with Disabilities Judge's choice for overall creative effort	Andrew & Allyson Gutwein	\$5
15	Recycling—Judges Choice	Marionettes E.H.**	\$15
16	Creativity in Jewelry Creations	Midwest Jewelers	\$10
17	An original Junior Lego Exhibit. No kits will be considered for this awards. Judges Choice		\$5

**Committee's Choice**

#	Item	Given By	Amount
18	Exhibitors With Disabilities Arts, Crafts & Hobbies committee members choice	Andrew & Allyson Gutwein	\$5

**FLOWER & GARDEN DEPARTMENT - JUNIOR  
18 years old & under**

**Committee & Awards**

	765-894-1821 - Co-Chair - Colleen Hendricks
	765-482-5333 - Co-Chair - Karen Richards
Linda Trips	Joan Mohr Karen Turley Carolyn McMann

**Memorial Awards**

#	Item	Given By	In Memory of	Amount
687	1st – Largest Sunflower Head	Karen Richards	David Richards	\$5

**Special Awards**

#	Item	Given By	Amount
***	Onions	Home and Garden E.H.**	\$5
688	1st – Zucchini – largest by weight	Carolyn McMann & Family	\$5

\*\*\* see category/division/class number

**Rules**

1. Read the General Rules for individual exhibits on page 7 & 8.
2. Each exhibitor must choose the flower name and type to determine the proper class for entry.
3. One arrangement entry per class per exhibitor.
4. Specimens should be exhibited in soft drink bottle or similar container. The containers are to be provided by the exhibitor.
5. Horticulture material must be grown by the exhibitor. No commercially grown flowers. Wild flowers and weeds are permissible. Nothing artificial should be used. Dried material can be used as an accent only.
6. Potted plants, including Fairy Gardens, Terrariums, indoor and outdoor planters, must be in possession of exhibitor at least one month prior to showing with pot size (including plant) not to exceed 16 inches in diameter, plant foliage not to exceed 19".
7. The small end piece of the stamen must be removed from all lilies.

- 648. Squash
  - A. Acorn
  - B. Butternut
  - C. Crookneck
  - D. Zucchini
  - E. Other
- 649. Sweet Corn - plate of 3 (in the husks)
- 650. Tomatoes – plate of 5 (ripe or green)
- 651. Miscellaneous - Any vegetable not listed in classes listed above (up to 3 entries per exhibitor) .
- 652. Weird vegetable, fruit or gourd—any vegetable, fruit, or gourd grown naturally in an unusual shape.

**EXHIBITORS WITH DISABILITIES DIVISION - ADULT \***

Up to 4 entries per exhibitor.

- 653. Any item fitting into one of the subject divisions in the department.

**ARTS, CRAFTS, & HOBBIES - JUNIOR**  
**Age 18 & Under**  
**Rules**

**CONTINUED THIS YEAR:**

**No limit on number of entries. No limit on size of any entries.**

1. The same rules apply for the Junior Department as stated for the Adult Department of Arts, Crafts and Hobbies and in the General Rules on pages 7 & 8.
2. Rules must be followed as stated in book or ribbon award will be reduced and item will not be considered for top awards.
3. The age of the exhibitor must be indicated on the entry tag.
4. Entries must be made by the exhibitor.
5. No collections, posters or 4-H project notebooks will be accepted.
6. No 4-H project book may be entered as a scrapbook.
7. Not all 4-H projects can be accepted; the project must fit into an Open Show class. Please refer to Adult Department rules on page 14 and the General Rules on page 7 & 8.

**CERAMIC, CHINA & PORCELAIN DIVISION - JUNIOR \***

- 175. Any ceramic, china or porcelain item which may or may not include decals, any finish or hand painting.

**CHRISTMAS DIVISION - JUNIOR \***

- 179. Any Christmas themed item such as an ornament, wreath, decoration, figure and so forth

**CREATIVE WRITING DIVISION – JUNIOR \***

All entries must be the original work of the exhibitor.

Entries must be turned into the Purdue Extension Office on or before **Monday, July 1, 2024.**

**DO NOT WRITE YOUR NAME ON THE ENTRY.** Write your name and exhibitor # on an entry tag or a post-a-note attached to entry. If first time to enter, please include your address and phone number.

- 182. Letter/Note (emphasis on penmanship)
- 183. Poetry
- 184. Short story (up to 5 pages typed and double spaced)
- 185. Short story handwritten - illustrations optional, up to 10 pages (exhibitor up to Age 10)

**DECORATIVE PAINTING AND STENCIL WORK DIVISION - JUNIOR \***

- 186. Any item with decorative painting or stencil work

### HOBBIES DIVISION - JUNIOR \*

Large or hard-to-handle items must be displayed on a sturdy, solid base of material such as cardboard or wood. This is to enable handling by committee and to protect your entry from damage.

- 188. Building blocks – Lego, Construx, etc. Please specify if original design.
- 189. Decorated clothing (any item decorated with no sewing)
- 190. Digital Photo Book
- 191. Gift Wrapping - any item
- 192. Jewelry – handmade
- 193. Leather Work - handmade by exhibitor
- 194. Models - cars, trucks, etc., made from a kit.
- 195. Woodworking – specify on tag if built by exhibitor or a prebuilt item refinished by exhibitor
- 196. Miscellaneous

### HOME DECORATING & ACCESSORIES DIVISION - JUNIOR \*

- 198. Picture or Wall Hanging
- 199. Seasonal decoration
- 200. Miscellaneous

### RECYCLING DIVISION - JUNIOR \*

A short description of materials used must be written

and attached to the item (not written on the tag). Item's placing will be counted down if description not included.

- 202. Any item made primarily from recycled materials.

### SCRAPBOOK DIVISION - JUNIOR \*

- 203. Any scrapbook —special subject: **Capturing Memories**
- 204. Any scrapbook —subject other than the special subject.

Future scrapbooking subjects: **2025 - Life's Adventures & Moments**  
**2026 - Precious Memories**

### EXHIBITORS WITH DISABILITIES DIVISION - JUNIOR \*

- 205. Any Arts, Crafts or Hobbies item fitting into one of the subject divisions in the department.

### EXHIBITORS WORKING AS A TEAM DIVISION - JUNIOR\*

- 206. Any Arts, Crafts or Hobbies item fitting into one of the subject divisions in the department. Item is created by 2 or more people working together.

### HOUSEPLANT/OUTDOOR DIVISION - ADULT \*

(No Commercial Shine on Plants)

Maximum diameter of pots - 16" from outside of pot, plant foliage not to exceed 19"

Maximum height of planter 16" from top to bottom.

Plant foliage not to be taller than 24" from bottom of pot to top of foliage.

- 635. African Violet
  - A. Double flower
  - B. Single flower
- 636. Houseplant – give name
  - A. Flowering
  - B. Non-flowering
- 637. Planter – must include name of plants
  - A. Indoor
    - 1. Multiple
    - 2. Single
  - B. Outdoor
    - 1. Multiple
    - 2. Single
  - C. Indoor/Outdoor
    - 1. Terrarium
    - 2. Fairy Garden
- 638. Miscellaneous -- give name

### GARDENING DIVISION - ADULT \*

- 1. All entries exhibited on paper plates supplied by exhibitor unless specified otherwise.
  - 2. Potted herbs or plants will be judged in the Houseplant / Outdoor Division.
- 639. A basket or tray of assorted vegetables, at least 3 kinds. Container size not to exceed 12" x 16". Quality of vegetables and attractiveness of arrangement will be judged. All items must be raised by the exhibitor.
  - 640. Broccoli – 1 stalk
  - 641. Cabbage – best head on paper plate (leave 3 or 4 outside leaves on head)
  - 642. Cucumbers – plate of 3
    - A. Pickling
    - B. Slicing
  - 643. Green Beans – plate of 20 beans
  - 644. Herbs – 3 stems of the same variety. Must be displayed in a container of water. Up to 5 entries per exhibitor.
  - 645. Onions – plate of 5
  - 646. Peppers - plate of 3
    - A. Sweet Bell (up to 3 entries per exhibitor)
    - B. Hot (up to 3 entries per exhibitor)
    - C. Non-Bell (up to 3 entries per exhibitor)
  - 647. Potatoes – plate of 5

629. Roses

A. Floribundas (Buds to 3/4 open)

1. blends - 1 spray
2. pink - 1 spray
3. red - 1 spray
4. white - 1 spray
5. yellow - 1 spray

B. Hybrid Tea - A bud 1/2 to 3/4 open

1. blend - 1 bloom
2. pink - 1 bloom
3. red - 1 bloom
4. white - 1 bloom
5. yellow - 1 bloom
6. any other color - 1 bloom

C. Knock Out Roses

1. blends - 1 spray
2. pink - 1 spray
3. red - 1 spray
4. white - 1 spray
5. yellow - 1 spray
6. any other color - 1 spray

D. Miscellaneous Rose

630. Snapdragon - 3 spikes

631. Sweet Peas - 3 stems (with one or more on each stem)

632. Sunflower – 1 stem

633. Zinnias

A. Giant flowered, 4 inches and over - 1 bloom

B. Medium flowered, 2 inches to 4 inches - 1 bloom

C. Mexican or Persian Carpet - 3 blooms

D. Small flowered, under 2 inches - 3 blooms

634. Miscellaneous - Up to 3 entries per exhibitor. Bloom over 3" - 1 stem - same flower. Bloom under 3" - 3 stems - same flower.

A. Annual

B. Perennial

## Culinary - Adult Committee & Awards

- Co-Chair -

- Co-Chair -

**317-448-8241 - Bake Auction Chair - Bonnie Preston**

765-482-0497 - Check Out/Awards Distribution - Janet Spears

765-894-0612 - Cookies - JoAnn Pullen

765-585-1803 - Pies—Vera Rusk - Heart Healthy

765-894-5401 - Breads, Cakes & Candy- Brenda Garver

- Food Preservation -

765-482-2572 - Gifts from the Kitchen - Gluten Free Enhanced Box Mixes - Nancy Richardson

### Memorial Awards

#	Item	Given By	In Memory of	Amount
306	Any Yeast Bread	Village Homemakers E.H.**	Flossie Baker	\$10
307	Coffee Cake	Gleaners E.H.**	Nancy Guernsey	\$20
325	Angel Food Cake	Merri Mixers E.H. **	Sue Ann Henry	\$10
333	Cake – German Chocolate	Alan Cragun	Eleanor M. Cragun	\$25
334	Candy	Merri Mixers E.H. **	Judy Rice	\$5
346	Peanut Butter Fudge	Merri Mixers E.H. **	Donna Rice	\$10
349-364	Creative Cookie - Judges choice from any cookie category using creative decorations or ingredients.	Merri Mixers E.H. **	Shirley Woody	\$10
350	Peanut Butter Bar Cookie	The Robinson Family	Joe Robinson	\$15
359	Peanut Butter Cookie	Sugar Creek E.H.**	Leah M. Williams	\$10
365-368	Best Enhanced Box Mix Entry	Nancy & Sonny Richardson	Jeff Richardson	\$10
370	Heart Healthy Brownies	The Robinson Family	Joe Robinson, Boone County Extension Agent 1958-1979	\$5
379	Pie - Peach	Jeff & Georgi Kaser	Eugene Pock, Sr.	\$10
380	Pie - Raspberry	Jared, Eli & Caleb	Nana” Bobbie	\$10
408	Food Preservation - Jar of Apple Butter	Homemakers Union E.H. **	Ethel Shelton	\$5

**HORTICULTURE DIVISION - ADULT \***

**Leave a small amount of foliage on each flower**

#	Item	Given By	Amount
306 - 311	Bread—Fancy Yeast	Thorntown Public Library Taste of Home Samplers	\$5
313	Whole Grain Bread	Knit Spin Farm	\$10
324	Zucchini Bread	Dale Smith - Hope Realty	\$21
336	Cake - Lard - any layered cake made with and iced	Boone County Pork Producers	\$12
337-340	Cake - Fancy Decorated	Thorntown Public Library Youth Cooks	\$5
364	Cookies—Three Lard sugar cookies decorated as desired. Icing and other decorations may be used. Cookie cutter allowable. Judged on creativity and taste.	Boone County Pork Producers	\$12
369	Gifts From the Kitchen (NOTE: This entire winning basket will be sold at auction)	Gleaners E.H.**	\$15
376	President's Favorite Honoring the 2022-2023 Homemakers president of Boone County Extension Homemakers, Patty Nichols, for her favorite German Sweet Chocolate Cake, class #333.	Boone County Extension Homemakers	\$20
376-381	1st – Lard Pie Crust - Two crust pie made with any type filling. Recipe or list of ingredients must be submitted. 2nd – Lard Pie Crust -Two crust pie made with any type filling. Recipe or list of ingredients must be submitted	Boone County Pork Producers	\$10/\$5
381	Pie - Pecan	P.E.O. Chapter A. Thorntown	\$15

- 616. Aster - 1 bloom
- 617. Black Eyed Susan - 3 stems
- 618. Blooming Bush - 1 stem
- 619. Coneflower - 3 stems
- 620. Cosmos - 3 blooms
- 621. Dahlias - with foliage
  - A. Dahlias - (over 4 inches)
    - 1. Bronze or blends - 1 bloom
    - 2. Pink or Lavender - 1 bloom
    - 3. Red or Purple - 1 bloom
    - 4. Variegated color - 1 bloom
    - 5. White or Yellow - 1 bloom
  - B. Pom-Pom - 1 bloom (any color)
  - C. Miniature (under 4 inches) - 1 bloom
- 622. Daisy – 3 blooms
- 623. Glads or Gladiolus
  - A. blend - 1 spike
  - B. blue or lavender - 1 spike
  - C. cream - 1 spike
  - D. green - 1 spike
  - E. pink - 1 spike
  - F. red - 1 spike
  - G. salmon - 1 spike
  - H. white - 1 spike
  - I. yellow - 1 spike
- 624. Lilies - small end piece of the stamen must be removed
  - A. Day lilies --1 spike (up to 5 entries—different colors)
  - B. Tiger lilies - 1 spike
  - C. Others – 1 spike
- 625. Marigolds
  - A. Dwarf double - 3 stems with one bloom on each stem
  - B. Red and gold hybrid - 3 stem with one bloom on each stem
  - C. Single dwarf - 3 stems with one bloom on each stem
  - D. Tall double hybrid - 3 stems with one bloom on each stem
- 626. Pansy - 3 stems
- 627. Petunias
  - A. Double - 3 stems (with one or more blooms on each stem)
  - B. Single - 3 stems (with one or more blooms on each stem)
- 628. Phlox - 1 stem

## FLOWER & GARDEN DEPARTMENT - ADULT

19 years of age or older

### Rules

1. Read the General Rules for individual exhibits on pages 7 & 8.
2. Each exhibitor must choose the flower name and type to determine the proper class for entry.
3. One arrangement entry per class per exhibitor.
4. Specimens should be exhibited in soft drink bottle or similar container. The containers are to be provided by the exhibitor.
5. Horticulture material must be grown by the exhibitor. No commercially grown flowers. Wild flowers and weeds are permissible. Nothing artificial should be used. Dried material can be used as an accent only.
6. Potted plants including Fairy Gardens, Terrariums, indoor & outdoor planters, must be in possession of exhibitor at least one month prior to showing, with pot size (including plant) not to exceed 16 inches in diameter - foliage not to exceed 19".
7. The small end piece of the stamen must be removed from all lilies.

### ARTISTIC DESIGN DIVISION - ADULT \*

#### Accessories acceptable

603. "Less is More" - Arrangement of 1-5 flowers plus foliage.
604. "GRANDMOTHER'S GARDEN" – Flowers that might have been found in her garden.
605. "MORNING LIGHT" – Favorite pastel arrangement in appropriate container.
606. "SUNNY DAYS" - Tones of Yellow.
607. "FIRE WORKS DISPLAY" – A red, white & blue arrangement using an antique container.
608. "FULL MOON" – All white arrangement.
609. "MASTER GARDENER" - Arrangement of fresh cut flowers.
610. "ZANY WITH ZINNIAS" - Arrangement of Zinnias.
611. "SHORT ON TIME" – Arrangement 6" or less width and height.
612. "TRASH TO TREASURES" – Arrangement of roadside materials (not limited to Boone County roadsides).
613. "SCHOOL PRIDE" – Using flowers and accessories in school colors.
614. "4-H FAIR" – Tints, tones and shades of green and white.
615. "A STAR IS BORN" - Artistic design first-time entry. For anyone entering artistic design piece for the first time.

## CULINARY DEPARTMENT-ADULT

19 years of age or older

### Rules

1. Read the General Rules for individual exhibits on pages 7 & 8.
2. **ALL EXHIBITS MUST MEET THE FOLLOWING PURDUE UNIVERSITY FOOD SAFETY GUIDELINES** (revised 10/2022): *For Food Competitions: Fillings, frostings, glazes, and meringues are not permitted to contain cream cheese, sour cream, heavy cream, or whipped cream if they are not fully cooked/baked. These items are allowed as ingredients in food products IF the final product is cooked/baked. Additionally, raw milk, raw milk products or uncooked eggs/egg whites are not permitted. Eggs/egg whites that have been cooked to 160oF (i.e. pasteurized or included as part of a batter and baked) are acceptable. No home- canned fruits, vegetables, or meats are permitted as ingredients in food products.*

*Foods should be transported to the competition in a way that minimizes contamination and maintains the quality of the food (i.e. foods that are judged as frozen should remain frozen at all times).*

*Recipes must be provided that identifies all ingredients that were used in each part of the product. Any ingredient that could be a potential allergen must be clearly identified. Potential food allergens include, but are not limited to, milk, eggs, peanuts, tree nuts, fish, crustacean shellfish, wheat, soy and sesame. Each food product must be labeled with the following information:*

- Name
- Date the food product was made

*Contestants should carefully wash their hands and make sure that their hands do not have any open cuts before preparing foods. If cuts are present, the wound should be bandaged and a single use food service glove worn on the hand during all stages of food production. Contestants should not be preparing food exhibits for competition within 48 hours of recovering from any illness. People experiencing symptoms of vomiting, diarrhea, fever, and/or jaundice should not be allowed to prepare food.*

*Judges and individuals who will consume products from county and/or state competitions should be informed that they are at risk for foodborne illness since the established policy cannot guarantee that an entry has been properly prepared or handled before, during or following the competition. The food products for competitions are home produced and processed and the production area is not inspected by the Indiana Department of Health. Tasting of a food product is solely at the discretion of the judge and consumers. Judges are NOT to taste any home preserved foods such as low-acid or acidified foods like green beans, tomatoes or tomato products, jams/jellies/fruit preserves or fermented products produced in the home.*

3. The whole product must be brought in for judging.
4. A portion of the product will remain on display, except for fancy decorated cakes, in which case the entire cake or cake form will remain on display.
5. The remainder of the product will be sold at auction. Extra items may be donated to the auction. Proceeds will be used by the Extension Homemakers Council to help pay cash awards. Fresh baked auction will be held Wednesday, July 24 at 6:00pm in Dining Room of the Farm Bureau Community Building.
6. Products are to be placed on stiff cardboard that has been covered or on a 9" disposable plate and enclosed in a zip-up plastic bag or plastic food wrap.
7. Pies must be in **disposable pie pan**, not Pyrex, covered with a zip-up bag or plastic food wrap.



8. Graham cracker and refrigerator pies will not be accepted.
9. Lattice top will be considered as a two (2) crust pie.
10. To be judged at their best, pies should be **cooled completely** before enclosing in a zip-up plastic bag or plastic food wrap.
11. All entries must be made from scratch with the exception of enhanced box division.
12. Angel Food and Chiffon Cakes are to be made from scratch and baked in a standard pan with a center tube.
13. Candy will be accepted with or without nuts in at least 1/2 pound quantity, cut in pieces. Place on a 9" plain disposable plate and enclose in a zip-up plastic bag or cover with plastic food wrap.
14. In Food Preservation Division, please note **(2) jars** are to be brought of pickles, relishes, jellies, preserves and jams, and fruit butters, one for display and one for food auction. **All foods, except dehydrated, must be processed by water bath or pressure canner to secure seal (no paraffin). Unsealed jars will be disqualified.** All jars shall be standard colorless canning jars, not mayonnaise jars. Use **new** lids and rings. Label each with name of product and processed date. When two jars are required, they should be same size.
15. No paraffin-topped jams and jellies.
16. Judges prefer recipes be submitted. We will accept a list of the ingredients used in the product. There are some exceptions, please note each category.

## Flower & Garden - Adult

### Committee & Awards

765-894-1821 - Co-Chair - Colleen Hendricks

765-482-5333 - Co-Chair - Karen Richards

Karen Turley

Joan Mohr

Linda Trips

Carolyn McMann

### Memorial Awards

#	Item	Given By	In Memory of	Amount
601	1st – Sunflower Head - largest in diameter	Karen Richards	David Richards	\$5
603	Artistic Design – “Less is More” an arrangement of 5 blooms or less; should include greenery	Friendly City Garden Club	Margot Corson	\$10
604	Best artistic design In “Grandmother’s Garden”	Country Calicos E.H.**	Mary Lenderman	\$10
***	Rose - Yellow	Alan Cragun	Eleanor M. Cragun	\$25
***	Best of Show - Sweet Corn	Robinson Family	Joe Robinson, Boone County Extension Agent 1958-1979	\$15
***	Sweet Pea	Bev Ramsey	Ivan & Violet Fairfield	\$5
606	Best Artistic Design in “Sunny Days”	Kathy Staton & Lisa Ping	Gaylon Bowen	\$10
612	Best artistic design In “Trash to Treasurers”	Tim & Sandra Townsend	Rosetta Townsend	
650	Best Tomato	Karen Richards	David Richards	\$5
***	Judges Choice	Merri Mixers E.H.**	Sandy Copenhagen	\$10
***	Morning Light”	Merri Mixers E.H.**	Verna Newton	\$10

\*\*\* see category/division/class number

### Special Awards

#	Item	Given By	Amount
***	Judge’s Choice Favorite artistic design arrangement	Village Homemakers E.H.**	\$10
602	1st – Zucchini – largest by weight	Carolyn McMann & Family	\$15
***	Glads/Gladiolus	Kelly Frank	\$15
***	Hybrid Tea Rose	Home & Garden E.H.**	\$5
***	Best Weird Vegetable, Fruit or Gourd A vegetable, fruit, or gourd that has NATURALLY grown into a familiar or unusual shape. No vegetable, fruit or gourd that has been grown in a mold or manipulated will be accepted. May be awarded to Adult or Junior	Ty Ridenour	\$5

\*\*\* see category/division/class number

**WATERCOLOR DIVISION \***

Up to 5 entries may be made in each class

Must be matted, framed and glassed, or as is appropriate to the piece presented

- 831. Abstract
- 832. Architectural
- 833. Living Creatures – Domestic or Wild
- 834. Group – People
- 835. Landscape
- 836. Portrait
- 837. Religious
- 838. Still Life
- 839. Water & Seascape
- 840. Other

**SCULPTURE DIVISION \***

Up to 5 entries may be made in each class

**RULES for Sculpture**

- 1. Work shall not be over 50 pounds – not over 3 feet high – not over 2 feet wide – not over 2 feet deep.
- 2. Basic materials of the sculpture shall be: clay (kiln dried or air dried); embossed or handmade papers; wood; metal (aluminum, brass, bronze, copper, iron, or steel); or stone (limestone, soapstone or any other natural stone or concrete, or, other cementitious type of material such as gunnite).
- 3. No kits or items from commercial molds will be accepted.
- 4. Item must be the original work of the artist.

- 841. Full Figure
- 842. Living Creatures – Domestic or Wild
- 843. Caricature
- 844. Bust
- 845. Other

**MISCELLANEOUS \***

Must be matted, framed and glassed, or as is appropriate to the piece presented

- 846. Any item not eligible for above divisions

**EXHIBITORS WITH DISABILITIES DIVISION - CHILDREN\***

Up to 4 entries per exhibitor.

- 847. Any Fine Arts item fitting into one of the subject divisions in the department.

**BREADS DIVISION - ADULTS**

Category: Fancy Yeast Bread \*

**List of ingredients**

- 306. Cinnamon Rolls (submit 4)
- 307. Coffee Cake.
- 308. Pecan Rolls (submit 4)
- 309. Sweet Rolls (submit 4)
- 310. Tea Ring
- 311. Miscellaneous

Category: Yeast Bread \*

**List of ingredients**

- 312. Bread – Loaf - white
- 313. Bread – Loaf – whole wheat, rye, etc.
- 314. Bread – Loaf - Miscellaneous
- 315. Bread – Specialty – cinnamon, herb, raisin, etc.
- 316. Bread Machine Loaf (from scratch)
- 317. Dinner Rolls (submit 4)

Category: Quick Bread \*

**List of ingredients**

- 318. Biscuits (submit 4)
- 319. Bread - Fruit
- 320. Bread – Nut
- 321. Bread – Other quick
- 322. Coffee Cake – without yeast
- 323. Muffins (submit 4)
- 324. Specialty – carrot, pumpkin, zucchini, etc.

**CAKE DIVISION - ADULT**

Category: Iced or Not Iced Cakes \*

**List of ingredients**

- 325. Angel Food, made from scratch, white, un-iced
- 326. Applesauce Cake
- 327. Bundt Cake
- 328. Chiffon – any kind
- 329. Miscellaneous
- 330. Cupcakes - any kind (submit 4)

**Category: Layered Cakes \***

(2 or more layers - frosted)

**List of ingredients**

- 331. Banana Cake
- 332. Chocolate Cake
- 333. German Sweet Chocolate Cake
- 334. Spice Cake
- 335. White Cake
- 336. Miscellaneous
  - A. Butter
  - B. Lard
  - C. Other

**Category: Fancy Decorated Cakes \***

(May be on cake or form)

- 337. Wedding Cake
- 338. Cake for a special day, holiday, birthday, etc. DO NOT CUT CAKE.
- 339. Small, individual cakes, cut from layer cake or cupcakes, different shapes, frosted and decorated (Submit 3)
- 340. Novelty

**CANDY DIVISION - ADULT \***

(Submit 1/2 pound)

**List of ingredients**

- 341. Caramel
- 342. Chocolate Fudge
- 343. Divinity
- 344. English Toffee
- 345. Peanut Brittle
- 346. Peanut Butter Fudge
- 347. Uncooked - may not contain cream cheese
- 348. Miscellaneous - No sugar coated nuts - not a candy

**COOKIES DIVISION - ADULT \***

(submit 6)

**List of ingredients**

- 349. Bar Cookies
- 350. Brownies
- 351. Chip Cookies – butterscotch , chocolate, etc.
- 352. Chocolate Cookies
- 353. Drop Cookies
- 353A. Pecan Cookies
- 354. Fancy Cookies

**Fine Arts Department – Children**

**ACRYLIC DIVISION \***

**Up to 5 entries may be made in each class**

**Must be framed**

- 801. Abstract
- 802. Architectural
- 803. Living Creatures – Domestic or Wild
- 804. Group – People
- 805. Landscape
- 806. Portrait
- 807. Religious
- 808. Still Life
- 809. Water & Seascape
- 810. Other

**DRAWING – INK, PASTEL, PEN, PENCIL, CHARCOAL DIVISION \***

**Up to 5 entries may be made in each class**

**Must be matted, framed and glassed, or as is appropriate to the piece presented**

- 811. Abstract
- 812. Architectural
- 813. Living Creatures – Domestic or Wild
- 814. Group – People
- 815. Landscape
- 816. Portrait
- 817. Religious
- 818. Still Life
- 819. Water & Seascape
- 820. Other

**OIL DIVISION \***

**Up to 5 entries may be made in each class**

**Must be framed**

- 821. Abstract
- 822. Architectural
- 823. Living Creatures – Domestic or Wild
- 824. Group – People
- 825. Landscape
- 826. Portrait
- 827. Religious
- 828. Still Life
- 829. Water & Seascape
- 830. Other

**WATERCOLOR DIVISION \***

**Up to 5 entries may be made in each class**

**Must be matted, framed and glassed, or as is appropriate to the piece presented**

- 577. Abstract
- 578. Architectural
- 579. Living Creatures – Domestic or Wild
- 580. Group – People
- 581. Landscape
- 582. Portrait
- 583. Religious
- 584. Still Life
- 585. Water & Seascape
- 586. Other

**SCULPTURE DIVISION \***

**Up to 5 entries may be made in each class**

**RULES for Sculpture**

- 1. Work shall not be over 50 pounds – not over 3 feet high – not over 2 feet wide – not over 2 feet deep.
- 2. Basic materials of the sculpture shall be: clay (kiln dried or air dried); embossed or handmade papers; wood; metal (aluminum, brass, bronze, copper, iron, or steel); or stone (limestone, soapstone or any other natural stone or concrete, or, other cementitious type of material such as gunnite).
- 3. No kits or items from commercial molds will be accepted.
- 4. Item must be the original work of the artist.

- 587. Full Figure
- 588. Living Creatures – Domestic or Wild
- 589. Caricature
- 590. Bust
- 591. Other

**MISCELLANEOUS \***

**Must be matted, framed and glassed, or as is appropriate to the piece presented**

- 592. Any item not eligible for above divisions

**EXHIBITORS WITH DISABILITIES DIVISION - JUNIOR \***

**Up to 4 entries per exhibitor.**

- 593. Any Fine Arts item fitting into one of the subject divisions in the department.

- 355. Fruit Cookies
- 356. Ice Box Cookies
- 357. Mexican Wedding Cakes
- 358. Oatmeal Cookies
- 359. Peanut Butter Cookies
- 360. Shaped Cookies
- 361. Snickerdoodles
- 362. Unbaked Cookies
- 363. Variety cookies – Plate of 6
- 364. Sugar Cookies
- 364A. Lard

**ENHANCED BOX MIXES DIVISION - ADULT \***

**Recipe must be submitted. Use box mix as part of ingredients**

- 365. A. Cake  
B. Cupcakes
- 366. Cookies (6)
- 367. Quick Breads
- 368. Yeast Breads

**GIFT FROM THE KITCHEN DIVISION - ADULT \***

- 369. Exhibit a homemade food gift in a container (basket, bowl, jar, etc.) appropriate for any occasion. Product will not be tasted. Judged on creativity, eye appeal and presentation. **The featured product must be homemade** but the container may include purchased accessories such as spoons, measuring cups, napkins, etc. Please include a list of items in the container. **PLEASE MARK ON YOUR ENTRY TAG IF YOU DO NOT WANT YOUR ITEM SOLD AT AUCTION AND INDICATE WHICH ITEM IS HOMEMADE.**

**HEART HEALTHY DIVISION - ADULT \***

**(Recipe must be submitted.)**

Major emphasis will be on lowering fat and cholesterol and increasing fiber.

- 370. Brownies
- 371. Cakes
- 372. Cookies (submit 6)
- 373. Muffins (submit 4)
- 374. Quick Breads
- 375. Miscellaneous

**PIE DIVISION - ADULT \***  
**(NOT ACCEPTED - CREAM PIES OR OTHER PIES**  
**MADE WITH HOME FROZEN OR CANNED FRUITS)**

**List of ingredients**

Category: 1 or 2-crust pie including lattice top

- 376. Apple
- 377. Apricot
- 378. Cherry
- 379. Peach
- 380. Raspberry
- 381. Miscellaneous (fruit)

Category: Open Face Pies

- 382. Dutch Apple
- 383. Pecan
- 384. Miscellaneous

**GLUTEN FREE DIVISION - ADULT \***  
**(recipe must be submitted)**

- 385. Bread
- 386. Cake
- 387. Cookies (submit 6)
- 388. Miscellaneous

**FOOD PRESERVATION DIVISION ADULT \***

Each exhibit except canned fruits and canned vegetables will be opened for judging. All products must have been canned after the 24th of July of the previous year. **USE STANDARD COLORLESS GLASS CANNING JARS. JARS MUST HAVE NEW LIDS, RINGS AND LABELS. ALL FOODS EXCEPT DEHYDRATED, MUST BE PROCESSED BY WATER BATH OR PRESSURE CANNER TO SECURE SEAL (NOT PARAFFIN). UNSEALED JARS WILL BE DISQUALIFIED. NO RECIPE REQUIRED.**

**Category: Fruits**

Must be in standard colorless glass canning jars, using new lids, rings and labels.  
 Bring one jar any size .

- 389. Fruit Juice
- 390. Peaches
- 391. Sweet Cherries
- 392. Miscellaneous

**Fine Arts Department – Junior**

**ACRYLIC DIVISION \***  
**Up to 5 entries may be made in each class**  
**Must be framed**

- 547. Abstract
- 548. Architectural
- 549. Living Creatures – Domestic or Wild
- 550. Group – People
- 551. Landscape
- 552. Portrait
- 553. Religious
- 554. Still Life
- 555. Water & Seascape
- 556. Other

**DRAWING – INK, PASTEL, PEN, PENCIL, CHARCOAL DIVISION \***  
**Up to 5 entries may be made in each class**

**Must be matted, framed and glassed, or as is appropriate to the piece presented**

- 557. Abstract
- 558. Architectural
- 559. Living Creatures – Domestic or Wild
- 560. Group – People
- 561. Landscape
- 562. Portrait
- 563. Religious
- 564. Still Life
- 565. Water & Seascape
- 566. Other

**OIL DIVISION \***  
**Up to 5 entries may be made in each class**  
**Must be framed**

- 567. Abstract
- 568. Architectural
- 569. Living Creatures – Domestic or Wild
- 570. Group – People
- 571. Landscape
- 572. Portrait
- 573. Religious
- 574. Still Life
- 575. Water & Seascape
- 576. Other

**SCULPTURE DIVISION \***  
**Up to 5 entries may be made in each class**

**RULES for Sculpture**

1. Work shall not be over 50 pounds – not over 3 feet high – not over 2 feet wide – not over 2 feet deep.
2. Basic materials of the sculpture shall be: clay (kiln dried or air dried); embossed or handmade papers; wood; metal (aluminum, brass, bronze, copper, iron, or steel); or stone (limestone, soapstone, or any other natural stone or concrete, or other cementitious type of material such as gunnite).
3. No kits or items from commercial molds will be accepted.
4. Item must be the original work of the artist.

540. Full Figure  
541. Living Creatures – Domestic or Wild  
542. Caricature  
543. Bust  
544. Other

**MISCELLANEOUS \***

**Must be matted, framed and glassed, or as is appropriate to the piece presented**

545. Other Fine Art forms not eligible for above Fine Arts divisions. May include multimedia, computer generated art, and print making.

**SKILLED CARE/ASSISTED LIVING DIVISION \***

546. Any Subject

**EXHIBITORS WITH DISABILITIES DIVISION - ADULT \***

Up to 4 entries per exhibitor.

- 546A. Any Fine Arts item fitting into one of the subject divisions in the department.

**Category: Vegetables**

Must be in standard colorless glass canning jars, using new lids, rings, and labels.

Bring one jar any size

393. Vegetables (may enter up to 3 vegetable varieties)  
394. Tomatoes - Juice  
395. Tomatoes - Whole  
396. Miscellaneous

**Category: Dehydrated Foods**

Must be entered in clear plastic sandwich bag displaying uniform pieces and good color.

Bring one bag per entry

397. Fruits  
398. Meats  
399. Vegetables

**Category: Fruit Butters**

Must be in standard colorless glass canning jars, using new lids, rings, and labels.

No paraffin-topped jars. Must be processed in hot water bath.

Bring two jars any size (both jars same size)

400. Apple  
401. Peach  
402. Miscellaneous

**Category: Conserves, Jams & Preserves**

Must be in standard colorless glass canning jars, using new lids, rings and labels.

No paraffin-topped jars. Must be processed in hot water bath.

Bring two jars any size (both jars same size)

403. Conserves  
404. Peach  
405. Strawberry  
406. Miscellaneous

**Category: Jellies**

Must be in standard colorless glass canning jars, using new lids, rings and labels.

No paraffin-topped jars. Must be processed in hot water bath.

Bring two jars any size (both jars same size)

407. Apple  
408. Grape  
409. Miscellaneous

**Category: Pickles**

Must be in standard colorless glass canning jars, using new lids, rings and labels.

Bring two jars any size (both jars same size)

410. Bread & Butter  
411. Dill  
412. Pickled Beets  
413. Sweet (May enter up to 3 varieties of sweet pickles)  
414. Miscellaneous

**Category: Relishes**

Must be in standard colorless glass canning jars, using new lids, rings and labels.  
Bring two jars any size (both jars same size)

- 415. Chili Sauce
- 416. Corn Relish
- 417. Salsa
- 418. Spaghetti Sauce
- 419. Sweet Relish
- 420. Tomato Ketchup
- 421. Miscellaneous

**EXHIBITORS WITH DISABILITIES DIVISION—ADULT\***

Up to 4 entries per exhibitor.

- 422. Any Culinary item fitting into one of the subject divisions in the department.

**DRAWING – INK, PASTEL, PEN, PENCIL, CHARCOAL DIVISION \***

Up to 5 entries may be made in each class

Must be matted, framed and glassed, or as is appropriate to the piece presented

- 510. Abstract
- 511. Architectural
- 512. Living Creatures – Domestic or Wild
- 513. Group – People
- 514. Landscape
- 515. Portrait
- 516. Religious
- 517. Still Life
- 518. Water & Seascape
- 519. Other

**OIL DIVISION \***

Up to 5 entries may be made in each class

Must be framed

- 520. Abstract
- 521. Architectural
- 522. Living Creatures – Domestic or Wild
- 523. Group – People
- 524. Landscape
- 525. Portrait
- 526. Religious
- 527. Still Life
- 528. Water & Seascape
- 529. Other

**WATERCOLOR DIVISION \***

Up to 5 entries may be made in each class

Must be matted, framed and glassed, or as is appropriate to the piece presented

- 530. Abstract
- 531. Architectural
- 532. Living Creatures – Domestic or Wild
- 533. Group – People
- 534. Landscape
- 535. Portrait
- 536. Religious
- 537. Still Life
- 538. Water & Seascape
- 539. Other

**Fine Arts Department**  
**Adult: 19 years of age or older**  
**Junior: 12 to 18 years old**  
**Children: 11 years old and under**  
**Rules**

1. Read the General Rules for individual exhibits on pages 7 & 8.
2. Up to five entries may be made in each class.
3. Work offered shall have been produced during the past 3 years and must be the original production of the exhibitor.
4. Original compositions may be on any background surface within a fine arts configuration.
5. All bases or plinths should be finished metal, stone, wood, or a combination of all 3.
6. All paintings must be framed, except those in a gallery-quality frame. Unframed canvases accepted if the wrap-around sides are an integral part of the painting. Water colors and drawings must be matted and framed.
7. Plexiglas may be used in lieu of glass as regards framing.
8. Hangers are required. Any style accepted so long as the artwork can be hung securely.
9. An exhibit must have won a blue ribbon to merit a higher award.
10. **All paintings done in a step-by-step class (ex. Painting with a Twist, Wine and Canvas) will be treated as copied work and will not be eligible for judging. Painting classes as a series of classes is acceptable as long as it isn't an instructional step by step method.**
11. Number paintings will not be accepted.
12. No Play Dough or plastiline clays or sticky notes allowed. Only clay that can be dried in a kiln or hardened by air drying is allowed.
13. If you decide to enter your artwork that is not compliant with the rules and requirements, artwork is subject to a lower placing.
14. The individual must indicate on the back of the picture whether the picture is an original or a copy; "original" meaning an original composition from life or reference, and "copy" meaning recognizably copied from another artwork or a previously published source.

**Fine Arts -- Adult**  
**ACRYLIC DIVISION \***  
**Up to 5 entries may be made in each class**  
**Must be framed**

500. Abstract
501. Architectural
502. Living Creatures – Domestic or Wild
503. Group – People
504. Landscape
505. Portrait
506. Religious
507. Still Life
508. Water & Seascape
509. Other

**Culinary - Junior**  
**Committee & Awards**

317-341-2284 Stephanie Rapp

**Memorial Awards**

#	Item	Given By	In Memory of	Amount
426	Any Bread	Village Homemakers E.H.**	Virginia Hart	\$10
438	Chocolate Cake	Merri Mixers E.H. **	Kristy Bush Hoffman	\$10

**Special Awards**

#	Item	Given By	Amount
448	Brownies - iced	Gary & Teresa Grissom	\$10
449	Chocolate Chip Cookie	Becky Cheetham	\$10
451	Oatmeal Cookie	Gary & Teresa Grissom	\$10
458	Chocolate No-Bake Cookies	Becky Cheetham	\$10
456-A	1st -Two Sugar cookies shaped as a PIG and decorated as desired, cookie cutter allowable. Icing and other decorations may be used. Judged on creativity and taste. Submit recipe.	Boone County Pork Producers	\$10
456-B	2nd -Two Sugar cookies shaped as a PIG and decorated as desired, cookie cutter allowable. Icing and other decorations may be used. Judged on creativity and taste. Submit recipe.	Boone County Pork Producers	\$5
456-C	Patriotic Sugar Cookie In honor of our military men and women	Gleaners E.H.**	\$5
336	Cake - Lard - any layered cake made with and iced	Boone County Pork Producers	\$12
337-340	Cake - Fancy Decorated	Thorntown Public Library Youth Cooks	\$5
364	Cookies—Three Lard sugar cookies decorated as desired. Icing and other decorations may be used. Cookie cutter allowable. Judged on creativity and taste.	Boone County Pork Producers	\$12



## CULINARY DEPARTMENT - JUNIOR

age 18 and under

### Rules

1. Read the General Rules for individual exhibits on pages 7 & 8.
2. **ALL EXHIBITS MUST MEET THE FOLLOWING PURDUE UNIVERSITY FOOD SAFETY GUIDELINES** (revised 10/2022): *For Food Competitions: Fillings, frostings, glazes, and meringues are not permitted to contain cream cheese, sour cream, heavy cream, or whipped cream if they are not fully cooked/baked. These items are allowed as ingredients in food products IF the final product is cooked/baked. Additionally, raw milk, raw milk products or uncooked eggs/egg whites are not permitted. Eggs/egg whites that have been cooked to 160oF (i.e. pasteurized or included as part of a batter and baked) are acceptable. No home- canned fruits, vegetables, or meats are permitted as ingredients in food products.*

*Foods should be transported to the competition in a way that minimizes contamination and maintains the quality of the food (i.e. foods that are judged as frozen should remain frozen at all times).*

*Recipes must be provided that identifies all ingredients that were used in each part of the product. Any ingredient that could be a potential allergen must be clearly identified. Potential food allergens include, but are not limited to, milk, eggs, peanuts, tree nuts, fish, crustacean shellfish, wheat, soy and sesame. Each food product must be labeled with the following information:*

- Name
- **Date the food product was made**

*Contestants should carefully wash their hands and make sure that their hands do not have any open cuts before preparing foods. If cuts are present, the wound should be bandaged and a single use food service glove worn on the hand during all stages of food production. Contestants should not be preparing food exhibits for competition within 48 hours of recovering from any illness. People experiencing symptoms of vomiting, diarrhea, fever, and/or jaundice should not be allowed to prepare food.*

*Judges and individuals who will consume products from county and/or state competitions should be informed that they are at risk for foodborne illness since the established policy cannot guarantee that an entry has been properly prepared or handled before, during or following the competition. The food products for competitions are home produced and processed and the production area is not inspected by the Indiana Department of Health. Tasting of a food product is solely at the discretion of the judge and consumers. Judges are NOT to taste any home preserved foods such as low-acid or acidified foods like green beans, tomatoes or tomato products, jams/jellies/fruit preserves or fermented products produced in the home.*

3. The whole product must be brought in to be judged.
4. A portion of the product will remain on display, except for fancy decorated cakes, in which case the entire cake or cake form will remain on display.
5. The remainder of the product will be sold at auction. Extra items may be donated to the auction. The proceeds of the auction will be used by the Extension Homemakers Council to help pay cash awards. The Bake Auction will be held **Wednesday, July 24** at 6:00pm in Dining Room of the Boone County Farm Bureau Inc. Community Building.

## FINE ARTS DEPARTMENT

### Committee & Awards

Kate Emmert - Chair  
Dorothea Mickschl Nancy Everett Gary Emmert

#### Special Awards - Adult

Special awards are sponsored by the organizations listed below and are selected as the 'Judge's Choice' in that specific category. The artwork does not have to be awarded a high ribbon (Champion, Reserve Champion, Sweepstakes) to be considered for a Special Award..

#### Special Awards—Adult

#	Item	Given By	Amount
50	Water Color	Gingham Pals E.H.**	\$5
51	<b>Drawing in pencil, chalk, or colored pencil</b>	<b>In Memory of Debbie Reger</b>	<b>\$15</b>

\*\*\* see category/division/class number

#### Special Awards - Junior

#	Item	Given By	Amount
52	Drawing in ink, pastel, pen or other	Gingham Pals E.H.**	\$5
53	<b>Drawing in pencil, chalk, or colored pencil</b>	<b>In Memory of Debbie Reger</b>	<b>\$15</b>

\*\*\* see category/division/class number

#### Special Awards - Children

#	Item	Given By	Amount
54	Drawing in ink, pastel or pen	Gingham Pals E.H.**	\$5

\*\*\* see category/division/class number

**GLUTEN FREE - JUNIOR\***  
Recipe must be submitted.

**EXHIBITORS WITH DISABILITIES - JUNIOR\***  
Up to 4 entries per exhibitor

478. Any Culinary item fitting into one of the subject divisions in the department.

**CULINARY DEPARTMENT - JUNIOR**

**18 years old & under**

**Rules—Continued**

6. Products are to be placed on stiff cardboard that has been covered or on a 9" disposable plate and enclosed in a zip-up plastic bag or plastic food wrap.
7. Pies must be in **disposable pie pan**, not Pyrex, covered with a zip-up bag or plastic food wrap.
8. Graham cracker and refrigerator pies will not be accepted.
9. Lattice top will be considered as a two (2) crust pie.
10. To be judged at their best, pies should be **cooled completely** before enclosing in a zip-up plastic bag or plastic food wrap
11. All entries must be made from scratch with exception of snack jar.
12. Angel Food and Chiffon Cakes are to be made from scratch and baked in a standard pan with a center tube.
13. Candy will be accepted with or without nuts in at least 1/2 pound quantity, cut in pieces. Place on a 9" plain disposable plate and enclose in a zip-up plastic bag or cover with plastic food wrap.
14. Food Preservation Division, please note **two jars (of same size)** are to be brought of pickles, relishes, jellies, preserves and jams, and fruit butters—one for display and one for food auction. **All foods, except dehydrated, must be processed by water bath or pressure canner to secure seal (no paraffin). Unsealed jars will be disqualified.** All jars shall be standard colorless canning jars, not mayonnaise jars. Use **new** lids and rings. Label each with name of product and processed date. When two jars are required, they should be same size.
15. No paraffin topped jams and jellies.
16. Reminder—list of ingredients must accompany each product.
17. Judges prefer recipes be submitted but will accept a list of the ingredients used in the product. There are some exceptions; please note each category.

**BREADS DIVISION - JUNIOR\***  
**Category: Quick Bread**

- 426. Bread – fruit, vegetable and/or nut bread – 1 loaf
- 427. Coffee Cake – without yeast
- 428. Muffins – any variety – submit 4
- 429. Specialty

**Category: Yeast Bread**

- 430. Bread – 1 loaf
- 431. Bread Machine Bread – made from scratch – 1 loaf
- 432. Coffee Cake
- 433. Rolls – sweet – submit 4
- 434. Rolls – yeast – any shape – submit 4
- 435. Miscellaneous

**CAKE DIVISION - JUNIOR\***  
**Category: Iced or Un-iced Cake**

- 436. Angel Food - made from scratch – white - un-iced
- 437. Bundt Cake
- 438. Chocolate Cake - iced, may be 1 or 2 layers
- 439. Miscellaneous
- 440. Cupcakes - any kind - (submit 4)

**Category: Fancy Decorated Cakes**  
**(May be on cake or form)**

- 441. Cake for a special day, holiday, birthday, etc. DO NOT CUT CAKE.
- 442. Novelty
- 443. Small individual cakes, cut from layer cake or cupcakes, different shapes, frosted and decorated (submit 3)

**CANDY DIVISION - JUNIOR\***  
**(Submit 1/2 pound)**

- 444. Fudge - any kind
- 445. Uncooked (may not contain cream cheese)
- 446. Miscellaneous

**COOKIES DIVISION - JUNIOR\***  
**(submit 6)**

- 447. Bar Cookies
- 448. Brownies
- 449. Chip Cookies
- 450. Drop Cookies
- 451. Oatmeal Cookies
- 452. Peanut Butter Cookies
- 453. Shaped Cookies
- 454. Snickerdoodles
- 455. Unbaked Cookies
- 456. Sugar Cookies
- 456-A Special Pig- submit 2

- 456-B Special Patriotic
- 457. Miscellaneous
- 458. Chocolate No Bake Cookies

**PIE DIVISION - JUNIOR\***

- 459. Miscellaneous

**FOOD PRESERVATION DIVISION - JUNIOR\***

Each exhibit except canned fruits and canned vegetables will be opened for judging. All products must have been canned after the 24th of July of the previous year. **USE STANDARD COLORLESS GLASS CANNING JARS. JARS MUST HAVE NEW LIDS, RINGS AND LABELS. ALL FOODS EXCEPT DEHYDRATED, MUST BE PROCESSED BY WATER BATH OR PRESSURE CANNER TO SECURE SEAL (NOT PAR-AFFIN). UNSEALED JARS WILL BE DISQUALIFIED. NO RECIPE REQUIRED.**

- 460. Miscellaneous Fruit (1 jar)
- 461. Miscellaneous Jam or Jelly (2 jars)
- 462. Miscellaneous Salsa (2 jars)
- 463. Miscellaneous Vegetable (1 jar)

**"A SNACK JAR" - JUNIOR\***

- 464.** An original creative combination of commercially prepared snacks to fill a clear quart jar. This will be judged on the visual appeal of the snack combination and the decoration of the jar. **Please submit a separate card with a list of the snack content.**

**HEART HEALTHY DIVISION - JUNIOR\***

**(Recipe must be submitted.)**

(Major emphasis on lowering fat and cholesterol and increasing fiber.)

- 465. Brownies
- 466. Cakes
- 467. Cookies (submit 6)
- 468. Muffins (submit 4)
- 469. Quick Breads
- 470. Miscellaneous

**ENHANCED BOX MIXES DIVISION - JUNIOR\***

**Recipe must be submitted. Use box mix as part of ingredients.**

- 471. Cake
- 472. Cookies (submit 6)

**GLUTEN FREE - JUNIOR\***

**Recipe must be submitted.**

- 473. Bread
- 474. Cookies (submit 6)
- 475. Cakes
- 476. Muffins (submit 4)

**This book was made  
possible through the  
generous support of:**

*We understand the dedication  
and hard work that goes into  
completing successful projects for the  
Boone County Extension Homemakers!*

Minute Print It  
Salutes the Boone County  
Extension Homemakers



Minute Print It

312 W. South St. • Lebanon, IN  
Phone (765) 482-9019 Fax (765) 482-9050  
[www.minuteprint.com](http://www.minuteprint.com)