

PURDUE EXTENSION BOONE COUNTY

4-H SWINE WORKSHEETS

Grade 12-B



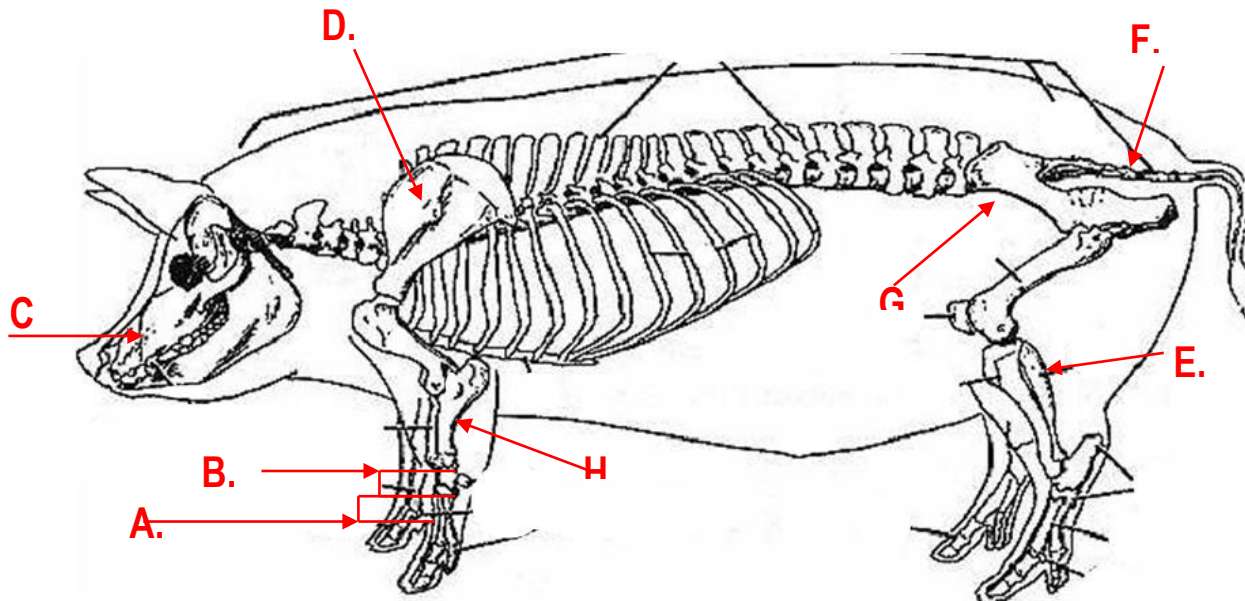
Name: _____
Club Name: _____

Grade: _____
Date: _____

1. Label the bones indicated on the pig skeleton below.

a. _____
b. _____
c. _____
d. _____

e. _____
f. _____
g. _____
h. _____



2. What are the six types of records that are important to keep in a swine enterprise on a day to day basis?

a. _____
b. _____
c. _____

d. _____
e. _____
f. _____

3. What is the number one reason for removing a sow from the herd? _____

Answers can be found in the OSU Swine Resource Handbook – 4-H 134R.

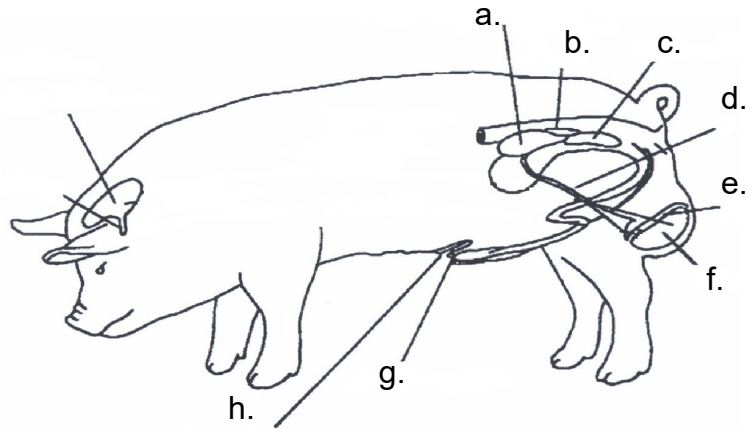
Purdue University is an equal access/equal opportunity institution.
This material may be available in alternative formats.

4. Gilts should have at least _____ well-spaced functional teats to a _____.
5. Boars should be selected at least _____ months prior to breeding. Why? _____

 _____.

6. Identify the parts of the reproductive tract of the male pig indicated below.

- a. _____
- b. _____
- c. _____
- d. _____
- e. _____
- f. _____
- g. _____
- h. _____



7. Genes are _____ and are responsible for _____.
8. The offspring receive _____ its genes from each parent.
- a. 25%
 - b. 50%
 - c. 75%
 - d. 100%
9. The locus is: _____. At the same locus on _____ chromosomes are genes that affect the same trait.
10. What are the heritability estimates for the following swine traits?
- a. Backfat thickness: _____
 - b. Days to 250 pounds: _____
 - c. Carcass Quality: _____
 - d. Feed Conversion: _____
 - e. Loin eye area: _____