



4-H Sheep Project

Name: _____ 4-H Club _____

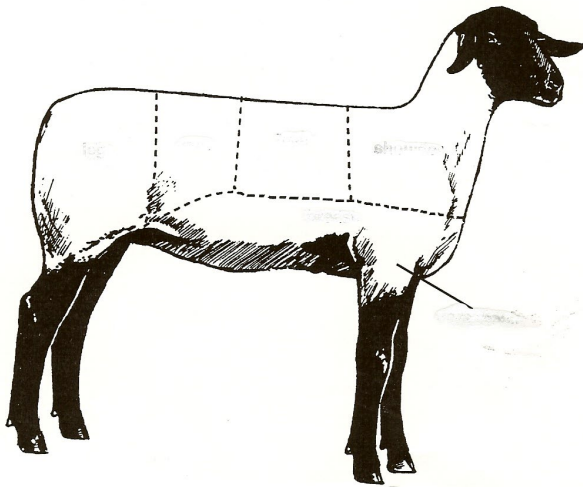
Fill in the blanks on the following sheep breeds:

1. Border Cheviot – Mature body weight on a _____, 160-200 pounds
Ewe, _____ pounds. The breed was developed in _____.
The breed has _____ head and legs.
2. Shropshire - Mature body weight on a ram, _____ and a ewe
_____. Pounds. The breed was developed in _____.
The breed has polled head with _____ on its head and _____.
3. Columbia – Mature body weight on a Ram, _____ and a
_____, 150-225 pounds. It is a cross between a _____ and
_____ which was developed in the U.S. It is know for its _____.
4. Finn Sheep – Mature body weight on a _____, 110-150 pounds and a
_____ 150-200 pounds. Developed in _____ for it's
_____. They have strong _____ instincts.
5. Montadale – Mature body weight on a _____ 200-275 pounds and a ewe is
_____. The breed was developed in the U.S. by crossing a
_____ and a _____. The breed is
_____.
6. Identify which feeds are typically used in sheep rations by placing a check
beside it:

_____ Hay Cube	_____ Distillers Grain	_____ Dry Molasses
_____ Buckwheat	_____ Milo	_____ Cracked Corn
_____ Urea	_____ Blood Meal	_____ Trace Mineral Salt
7. Shots given in the muscle are called _____.

8. The gestation period of sheep is _____ days.

9. Identify the following wholesale cuts:



10. Match the following defects with the characteristic:

_____ Dwarfism

_____ Cryptorchidism

_____ Rectal Prolapse

_____ Entropion

_____ Spider syndrome

A. Deformed legs and spines, lambs die early in life

B. A weakness that causes the sheep to push out part of the rectal tissue.

C. Abnormally short legs, decreased fertility and short life span.

D. One or both testicles are retained in the body cavity.

E. The lower eye lid rolls in and causes eye irritation

11. When the vet prescribes a medication that it is not label for use on sheep it is called _____ use.

12. Label the following breeds according to their wool type: Fine, Medium, Long

_____ Polypay

_____ Suffolk

_____ Montadale

_____ Oxford

_____ Columbia

_____ Targhee

_____ Hampshire

_____ Suffolk

_____ Dorset

13. The second most sheep producing state in the U.S is _____.

Answers to all the questions can be found in the Sheep Resource Handbook 4-H 194R