



4-H Sheep Project

Boone County
Record Sheet D
Grade 3

Name: _____ 4-H Club _____



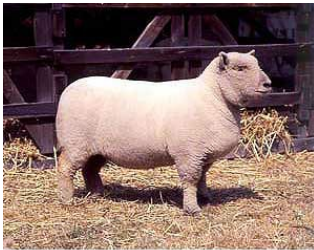
1.



2.



3.



4.



5.



6.

_____ Southdown

_____ Oxford

_____ Cheviot

_____ Dorset

_____ Shropshire

_____ Rambouillet

7. A sheep that is a year old is called a _____.

8. Low quality wool is called _____.

9. Match the following:

Ram Breed

A. Superior mothering ability

Ewe Breed

B. Either ram or ewe

Dual Purpose Breed

C. Meat-type

Answers to all the questions can be found in the Sheep Resource Handbook 4-H 194R

10. Sheep Equipment

S S Y X V J P P Y R M D S X S H
 E Z X C Y R Q S W E S E L C E
 L S T H E R M O M E T E R S A
 A R B O S M S U A Y W L R D T
 C E Y R O R A R F O M E A T L
 S M V C C G T S T K P D W H A
 R M C L B A U X C P A R F D M
 X I J M G Q U U I U D Z X D P
 H R H S B V E L A X L N I B S
 N T M I X D C H F L L A Z M W
 M F D P D L H C V H O I T D O
 K O D Y O S I O J P M S K O D
 E O D O W B T L Z Q L M U X R
 U H W G E G N I R Y S I T Z R
 L W U Z L C M Y O A E W C T F

Used to identify sheep E _ _ T _ _ _
 An instrument used to castrate E _ _ _ _ _ _ _ _ _ _
 Used to lead sheep around H _ _ _ _ _ _ _ _ _ _
 This will keep lambs warm H _ _ _ L _ _ _ _
 Used to remove hoof H _ _ _ T _ _ _ _ _ _
 You can weigh sheep with this S _ _ _ _ _ _
 A vial to give shots S _ _ _ _ _ _
 Used to take temperatures T _ _ _ _ _ _ _ _ _ _
 You may need to dry lambs with these T _ _ _ _ _
 Used to cut off fleece W _ _ _ C _ _ _ _ _ _ _ _

11. Match the following retail cuts with its wholesale part:

- | | |
|---------------------------|-------------|
| 1. _____ Round Steak | A. Shoulder |
| 2. _____ Arm Chop | B. Rack |
| 3. _____ Riblets | C. Loin |
| 4. _____ Double Loin Chop | D. Leg |
| 5. _____ Rack Roast | E. Breast |

12. If you give a lamb medicine in a vein it is called _____.

13. Find the following items on a feed tag:

LAMB STARTER
MEDICATED
 STARTER FOR GROWING LAMBS
 FOR THE PREVENTION OF COCCIDIOSIS
 CAUSED BY Eimeria ovina, Eimeria crandallis, Eimeria
 ovinoidalis, Eimeria ninakohlyakimovae, Eimeria parva
 AND Eimeria intricata IN SHEEP MAINTAINED IN
 CONFINEMENT.
 ACTIVE DRUG INGREDIENT
 LASALOCID (AS LASALOCID SODIUM)
 90 G/TON
 GUARANTEED ANALYSIS
 CRUDE PROTEIN MIN 20.00%
 CRUDE FAT MIN 2.50%
 CRUDE FIBER MAX 10.00%
 CALCIUM MIN 0.75%
 CALCIUM MAX 1.25%
 PHOSPHORUS MIN 0.55%
 SALT MIN 0.40%
 SALT MAX 0.90%
 SELENIUM MIN 0.30 PPM
 VITAMIN A MIN 2,000.00 IU/LB
 INGREDIENT USAGE
 Processed Grain By-Products, Grain Products, Plant
 Protein Products, Forage Products, Roughage Products,
 Molasses Products, Ground Limestone, Salt, Lignin
 Sulfonate, Potassium Sulfate, Magnesium Sulfate,
 Magnesium Oxide, Sodium Selenite, Calcium Propionate,
 Vitamin E Supplement, Vitamin A Acetate, Vitamin D-
 3 Supplement, Zinc Sulfate, Zinc Oxide, Sodium Molyb-
 date, Manganous Oxide, Calcium Iodate, Cobalt Carbon-
 ate, Ferrous Sulfate.
 FEEDING DIRECTIONS
 Lamb Starter contains 45 mgs. of lasalocid per pound.
 Feed continuously as the sole ration to growing lambs from
 1 to 6 weeks of age at the rate of 0.33-1.55 pounds per
 head per day to provide not less than 15 mgs. And not
 more than 70 mgs. Of lasalocid per head per day. Provide
 clean, fresh water at all times.
 CAUTION
 The safety of lasalocid in unapproved species has not been
 established; do not allow horses or other equines access to
 lasalocid as ingestion may be fatal; feeding undiluted or
 mixing errors resulting in excessive concentrations of
 lasalocid could be fatal to sheep.
 MANUFACTURED BY:
 SKILLATHON FEEDS
 NET WEIGHT 50 POUNDS (22.7 KILOGRAMS)
 OR AS SHOWN ON SHIPPING DOCUMENT

Active Drug Ingredient	_____
Maximum mgs/day	_____
Minimum Calcium	_____
Minimum Phosphorus	_____
Crude Protein	_____