



# 4H PHOTOGRAPHY 2022

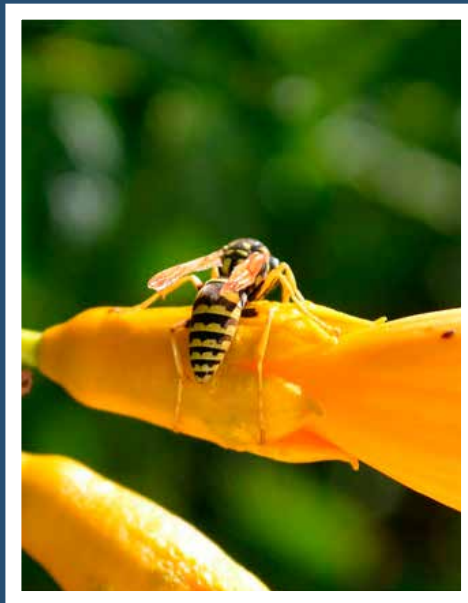


# CHOOSE YOUR BEST PHOTOS

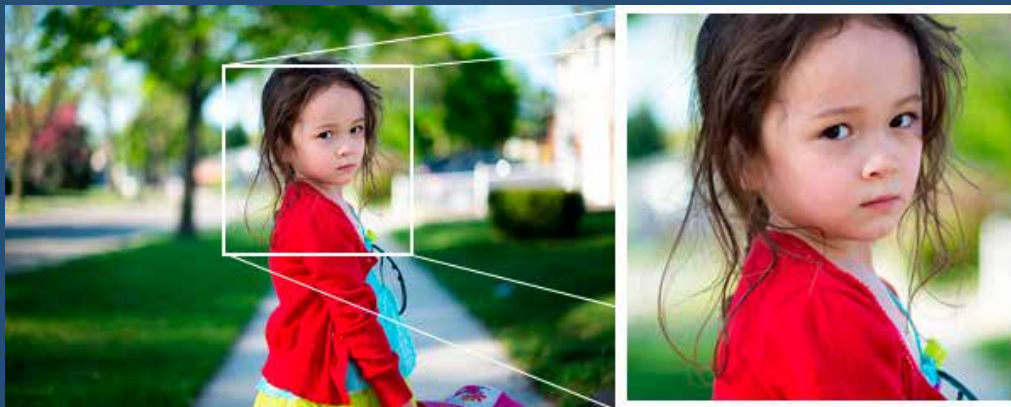
Be sure to look at each photo with a technical eye. Your favorite may not be the best technically and probably isn't the best choice.

# POINTS OF INTEREST AND CROPPING

- Photographs should have a visual point of interest.
- Don't confuse the viewer with too many competing focal points which might overwhelm the main focal point.
- Secondary points of interest can be helpful to lead the eye, too many strong ones will just clutter and confuse.
- Crop your original shot if you need to remove clutter.

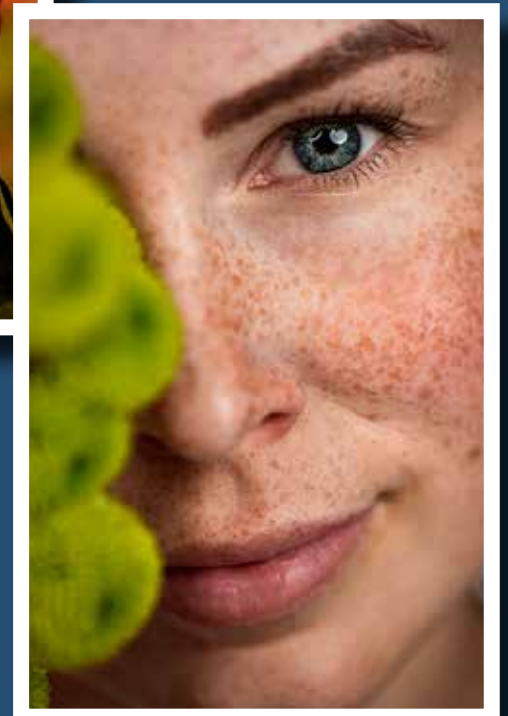
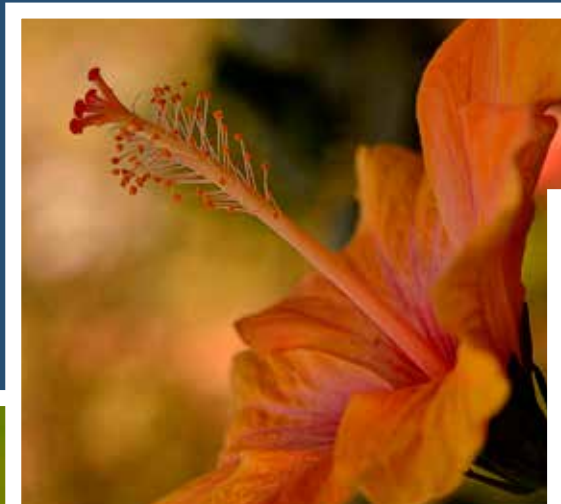




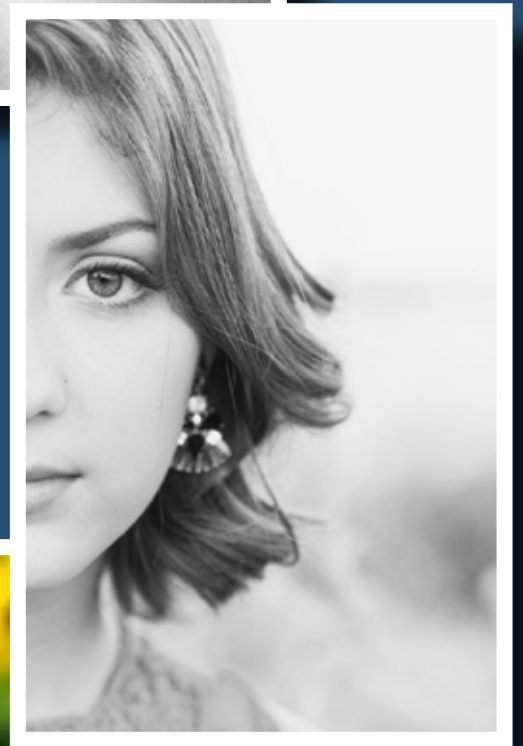


# CREATIVE CROPPING

Creative cropping can add fun. Cropping can help to leave out unnecessary details. You don't always have to center your subject or use the rule of thirds, but make it purposeful. A good rule is don't cut off limbs at the joint.



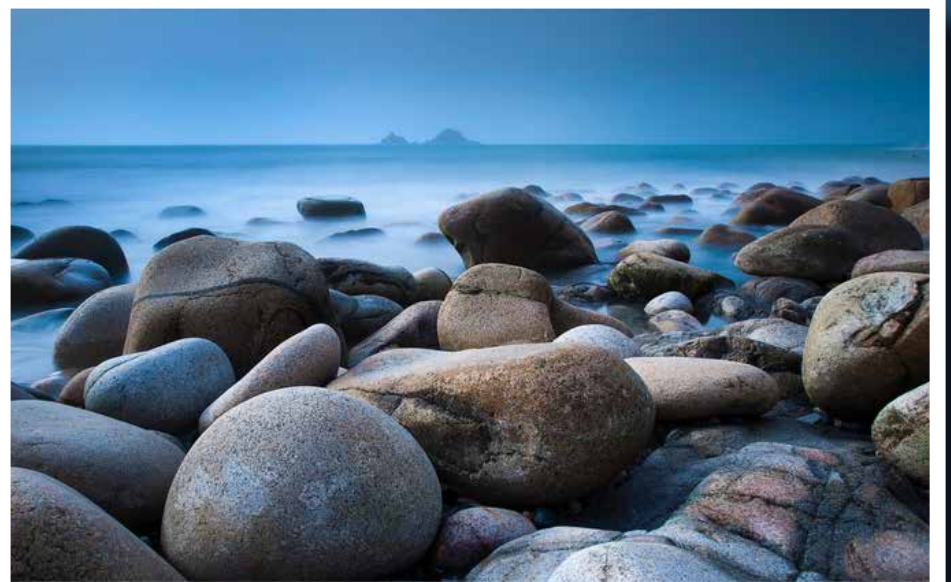




You can achieve a balanced composition and even out the main subject's “visual weight” by including another object of lesser importance to fill the space, if needed.











Remember, if you majorly crop a image, the image will become more pixelated and you will lose quality because you will be blowing it up. The higher resolution of the original shot, the more you can blow it up.







Think about direction when cropping your photos. You want a runner running into the photo. You want a person looking in, not out. The background can also add to the story.



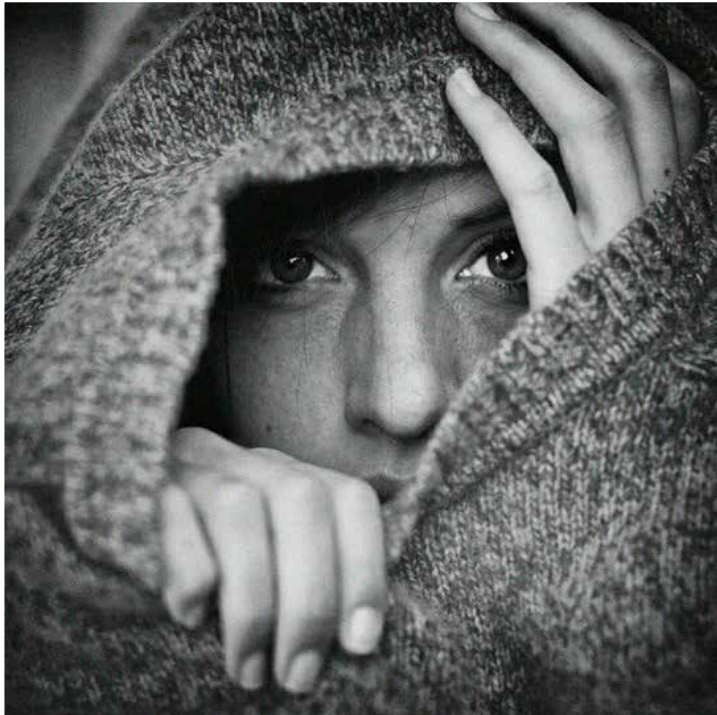




Think about if the background adds or take away from the story. You may be more likely to get a 'wow' if your shots are frame-filling and your subject is spilling over the frame. Make sure you are thinking about the rule of thirds.

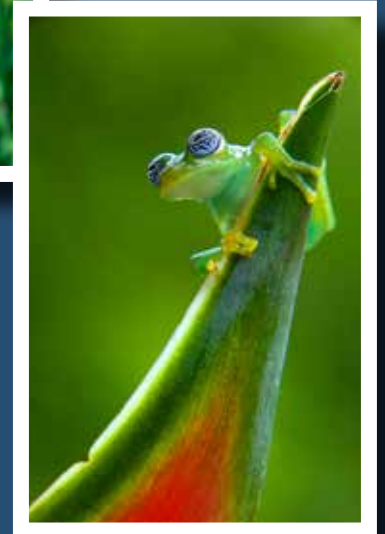






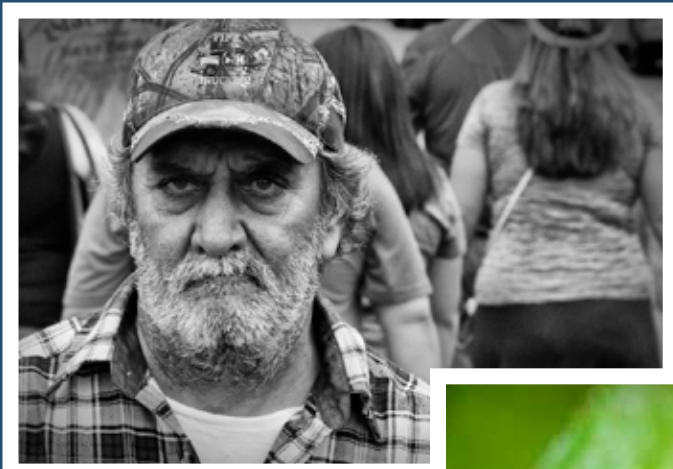
# FOCUS AND SHARPNESS

Make sure your subject is the main focus and that part of the image is sharp. Making your focal point large is not the only way to make it prominent—but it definitely can help. Using contrasting colors can also be a way of setting your point of interest apart from it's surroundings.





Try using your focal lock rather than auto focusing. Tell your camera what to focus on by pressing the shutter halfway down to focus and then frame the shot while still holding it down. Once you've got the framing right, press the shutter the rest of the way and the shot will be taken with the right focusing even though the center of your image might not be your point of interest.

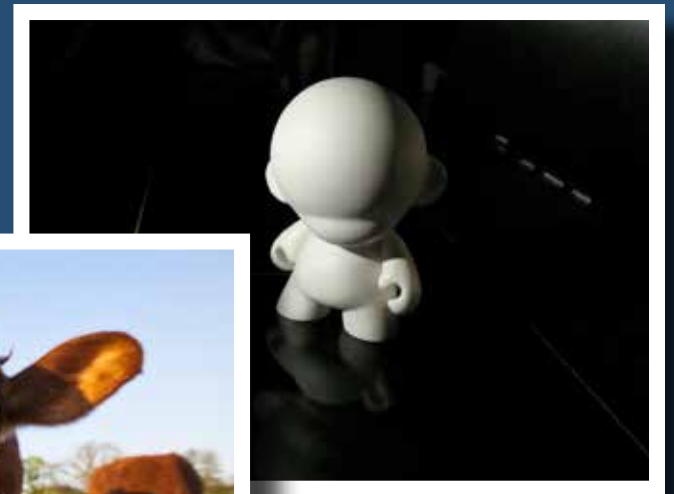
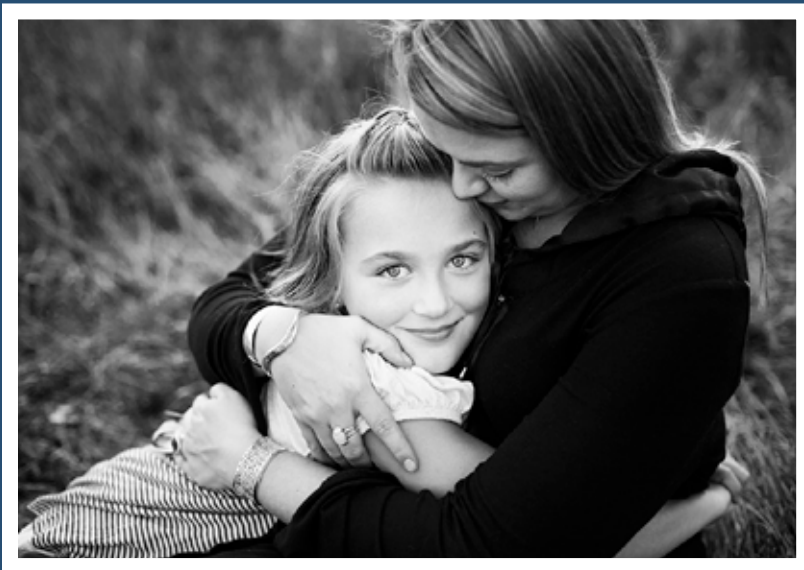




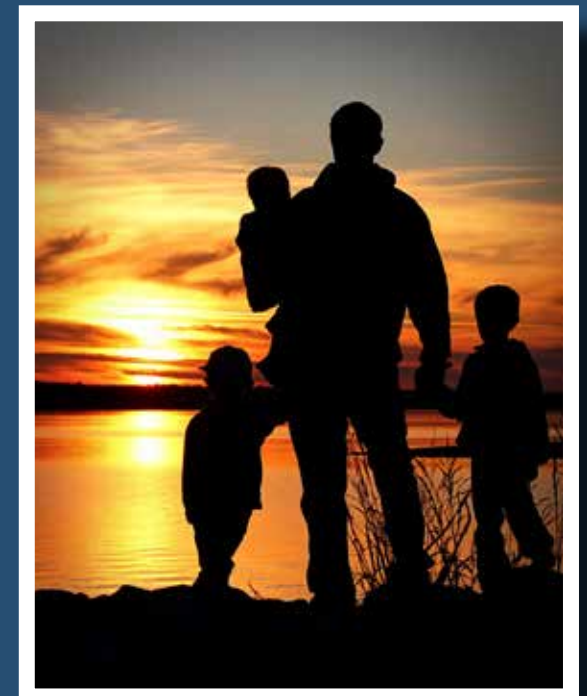
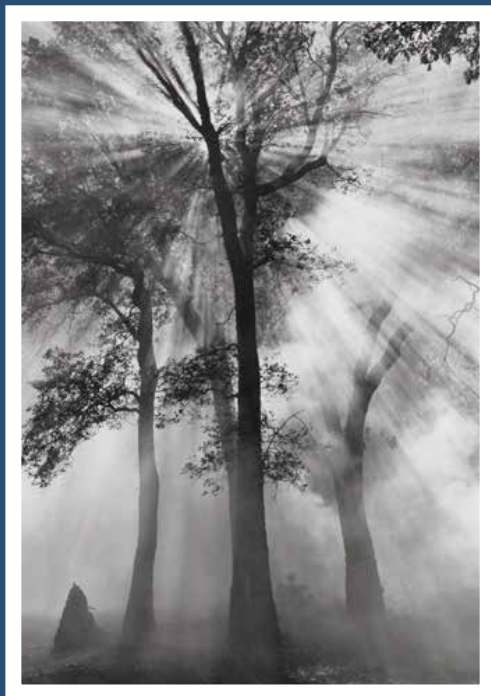


# LIGHTING

Light is one of the most important elements to consider when taking and choosing photos. Too much light will get you a washed out picture. Too little light will make your photo too dark and has too many shadows. When the light gives up more contrast, your photo will have more detail, shape and texture. Make sure and consider how good the light is when choosing your photos.

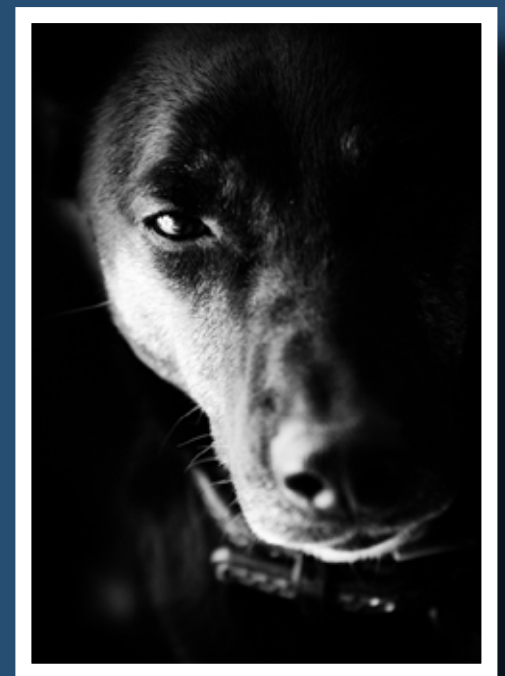
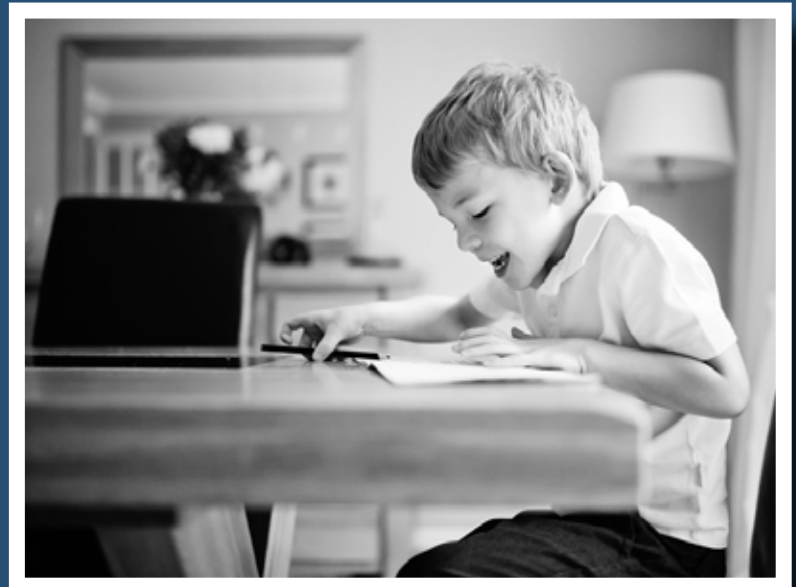


If you use back lighting, be sure there is enough light on your subject. In some cases you may want a silhouette.





If you use side lighting, make it purposeful.

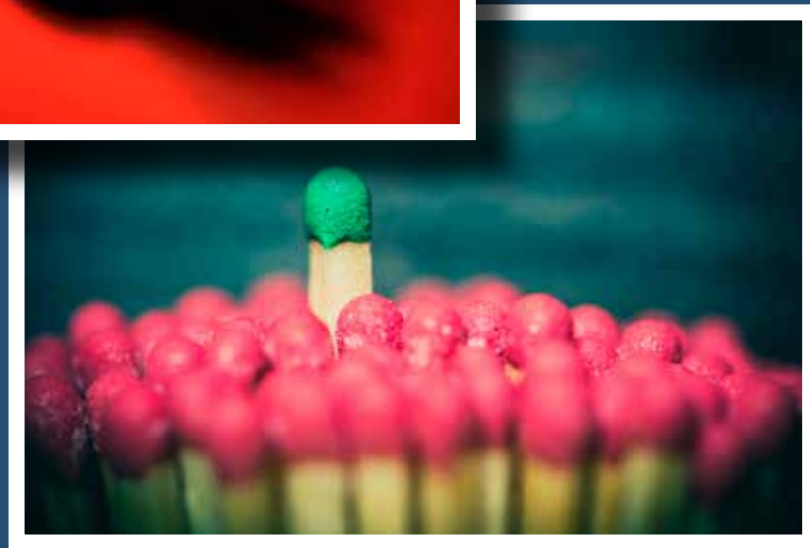


# COLOR BALANCE

The tones and color should work together in harmony or be used in contrast to stir up a mixture of feelings. The color has to be realistic and does not clash on each other. A good mixture of color can produce dramatic effects.







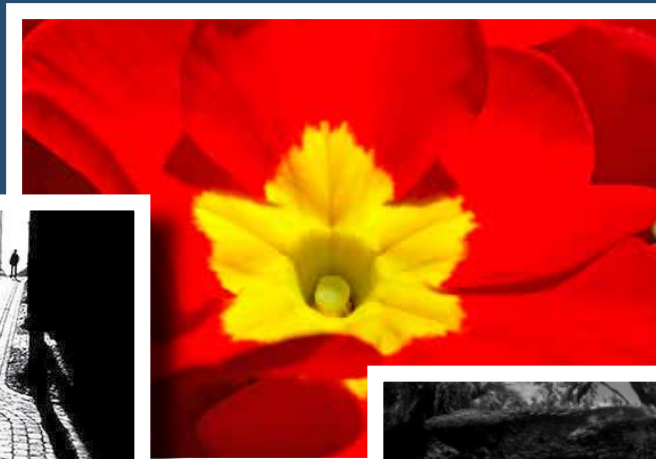
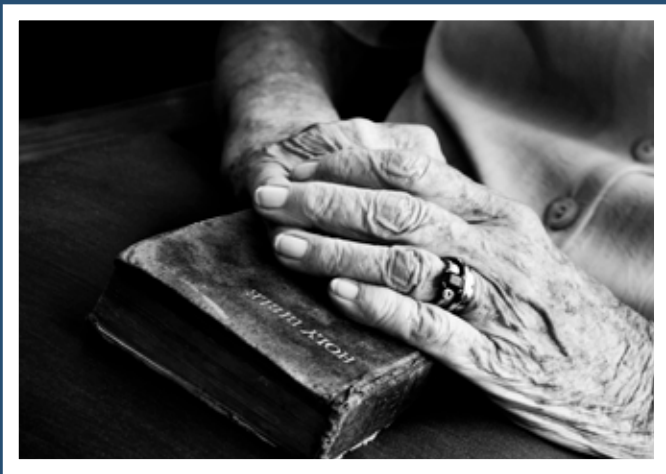






# CONTRAST AND TEXTURE

Contrast is the difference between black (shadow) and white (Highlight) in your images. Without contrast there wouldn't be any differentiation between light and dark—everything would be black, white, or a single shade of gray somewhere in between. Texture refers to the surface of an object, variances in shape, tone and color depth.









# VARIETY ON 10 BOARDS

Make sure you select a variety of images—people, animals, landscapes, still lifes, etc. Having both horizontal and vertical orientations make for a more interesting board.





A black album page titled "Explorations in Color" in a white serif font. The page is decorated with ten color photographs, each with a small white border and a tiny white number in the top-left corner. The photos are arranged as follows: top row (left to right) shows a tree (1), a path with colorful balloons (2), two red Adirondack chairs (3), and a close-up of a white daisy (4). The middle row (left to right) shows a close-up of a pink flower (5), a white flower (6), and a person in a red shirt (7). The bottom row (left to right) shows a close-up of a white flower (8), a close-up of a white flower (9), and a close-up of a white flower (10). The background of the page is a solid black.



# FINAL TIPS

- Make sure your name, age and club are on the back of all entries.
- Complete and turn in your record sheet.
- Make sure your 10 board photos are numbered.
- Make sure you leave at least a 2.5" x 4" space in the lower right corner for the entry label. This label is attached at check-in.
- Make sure your 10 boards have a title.
- Board must be 28" x 22", and horizontal, for the 10 print entries.
- Matting on salon prints are not required, but recommended for a nice presentation. The color should compliment and not compete with your image. Prints can be horizontal or vertical and must be mounted on 16" x 20" board, displayed vertically ONLY.

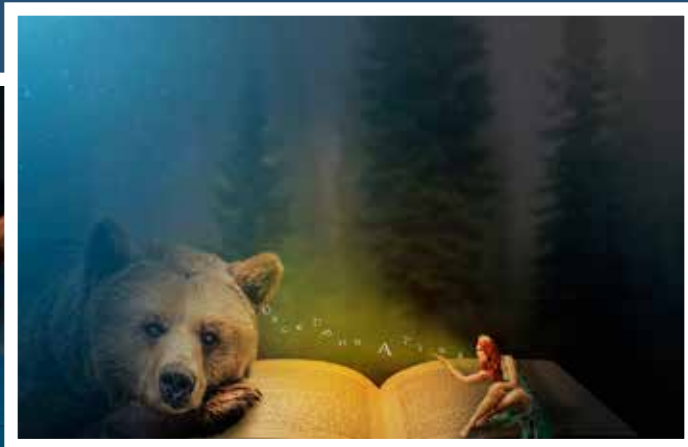


- Do 3 projects in your workbook to turn in at check-in if you have not turned in the quizzes. Each quiz you pass replaces one project in the workbook.
- Be critically when deciding which of your photos are the best. Ask someone for a second opinion if you cannot decide.
- Keep your project as neat and clean as possible. Presentation can be almost as important as your photos.
- Do not repeat images in different categories. If you used an image in color, DO NOT use the exact same image on a black & white board. Some judges do not like it if the same image is used as a salon and on a 10 board. If you like the subject, use one of your other versions.
- Make sure your photos are securely mounted.
- Read through all the rules of the project again.

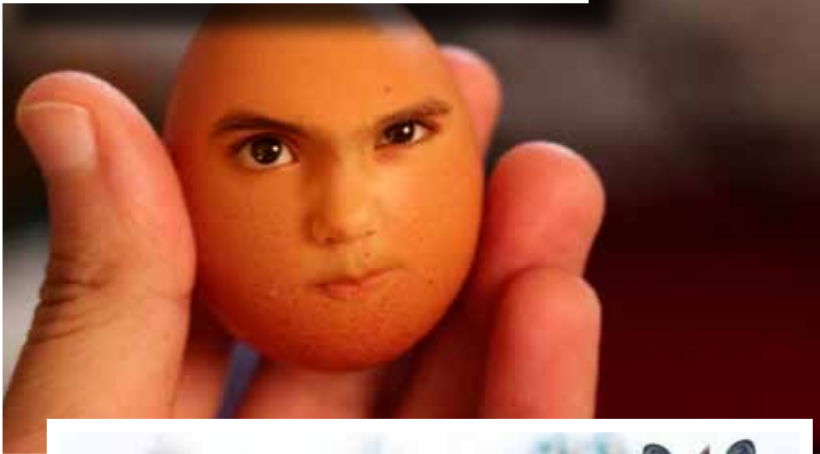
- Your creative/experimental salon must include original photograph(s) on the back of the board and have a listing of steps and/or procedures used to create the end product. Make sure it is obvious you changed the photo.

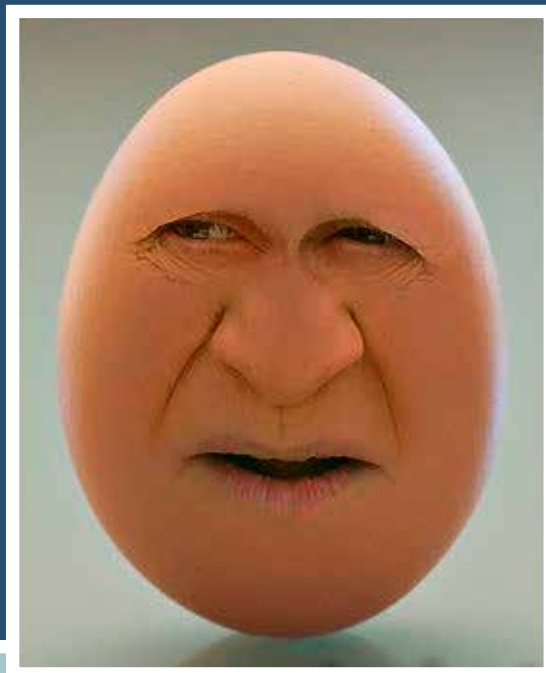












**4-H PHOTOGRAPHY**  
**Photo Print Board Scorecard**

4-H 485p-W

2/22

Name (Last, First):

Level/Division/Class:

County:

Club:

Placing: \_\_\_\_ Merit/Honor \_\_\_\_ Blue \_\_\_\_ Red \_\_\_\_ White \_\_\_\_ Participation  
Black and White \_\_\_\_ Color \_\_\_\_

**EXHIBIT:**

\_\_\_\_ GREAT EXHIBIT! \_\_\_\_ NICE EXHIBIT \_\_\_\_ NEATLY DONE

**LABELS:**

\_\_\_\_ EXCELLENT \_\_\_\_ GOOD \_\_\_\_ NEEDS TO IMPROVE  
\_\_\_\_ Must number photo \_\_\_\_ Need space for name label \_\_\_\_ Wrong title for project

**PHOTO:**

PHOTOS SHOW IMAGINATION: Excellent Good Needs to improve

COLOR OR TONE CONTRAST: Excellent Good Needs to improve

VARIETY OF SUBJECTS: Excellent Good Needs to improve

KNOWLEDGE OF COMPOSITION: Excellent Good Needs to improve

# \_\_\_\_ Needs to be a vertical/horizontal (circle one) # \_\_\_\_ Use "rule-of-thirds" placement of subject or horizon line

# \_\_\_\_ Shows good composition (Avoid placing them "dead center")

# \_\_\_\_ Good use of framing subject

# \_\_\_\_ Interesting subject!

# \_\_\_\_ Subject is too close for the camera used

# \_\_\_\_ Digital Resolution/File Size

# \_\_\_\_ Closer to subject

# \_\_\_\_ Avoid bright background/boards

# \_\_\_\_ Need to use flash to fill in light on subject

# \_\_\_\_ Watch out for cluttered background

# \_\_\_\_ Leave space for subject to move in picture

# \_\_\_\_ Photos should have a definite center of interest.

# \_\_\_\_ Appears to be out of focus or some camera movement

Ask yourself, "What is this a picture of?"

# \_\_\_\_ Could improve interest with a different camera angle

# \_\_\_\_ Hold camera level – the horizon should be level

BEST PHOTOS: \_\_\_\_\_

DESIRABLE PHOTOS: \_\_\_\_\_

OTHER COMMENTS:

# Judges Score Cards



**4-H PHOTOGRAPHY**

4-H 485-W

**Salon Print Scorecard**

2/22

Name (Last, First):

Level/Division/Class:

County:

Club:

Placing: \_\_\_\_ Merit/Honor \_\_\_\_ Blue \_\_\_\_ Red \_\_\_\_ White \_\_\_\_ Participation

Black and White \_\_\_\_

Color \_\_\_\_

	Excellent	Good	Needs to Improve
1. Storytelling Ability.....(30%) <ul style="list-style-type: none"><li>• Clarity of story told</li><li>• Interest value</li></ul>			
2. Composition.....(30%) <ul style="list-style-type: none"><li>• Arrangement of pictorial elements</li><li>• Eye appeal</li><li>• Attention-getting value</li><li>• Strong center of interest</li></ul>			
3. Photographic quality.....(30%) <ul style="list-style-type: none"><li>• Pleasing contrast or color</li><li>• Proper exposure</li><li>• Proper focus</li></ul>			
4. Photo securely mounted and displayed attractively...(10%) <ul style="list-style-type: none"><li>• Matte colors complementary</li></ul>			

**COMMENTS:**

## 4-H PHOTOGRAPHY

4-H 483d-W

### Creative/Experimental Digital Scorecard

2/22

Name (Last, First):

Level/Division/Class:

County:

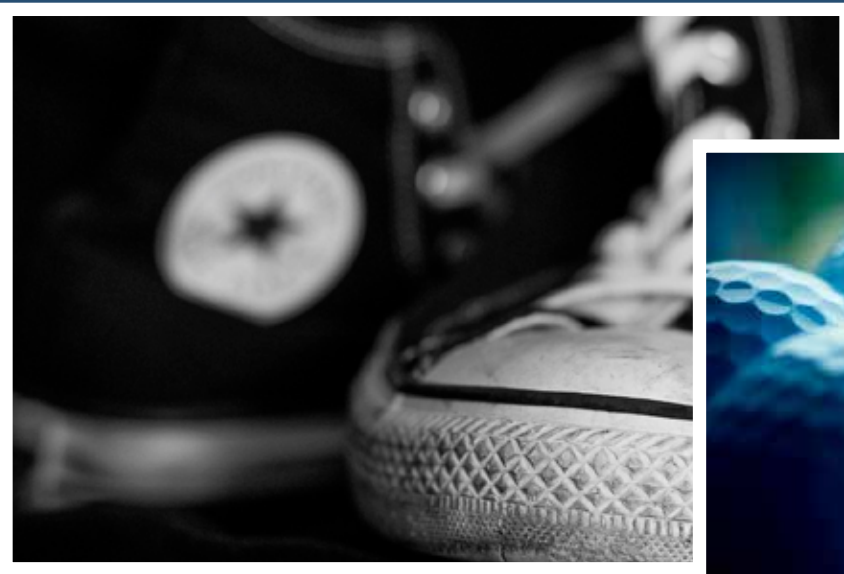
Club:

Placing: \_\_\_\_\_ Merit/Honor \_\_\_\_\_ Blue \_\_\_\_\_ Red \_\_\_\_\_ White \_\_\_\_\_ Participation

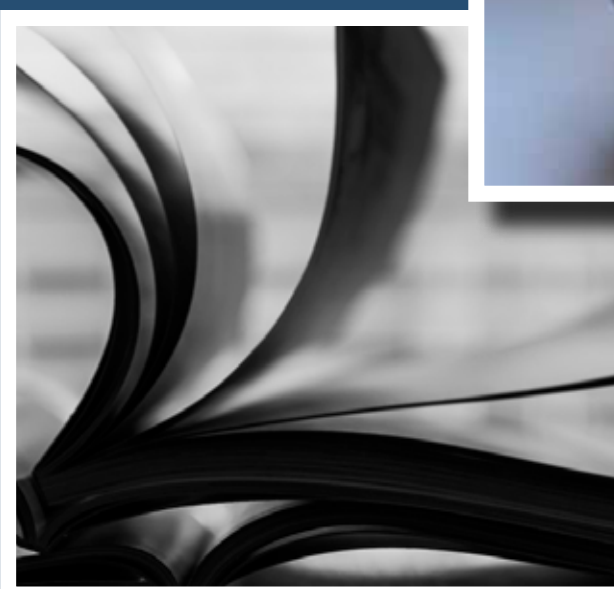
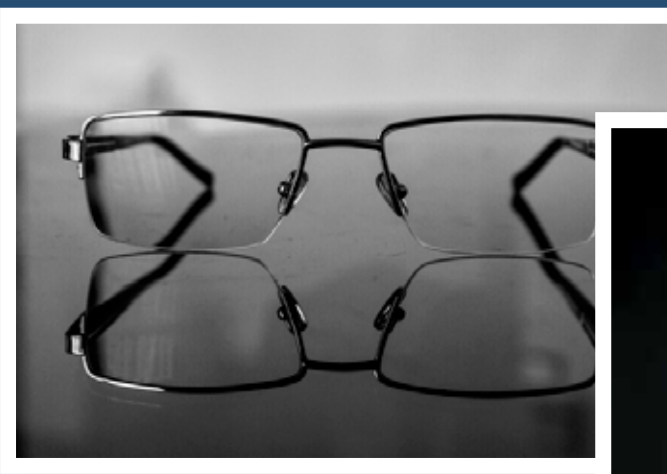
	Excellent	Good	Needs to Improve
1. Photo shows imagination.....(30%)			
2. Photo shows knowledge of composition.....(30%)			
3. Photographic quality.....(30%) <ul style="list-style-type: none"><li>• Pleasing contrast or color</li><li>• Proper exposure</li><li>• Interesting lighting</li><li>• Proper paper</li><li>• Proper focus</li><li>• Proper resolution setting</li><li>• Proper file size</li></ul>			
4. Photo securely mounted and displayed attractively.....(5%)			
5. Label neat and complete.....(5%)			
6. Before and After Example			

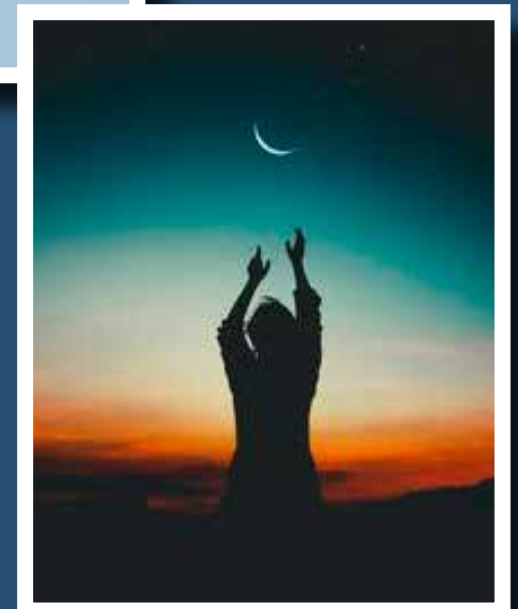
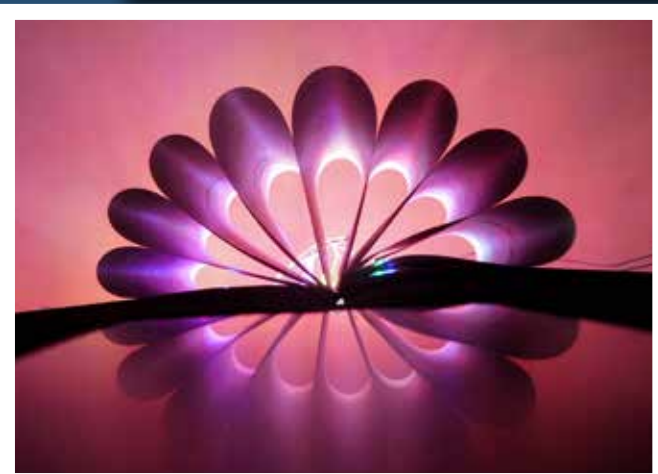
COMMENTS:

# BE CREATIVE AND HAVE FUN!











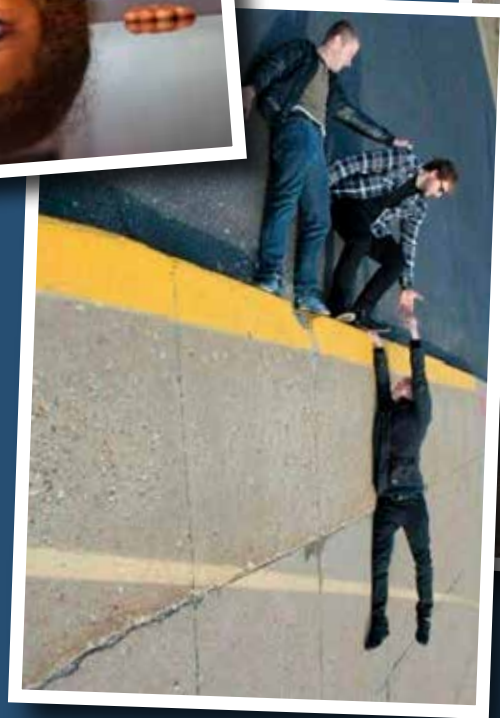




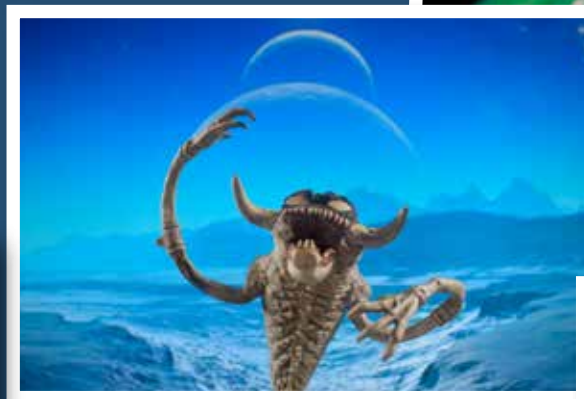




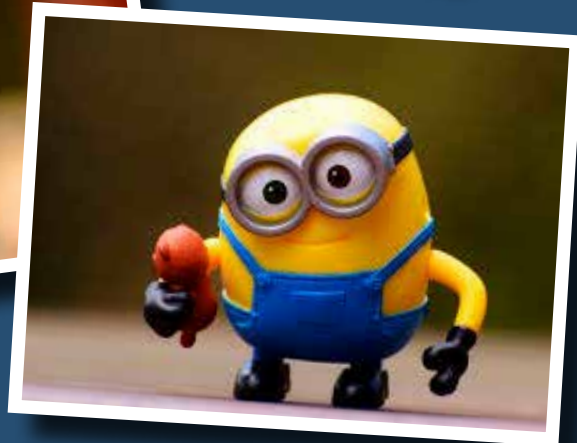




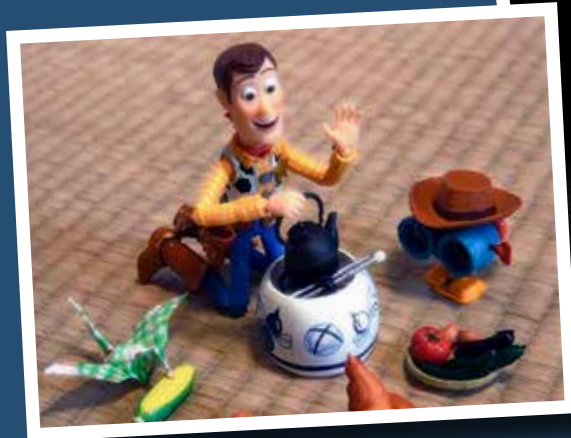








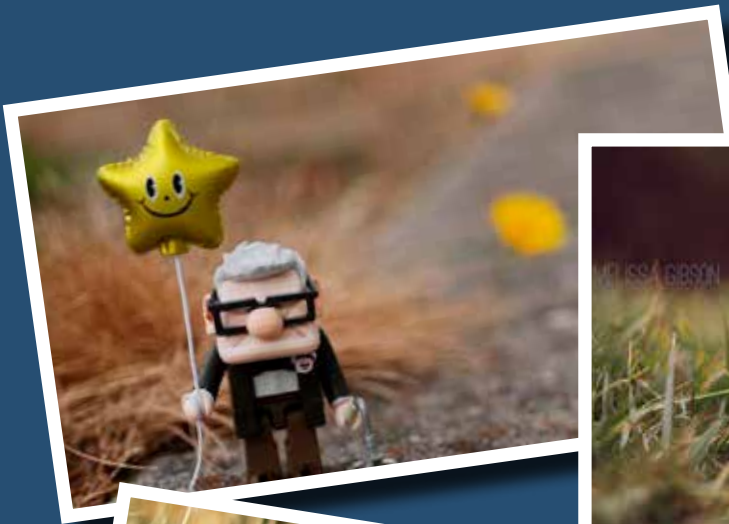




















# JUDGING

**Tuesday, July 12, 2022**

**Boone County Farm Bureau Inc. Community Building**

**CHECK-IN JUDGING (Times are approximate)**

**Grades 3-5**

**7:30-8:00 am**

**Grades 6-8**

**9:00-9:30 am**

**Grades 9-12**

**10:30-11:00 am**

