

# PURDUE EXTENSION BOONE COUNTY

## 4-H Goat Worksheets

Grade 4-A



Name: \_\_\_\_\_

4-H Club: \_\_\_\_\_

Date: \_\_\_\_\_

### Choosing An Animal

1-6. ID the following Breeds of Goats:

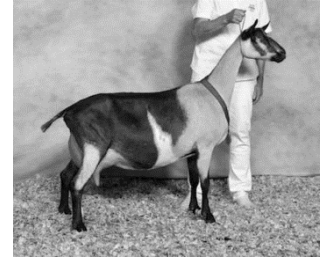
1. \_\_\_\_\_



2. \_\_\_\_\_



3. \_\_\_\_\_



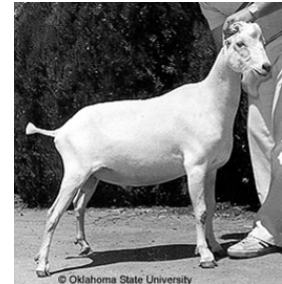
4. \_\_\_\_\_



5. \_\_\_\_\_



6. \_\_\_\_\_



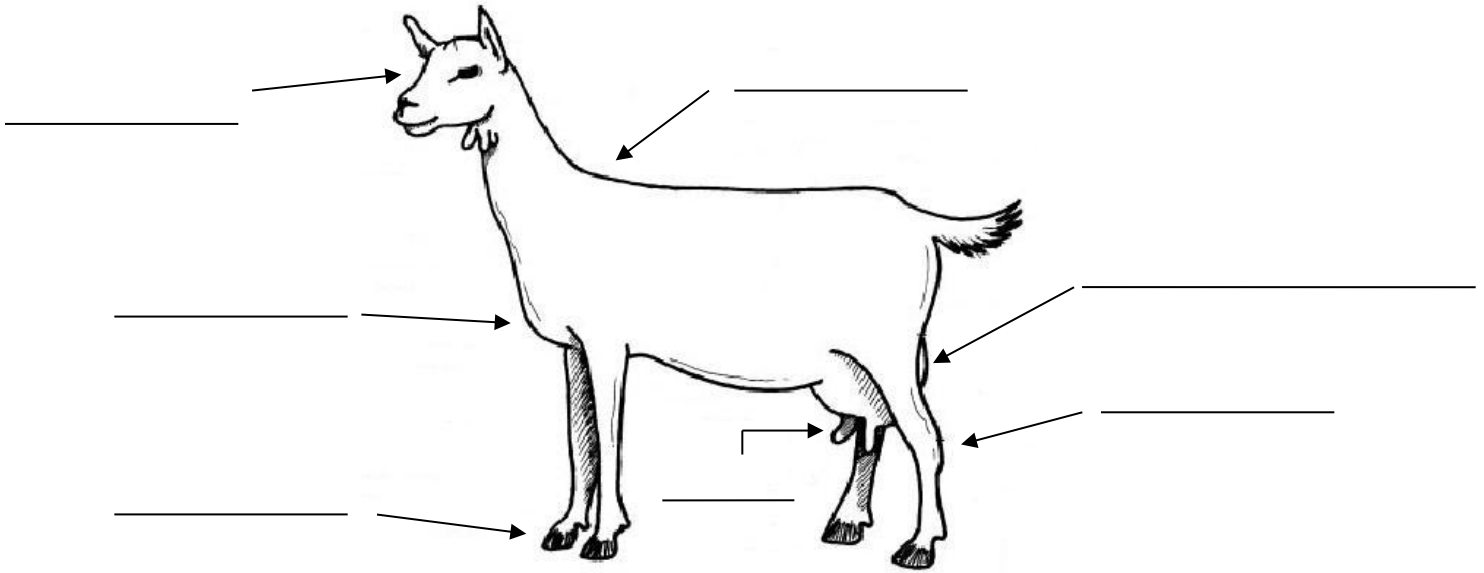
7. Originated in the Alps region, a fairly large and rangy goat. \_\_\_\_\_

8. Medium-sized animal, many color combinations and developed in the US. \_\_\_\_\_

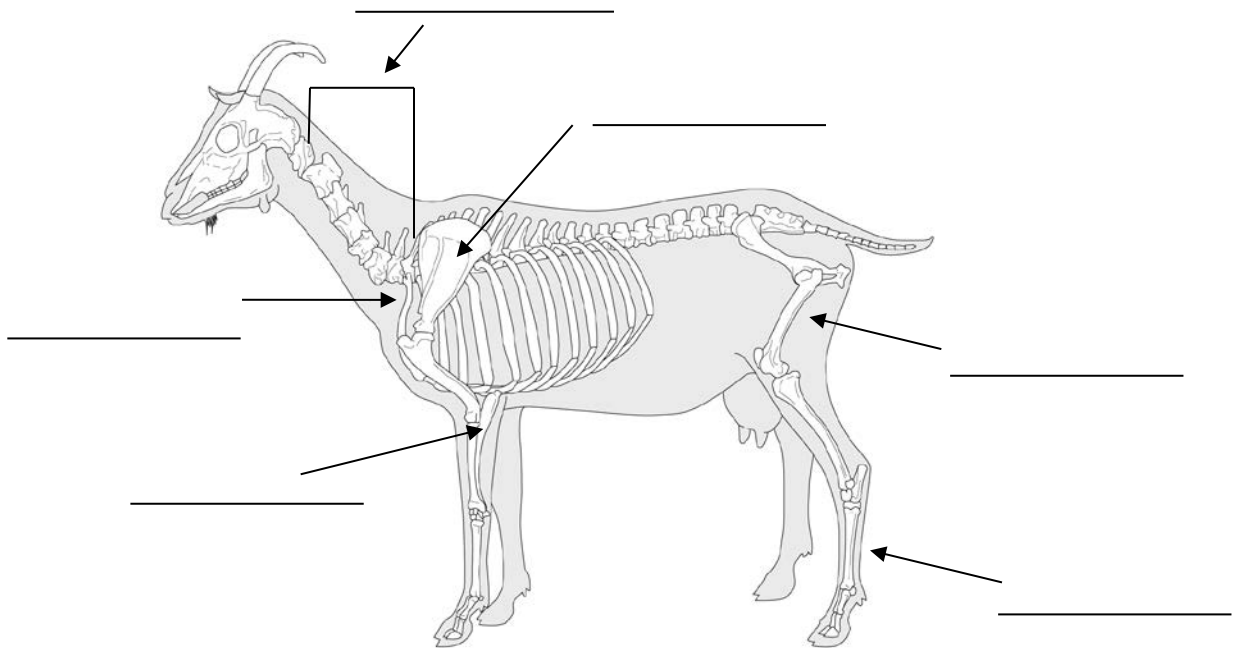
9. Much smaller than the standard dairy goat breeds, known to produce approximately 1 quart of high fat milk per day for up to 10 months. \_\_\_\_\_

10. Sable – Mature does must be at least \_\_\_\_\_ inches tall at the withers and weigh \_\_\_\_\_ lbs.  
Mature bucks must be at least \_\_\_\_\_ inches tall at the withers and weigh \_\_\_\_\_ lbs.

11.-17. Label the Following:



18.-23. Label the following:



Answers to these questions can be found in the "Goat Resource Handbook" 4-H 135R