



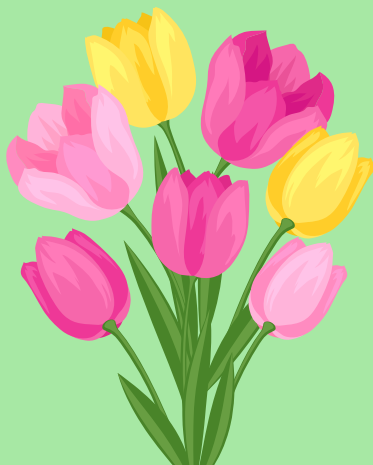
The Scoop



Boone County 4-H Newsletter



Hello May



Upcoming Events

**May 8th: Feeder Calf ID Day from 6-7PM
at the Boone County Fairgrounds (REMC
Building)**

**May 15th: 4-H Animal Enrollment
Deadline**

4-H Camp- June 11th-13th

4-H Academy- June 11th-13th

4-H Round Up- June 23rd-25th

July 20th-26th: Boone County 4-H Fair

August 1st-17th: Indiana State Fair



**SOUNDTRACK
OF SUMMER**

PRESENTED BY
Get Prepared Indiana

INDIANA STATE FAIR

**AUG. 1-17, 2025
CLOSED MONDAYS**





IMPORTANT

May 15th Deadline Reminders



- **Animal Enrollment in 4HOnline**
- **Leasing Agreements**
- **Livestock Location Forms**
- **DNA Submissions (for State Fair)**

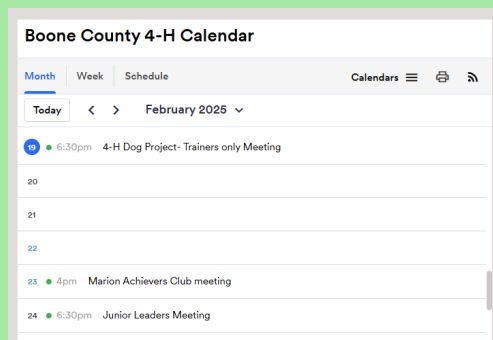


**Submit information
to the Purdue
Extension–Boone
County office**

**Questions?? Contact the Purdue Extension–Boone
County office at 765–482–0750 or
booneces@purdue.edu**

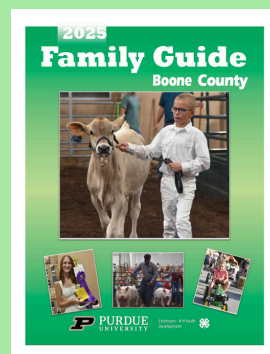
Click the link below to access the latest 4-H information!

2025 Boone County 4-H Handbook!



4-H Calendar and Website!

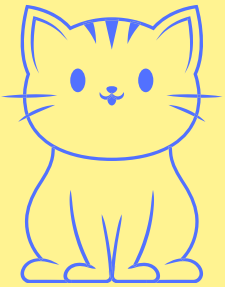
New Member Resource Page



2025 4-H Fair Schedule!

Animal Enrollment

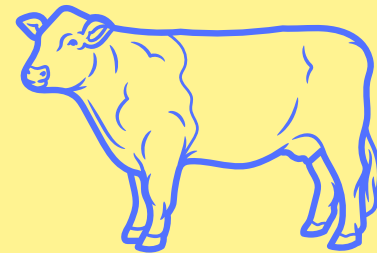
The animal enrollment deadline is May 15th.
Click the link for the desired animal for
enrollment instructions.



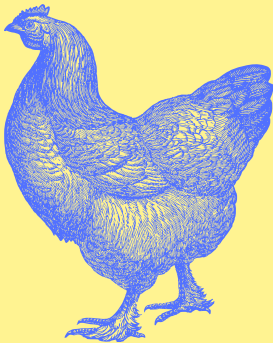
Beef

Cat

Dairy.

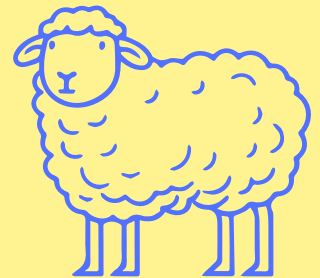


Dog



Goat- Dairy.

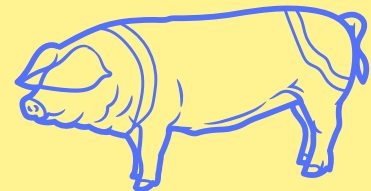
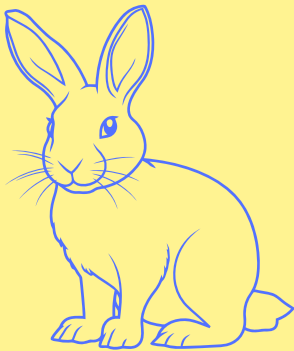
Goat- Meat



Goat- Utility.

Horse & Pony.

Llama/Alpaca

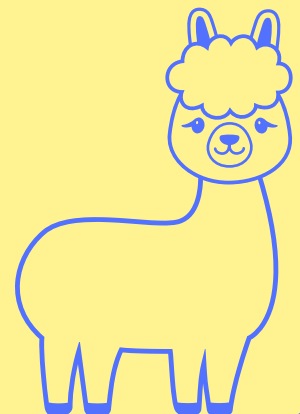
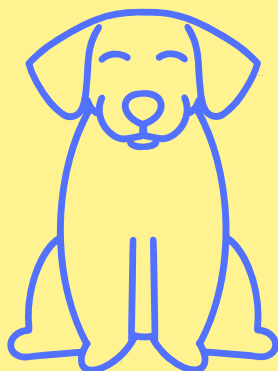


Poultry.

Rabbit

Sheep

Swine



Livestock Location Forms

Boone County 4-H members who are showing livestock that are being housed at another location other than your home **MUST** fill the following form out by May 15th, 2025.

click
here

[Livestock Location Form](#)



HAVE POSTER QUESTIONS?

MAY 5TH IS THE DAY TO ASK!

LET'S TALK POSTERS!

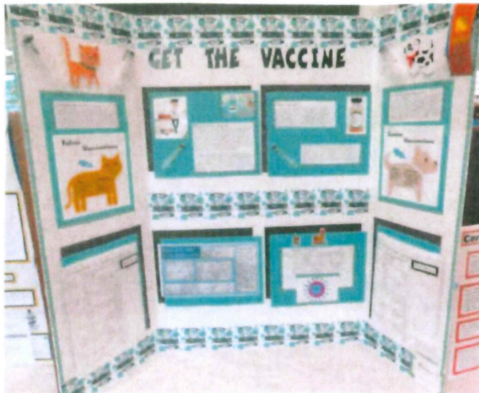


Tips for Making 4-H Posters with Impact!

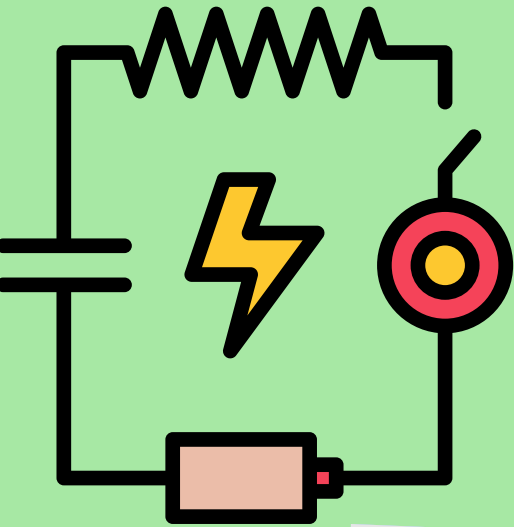
Workshops will be held from 7:00 p.m. until 8:00 p.m. in the small dining room in the Community Building.

March 27, 2025 May 5, 2025 and June 6, 2025

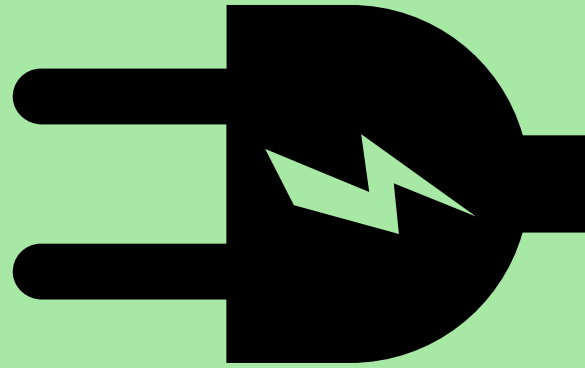
walksa@tds.net Sharon Walker (317)-513-0806 (317)-769-6660



4-H Supplies Available



**Electric &
MINI 4-H
Kits**



**Poster Board
(22" X 28")
\$4**

**Plastic Sleeve
(Poster & Salon Size)
\$1**



**at the Purdue
Extension Office-
Boone County**

**Monday- Friday from 8-4PM.
We accept cash or check.**



4-H ROUND-UP!

June 23-25, 2025
Grades 7-9

[MORE INFO HERE](#)



ACADEMY @ PURDUE

June 11-13, 2025
Grades 9-12

[MORE INFO HERE](#)



STATE 4-H BAND

Where: Purdue University

When: June 21-23, 2025
(Registration due May 9th)

[MORE INFO HERE](#)



STATE 4-H CHORUS

Where: Purdue University

When: June 21-24, 2025
(Registration due May 9)



[MORE INFO HERE](#)



MISS BOONE COUNTY *Queen Program*

Why Enter?

This contest isn't just about wearing a crown – it's about transforming yourself. You'll sharpen your interview techniques, master public speaking, and skyrocket your confidence in ways you never imagined. And, along the way, you'll meet incredible young women just like you, who share your passion for 4-H and community involvement.

Who Can Enter?

Are you 18 to 22 years old by June 1, 2026? If so, *you could be the next Miss Boone County!* You don't need to live in Boone County, but you must be an active or former Boone County 4-H member with at least four completed 4-H projects to your name. Plus, you should be involved in a community organization because we value leaders who give back! Your role doesn't stop when the fair ends – you'll represent Boone County at events throughout the year and take on the ultimate challenge by competing in the Miss Indiana State Fair Program.

Your Time to Shine!

If you're ready to step into the spotlight, gain real-world skills, and have a blast while doing it, then the Miss Boone County 4-H Fair Queen Contest is calling your name. Join us for an unforgettable journey filled with laughter, friendship, and memories you'll treasure forever. We can't wait to see you shine!



INTERESTED IN
COMPETING? SCAN THIS
QR CODE TO ACCESS OUR
APPLICATION!
www.missboonecounty.org

*click
here!*

JULY 18TH | 7PM | WITHAM PAVILION

ALL
HAIL

PURDUE
DAY OF GIVING
THANK YOU!

DAYOFGIVING.PURDUE.EDU

CATTLE PRODUCER INSIGHTS

SURVEY FOR CURRENT AND FUTURE PRODUCERS



THIS SURVEY WILL HELP ASSESS THE NEEDS OF THE CATTLE INDUSTRY IN INDIANA. THE PURDUE BEEF TEAM, IN PARTNERSHIP WITH THE INDIANA BEEF CATTLE ASSOCIATION, SEEKS TO UNDERSTAND THE DISTRIBUTION OF CATTLE PRODUCERS ACROSS THE STATE AND GAIN INSIGHT INTO THE TYPES OF OPERATIONS CURRENTLY IN PLACE. ADDITIONALLY, THE SURVEY WILL HELP IDENTIFY ESSENTIAL INFORMATION, PROGRAMS, AND AREAS FOR IMPROVEMENT WITHIN THE INDUSTRY.



If you are in need of accommodations to attend this program, please contact (names) prior to the meeting at (contact info) two weeks in advance.

If you need an interpreter or translator, please contact (name and contact information) two weeks in advance.

SURVEY LINK: <https://purdue.link/INBeefNeeds2025>

Purdue University prohibits discrimination against any member of the University community on the basis of race, religion, color, sex, age, national origin or ancestry, genetic information, marital status, parental status, sexual orientation, gender identity and expression, disability, or status as a veteran.

EXPERIENCE 4-H

CROP & SOIL SCIENCE WORKSHOP



June 11, 2025



9:00 a.m.-4:00 p.m.

Lunch provided



Purdue University Crop Diagnostic Training
& Research Center
Agronomy Center for Research & Education
4530 - US 52
West Lafayette, IN 47906

**Open to youth in grades 3-12.
4-H membership is not required.**

Interactive Activities



- ✓ Experience a soil pit to study layers (soil horizons) of soil
- ✓ Agronomic Scavenger Hunt
- ✓ Grain storage safety
- ✓ Determine corn and soybean growth stages and how to put this skill to use



- ✓ Sweep net to scout for insects in a forage field
- ✓ Soil health demonstrations
- ✓ Understanding pesticide labels and what personal protective equipment is needed



- ✓ High Tech Ag: Sensors and Drones
- ✓ Proper soil sampling: How to interpret soil test results and determine if fertilizer and/or lime are needed.

Sponsored by

Register by June 4, 2025 at:

<https://20254HCropSoilScienceDayatDTC.4honline.com>

Or scan
this QR
code:



 **Channel.**
petersónseed

Purdue University prohibits discrimination against any member of the University community on the basis of race, religion, color, sex, age, national origin or ancestry, genetic information, marital status, parental status, sexual orientation, gender identity and expression, disability, or status as a veteran. If you are in need of accommodations to attend this program, or if you need an interpreter or translator, please contact Jon Charlesworth by 6/4/2025 at 765-884-0140 or charles6@purdue.edu.

Did You Know??

Boone County



Pork Producers



- **Endorses Numerous 4-H Events**
- **Provides Swine Building Updates - Like
New Gates**
- **Distributes \$5,000 in Academic
Scholarships Yearly**
- **Supports Student Agricultural
Academic Endeavors**

**To continue in these efforts YOUR HELP is needed!
Current active membership is down, and it is time
to start passing the torch. If you are interested,
please drop by the Pork Producer Building or reach
out to:**

Bob McQuern @ 317.452.3322 or mcquerd@gmail.com

Duane Tommas-Dolick @317.797.2340 or dhtd1966@gmail.com

**NOTE: You do not have to own/raise hogs to be a member –
ALL are welcome! Only requirement - desire to be INVOLVED!**

Volunteers Needed



Woodworking



Aerospace



**Photography
co-leader**

**Additional Leader for Center Trailblazers
Additional leader for the Union Innovators**



If you are interested in volunteering in one of
these roles email
Stephanie Gay, 4-H Youth Extension educator
at stephanieg@purdue.edu or check out our
NEW Volunteer Website!



2025 Scholarship

- Boone County Resident
- Full-time college sophomore or higher
- Pursuing a degree in horticulture, agriculture, plant science, forestry, etc.
- Minimum GPA of 3.0
- See full requirements on our website.



I can save you \$1000!

Scan me to find all the info!



Application Deadline

June 1, 2025

Find Scholarship
Guidelines and
Application at:

<https://mastergardenersboonecounty.org/scholarships/>

Non-competitive

Boone Co.

Hands-On Learning

MINI 4-H

2025



Introduction to
the 4-H Program



Mark Your Calendars Now For Non-Animal Mini 4-H Meetings:

Wednesday, March 19

Tuesday, April 15

Wednesday, May 7

Thursday, June 19

All meetings are from 6:00 -7:00 p.m.

At the Farm Bureau Inc Community Building Auditorium on the 4-H Fairgrounds

Make New
Friends

FREE!

Animal Project Meetings will be set soon and members will be emailed those dates.

Mini 4-H members are welcome to attend any and all meetings no matter what projects they are signed up for.

Mini 4-H Leaders

Pandora Taylor & Dana Ford

765-617-8344

pandora@purdue.edu

Purdue University prohibits discrimination against any member of the University community on the basis of race, religion, color, sex, age, national origin or ancestry, genetic information, marital status, parental status, sexual orientation, gender identity and expression, disability, or status as a veteran.

Boone County Extension Homemakers Open Show

Want to put your 4-H project in the Open Show?



To see if your 4-H project is eligible for the Open Show check out the Open Show Book here!

4-H projects entering the Open Show can be checked out of the BCA building and taken to the Farm Bureau Community Building for check-in on Wednesday, July 23 from 4-7 p.m.

This applies only to 4-H projects entering the Open Show. Per Boone Co. 4-H general guidelines #23 ... If any person removes an exhibit from the assigned exhibit area before the designated release time of the project, they will be barred from exhibiting in that project at the county fair for one year.

**Open Show Exhibit check - out will be
Saturday, July 26
from 4:30 - 5:30 p.m.**



First Tuesday

April 1st 6:30 pm - Grow Your Own Veggies –
Learn how easy it is to grow veggies, in ground, raised beds. Not much space to grow, use containers.



May 6th 6:30 pm – Landscaping & Native Plants

Learn about landscaping and native plants.

Program presented by Zach Neff,

land stewardship manager with NICHES

Land Trust.



June 3rd 6:30 pm – Food Dehydration

Learn methods to preserve your

food for great flavor and long lasting.



Held in the Farm Bureau Building on the 4-H Fairgrounds

Free but must register one week before the event by call Purdue Extension office – 765-482-0750 or email to booneces@purdue.edu

Boone County Master Gardeners Spring Plant Sale

May 3, 2025 9am - 1pm

Annual, Perennial, Vegetable Plants
& Native Plant Seeds

Cash only for purchases



Farm Bureau Community Bldg
Boone Cty 4-H Fairgrounds

BOONE COUNTY EXTENSION HOMEMAKERS

Lunch & Learn

Presented by
Purdue Extension

MAY 13, 2025

Bring your own lunch and join us
for this FREE program!!

11am- Chair Exercises for Seniors

Tailored for seniors seeking to enhance their mobility, strength, and balance, all from the comfort of a chair. These safe, low-impact exercises cater to all fitness levels, ensuring participants can gradually build their abilities or increase intensity as needed. The program emphasizes adaptability, offering modifications to make exercises easier or harder. Perfect for those looking to stay active and healthy without the strain of standing workouts.

Mandy Gray, Hancock County

Noon- Reducing Stress Through Gardening

Did you know that gardening is a great way to relieve stress? If you have a small patio or a large garden, research shows gardening can reduce stress and improve your mood. The sunlight, fresh air, and influx of vitamin D is good for your health. Let's explore this stress reducing activity and make plans for your home area.

Susan Peterson, Hamilton County



Extension - Health and Human Sciences

Reserve your spot by May 9th by calling
765-482-0750 or email
booneces@purdue.edu
Boone County 4-H Fairgrounds in the
Farm Bureau Community Inc. Building
1300 E 100 S; Lebanon, 46052

Purdue University is an Equal Opportunity/Equal Access University.

If you are in need of accommodations to attend this program, please contact Pandora Taylor prior to the meeting at 765-482-0750 and pandora@purdue.edu by 5/9/25. If you need an interpreter or translator, please contact Pandora Taylor prior to the meeting at 765-482-0750 and pandora@purdue.edu by 5/9/25.

Purdue University prohibits discrimination against any member of the University community on the basis of race, religion, color, sex, age, national origin or ancestry, genetic information, marital status, parental status, sexual orientation, gender identity and expression, disability, or status as a veteran. If you are in need of accommodations to attend any program, please contact Stephanie Gay prior to the meeting at 765-482-0750 and stephanieg@purdue.edu. For special dietary needs contact Stephanie Gay at 765-482-0750 and stephanieg@purdue.edu. If you need an interpreter or translator, please contact Stephanie Gay prior to the meeting at 765-482-0750 and stephanieg@purdue.edu.