



BENTON COUNTY

MINI 4-H

HANDBOOK



PURDUE
UNIVERSITY®

Extension - 4-H Youth
Development



Benton County Extension Staff

Jon Charlesworth

Interim County Extension Director
Agriculture Natural Resources Extension Educator

Kelly Wallpe

Office Manager

Amy Wilkinson

Program Assistant

Benton County Extension Office
410 S Adeway Road, Suite A
Fowler, IN 47944
765-884-0140

Office Hours:
Monday - Friday
8:30 a.m. – 4:00 p.m.

Website:

Benton County 4-H

<https://www.extension.purdue.edu/county/benton/benton-county-4-h.html>

Facebook:

Benton County 4-H
Purdue Extension Benton County



Extension - Benton County

Table of Contents

Parent's Page.....	1
Non-Competitive Policy.....	2
Mini 4-Her's Page.....	3
4-H Emblems and Symbols.....	4
Fair Checklist.....	5
Project Guidelines and Poster Requirements.....	7
Animal Science	
Animal Education Poster Project.....	8
Livestock Showmanship Project.....	26
Communication and Expressive Arts	
Arts and Crafts.....	9
Cake and Cupcake Decorating.....	10
Fine Arts.....	12
Model Craft.....	13
Photography.....	14
Construction and Architectural Replica	
Architectural Replica.....	15
Legos.....	15
Engineering and Technologic Science	
Woodworking.....	16
Healthy Living	
Foods.....	17
Plant and Environmental Science	
Bugs (Entomology).....	18
Flowers (Floriculture).....	19
Garden.....	20
Collections.....	21
Do Your Own Thing.....	22
Reading for Fun.....	23
Project Record Sheet.....	24
Food Recipe Card.....	25

Mini 4-H Parent's Page

Welcome to the Mini 4-H Program!

Mini 4-H will introduce you and your child to the 4-H Program. It is an excellent way for children to learn by doing as they can exhibit projects at the fair. Projects are based on information within this manual.

How can families help?

The 4-H program encourages parents, grandparents, guardians and family members to help their 4-Her with his/her projects.

This can be achieved by:

- Helping your child select projects that relate to their interests/hobbies.
- Attending club meetings with your child.
- Giving encouragement and supervision but allowing the 4-Her to do their own work.
- Reading the 4-H newsletter/emails and helping them stay on top of dates, deadlines, etc.
- Being positive. Praising them when they succeed & being there to help them when they are struggling.
- Seeking help from Extension Staff, Club Leaders, fellow 4-Hers, as well as people with specific expertise in project areas.

Mini 4-H Requirements

- Child is in Kindergarten-2nd grade and enrolls in 4-H starting October 1.
- Complete enrollment for 4-H in 4-H Online @ v2.4honline.com
- Pay enrollment fee of \$5.00 to Benton County 4-H Council
- Attend Mini 4-H club meetings and camps
- Complete and submit a project at the fair
- Enter projects to be exhibited at the fair on Fair Entry @ <https://fairentree.com/registrationmax-splash/about>

Mini 4-H Non-Competitive Policy

Mini 4-H is a program designed to encourage positive development of children, Kindergarten through second grade. The goal of Mini 4-H is to help young children explore friendships outside of their family, explore the way in which things work, practice both small and large muscle control and think about the way people work together on projects.

The NON-COMPETITIVE learning environment for Mini 4-H includes:

- Planned learning activities in which children are invited to be active and explore materials and ideas without the pressure of completing a specific product or exhibit.
- Low adult/leader to child ratio that allows time for adults/leaders to provide individual, positive encouragement and assistance.
- Simple, interesting activities that are fun.
- Encouragement of children to participate in a group activity by sharing and or displaying their activity projects.
- Rewards that are identical and/or ribbons of the same color for everyone.

Mini 4-Her's Page



Welcome to Mini 4-H!!!



You are now a member of the 4-H Family.

Mini 4-Hers have lots of fun.

There are so many activities for you to explore and you can try new things.

You can share your activities with your friends and family.

Mom, Dad or another adult can help you with your project. Bring your project to the 4-H Fair and people from our community will be able to see what you have accomplished.

You will also get a ribbon for completing and submitting your project.

What are the 4-H Emblems and Symbols?

4-H Emblem

The National 4-H emblem
is a four-leaf clover
with the letter “H”
on each leaf.

The four H’s

The four H’s stand for
Head, Heart,
Hands and Health.

The 4-H Pledge

4-H members should learn the national 4-H pledge.
It is stated at each 4-H event.

I pledge:

...My Head to clearer thinking
...My Heart to greater loyalty
...My Hands to larger service, and
...My Health to better living,
for my Club, my Community, my country and my World.

4-H Slogan

“Learn by doing”

This slogan represents the 4-H member’s way
of acquiring new skills and learning how to
get along with others.



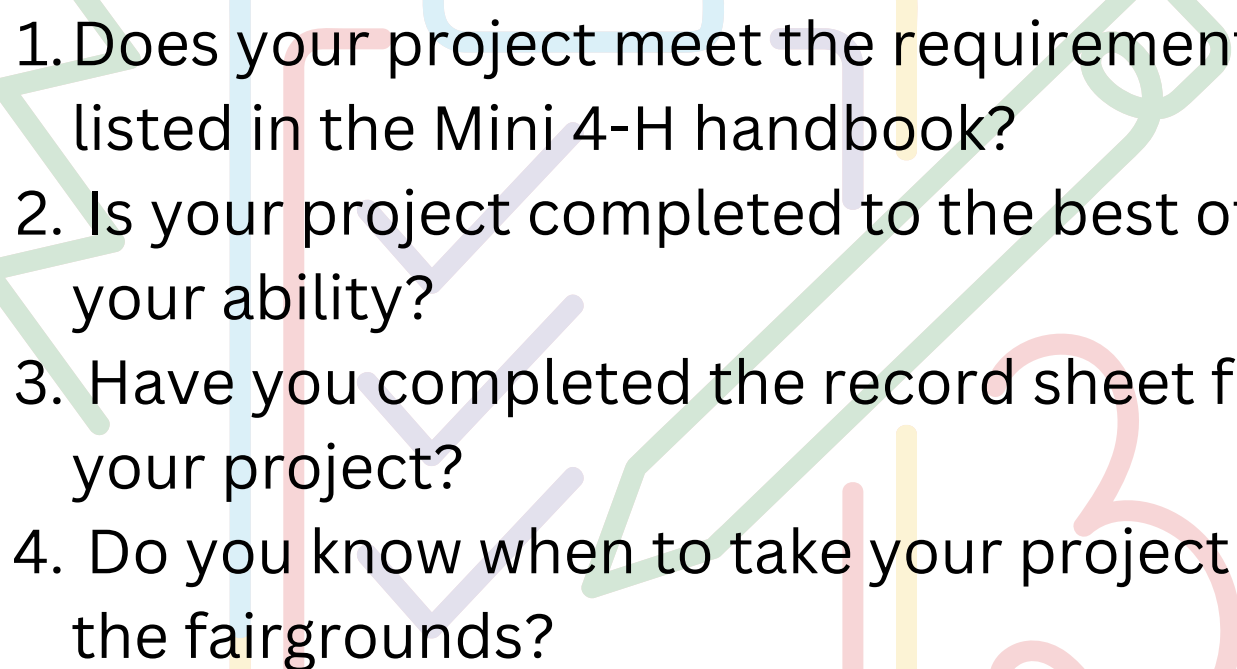
4-H Motto

“To make the best better”



Mini 4-H Fair

Checklist

- 
1. Does your project meet the requirements listed in the Mini 4-H handbook?
 2. Is your project completed to the best of your ability?
 3. Have you completed the record sheet for your project?
 4. Do you know when to take your project to the fairgrounds?

If you have any questions about your project please stop by the office or call @ 765-884-0140.
We're here to help!

Mini 4-H Projects

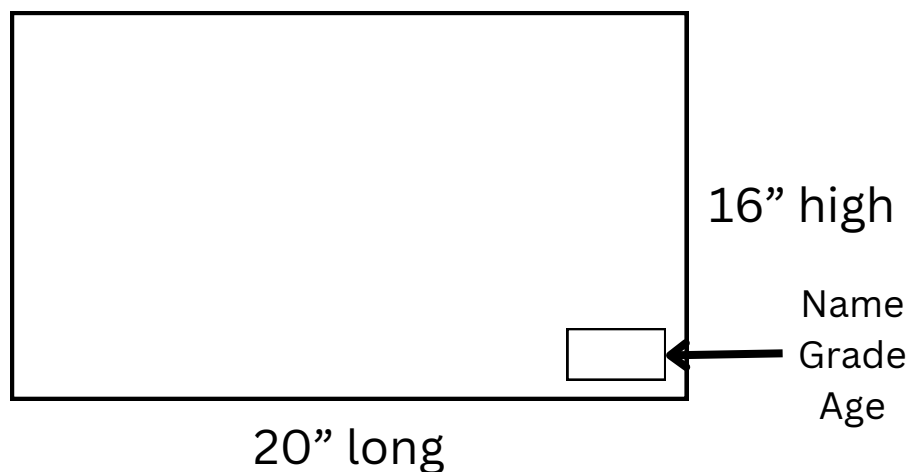
Guidelines:

- Mini 4-H Members may enroll in any number of projects
- Submit a project record sheet with your exhibit when entering your project for the fair
- Mini 4-H projects are exhibited at the county fair only
- Ribbons will be awarded to all Mini projects

Mini Poster Requirements

All poster exhibits must:

1. Have a solid, stiff backing which is 16" high by 20" wide.
2. Be positioned HORIZONTALLY.
3. Include space in the bottom right corner for a card with your name, grade and age.
4. Be covered by a clear plastic material.



****Foam poster boards and clear plastic sleeves may be purchased at the Extension Office.**

Mini 4-H Animal Science

Animal Education Poster Project

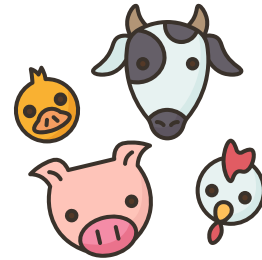
Youth can learn about livestock and companion animals by creating a poster or notebook.

Animal ownership or exhibition is not required.



To begin your project, pick an animal for your project:

- Cat
- Cattle (beef or dairy)
- Dog
- Goats (dairy or meat)
- Horse & Pony
- Poultry (chickens, ducks, turkeys)
- Rabbits
- Sheep
- Swine (pigs)



What to Exhibit:

Kindergarten-2nd Grade

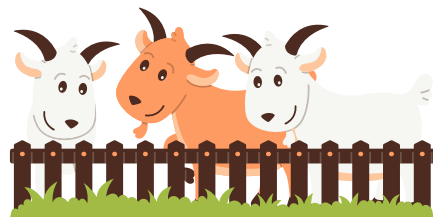


Design a poster or notebook to exhibit:

- Five pictures of your animal. You can use photographs, magazine pictures or drawings.
- Show the different breeds of your animal. Include a picture and a short description of the breeds.
- Products we get from your animal. This can include meat products and by-products.
- Overview of care for you animal. This could include grooming, feeding, housing, etc.



Be sure to follow the Mini Poster Guidelines on page 7 of this handbook.



Mini 4-H

Communication & Expressive Arts

Mini 4-H Arts & Crafts

Show your creative side and use your imagination to create a craft project. Crafts can be used for decorations and they make great gifts too!

What to Exhibit:

Kindergarten:

- Complete an item from a pre-made kit.
Exhibit ideas: sun-catcher, ornament, stepping stone, birdhouse.



1st -2nd Grade

- Complete an original finished product.
- No pre-made craft kit.

Exhibit ideas: splatter painting, crayon rubbing, stamping, sculpting with modeling clay.

Mini 4-H Cake & Cupcake Decorating

Decorating cakes and cupcakes is a fun and creative activity that starts with an idea. To begin, think about something you love or find exciting, like a hobby, a sports team or your favorite color. Use this idea as inspiration to decorate your cake or cupcakes. For example, if you love sports, you could decorate your cake or cupcakes to look like a soccer ball. Or if you like a specific color you could use that color to make the design pop. The fun part is turning your idea in a delicious and eye-catching treat!



What to Exhibit:

Kindergarten:

- 2 cupcakes that are iced and decorated with toppings
- Only one tip should be used to ice cupcakes
- Toppings might include: candies, nuts, raisins, chocolate chips, coconut or any other suitable toppings you find. *You may NOT use pre-made frosting decorations.*
- Place cupcakes in a clear plastic container

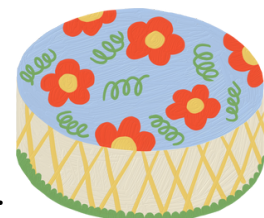


1st Grade:

- 3 iced cupcakes using decorations with your choice of frosting, color and tips. You may only use two different tips.
- Place cupcakes in a clear plastic container

2nd Grade:

- A decorated simple 1 layer, 8" or 9", square or round cake using your choice of frosting, colors, and 3 or more different tips. Cake should be a cake dummy and not a real cake.
- Exhibit cake on a piece of cardboard covered with foil. Do not cover with plastic.



See next page for helpful hints.

Mini 4-H Cake & Cupcake Decorating

Basic supplies you might want to have on hand:

- One or two 12" or 14" decorator bags
- One 2-piece coupler
- #3 writing tip for lettering, outlining, flower stems
- #16 & #22 star tips for stars and borders
- #67 leaf tip for leaves and borders

Where to buy cake decorating supplies:

- WalMart
- Hobby Lobby
- JoAnn Fabrics
- Michael's



Common words used in cake decorating:

Border: goes around the cake on the top, bottom or both

Icing coupler: adding to your icing bag allows you to switch out your piping tips.

Piping: squeezing icing out of a piping bag generally onto a cake. You can pipe words, flowers and other designs.

Piping bag: a bag that hold your icing while you pipe the design onto to the cake.



Mini 4-H Fine Arts

This project will allow you to express your creativity through a drawing or painting using pencils, ink, oils, or watercolor. You choose your favorite medium!

What to Exhibit:

Kindergarten-2nd Grade

- One piece of artwork no larger than 8"x10"
- Artwork can be displayed on canvas, canvas board or paper.
- Frame your artwork so it can be hung to display during fair.
- Canvas art on a wooden frame is considered prepared for hanging as long as it has a hanger attached.



Mini 4-H Model Craft

Do you like to build things? You can build a model with a kit or from items you have at home.

What to Exhibit:

Kindergarten-2nd Grade

- Make one snap-together plastic model
- Make a model using different items of your choice.
Examples: clay, toothpicks, popsicle sticks, etc.



You could also make a background to display your model. For example, paint a shoebox so that your model car looks like it is driving down the road. There are also downloadable backgrounds available online. Use your imagination and have fun!



Mini 4-H Photography

In this project, you will learn the basics on how to take photographs with a camera. If you don't have a camera, you could borrow from someone you know.

Pictures from any camera are acceptable, including pictures taken with a phone!

What to Exhibit:

Kindergarten

- Exhibit 4 color pictures on a poster.
- Number the prints 1-4.
- Label your poster "Mini Photography"

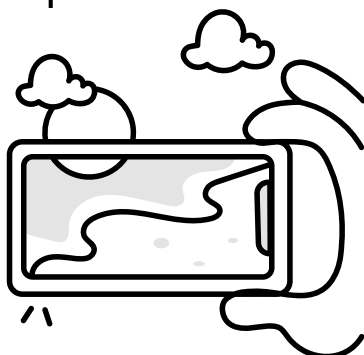


First Grade

- Exhibit 5 color pictures on a poster.
- Number the prints 1-5.
- Label your poster "Mini Photography"

Second Grade

- Exhibit 6 color pictures on a poster.
- Number the prints 1-6.
- Label your poster "Mini Photography"



Mini 4-H

Construction & Architectural Replica

In these projects, use your imagination to create a location to build or use Legos to build anything your imagination dreams up!

Architectural Replica

Exhibits for this project can include farm toy scene, town models, building replicas, or similar items. They can be constructed from any materials.



Kindergarten-2nd Grade

What to Exhibit:

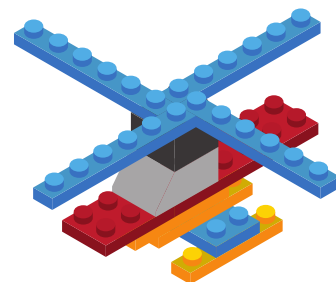
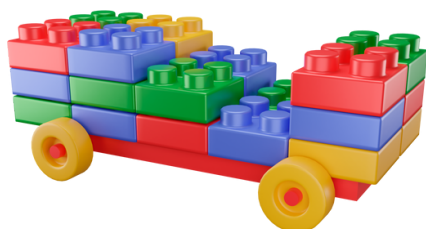
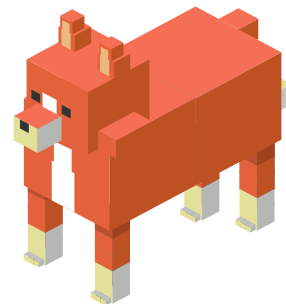
- Exhibit a scene of your choice.
- Be sure to limit the size of your project to 18"x18"

Lego

Kindergarten-2nd Grade

What to Exhibit:

- Lego kits are discouraged-use your creativity to build something original!
- Mount your project to a base no larger than 12"x12"



Mini 4-H Engineering and Technologic Science

Mini 4-H Woodworking

Do you like to build things?
Do you want something useful for your
parents or yourself?
Try your hand at woodworking!

What to Exhibit:

Kindergarten-2nd Grade

- Display a completed woodworking basic kit that you have assembled and finished (stained/painted).



You can complete a Build & Grow Workshop at Lowe's at no cost. Or you can purchase a kit at Lowe's to complete at home to exhibit at the fair.

Follow this link for available kits at Lowe's:

<https://www.lowes.com/pl/outdoor-games-toys/kids-tools-building-kits/kids-project-kits/build-and-grow/4294607589-4294813512>

Kits are also available online or at
Hobby Lobby, Michaels, etc.



Mini 4-H Healthy Living

Mini 4-H Foods

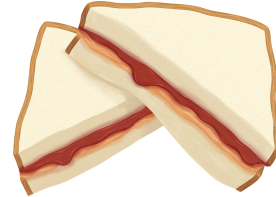
Everyone can have fun in the kitchen.
Learn about measuring, nutrition, making
recipes and kitchen safety.

What to Exhibit:

Kindergarten

Exhibit one of the following:

- display a snack baggie with your favorite trail mix recipe. This can be one you create or a recipe you find.
- display a peanut butter and jelly sandwich on a 6" disposable plate
- a poster showing how to measure ingredients



First Grade

Exhibit one of the following:

- display 2 rice crispy bars on a 6" disposable plate
- display 6 chocolate dipped pretzels on a 6" disposable plate
- a poster that shows at least three kitchen safety rules



Second Grade

Exhibit one of the following:

- display 3 no-bake cookies on a 6" disposable plate
- display 3 brownies on a 6" disposable plate
- a poster that presents MyPlate. Information on MyPlate can be found at: <https://www.myplate.gov/>



**Please be sure to fill out and submit the Mini 4-H Food
Recipe Card with your food project.**

Mini 4-H

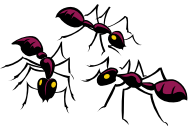
Plant & Environmental Science



Mini 4-H Bugs (Entomology)



Bugs are fascinating creatures that play an important role in our world. While some people find them creepy, many bugs, like butterflies, are beautiful. Some bugs are so tiny that they are hard to see but they all contribute to nature in unique ways. Learning about bugs can be fun and help us appreciate them.



What to Exhibit:

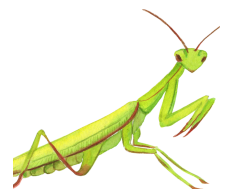


Kindergarten-2nd Grade

- Make a poster of an insect or a spider and label the body parts.
- Draw a picture of a butterfly. Be sure to make the designs on the wings symmetrical.
- Make a poster or a notebook showing some of the way bugs protect themselves.
- Make a scrapbook of different types of insects and spiders and label them.
- Design and make your own bug using materials from around your house.



**Be sure to follow the Mini Poster
Guidelines on page 7 of this handbook.**



Mini 4-H Flowers (Floriculture)

This project is a fun way for you to learn about planting and growing flowers.

What to Exhibit:

Kindergarten-2nd Grade

Three single cut flowers in a bottle or vase

- Flowers can be the same or different kinds.
- Attach a label that tells what kind of flowers you are exhibiting



A flowering plant in a pot

- Attach a label that tells the kind of flowering plant
- Must have a drip tray to place under the pot during fair
- You are responsible for watering your plant at the fair



Make a flower notebook

- Find at least 3 pictures of flowers
- Write the name of the flowers next to their pictures
- Put the pictures in a report cover (any kind of folder with fastener clasps to hold pages in your self-made book)



Mini 4-H Garden

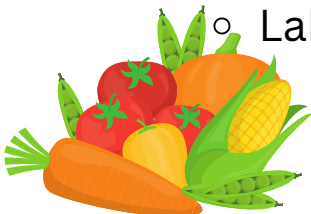
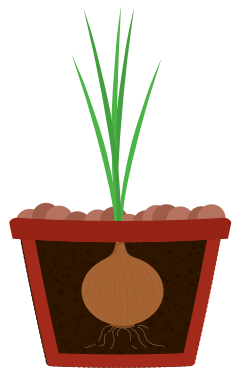
Learn how plants grow. Plant seeds or small plants in a garden or pot and watch them grow to produce vegetables.

What to Exhibit:

Kindergarten-2nd Grade

Exhibit one of the following:

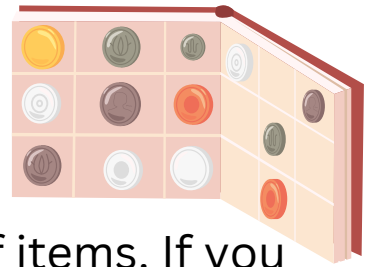
- A paper plate with a maximum of three vegetables you have grown.
 - Attach a small label with the types of vegetable you are exhibiting. Include your name and grade level.
- One vegetable plant in a pot no larger than 10 inches in diameter. Please have a drip tray under your pot.
 - You must have taken care of your plant for at least two months before exhibiting it at the fair.
- Create a poster displaying 7 different types of vegetables and label them.
 - Label your poster 'Mini Garden'
- A notebook with pictures of different types of vegetables.
 - Label each vegetable with its name
 - Label your notebook 'Mini Garden'



Mini 4-H Collections

Collections can be a fun and exciting hobby. Did you know that museums are actually large collections of interesting items?

In this project, you will learn different ways to collect and display things that interest you. Whether you're collecting rocks, coins, insects, figurines, trading cards or anything else, organizing and showing off your collections can be just as fun as collecting the items.



What to Exhibit:

Kindergarten-2nd Grade

- Collect and exhibit 5 items or 5 pairs of items. If you take a collection to the fair more than one year, add 5 more articles to your collection each year.
 - You may display them in a box or take pictures of them and put them in a scrapbook or on a poster board.
 - Attach a card that tells what you are collecting and why you collected the items.
- Create a poster about a famous collection
 - Visit a museum in person or online and create a poster about some of the items at the museum. Be sure to use captions on your pictures. Use at least 5 images.
- Create a poster of your dream collection (5 images minimum)
 - What is your dream collectable? Why? Where would you look for these items?



Mini 4-H

Do Your Own Thing

This project is for creations that don't fit in any other project category. Explore your own interests and use your creative abilities to exhibit a project.

Kindergarten-2nd Grade

- Exhibit should be no larger than 18"x18"
- Submit a project record sheet with your exhibit

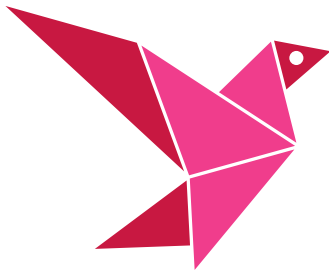
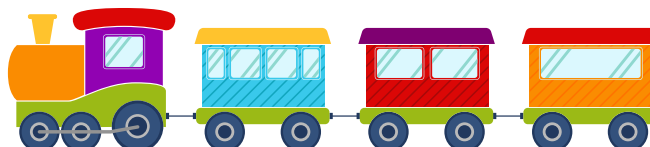
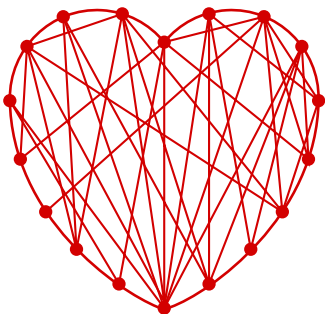
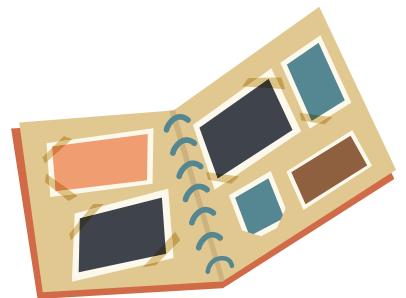


Exhibit ideas:

- Photo album
- Paper craft
- String art
- Train set



Mini 4-H Reading for Fun

Share your love of reading by exhibiting a project about your favorite book!



What to Exhibit:

Kindergarten-2nd Grade

Exhibit **one** of the following each year:

- Draw a picture of your favorite book character.
- Design a new book cover for your favorite book.
- Make a poster about your book.
- Create a model or diorama of a scene from your favorite book.
- Write a short book report about your favorite book. Be sure to list the title of the book and the author.
- Create a paper bag book report. Decorate a paper bag to show your favorite book, then fill it with 5 items to represent characters or what happens in the book.



Be sure to follow the Mini Poster Guidelines on page 7 of this handbook.



Benton County Mini 4-H Record Sheet



Name: _____

Parent/Guardian

Name: _____

Grade just completed: ☐ Kindergarten ☐ 1st Grade ☐ 2nd Grade

4-H Club _____ Years in Mini 4-H _____

Project completed:

(Please fill out a record sheet for each project completed)

- | | |
|--|---|
| <input type="checkbox"/> Animal Education Poster | <input type="checkbox"/> Flowers (Floriculture) |
| <input type="checkbox"/> Architectural Replica | <input type="checkbox"/> Foods |
| <input type="checkbox"/> Arts and Crafts | <input type="checkbox"/> Garden |
| <input type="checkbox"/> Bugs (Entomology) | <input type="checkbox"/> Legos (Construction Replica) |
| <input type="checkbox"/> Cake and Cupcake Decorating | <input type="checkbox"/> Model Craft |
| <input type="checkbox"/> Collections | <input type="checkbox"/> Photography |
| <input type="checkbox"/> Do Your Own Thing | <input type="checkbox"/> Reading for Fun |
| <input type="checkbox"/> Fine Arts | <input type="checkbox"/> Woodworking |

When did you start your project? _____

Total hours spent on your project: _____

What did you learn from this project?

How will you use your project?



Benton County Mini 4-H

Food Recipe Card



Name

Name of Recipe

Date made

Ingredients and Amounts



Directions



Mini 4-H Livestock Showmanship Project

The Mini 4-H Livestock Showmanship Project is a special opportunity for Mini 4-Hers to learn about animal husbandry in preparation for traditional 4-H.

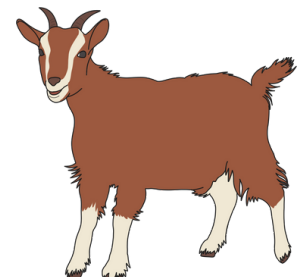
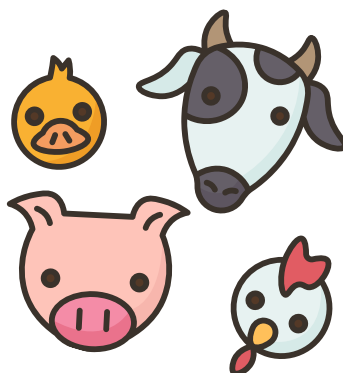


Members will shadow an experienced 4-H mentor to learn about what project participation requires, including animal care. Throughout the summer the member needs to work with the animal to become confident in their ability to handle and show the animal during the Mini 4-H class at the Benton County 4-H Fair.



Mini 4-Hers may show the following species of animals offered in the Benton County projects which include Beef, Sheep, Goats, Swine, Horse and Pony, Poultry and Rabbits.

The following pages contain project guidelines and forms required for the Mini 4-H Livestock Showmanship Project.





Benton County Mini 4-H Livestock Showmanship



The goal of this project is to allow Mini 4-H members a chance to practice their skills in the show arena, as well as learn what goes into taking care of and exhibiting an animal at the Benton County 4-H Fair. Our hope is that this project will encourage Mini 4-H members to try something new, learn life-long skills, make new friends and gain an excitement for 4-H that they will carry with them throughout a 10 year 4-H career.

Guidelines for Exhibition

1. A Mini 4-H Member may sign up for the 'Mini Livestock Showmanship' project and exhibit any of the livestock species that are exhibited at the Benton County 4-H Fair.
2. A Mini 4-H member must have a 4-H mentor.
 - a. The mentor must be a current Benton County 4-H member who is in grade 7- 12 and will be approved by the educator.
3. We encourage the Mini 4-H member to locate a mentor that they would like to work with. However, if a Mini 4-H member does not know of someone that can serve as their mentor, the Extension Office will assist the Mini 4-H member in finding one. The goal of this project is to allow any Mini 4-H member to participate.
4. The Mini 4-H member and their parents must complete the Liability Release Form and the Mini 4-H Livestock Project Exhibitor Enrollment Form by May 15th and submit both to the Benton County Extension Office.
5. The Mini 4-H member will need to complete the Livestock Record Sheet and Work/Mentor Verification Form and submit them the first day of fair.
6. The Mini 4-H member will be required to work with the animal in three, one hour sessions before exhibiting at the fair. Arrangements for these sessions will be left to the Mini 4-H's family and mentor.
7. The Mini 4-H member cannot exhibit his/her own animal, but will show his/her mentor's animal being exhibited at the Benton County 4-H Fair.
8. The Mini 4-H Showmanship class will be held during the 4-H Livestock show at the superintendents discretion. The mentor must be in the ring to assist the Mini 4-H member.
9. The Mini 4-H members will not be placed, but the judge will be encouraged to give helpful hints for future exhibition.
10. The safety policies, as stated in the Liability Release Form must be followed. If the safety policies are not followed, the Mini 4-H member will not be allowed to exhibit the animal.

Mini 4-H Liability Release Form

The safety and well being of our 4-H youth is of the utmost importance. Although kindergarten is specified as the time when a child may begin participation in some 4-H events and activities, parents are encouraged to take into consideration their child's physical and mental development before agreeing to let the child begin to show, work with, or care for animals. Each child matures at a different rate, and children in grades K-2 may still be too young to begin showing, working with, or caring for animals.

The Indiana 4-H Youth Development Program at Purdue University has agreed to allow Mini 4-H members in grades K-2, to participate in NON-COMPETITIVE animal projects subject to certain conditions. These conditions are specified below.

"Mini 4-H members, in grades K through 2, will be allowed to show, work with, or care for animal projects after their parent or legal guardian has signed a liability release. Mini 4-H members may independently show, work with, or care for animals that weigh 300 pounds or less. Mini 4-H members may only show, work with, or care for animals over 300 pounds when they are assisted by a parent, legal guardian, or another adult designated in writing by parent or legal guardian." (The word assisted means that the adult has control of the animal at all times.) Mini 4-H members are not required to own the animals they participate with in Mini 4-H. All animals on exhibit should meet the regulations of the Indiana Board of Animal Health Requirements for Exhibition of Domestic Animals in Indiana and meet the vaccination requirements set by Indiana 4-H.

Mini 4-H members exhibiting horses must wear ASTM or SEI standard F1163 (or above) certified helmets whenever mounted. The parent/guardian is responsible to see that this specified headgear is properly fitted with the approved harness in place and fastened whenever a rider is mounted.

I understand that participating in 4-H activities can involve certain risks to my child. Those risks may include injury or harm, including, but not limited to, bodily injury, disability, exposure to COVID-19 and other viruses and or illnesses, and death. During virtual 4-H activities, I understand that program staff are not providing supervision for my child during the online program, and the Released Parties do not have control over the information available through the internet or other electronic data sources beyond that which is a part of the 4-H activity. On behalf of my child, I fully assume the inherent risks associated with my child participating in 4-H activities and assert that my child has chosen to participate in this program with my express approval. I hereby release and discharge Purdue University, The Trustees of Purdue University, the Benton County Commissioners, the Benton County Cooperative Extension Service, and each of their trustees, officers, appointees, agents, employees, and volunteers ("Released Parties") from all claims which my child or I might have for any injury or harm to my child, arising out of my child's participation in any activity related to the 4-H program, even if such injury or harm is caused by the negligence or fault of any of the Released Parties. I do not, however, release these individuals and entities from liability for intentional, willful or wanton acts and this release shall not be construed to include such acts.

Mini 4-H member's name

Other Adult Designee - Print Name

Signature of Parent/Legal Guardian

Date

Signature of Parent/Legal Guardian

Date



Benton County Mini 4-H Livestock Record Sheet



Name: _____

Parent/Guardian

Name: _____

Grade just completed: ☐ Kindergarten ☐ 1st Grade ☐ 2nd Grade

4-H Club _____ Years in Mini 4-H _____

4-H Mentor Name: _____

Select project specie:

(Please fill out a record sheet for each specie)

☐ Beef

☐ Rabbit

☐ Goat

☐ Sheep

☐ Horse and Pony

☐ Swine

☐ Poultry

What did you learn from this project and your mentor?

What did you enjoy most about this project?



Mini 4-H Livestock Showmanship Project Exhibitor Enrollment Form



****Due May 15 to the Benton County Extension Office****

Please print all information.

Mini 4-H Member Name: _____

Parent Name: _____

Address: _____

Phone: _____ Email: _____

Emergency Contact Name: _____

Emergency Contact Name: _____

Choose one specie that the Mini 4-H member would like to exhibit at the Benton County 4-H Fair.

- ☐ Beef ☐ Goat ☐ Horse and Pony ☐ Poultry ☐ Rabbit
☐ Sheep ☐ Swine

I, the Mini 4-H member and my family, understand that I must have a mentor to help me when exhibiting. I understand that my mentor must be a current Benton County 4-H member who is in grade 7-12 and approved by the educator. I also understand that I, the Mini 4-H member, am required to complete three, one hour sessions with my mentor for the specie I have chosen to exhibit.

I understand it is the responsibility of myself and my family to contact a mentor or contact the Benton County Extension Office for assistance in finding a mentor before signing this form.

Mentor Name: _____

Mentor Parent Name: _____

Mentor telephone: _____ Email: _____

I agree to allow my child to exhibit at the Benton County 4-H Fair in the non-competitive Mini 4-H Livestock Showmanship Project.

Signature of Parent/Legal Guardian

Date



Mini 4-H Work/Mentor Verification Form



As a 4-H Program we appreciate that we have amazing volunteers and mentors who provide the opportunity for our Mini 4-Hers to gain experience with specific livestock species. The key for youth success is the time and work they put into their projects.

All Mini 4-Her's that show an approved livestock animal must submit this form to the Extension Office or the Mini 4-H Leaders prior to the first day of the 4-H Fair to be eligible to participate in the Mini 4-H Livestock Showmanship Show for the species they chose.

Please complete the chart below for to verify that you completed the requirements of working with you livestock animal a minimum of three times, for an hour each time to prepare for the 4-H Fair.

Once this chart is completed and signed by your Mini 4-H Leader you will be allowed to enter the show ring for your species show.

Mini 4-H Member Name: _____

Mini 4-H			
Date	Work Done	Mentor Signature	Parent/Adult Signature

Date Form Received: _____

Member Eligible to Show: YES NO

Mini 4-H Leader