

HORSE & PONY

Activity Sheet - 2025

Level 3 - Grades 9-12



**Allen County 4-H Skills
for Life**

What you will do in this project:

- Enroll in the 4-H program by January 15.
- Complete this project by answering 2 complete activities in this activity sheet and turning it in to the Extension Office or Horse and Pony Office **by June 15** or earlier.
- You do not have to have a horse to participate in a 4-H Horse and Pony Club.
- By May 15 complete and submit the 4Honline Horse ID with color pictures of the animals you intend to show. A maximum of 2 pictures per animal may be uploaded. The pictures must contain the face and all four(4) feet of the animal in the picture. Files must be a jpg, jpeg or png file.
- To enter into the Indiana State Fair, please go to www.indianastatefair.com and enter online. Each exhibitor is required to pay an entry fee at the time of entry. June 1, 2025 is the entry deadline. Late fees apply for entries made after June 1, 2025.
- Attend County 4-H workshops, meetings, and clean up days when offered—at least 2 horse club meetings and 2 riding (outdoor) meetings.
- To exhibit an educational poster, you must bring your completed poster for judging to the 4-H Exhibit Building on the designated day prior to the start of the County Fair.
- Refer to the Allen County 4-H Rules Book for a complete listing of all regulations concerning this project.
- Complete the attached Declaration Form.
- Complete Fairenty online by published deadline - June 4.

Management Tips:

- Provide clean, fresh water to horses and ponies at all times. Horses will drink anywhere from 10-12 gallons of water per day. Ponies will drink a little less.
- Feed horses and ponies at least two times a day and at the same time every day.
- Make sure your horse/pony finishes their feed. Watch to see that animals on turnout are not being chased away from their food by other bossy horses or ponies.
- Check daily for injuries, sickness, unusual things or changes in behavior. You should spend enough time with them that you know when they are a little "off".
- Provide shade from the sun and protection from wind, snow and rain.
- De-worm and remove bots as needed. Treating horses and ponies for external parasites is important for their health and appearance.
- Clean and replace bedding often if horses or ponies are stalled.
- Rinse horses and ponies after you get them sweaty or when they get really dirty. Clean and conditioned hair and skin makes them feel and look better.
- Brush your horses and ponies to calm them and clean and train their hair. This is also a good time to bond with your equine friend.
- Exercise stalled horses or ponies daily; or make sure they have turnout time.
- To finalize preparation for showing, train your horse or pony at least three times a week. Remember, every time you are with them you are training.

4-H Member: _____ 4-H Club: _____

Grade in School (January 1, 2025) _____ Years in this project _____

Signature of 4-H Member verifying that you have completed these activities: _____

Signature of Parent that you have reviewed this information: _____

· 4001 Crescent Avenue · Fort Wayne, IN 46815-4590 ·
(260) 481-6826 · FAX: (260) 481-6439

Purdue University, Indiana Counties and U.S Department of Agriculture Cooperating
An Affirmative Action/Equal Opportunity Institution

4-H Animal Care:

The Indiana 4-H program strongly supports positive animal care and strongly opposes animal abuse. 4-H is also dedicated to the mission of developing youth and volunteers through "Learning by Doing" programs.

4-H livestock projects teach life skills such as acquiring knowledge, making decisions, and applying leadership skills.

When working and caring for animals, it is important to insure that appropriate safety measures are in place for both the animals and the persons who care for them. Therefore, there is no substitute for knowledge, common sense, and experience.

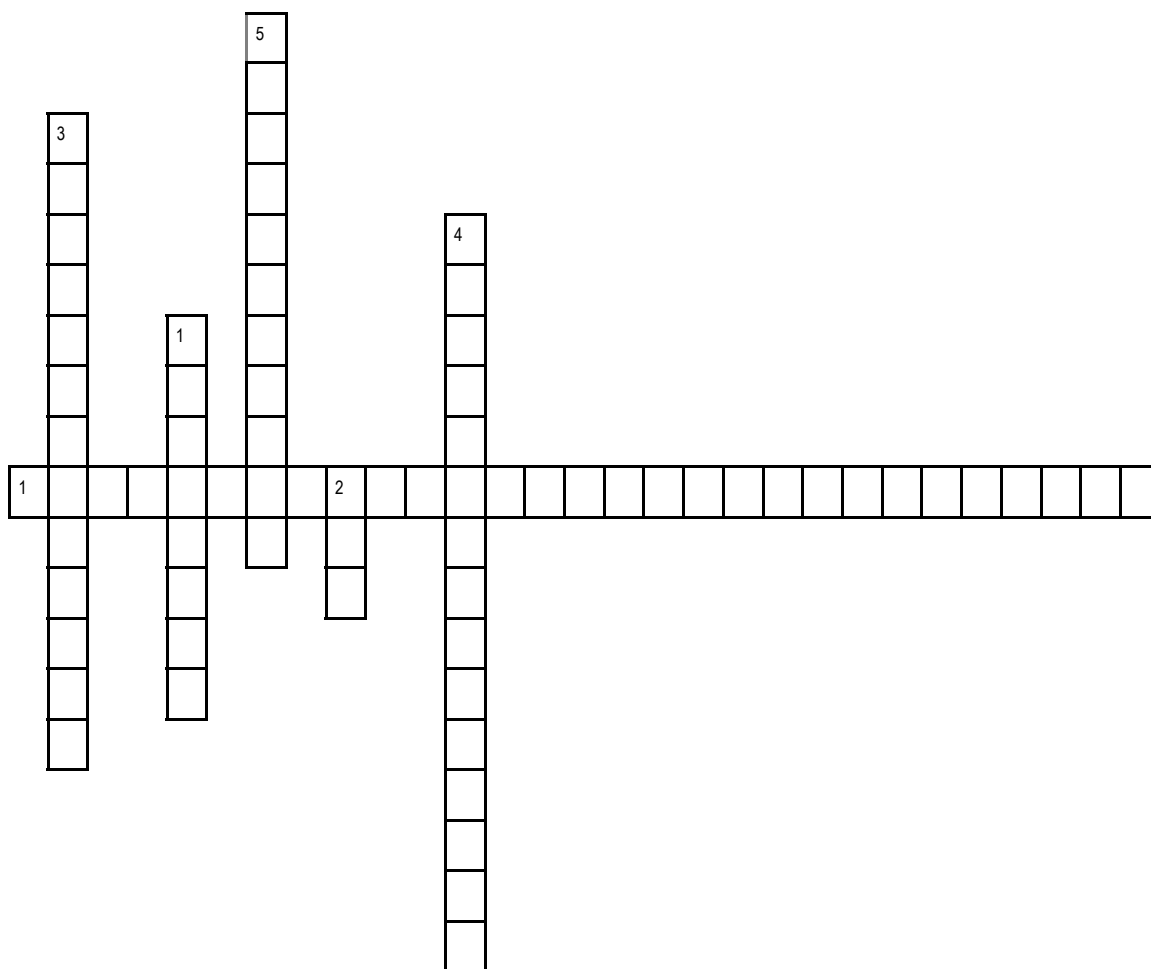
Animal handlers should study and learn to anticipate an animal's reaction and try and avoid problem situations. It is most important that 4-H members understand an animal's behavior so one can "outsmart" not "out-muscle" an animal. Foremost in the 4-H'er mind should always be safety of the handler and the animal

An animal's good health is often directly related to the environmental factors associated with its living space. The presence of predators, dust, odors, pests, temperature, and humidity has a direct effect on an animal's well-being.

Animals react favorably to daily care and comfortable housing. Consideration should also be given to specific animal needs such as size of their housing space, lighting, and ventilation. The best facilities and equipment cannot and should not be a substitute for daily observation and careful attention to signs of illness, injury, and/or unusual behavior.

Level 3 Activity 1 - Genetic Disorders

Use the clues to complete the crossword puzzle



Down

1. Absence of the iris of the eye, plus cataracts of the eye; the condition was traced back to one Belgian stallion in Sweden.
2. A degenerative condition that affects the brain and spinal cord; causes ataxic gait in the front legs, hind legs or both
3. Destruction of muscle tissue, causing muscle cell necrosis; horses develop a stiff gait.
4. Abnormal bone growth that affects horses' joints; may cause cyst like lesions in the bone or flattened or depressed areas in joint surfaces.
5. Seen in colts only; causes inability of the blood to clot, resulting in hematoma, internal bleeding, anemia, or death

Across

1. Episodes of muscle tremors, weakness, stiffness, and paralysis (HYPP)

Level 3 Activity 2 - Deworming Agents

Below are Deworming Agents, unscramble the letters to reveal the term.

Z I R A A L T Q N P U E

D X I O T C N I M

V M E T N I I E C R

E D E A C M Z B O A

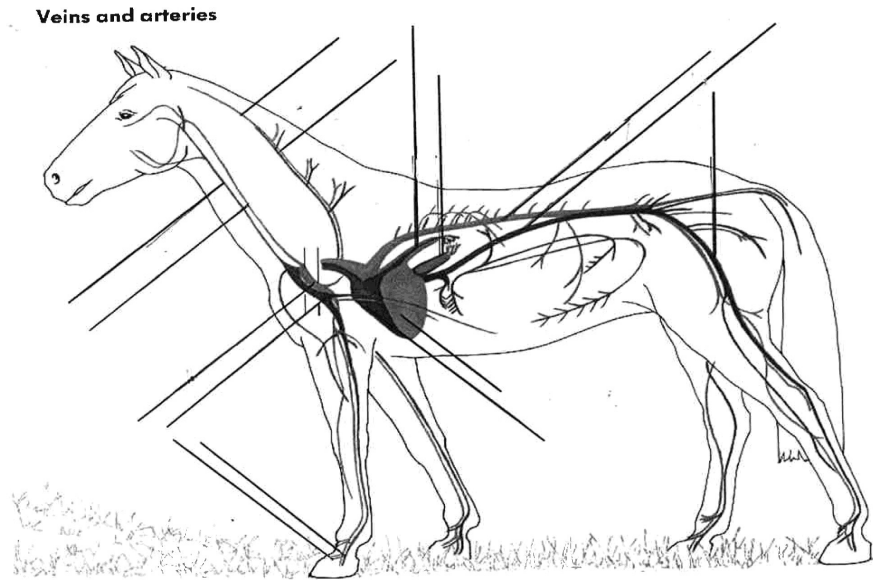
Z F E L B E E N D O A

B T N F L E E A

Y N L T E P A R E P M A A T O

What is a good deworming rotation and frequency?

Level 3 Activity 3 - Veins and Arteries



Word Bank

Pulmonary vein
Right Ventricle
Femoral vein
Neck artery
Pulmonary artery
Neck vein

Left Ventricle
Aorta
Subclavian Artery
Pedis artery
Pedis vein
Subclavian vein

Jugular vein
Neck artery
Posterior vena cava
Subclavian vein
Carotid artery

Level 3 Activity 4 - Saddles & Show Attire

These questions came from 4-H Skills for Life Level 5—Jumping to New Heights

1. Research saddle types, their uses and prices. Find pictures and detailed descriptions of three to five saddles. Write down what factors you should consider when purchasing a saddle and which saddle meets your needs for the best price. Attach your research to this activity sheet.
2. From magazines, the Internet and other sources design 2-3 riding and in-hand show outfits you might use in the show ring. Cut and paste your favorites and any other attire/accessory you would like, assemble these outfits on a separate page and attach to this activity sheet.

Level 3 Activity 5 - Show Patterns

In this activity, create three patterns for each class listed. Along with a diagram please write detailed instruction for each. Attach additional sheets.

Showmanship

English Equitation

Western Horsemanship

Level 3 Activity 6 - Famous Horses

Conduct research and compile a list of famous/accomplished horses, and their riders. After the list is made, pick four horses as well as two riders and write a short biography for each. Attach sheets if needed.

_____ Completed On Line 4-H Enrollment by January 15, 2025

_____ Completed Animal ID on Line by May 15, 2025

_____ Completed Fair Entry on line by May 15, 2025