

Rabbit Activity Sheet -2022

Level 2 - Grades 6-7-8

Complete Packet due to the Extension Office June 30, 2022

\$1.00



Allen County 4-H
Skills for Life

What you will do in this project:

- Enroll in the 4-H program by **January 15 in v2.4HOnline**.
- Enter rabbits to be shown at the County Fair online by June 20 on the Fair Entry website at <https://allencountyindiana.fairentry.com>. You will need to use Firefox or Google Chrome to make the entries. It is helpful to fill out the Rabbit Identification Guide first.
- Complete the 2 activities in the Rabbit Activity Worksheet and turn it into the Extension Office on or before **JUNE 30**. The form is at <https://extension.purdue.edu/county/allen/allen-4h.html>
- The Rabbit ID Guide must be turned into the Extension Office on or before June 30. It is to be attached to the Rabbit Activity Worksheets.
- Members showing meat pens and single fryers must contact person on Rabbit ID Guide to get an assigned tattoo letter. The assigned letter must be on the ID Guide when it is turned in. Check the rule book for age and weight requirements of rabbits.
- It is recommended that exhibitor attends two County 4-H Rabbit workshops when offered.
- It is recommended that each family purchase a Rabbit Resource Handbook. The handbook is a good source of information and can be used as a reference when answering questions in the activity sheet.
- All new rabbits in your rabbitry need to be purchased before April 15. This includes the does that are bred for your meat pens and single fryers.
- Refer to the Allen County 4-H Rules Book for a complete listing of all regulations concerning this rabbit project. The rule book can be viewed online at website https://extension.purdue.edu/county/allen/_docs/4h/projects/2022-rules-book1.pdf
- To exhibit beef cattle, dairy cattle, swine, sheep, meat goats, dairy goats, poultry and rabbits, 4-H members must be certified through the Youth for the Quality Care of Animals program. This is an annual program that can be completed via online modules or in-person trainings. For more information

about in-person

trainings in your county, please contact your County Extension Office. More information about YQCA is available at <https://yqcaprogram.org/>. **Attach a copy of YQCA card.**

Management Tips:

- Rabbits should be provided with plenty of fresh water daily. It is best to change their water twice a day, especially on hot days or in the winter when the water dishes freeze.
- Use a good quality commercial food pellet. Ask other rabbit breeders what feed they give their rabbits and find one that works for your rabbits. The package should give a suggested amount of feed to give daily and then adjust to each rabbit's needs.
- Get in the habit of watching your rabbit's behavior. Make sure they are acting, eating and drinking normally.
- Purchase rabbits from a reputable breeder. The breeder that you purchase your rabbits from will be able to answer questions on feeding, health, housing, and breeding.
- Provide rabbits with an appropriate size cage for their size and weight. The cage should also protect them from predators as well as shelter them from cold drafts, rain, sun and heat.
- Regularly handle your rabbits. A rabbit that is handled often is easier to work with. Practice poising them for show, groom and trim nails if needed, check their teeth and overall condition.
- Be responsible. Your rabbits depend on you to feed, water and care for them.
- A good source of information is The American Rabbit Breeders Association. Their web page is: <http://arba.net>.

4-H Member: _____ 4-H Club: _____

Grade in School (January 1, 2022) _____ Years in this project _____

Signature of 4-H Member verifying that you have completed these activities:

Signature of Parent that you have reviewed this information:

- presence of predators, dust, odors, pests, temperature, and humidity has a direct effect on an animal's well-being.
- Animals react favorably to daily care and comfortable housing. Consideration should also be given to specific animal needs such as size of their housing space, lighting, and ventilation. The best facilities and equipment cannot and should not be a substitute for daily observation and careful attention to signs of illness, injury, and/or unusual behavior.
- Frequent consultation with your veterinarian is a must. Reasonable attention must always be given to the use of drugs and their approved withdrawal times.

A Unique Digestive System

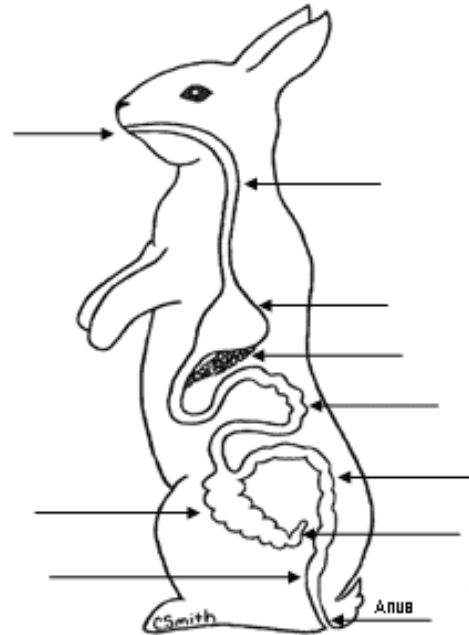
Rabbits are called hindgut fermenters which mean that a rabbit's digestive system depends on bacteria in the unusually large cecum to breakdown digestible fiber and food to provide the nutrients a rabbit needs to stay healthy. Bacterial fermentation is similar to what takes place in ruminants like sheep and in the four compartment stomachs of cattle.

There are two types of fiber indigestible and digestible. The indigestible fibers are large particles that cannot be digested and are passed through the digestive tract and expelled as hard round feces. This ability to extract the indigestible fiber from the small digestible fiber particles eliminates the need for the rabbit to store large volumes of food in the digestive tract. The digestible fiber and nutrients are picked up in the cecum and are broken down by bacteria. The contents in the cecum form clusters of soft small pellets called cecotropes which are rich in essential amino acids, volatile fatty acids, and B vitamins. The cecotropes will be covered with mucous while traveling through the large intestine. This cycle happens about 4 hours after feeding. A rabbit will ingest the cecotropes as

Activity 1

soon as they are expelled from the body. This vital process is called cecotrophy. Re-digestion of cecotropes provides a rabbit with additional nutrients that were broken down by the bacteria in the cecum and were not absorbed the first time by the stomach, pancreas, small intestines, and cecum. Cecotrophy allows a wild rabbit to graze for a short time and return to the safety of their den where digestion can continue.

1. First label the parts below of the rabbit's digestive system and then find all of the words in the word search on the next page. The *Rabbit Resource Handbook* Chapter 6 Nutrition will be very helpful in completing this activity. Rabbits have six incisor teeth instead of four like rodents. Behind the two top front incisor teeth are two more incisors called peg teeth. Rabbit's teeth are open rooted which means that all of their teeth continually grow throughout their entire life. The teeth are worn away by eating hard pellets and hay, and by attrition. Attrition occurs when a rabbit grinds their teeth while resting.



2. Digestible fiber is important in keeping a rabbit's digestive tract healthy and it also helps the intestinal tract absorb six important nutrients. Write in the nutrients below and then find all seven in the word search below. The nutrients can be found in Chapter 6 Nutrition in the *Rabbit Resource Handbook*.

1. Digestible Fiber	5.
2.	6.
3.	7.
4.	

3. Complete each sentence and find these words in the word search below. The answers to the first two questions can be found in the paragraphs above titled *Unique Digestive System*.

A. _____ is the process of eating cecotropes.

B. _____ helps the cecum to break down digestible fiber and food into needed _____.

C. An animal that eats a diet of only plants is called a _____.

D. Feeding a quality name brand pellet is important because it will provide a rabbit with a well balanced _____.

Rabbit Digestion

Find the 22 words from the 3 questions above in this word search.

H L X J A W J U Y S U N A P W S W E
 E O E C F P I V H T X E K F K L C N
 R S U N C Y P C H A H A J A M A W I
 B S T S I P D E E M U C E C M R I T
 I B J N V T K H N C M I S O U E T S
 V A R O E E S W U D O N U W W N F E
 O C R E B I F E L B I T S E G I D T
 R T W K C D R S T M H X R S U M J N
 E E A S J T T T A N I E T O R P P I
 S R T X U A U T U Y I B K D P L B E
 B I E H F N I M L N I L Q R X H U G
 Y A R V M V A E R H I V L J S W Y R
 C A R B O H Y D R A T E S A K M B A
 P A N C R E A S T O M A C H M Y A L
 F B O S U G A H P O S E N U K S R W

Activity 2

Feeding Your Rabbits

Wild rabbits are crepuscular which means they are active in the evening when the sun starts to set and then again in the morning when the sun comes up. These times are known as dusk and dawn. Most of their feeding is done between sunset and midnight. This is different from nocturnal animals that are active all night in the dark. Domestic rabbits are more likely to eat in the evening and into the night. It is recommended that a rabbit be fed pellets in the evening and a conditioner, a little hay, or a treat in the morning. Whether you feed your rabbits in the morning or at night does not really matter. It is important that you have a schedule and stick to it. Your rabbits will get used to your schedule and will count on you to feed them at the same time every day.

It is hard to decide how much to feed your rabbits when you first get them. Ask the breeder that you bought the rabbits from what brand they feed their rabbits, what is the protein, how much do they feed everyday, and if they add supplements like whole grain conditioners or hay. Some rabbits even though they are the same size will eat more or less than another. Adjust the feed according to each rabbit. If there is left over food in the feeder twenty four hours after they were fed last, then do not feed that rabbit quite as much. If another rabbit's feeder is empty, then that rabbit may need a little more. A rabbit's diet is not complete without plenty of fresh water daily. It is best to check the water at least twice a day. Water keeps a rabbit's body functioning normally, so that the nutrients from the feed are properly utilized to keep your rabbit healthy and in good show condition.

To answer the questions below you will need a label from a rabbit pellet feed sack. If you do not have rabbits yet, a feed label from a cat or dog feed sack will work too. You can also find a feed label online.

To answer the questions below you will need a label from a rabbit pellet feed sack.

1. When do you feed your rabbits? _____
2. What feeding method do you use? _____
3. What is the brand name of the feed?

4. Under the brand name is usually a purpose for the feed. An example would be for growing and breeding rabbits. What is the purpose of your feed? _____
5. Look under the guaranteed analysis. This is a guarantee that the ingredients listed are present in the amount stated as a percentage by weight. What is the percentage of protein? _____
What is the percentage of fat? _____ What is the percentage of fiber? _____
6. Look at the ingredient statement. The ingredients are usually listed in the order of amount with the first ingredient having the greatest weight compared to the other ingredients in the bag. What are the first two ingredients listed? _____
7. Name a vitamin and a mineral from the list. _____
8. Somewhere on the feed sack should be a date that the feed was made or a "best when used by" date. Sometimes the sack just has a code or lot number stamped on it. Find a date or code on the sack and write it down. _____
9. Why is it important to know when the feed was manufactured? _____
10. What is the most important nutrient that you can provide your rabbit? _____

ALLEN COUNTY 4-H PRODUCTION RABBIT RECORD



Records serve as a way to measure your own success with a project. When answering these questions, you should be able to see where improvements can be made for next year and if you wish to continue with this project for another year.

1. List types of feeds, hay, and conditioners that you feed to your rabbits.

Breed of Rabbit	Brand name of Feed	% of protein	Amount fed & frequency	Weight & cost of bag

Breed of Rabbit	Supplement	Amount fed & frequency	Cost

2. How many rabbits do you take care of in a year? _____

3. How many breeding animals do you have? _____

4. Do you sell your rabbits? _____

5. Who buys your rabbits and for what purpose? _____

6. How do you care for your animals in both hot and cold weather? Tell about housing, feeding and watering.

7. How often do you clean your cage trays? How often do you sanitize cages, feed and water dishes, and equipment?

8. List any tours, workshops, clinics, shows or contests that you may have participated in during the last year that pertained to rabbits.

9. What resources do you use to help you have a successful rabbitry? (List people, magazines, websites, etc.

10. List two new things that you have learned about rabbits this year?

11. Did you get a new breed of rabbit this year? If so, what breed and what have you learned about them?

_____ Complete v2.4honline enrollment by January 15, 2022

_____ Completed Fair Entry on line by June 20, 2022

_____ Attach Copy of YQCA card

_____ Turn in Completed Activity Sheets & 2022 Allen County 4-H Rabbit ID Guide by June 30, 2022 to the Extension Office

4-H Production Rabbit Inventory

Do an inventory of all the breeds you raise. Make more charts on the back of this worksheet, if you have more than 4 breeds or more than one variety of a breed. Keeping records of your rabbitry over the years will help you see how far you have come. Knowing this information will help you make decisions on what to sell, breed, show or cull.

Name of 1st breed	Variety or (Color)	4 or 6 class	Total number
Senior Bucks			
Senior Does			
6/8 Bucks			
6/8 Does			
Junior Bucks			
Junior Does			
Kits (pre juniors)			Grand Total of this breed

Name of 2 nd breed	Variety or (Color)	4 or 6 class	Total number
Senior Bucks			
Senior Does			
6/8 Bucks			
6/8 Does			
Junior Bucks			
Junior Does			
Kits (pre juniors)			Grand Total of this breed

Name of 3rd breed	Variety or (Color)	4 or 6 class	Total number	
Senior Bucks				
Senior Does				
6/8 Bucks				
6/8 Does				
Junior Bucks				
Junior Does				
Kits (pre juniors)				Grand Total of this breed

Name of 4th breed	Variety or (Color)	4 or 6 class	Total number	
Senior Bucks				
Senior Does				
6/8 Bucks				
6/8 Does				
Junior Bucks				
Junior Does				
Kits (pre juniors)				Grand Total of this breed

This Form DUE JUNE 30, 2022--To the Allen County Extension Office

Exhibitor's Name _____ Grade in School (1/1/2022) _____ 4-H Club _____

Emergency Contact Number for Fair – Home Phone _____ Cell Number _____ Parent(s) Name(s) _____

Members must list on this Rabbit Identification Guide the breed, variety, class, sex, and tattoos of all potential rabbits to be exhibited at the County Fair. Exhibitors can pre-enter up to 20 rabbits on the Rabbit online Fair Entry and exhibit up to 14. Exhibitor may show only one animal per class and may exhibit up to 3 breeds of rabbits, but more than 3 breeds can be listed. Write the tattoo down for the rabbit you intend to show. Only the tattoo can be changed at check in, providing the breed, variety, class and sex all stay the same. Meat Classes do not count as a breed. Meat Classes are listed separately from breeds on second page. 4-H member can only exhibit in two of the four meat classes. Meat pens and Single Fryers must get an assigned letter from leader listed on this form. The assigned letter **MUST** appear on this ID form. All new rabbits in your rabbitry need to be purchased by April 15. This includes the doe used for your meat pen. Refer to Rule Book for more information. Only rabbits listed on this rabbit identification form may be exhibited. Remember to enter your rabbits on this form for the Breeders Class, because the Breeders Class it is not on the online entry. Breeders Class entry on page 2 of this ID form.

Breed	Variety Variety – Color	Class Junior, 6/8, or Senior	Sex Buck or Doe	Tattoo Use capital letters and numbers. Print clearly.	Fair Use	Fair Use
<i>Example: Mini Rex</i>	<i>black</i>	<i>Junior</i>	<i>Buck</i>	<i>CJ587</i>		
1.						
2.						
3.						
4.						
5.						
6.						
7.						
8.						
9.						
10.						
11.						
12.						

Breed	Variety Variety – Color	Class Junior, 6/8, or Senior	Sex Buck or Doe	Tattoo Use capital letters and numbers. Print clearly.	Fair Use	Fair Use
<i>Example: Mini Rex</i>	<i>black</i>	<i>Junior</i>	<i>Buck</i>	<i>CJ587</i>		
13.						Fair Use Pen Fees are \$1.00 per rabbit
14.						
15.						# of Rabbits to be shown
16.						\$ Collected
17.						4H Member's Initials
18.						4H Leader's Initials
19.						
20.						
Breeder Class Rabbit – What Breed are you Showing?						

Single Fryers and Meat Pens **MUST** have an assigned tattoo letter on this form. ** To obtain your assigned tattoo letter for the meat pen and single fryer contact:

Cheryl Smith
260-637-5502 or 260-409-9077
cmilhoppers@msn.com

I hereby certify that I own these rabbits and they are in my personal possession and under my daily care.

Signature of 4-H member verifying that the information above is accurate. Date

Signature of parent/guardian verifying that the information above is accurate. Date

Meat Classes	Breed	**Assigned Tattoo Letter <i>and</i> Tattoo of Roaster and Stewer	Fair Use Check rabbits entered to be shown
Single Fryer**		**	
Meat Pen**		**	
Roaster		**	
Stewer		**	

ALLEN COUNTY 2022 RABBIT IDENTIFICATION FORM