

# HORSE & PONY

## Activity Sheet - 2024

### Level 2 - Grades 6-7-8

Due May 24, 2024 in the Extension Office



Allen County 4-H Skills  
for Life  
\$1.00

#### What you will do in this project:

- Enroll in the 4-H program by January 15.
- Complete these activity sheets and turn it in to the Extension Office **by May 24, 2024 or earlier.**
- You do not have to have a horse to participate in a 4-H Horse and Pony Club.
- By May 15 complete and submit the 4Honline Horse ID with color pictures of the animals you intend to show. A maximum of 2 pictures per animal may be uploaded. The pictures must contain the face and all four(4) feet of the animal in the picture. Files must be a jpg, jpeg or png file.
- To enter into the Indiana State Fair, please go to [www.indianastatefair.com](http://www.indianastatefair.com) and enter online. Each exhibitor is required to pay an entry fee at the time of entry. June 1, 2024 is the entry deadline. Late fees apply for entries made after June 1, 2024.
- Attend County 4-H workshops, meetings, and clean up days when offered—at least 2 horse club meetings and 2 riding (outdoor) meetings.
- Refer to the Allen County 4-H Rules Book for a complete listing of all regulations concerning this project.
- Complete FairEntry online by published deadline-May 24.
- **New for 2024:** To exhibit beef, dairy, swine, goats, sheep, llama/alpaca, horse and pony, rabbits, and poultry, 4-H members must be certified either through the Youth for the Quality Care of Animals program or Indiana's Quality Livestock Care program. These are annual programs that can be completed via online modules or in-person trainings. For more information about in-person trainings in your county, please contact your County Extension Office. More information about YQCA is available at <http://yqca.org/>. If completing online, please email a copy to your county extension educator.

#### Management Tips:

- Provide clean, fresh water to horses and ponies at all times. Horses will drink anywhere from 10-12 gallons of water per day. Ponies will drink a little less.
- Feed horses and ponies at least two times a day and at the same time every day.
- Make sure your horse/pony finishes their feed. Watch to see that animals on turnout are not being chased away from their food by other bossy horses or ponies.
- Check daily for injuries, sickness, unusual things or changes in behavior. You should spend enough time with them that you know when they are a little "off".
- Provide shade from the sun and protection from wind, snow and rain.
- De-worm and remove bots as needed. Treating horses and ponies for external parasites is important for their health and appearance.
- Clean and replace bedding often if horses or ponies are stalled.
- Rinse horses and ponies after you get them sweaty or when they get really dirty. Clean and conditioned hair and skin makes them feel and look better.
- Brush your horses and ponies to calm them and clean and train their hair. This is also a good time to bond with your equine friend.
- Exercise stalled horses or ponies daily; or make sure they have turnout time.
- To finalize preparation for showing, train your horse or pony at least three times a week. Remember, every time you are with them you are training.

4-H Member: \_\_\_\_\_ 4-H Club: \_\_\_\_\_

Grade in School (January 1, 2024) \_\_\_\_\_ Years in this project \_\_\_\_\_

Signature of 4-H Member verifying that you have completed these activities: \_\_\_\_\_

Signature of Parent that you have reviewed this information: \_\_\_\_\_

· 4001 Crescent Avenue · Fort Wayne, IN 46815-4590 ·  
(260) 481-6826 · FAX: (260) 481-6439  
Purdue University, Indiana Counties and U.S Department of Agriculture Cooperating  
An Affirmative Action/Equal Opportunity Institution

#### **4-H Animal Care:**

The Indiana 4-H program strongly supports positive animal care and strongly opposes animal abuse. 4-H is also dedicated to the mission of developing youth and volunteers through "Learning by Doing" programs. 4-H livestock projects teach life skills such as acquiring knowledge, making decisions, and applying leadership skills.

When working and caring for animals, it is important to insure that appropriate safety measures are in place for both the animals and the persons who care for them. Therefore, there is no substitute for knowledge, common sense, and experience.

Animal handlers should study and learn to anticipate an animal's reaction and try and avoid problem situations. It is most important that 4-H members understand an animal's behavior so one can "outsmart" not "out-muscle" an animal. Foremost in the 4-H'er mind should always be safety of the handler and the animal

An animal's good health is often directly related to the environmental factors associated with its living space. The presence of predators, dust, odors, pests, temperature, and humidity has a direct effect on an animal's well-being.

Animals react favorably to daily care and comfortable housing. Consideration should also be given to specific animal needs such as size of their housing space, lighting, and ventilation. The best facilities and equipment cannot and should not be a substitute for daily observation and careful attention to signs of illness, injury, and/or unusual behavior.

\_\_\_\_ Completed On Line 4-H Enrollment by January 15, 2024

\_\_\_\_ Completed Animal ID on Line by May 15, 2024

\_\_\_\_ Turn in Activity Sheets by May 24 to the Extension Office

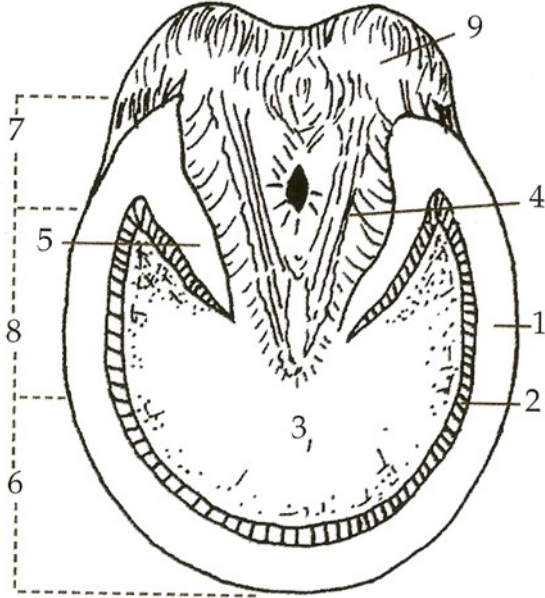
\_\_\_\_ Completed Fair Entry on line by May 24, 2024.

## Level 2

Answers can be found in "Beginning Horse Management" Resource Book 4-H 174.

Use the section titled "Hoof Care and Dental Health" to answer the following questions:

1. Match the number on the hoof diagram with the appropriate name of that part.



- \_\_\_\_\_ Bulb
- \_\_\_\_\_ Frog
- \_\_\_\_\_ Heel
- \_\_\_\_\_ Bar
- \_\_\_\_\_ Sole
- \_\_\_\_\_ Quarter

2. List the four basic points in caring for a horse's feet.

- A. \_\_\_\_\_
- B. \_\_\_\_\_
- C. \_\_\_\_\_
- D. \_\_\_\_\_

3. Describe the process for picking up a horse's rear hoof.

---

---

---

---

4. \_\_\_\_\_ is the most common hoof disease.

5. Horseshoes protect the hoof against \_\_\_\_\_.

6. How fast do healthy feet grow?

---

---

7. How do you care for dry brittle hooves?

---

---

---

8. List four reasons you would put shoes on a horse.

- A. \_\_\_\_\_
- B. \_\_\_\_\_
- C. \_\_\_\_\_
- D. \_\_\_\_\_

9. What signs indicate your horse's shoes need to be reset?

---

---

---

---

Answer the following general questions:

10. Without naming any names, discuss a practice that you have seen or heard about that you think was an unethical practice in relationship to showing an animal.

---

---

---

---

11. In thinking about your answer to the previous question, why do you feel that this practice was wrong?

---

---

---

---