

Have Fun

Make Friends

Go Places



protected under 18 U.S.C. 707



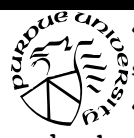
Join 4-H



Cooking Corner

Knowledge To Go

Purdue Extension
1-888-EXT-INFO
www.four-h.purdue.edu



4-H offers hundreds of different ways to learn and do new things. Here are some activities you can do to learn about pets.

4-H is the nation's largest youth service organization. It helps young people develop and improve life skills such as self-confidence, leadership, citizenship and communications.

Why should youth join 4-H? Through 4-H, you are exposed to fun and challenges that bring about education in numerous areas. With 4-H, you can: Have fun, make friends and go places! For information on joining Indiana 4-H, please call 1-888-EXT-INFO or visit us at www.four-h.purdue.edu.

Here are some tasty treats you can make for your cat or dog. Remember to always have an adult help out when using the oven. Don't give more than two or three treats to your pet per day.

Cat Cookies

- 1 cup whole wheat flour
- 1/4 cup soy flour
- 1 teaspoon catnip
- 1 egg
- 1/3 cup of milk
- 2 tablespoons wheat germ
- 1/3 cup powdered milk
- 1 tablespoon unsulfurated molasses
- 2 tablespoons butter or vegetable oil

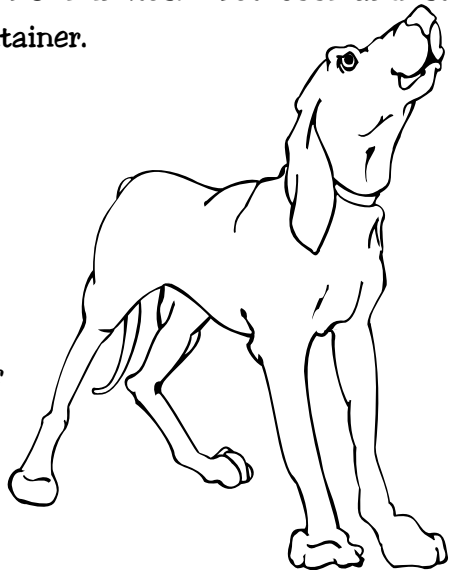
Preheat oven to 350 degrees. Mix dry ingredients together. Add molasses, egg, oil and milk. Roll out flat onto oiled cookie sheet and cut into small, cat bite-sized pieces. Bake for 20 minutes. Let cool and store in a tightly sealed container.



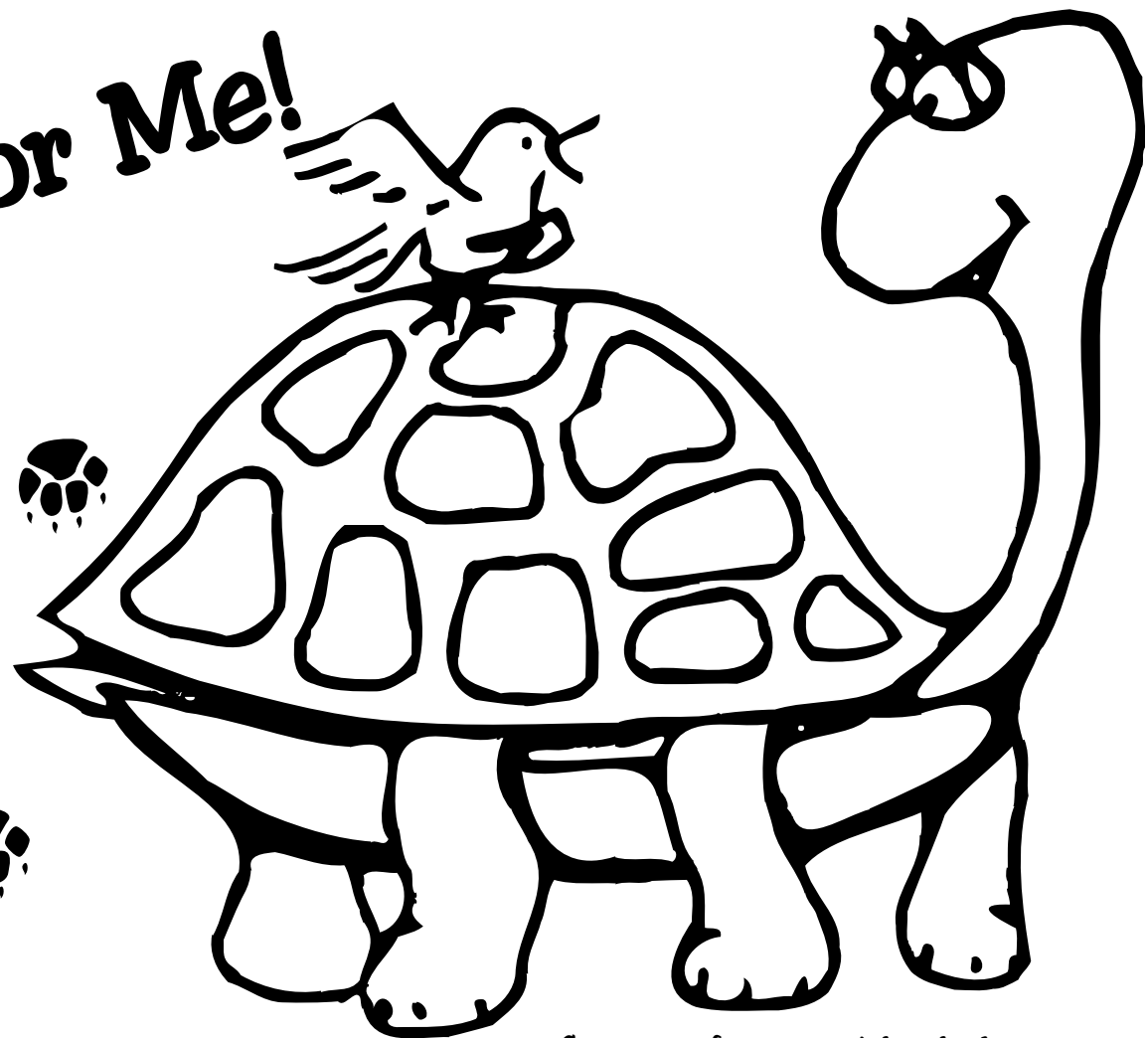
Homemade Dog Biscuits

- 5 cups whole wheat flour
- 1 cup milk
- 2 eggs
- 10 tablespoons vegetable oil
- 1 teaspoon garlic or onion powder
- 1 teaspoon salt
- 1/2 cup cold water
- 1 tablespoon bacon grease

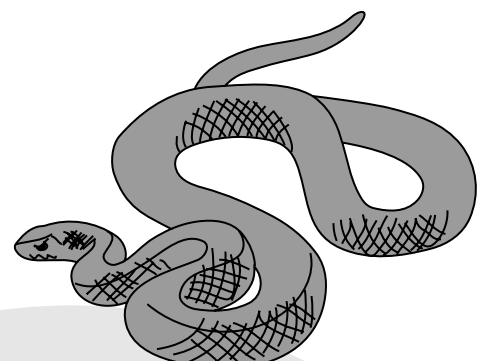
Pinch off pieces of dough and roll them into balls or bone shapes. Put on a greased cookie sheet and back at 350 degrees for 30 to 40 minutes. Let them cool and then store in an airtight container.



Color Me!



Courtesy of www.squiglyshouse.com



Pet Similes

A simile is used to compare two unlike things using like or as. Favorite pets are sometimes used to describe the actions of people. Fill in the pet that matches the description. The first one is done for you!

- Slow as a turtle
- Quacks like a _____
- Quiet as a _____
- Flies like a _____
- Swims like a _____
- Silly as a _____
- Soft as a _____
- Strong as a _____
- Curious as a _____
- Slithers like a _____
- Playful as a _____

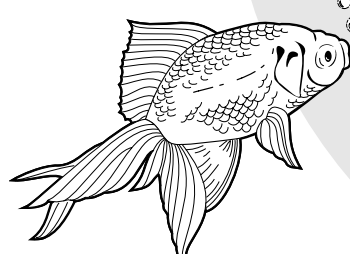
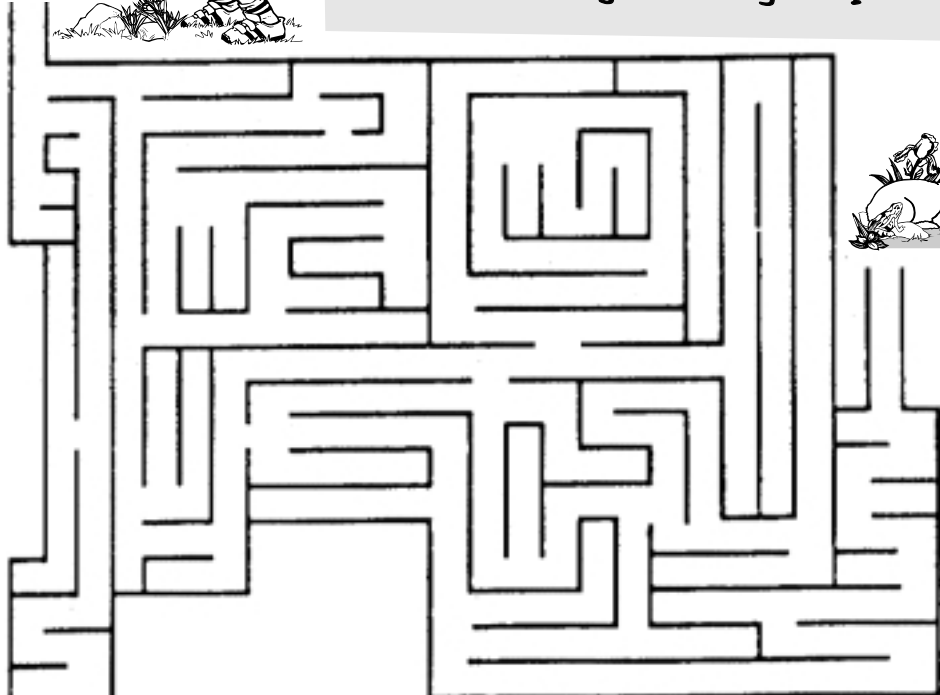
Word Bank

- duck
- chick
- goose
- mouse
- puppy
- snake
- bird
- cat
- fish
- horse

Start



This little boy has lost his rabbits. Help him find them by following the path.



duck, mouse, bird, fish, horse, chick, snake, cat, puppy

Answers