

# May 2024 Newsletter

Dear Friends,

It's starting to look like summer finally. A few more May showers and days of school then it's fair time. As your weekends get busier and busier don't forget to take some time for yourself. May is mental health awareness month. The National Alliance on Mental Illness (NAMI) campaign this year is "Take the Moment" which emphasizes the importance to take time to prioritize your own well being without the guilt or shame of letting others down or the stigma involved in seeking help. To learn more about this campaign check out this [video](#) or go to

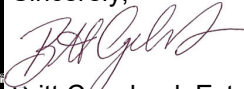
[www.nami.org/get-involved/awareness-events/mental-health-awareness-month/#take-the-moment](http://www.nami.org/get-involved/awareness-events/mental-health-awareness-month/#take-the-moment). Consider taking a moment to construct a self-care action which can be as simple knowing when your stress "check engine light" comes on and having activities or breathing exercises at the ready you can complete at the office, school or in your home. Or simply take a moment to check in on a friend and ask them how they are doing.

In 4-H news Tagging is right around the corner! We are preparing for Fair already in the office. We are currently in need of 4-H Project superintendents for a few poster projects. If you are willing to help out in this capacity please reach out. We are need of more Arts and Crafts Superintendents, Aerospace and a few more Natural Resource based projects.

We hope you keep reading about what's coming up and as always please reach out with any questions.

*The next 4-H Fair Board meetings will be June 6th and June 27th at 7 pm in the Community Building. The next Extension Board Meeting will be May 6th at 6:00 pm.*

Sincerely,



Britt Copeland, Extension Educator

## In this Issue

- 2 Toxic Plants, Callery Pear Trees
- 3 Tagging Day information & May 15th Deadline
- 4 Quality Care, Junior Leaders
- 5 Beef Bootcamp, FAMACHA, Indiana 4-H Ambassador Program
- 6 Jefferson County Classic, Mini Day Camp
- 7 Club Leader Updates, Graduating Senior Information
- 8 Fair Entry is coming! 2024 4-H Fair Schedule
- 9 Quilt Show, Mental Health Awareness Month, Indiana Food Vision, Farmers Market SNAP Programs
- 10 Upcoming Events

## Staff Directory

### Britt Copeland

County Extension Director  
4-H/ANR Extension Educator  
copelanb@purdue.edu

### Kasie Bachmann

Office Manager  
kbachman@purdue.edu

### Diane Thorpe

Extension Program Assistant  
thorped@purdue.edu

## New Face in the Extension Office

Please help us welcome our summer intern Jorja Hazelwood!

Jorja will start in the office the middle of May to assist with the 4-H Fair and programs such as Mini 4-H Day camp. Jorja is currently pursuing an Agriculture Major with a concentration in Animal Science at Wilmington College in Ohio. She is a former Jefferson County 4-H member who has shown swine, garden and vet science.

We are excited to have her talents this summer!



# Agriculture & Natural Resources

## Are There Toxic Plants In Your Pasture Or Hay?

MAY 3, 2024 BY: [KEITH JOHNSON](#)

Recent conversations with individuals about poison hemlock and cressleaf groundsel, plants with toxicity concerns, prompts me to inform producers and agricultural professionals about the “Toxic Plant Exhibit” at the Southern Indiana Agricultural Center. The exhibit has 21 plants, each growing in a two-foot diameter ring. Placards identify the plants. Each placard also has a QR code that takes you to [Toxic Plants](#)



[\(purdue.edu\)](#). Information provided includes photographs, general growth characteristics, details about where the plant is most likely found and when it is of most concern, what is known about toxicity symptoms, and amount of the plant consumed that can cause symptoms and possible death. The team that developed the exhibit were Jacob E. Tower, Purdue undergraduate student; Grant Burcham, Animal Disease Diagnostic Laboratory Diagnostician; Jason Tower, Southern Indiana Purdue Agricultural Center Superintendent; Molley Hasenour, Purdue Extension Educator; Keith Johnson, Purdue Forage Specialist, and Marcus Mues, Purdue Agronomy Digital Content Specialist. Visiting this website to learn about some plants that may cause livestock problems before the plant is grazed, or fed as hay or silage is encouraged.

## Invasive Bradford/Callery Pear: Why it is so detrimental and what to plant instead.

May 3, 2024 By: [Ben McCallister](#)

Most people these days have, at the very least, heard of Callery and Bradford pear trees and know something about the invasiveness of this ornamental street tree. But I still get questions about what it is and why it's so bad. So, I'd like to offer a little history of this infamous tree. Where did it come from, why it's been so popular and such an awful tree to plant, and some suggestions for better species to plant in its place.

*Pyrus calleryana*, the Callery pear (Fig. 1), was originally introduced from Asia to the United States in 1908. This was done in an attempt to breed pear trees that were resistant to fire blight, a bacterial disease that can spread rapidly causing leaves and branches to blacken as if burnt by fire, eventually resulting in death. Along with its resistance, the Callery pear was tested as a rootstock for the edible European pear (*Pyrus communis*) and its vigor in growth.

Callery Pear grows to a height of 30 to 50 feet with a spread up to 30 feet wide. Thick leaves grow alternately, are dark green, grow with sharp spurs along branches, and turn reddish-purple in the fall. They are one of the first trees to bloom and begin to grow in the spring and one of the last to drop their leaves in the fall. They produce a beautiful show of white flowers in the spring that have an unfortunate odor and an abundance of small fruits in the fall that are spread by birds and other wildlife. In fact, invasive European Starlings are one of the primary species that feed on and spread the fruits and seeds. Stems are smooth with light-colored lenticels while more mature stems are light to medium grey with fissures along the bark. Branching is usually upright in structure leading to poor branch unions that are weak and prone to failure. They grow quickly and tolerate a wide variety of planting locations and conditions, which led to the widespread use as both street and ornamental trees in urban plantings.



The Bradford pear tree is a variety of Callery pear cultivated in the early 1950s as a sterile tree without sharp spurs. Unfortunately, it cross-pollinated with other varieties leading to the rapid spread and out-competing of native species that we see in fields, along roadsides, and in forests today (Figs. 2 & 3). As awareness of the environmental issues of Callery pear spreads, local and state governments are working on removing them from the landscape. It is often joked that pruning these trees is extremely simple, involving a single cut at the base of the tree.

Due to the extensive use of these trees over the past 7 decades though, removals can lead to a large loss of existing canopy, especially with mature trees. This loss is worth negating the ecological damage they cause and with patience can be replaced with more appropriate species. Suggestions include serviceberry (*Amelanchier laevis*), flowering dogwood (*Cornus florida*), redbud (*Cercis canadensis*), and crabapple (*Malus sylvestris*).

For more information on invasive pear trees or on how to remove them see the links below or contact me at [bmccalli@purdue.edu](mailto:bmccalli@purdue.edu)

<https://www.purdue.edu/fnr/extension/id-that-tree-invasive-callery-pear/>

<https://arboretum.harvard.edu/stories/the-rise-and-fall-of-the-ornamental-callery-pear-tree/>



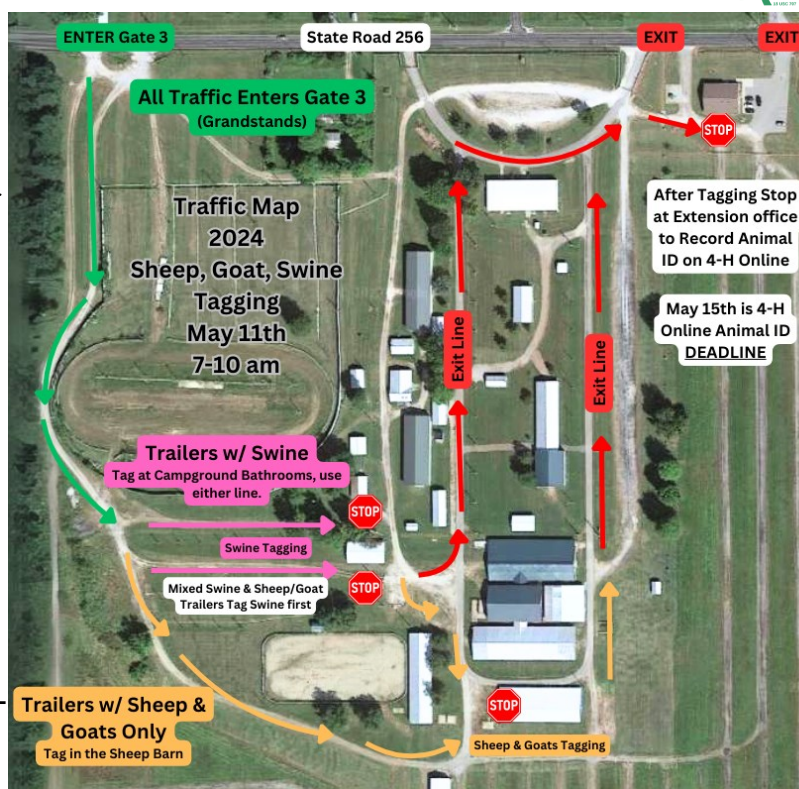
# 4-H Youth Development



## May 11th Tagging Day for Goat, Sheep & Swine 7 am -10 am

Any youth planning to show sheep, goats, or swine at the 4-H County Fair must tag & register their animals on 4-H Online. Previously shown females that have the proper ID do not need to come to tagging again.

- All Traffic Enters Gate 3 (Grandstands).
- Trailers w/ Swine Only turn into campgrounds (either line).
- Mixed Trailers w/ Swine & Goats/Sheep go through the campgrounds (either line) first then go to sheep barn.
- Trailers with only Sheep and Goats proceed around the horse arena to the sheep barn
- Exit Fairgrounds using Extension office parking lot and/or Gate 1. Stop at office to register animals before leaving.



## May 15th 4-H Online Animal ID DEADLINE

All 4-H Beef, Dairy, Goat, Sheep, Swine & Horse and Pony Projects must have their animals identified and registered on 4-H Online by May 15th to exhibit in 4-H.

### What does my Livestock Animal Need to be Identified?

- **County Tag and/or RFID Tag** - If your female animal has previously been shown and tagged they should not return to tagging days. They do however have to be **re-enrolled each year**. For a complete list of state requirements consult the 2024 [Indiana 4-H Animal Identification](#) Document.
- **Birthdate and Weight if Applicable**
- **Premises ID** - Premise IDs are issued by the Board of Animal Health and indicate where an animal originated in case there is a contamination in the food supply. New Families need to apply for a Premises ID at this website: [www.in.gov/boah/traceability-and-premise-id/indiana-premises-registration/](http://www.in.gov/boah/traceability-and-premise-id/indiana-premises-registration/)
- **County only Forms for Born and Bred if Applicable**

## May 15th 4-H Online Animal ID Deadline Help Opportunities

### > Enroll your Animals in the Office at Tagging

Drive your trailer behind the extension office and to get it all done the same day.

### > Extended Office Hours on May 15th

Staff will be set up in the community building with computers from 5-8 pm to help.

> [Consult this Help document when completing enrollment at home](#)

## 5 Steps For Livestock Exhibitors to be Fair Ready!

- 1 Properly Identify your Animal at the tagging days
- 2 Enroll your Animal on 4-H Online by May 15
- 3 Complete required Indiana 4-H Quality Livestock Care Training or online YQCA
- 4 Fill out a Livestock Record Sheet or Attend 1 Educational Program
- 5 Enter your Show Classes on Fair Entry between June 1- June 24

Purdue University Cooperative Extension is an Equal Access/Equal Opportunity Institution



# 4-H Youth Development



Extension - 4-H Youth Development



## BEEF BOOT CAMP MONDAY, JULY 15

SOUTHERN INDIANA PURDUE AG CENTER  
11371 E PURDUE FARM RD, DUBOIS, IN 47527

Participants will learn about artificial insemination, reproductive management, herd genetics, anatomy, BCS, nutrition, and more during this hands-on 4-H Spark Club!

- 9 A.M. -3 P.M.
- 4-H Grades 6-12
- Cost: \$150/ youth
- Class size limited
- Register by July 1

812-338-5466, Crawford Co.  
812-438-3656, Ohio Co.

REGISTER AT: 4-H ONLINE EVENTS



Purdue University is an equal opportunity/equal access/affirmative action institution.

## Indiana 4-H Ambassadors Program Deadline to apply is May 15th

The mission of the Indiana 4-H Ambassador program is to empower teen 4-H leaders with the knowledge, skills, and aspirations necessary to be effective advocates for Indiana 4-H Youth Development.

We will strengthen and expand upon 4-H Ambassadors' current leadership abilities so that they may serve as positive role models for younger youth; build meaningful partnerships with other 4-H teens, adults, and professionals, as well as community partners and sponsors; and promote the 4-H mission in Indiana.

Eligible youth are in grades 9-11 and have been a 4-H member for at least 2 years. Applications will be due May 15th.

What does being an Indiana 4-H Ambassador entail?

- Promote 4-H with potential members, parents, and the general public
- Help conduct statewide 4-H events
- Organize 4-H promotional activities
- Represent 4-H in a public relations role with community partners and sponsors
- Develop personal leadership skill and self-confidence
- Youth will submit a short application and video to apply.

Link to [Application](#)

[Video Submission Link](#)

Contact Rachel Haselby Extension Specialist – 4-H Computer Science State 4-H Office at rhaselby@purdue.edu or at 765-494-8435 with any questions.

## 4-H Fashion Revue is June 25th

All members enrolled in the various sewing projects are invited to participate in the **Jefferson County 4-H Fashion Revue on June 25<sup>th</sup> at 6:00 p.m.** Registration will begin promptly at 5:30 p.m.

**Participants will need to turn in a Narration Form for the host to read while the 4-H member models their clothes.** This will be collected on the 4-H Online event registration. Click here to fill it out: [fashionrevue.4honline.com](https://fashionrevue.4honline.com). Or call or stop by the office for us to fill it out for you.

## FAMACHA CERTIFICATION PROGRAM

SMALL RUMINANT PRODUCERS & FOR 4-H MEMBERS AGE 13 AND UP  
May 15, 2024 at the Jefferson County 4-H Fairgrounds

FAMACHA® is a diagnostic test to help small ruminant producers identify animals that require anthelmintic treatment and those which do not require deworming. The tool is a card that matches lower eyelid color to anemia levels, an indicator of clinical barber pole worm infection.

This training is open to 4-H members and the general public. The event will be followed by a Indiana Quality Livestock Care Training (the required training for Indiana 4-H Livestock Exhibitors) so 4-H Families can get the most out of their evening. **Participants must be 13 years of age to receive the certification.**

Registration is required to attend and space is limited.

Register at [FAMACHA.4honline.com](https://FAMACHA.4honline.com) before May 6, 2024



FAMACHA Training Cost is \$35 per participant.

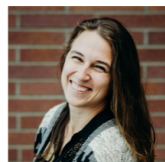
Enrolled and Approved Jefferson County 4-H Members may participate *at no cost!* Email [copelanb@purdue.edu](mailto:copelanb@purdue.edu) for a *coupon code before registering!*

Indiana 4-H Quality Livestock Care Training Cost is \$3 per participant. 4-H Participants from any county 4-H program are welcome.



### Agenda

- 5:00 pm Check In
- 5:30- 6:30 pm FAMACHA Training
- 6:30- 6:50 pm Hands On Practice
- 6:50 pm Break- General Public Released
- 7:00- 8:00 pm Indiana 4-H Quality Livestock Care Training



### FAMACHA Trainer

Cora Reinbolt  
Ag and Natural Resources Educator  
Purdue Small Ruminant Team

Questions can be directed to the Purdue Extension Jefferson County Office. Call (812) 265-8919 or email [copelanb@purdue.edu](mailto:copelanb@purdue.edu).



Extension - Jefferson County





# 4-H Youth Development



## Indiana 4-H Quality Livestock Care

QLC is required for every Indiana 4-H member showing livestock. If you cannot attend the in person Jefferson County Training you complete Youth for the Quality Care of Livestock (YQCA) online. We do not have login access to this program anymore so you will have to email proof of completion to [copelanb@purdue.edu](mailto:copelanb@purdue.edu). Please register for QLC trainings on 4-H Online. At the door registrations also accepted.

**2nd Training with FAMACHA Training Preceding it- May 15 @ 7 pm in the Community Bldg. FAMACHA training starts at 5:30 pm. There will be snacks at 6:50 pm.**

**3rd Training – June 25 @ Noon in the Community Bldg.**

**4th and Last Training – July 1 @ 6 pm in the Community Bldg.**

## Junior Leaders Next Meeting: **May 21st at 4:00pm at the Boys & Girls Club**

The Junior Leaders have been busy planning for an eventful summer! If you are unable to attend the normal Junior Leader meetings but would still like to help out with some of our outings and Fair Time Leadership roles contact the 4-H Educator. Junior Leaders is for youth in grades 7-12 who are interested in learning leadership skills and helping with acts of service. Current Junior Leaders should enroll in the Junior Leaders project to receive email reminders and text @c8k6cb to 81010 to join our text group.

Sign up for these events in the links below.

**May 21st– Outing to Boys and Girls Club**  
Meet at the Boys and Girls Club Afterschool, 3:30ish– 5:00pm. We will be doing a similar format to the La Casa Amiga outing. Sign up to lead a project demo at the April Meeting.

**June 11th– Hike & Pitch In Lunch at Clifty**  
We will be taking a guided hike on June 11th at 10 am. To comply with university policies please register on 4-H online events here: [jrleaderhike.4honline.com](http://jrleaderhike.4honline.com). More details will be emailed out closer to the event.

**June 25th– Host Fashion Revue**  
We will need an emcee for Fashion Revue! If you are interested in helping out in anyway sign up at the April Meeting.

**June 29th– Mini 4-H Day Camp**  
It's all hands on deck for Mini 4-H Camp! We will need help setting up around 9 am and will be done by 3:00 pm. We are especially looking for members to bring large animals to the fairgrounds. In March the group chose "Space" for this years theme. For compliance with Universi-

ty policies I need Junior Leaders to sign up here: [mini4h-daycamp.4honline.com](http://mini4h-daycamp.4honline.com)

**July 2nd– Judge Helpers Needed for Project Check In**  
Junior Leaders help with Judges Dinner, running projects and more. Find Britt in the Community Building for Judges Orientation at 3 pm or talk with Kasie in the old exhibit hall whenever you are done submitting your own projects.



**June 11, 2024  
Clifty Falls  
State Park**

Hiking Trail #7 with Park Naturalist at 10 am

Pitch-In Lunch at Noon (Shelter House Location to be emailed)

Discounted Admission for Picking up Trash

Register Here: [jrleaderhike.4honline.com](http://jrleaderhike.4honline.com)

**4-H Junior Leaders Hiking Outing**

**Open to all 4-H Club Members!**

Grades 7 & Below must be accompanied by a guardian.



# 4-H Youth Development



**MISSION** Purdue Extension- Jefferson County  
 Call: (812) 265-8919  
**COMMAND** Visit: 3767 W SR 256 Madison, IN 47250

Join us for a day of fun & learning on the Jefferson Co 4-H Fairgrounds!

**What:** Mini 4-H is a noncompetitive, exploratory youth development program that gives members the chance to experience 4-H Healthy Living, STEM, and Citizenship programming through hands-on activities. Mini 4-H is for youth in grades K-2.

**When: Saturday, June 29 from 10am - 2pm** at the Jefferson County 4-H Fairgrounds. Check in is located in the Community Building.

**Cost:** This event is free to all Mini 4-H members. Not a 4-H member? It is \$1 to enroll in Mini 4-H for youth in Kindergarten through second grade. Go to [v2.4honline.com](http://v2.4honline.com) to enroll!

**How to Register:** Please register by June 21, 2024 on 4-H Online Events, the link below or by calling the Office.

Go to [mini4h-daycamp.4honline.com](http://mini4h-daycamp.4honline.com) to register today!



**JEFFERSON COUNTY**  
**CLASSIC**  
**TWO RINGS, DOUBLE THE POINTS**  
 RING A JUDGE: GARRIT SPROULL      RING B JUDGE: GARRETT LOWES

**ENTRY**  
 PREREGISTRATION ENCOURAGED ON SHOWMAN.APP  
 \$30 PER HEAD PER SHOW

**CHECK IN**  
 MAY 12TH 7-9:30 AM

**SHOWMANSHIP**  
 \$10 ENTRY  
 START TIME IS 11:00 AM,  
 BREEDS TO FOLLOW

**ADDITIONAL INFO**  
 BARROWS AND CROSSBRED GILTS WILL BE SHOWN BY DECLARED WEIGHT (15 LB. WEIGHBACK)

**IJLA SANCTIONED SHOW**  
**ALL COMMITTEE DECISIONS ARE FINAL**

**5.12.24**

**GRAND - \$500**  
**RESERVE - \$250**  
**3RD OVERALL - \$150**  
**4TH OVERALL - \$75**  
**5TH OVERALL - \$50**

**LOCATION**  
 JEFFERSON COUNTY FAIRGROUNDS  
 3852 W SR 256 MADISON, IN 47250

**CONTACT**  
 BRICE GRAY 812.599.6182  
 TANNER MAHONEY 812.701.6698  
 BRENT GRAY 812.599.5296



## 4-H Club Leader Updates



### Barrel Painting Contest

The 2024 Barrel Painting Contest theme is “Inspire Kids to Do.” We encourage you to drive back to the beef barn and pick up a trash barrel that needs some love or has 4-H member names on it who are now grandparents and give it a fresh coat of paint! Make sure your masterpiece has the Club Name, Year and Theme painted on it. Drop completed Barrels in the Exhibit Hall Breezeway anytime before project check in day to be judged.



### 4-H Club Photos for the Fair Preview in the Paper

Email your club photos to the office as close to June 1st as you can to be included in the fair preview. Please include a list of members who are pictured.

### Coming Soon: 4-H Leader Recreation Library

We are compiling games and craft supplies for leaders to check out from the office to make your 4-H club meetings more fun! Right now we have cornhole, bottle rocket launcher, sheep and goat learning labs, snap circuits, various stem games and a flag football set. While we are still getting organized please reach out to the 4-H educator well in advance if you wish to check out any items.

### Trophy Sponsorships

If you or your club has agreed to sponsor a trophy for the 4-H fair please get those payments into the extension office as soon as possible. Linda Shimfessel or our office can answer questions about trophy payments.

### Record Sheets, Green Folders, and Paperwork: A Review of the Changes

All record sheets have been discontinued except Livestock Record sheets. The only poster projects that need paperwork are the few that require a recipe card or skills sheet that you turn in directly to the judge on project check in day. If livestock members complete a species specific educational program in any county and fill out the Livestock Record Alternative Form in the back of the handbook they don't have to do a record sheet either. All you need to do to receive premium money is be on Fair Entry with your projects and bring the alternative form or livestock record sheet with you the Thursday of fair. Green folders are also fully discontinued and do not need to be turned into the office at fair. There is no per project fee any more either. 4-H members pay one time for as many projects as they want to take. \$15 state fee and \$5 county fee. Mini 4-H is a \$1 county fee. If club leaders need more information on these updates to share with their clubs contact the office.

## Information needed from Graduating Seniors!

### To Receive your 4-H Senior Plaque, Gift and Spotlight at Fair

Graduating Seniors in our program please send us the following items by May 15th. You can email copelanb@purdue.edu or use our drop box link. (1) A high-quality digital photo of yourself to this drop box from your smart phone or computer: <https://bit.ly/24seniorphoto> and (2) A brief autobiography to the same link in a word document or through email (2 paragraphs or less).



# 4-H Youth Development



**FairEntry is Coming!**  
**Open June 1 - June 24th**

Fair Entry is the final step in getting your projects ready for the fair. This system takes all of the information you entered into 4-H Online and lets you sign up for the classes and divisions you will exhibit at the fair. This is the system we use to build livestock show schedules and print entry tags. **Please help us by completing fair entry by June 24, 2024!**

**Go to [Jeffersoncounty.fairentry.com](http://Jeffersoncounty.fairentry.com) on June 1st to get fair ready!**

We understand that finding reliable internet access is a challenge. Please call the Extension Office at (812) 265-8919 or stop by before June 30th so we can enter your divisions and projects for you. **You cannot register your project on the Fair Entry website if you have not paid the \$15 State Program fee and been marked "active" on 4-HOnline.**

## 2024 Jefferson County 4-H Fair Schedule

This is republication of the schedule in the 4-H handbook. The full schedule of non 4-H Events (such as Poor Jack Times, Grandstand Events, Baby Contest) will be published in June when finalized by the fair board. Please note project check in is on a Tuesday this year due to the 4th of July!

### Tuesday, July 2<sup>nd</sup>

4:00pm-7:00pm – Project Check-In for Exhibit Hall 4-H & Mini 4-H Projects

### Friday, July 5<sup>th</sup>

3:00pm-7:00pm – Enter Poultry and Rabbits

### Saturday, July 6<sup>th</sup>

7:00am-9:00am – Enter Swine

9:00am -11:00 am – Swine Weigh In

8:30am-11:30am – Enter Open Class

10:00am – 4-H Poultry & Other Fowl Show

10:00am – 4-H Dog Obedience & Agility

2:30pm-4:30pm – Enter Beef

4:00pm-9:00pm – 4-H & Open Class

5:00pm-8:00pm – Enter Sheep & Goats (check with Superintendents prior to penning)

Exhibit Halls Open

### Sunday, July 7<sup>th</sup>

1:00pm – 4-H Horse Show – English & Contesting

2:00pm – 4-H Tractor Operator Contest

4:00pm-9:00pm – 4-H & Open Class Exhibit Halls Open

### Monday, July 8<sup>th</sup>

6:00am – 4-H Livestock Auction Pictures (show attire recommended)

6:00am – Beef, 6:30am – Swine, 7:00am – Sheep, and 7:30 Goat

6:00am-11:00am – Enter Dairy Heifers

9:00am – 4-H Rabbit Show

10:00am – Hutchinson Award Sheep Test

4:00pm-9:00pm – 4-H & Open Class Exhibit Halls Open

5:30pm – 4-H Goat Show

### Tuesday, July 9<sup>th</sup>

8:30am – 4-H Horse Show – Western

4:00pm-9:00pm – 4-H & Open Class Exhibit Halls Open

5:00pm – 4-H Swine Show

### Wednesday, July 10<sup>th</sup>

9:30am – Farm Bureau Kiddie Tractor Pull

10:00am – 4-H Dairy Show

2:00pm – Poultry & Rabbit Ambassador

2:00pm – 4-H Cat Show

4:00pm-9:00pm – 4-H & Open Class Exhibit Halls Open

5:00pm – 4-H Sheep Show

### Thursday, July 11<sup>th</sup>

8:00am – 4-H Beef Show

2:30pm – 4-H Club Challenge

4:00pm-9:00pm – 4-H & Open Class Exhibit Halls Open

-4-H Horse Fun Show & Pitch In

7:00pm – Mini 4-H Barn Blast

11- Midnight – Swine Take Home Release

### Friday, July 12<sup>th</sup>

1:00pm – 4-H Livestock Auction

4:00pm-9:00pm – 4-H & Open Class Exhibit Halls Open

5:00pm – Auction Dinner

6:30pm – Round Robin Showmanship

11pm -Midnight – Livestock, Horse & Pony, Rabbit and Poultry Release/Clean Up

*Must be cleared with Superintendent*

### Saturday, July 13<sup>th</sup>

10:00am-12:00pm – Open Class Exhibits Released

12:00pm-4:00pm – 4-H Exhibits Released

2:00pm – Annual Fair Board Meeting

4:00pm – 4-H Awards Program



JEFFERSON COUNTY EXTENSION  
HOMEMAKERS



## Quilt Show

May 17th & 18th  
10:00AM-5:00PM

JEFFERSON COUNTY 4-H FAIRGROUNDS  
COMMUNITY BUILDING  
3852 W STATE RD 256, MADISON, IN. 47250

LUNCH, VENDOR CRAFTS AND MORE  
WILL BE AVAILABLE FOR PURCHASE

PROCEEDS FROM THE SHOW GO TO THE JEFFERSON  
COUNTY EXTENSION HOMEMAKERS SCHOLARSHIP FUND

THE COMMUNITY IS INVITED TO ENTER QUILTS FOR  
THE SHOW! QUILTS ARE TO BE ENTERED ON  
THURSDAY, MAY 16TH FROM 3PM-6PM.

PLEASE CONTACT THE PURDUE  
EXTENSION JEFFERSON CO. OFFICE  
AT (812)265-8919 FOR MORE INFO

Admission \$5

### Indiana Farmers' Market Nutrition Programs eFMNP Regional In-person Farmer Enrollment Events

Produce growers can sign up to accept WIC & Senior FMNP benefits electronically

Farmers and Market Managers can sign up to accept SNAP

To register for your selected event, scan the QR code




- May 6, 2024  
3-7pm CST  
2293 N Main St  
Crown Point 46307
- March 25, 2024  
9am-1pm  
5117 S Ironwood Dr  
South Bend 46614
- April 9, 2024  
4-8pm  
900 Library Plaza  
Fort Wayne 46802
- March 12, 2024  
10am-2pm  
225 S East St  
Indianapolis 46202
- April 18, 2024  
10am-2pm  
1950 S 18th St  
Lafayette 47905
- March 5, 2024  
4-8pm  
1900 E Main St  
Danville 46122
- March 19, 2024  
12-4pm  
2200 E Main St  
Richmond 47374
- May 23, 2024  
12-4pm  
2333 W Industrial Park Dr  
Bloomington 47404
- May 28, 2024  
2-6pm  
128 N Main St  
Versailles 47042
- March 9, 2024  
8:30am-12:30pm CST  
201 E Boonville-New Harmony Rd  
Evansville 47725



or go to  
<https://infmcp.org/food-access/wic-sfmnp-more/>

**PURDUE UNIVERSITY** Extension

*Purdue University is an equal opportunity/equal access/affirmative action institution.*

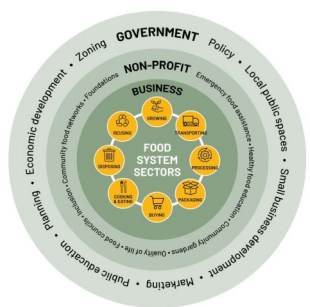


**Cultivating a nourishing and equitable  
food system for all Hoosiers.**

Together, we are building a statewide food vision for Indiana, a roadmap for creating a food system where Indiana communities thrive.

The Indiana Food Vision will create a shared understanding of our food system challenges and opportunities, and unify efforts across the state to:

- Inform decision-makers at the local, regional, and state levels
- Help communities, businesses, and organizations get funding
- Identify what's already working in our food systems
- Foster innovation and collaboration across the public, private, and non-profit sectors
- Support local efforts with statewide information



The Vision will be a roadmap for cultivating a robust, nourishing, and equitable food system. We are leading a planning process to identify the key areas in which policy, programs, and funding can advance a thriving food system.


### Your Voice. YOUR Vision.

The Indiana Food Vision is for every Hoosier who eats or grows food! This effort is organized by a statewide steering committee made up of public & private sector partners, non-profits, and regional food policy council members, in partnership with the Indiana Department of Health & Indiana University.

### Get Involved

We need to hear from you. The Indiana Food Vision is a 'by the people for the people' effort to center the voices of Hoosiers who eat, grow, or buy food. We want to hear about what matters to YOU. Help shape the Vision by taking our survey.

Visit [indianafoodvision.org](https://indianafoodvision.org)



**Take the survey**  
(It is for anyone who lives and eats in Indiana!)



**MENTAL HEALTH  
Awareness  
MONTH**

#MHAM2024

Age joyfully! Consider your passions and interests and pursue something that brings you happiness and fulfillment. Remember that mental health support is available to you if you need it. Visit [samhsa.gov/resources-serving-older-adults](https://samhsa.gov/resources-serving-older-adults) to learn more.

Equal Access/Equal Opportunity Institution

## Upcoming Dates

<u>Date</u>	<u>Event</u>	<u>Place</u>	<u>Time</u>
May 6	Extension Board Mtg.	Extension Office	6:00 p.m.
May 11	Sheep, Swine & Goat tagging	Fairgrounds	7-10:00 a.m.
May 15	4-H Online Animal ID Deadline		
May 15	FAMACHA Certification	Community Bldg.	5:00 p.m.
May 15	Quality Care of Livestock	Community Bldg.	7:00 p.m.
May 17 & 18	Quilt Show	Fairgrounds	10:00 a.m.
May 21	Jr. Leader Outing	Boys & Girls Club	3:30– 5 p.m.
June 1	Fair Entry Opens		
June 8-9	Area 1 4-H Horse & Pony Show	Ripley Co.	
June 11	Jr. Leader Hiking Outing	Clifty Falls	10:00 a.m.
June 14-15	Jefferson County 4-H H&P Camp	Fairgrounds	
June 24	Fair Entry Closes		
June 25	Quality Care of Livestock	Community Bldg.	Noon
June 25	4-H Fashion Review	Community Bldg.	6:00 p.m.
June 29	Mini 4-H Day Camp	Community Bldg.	10:00 a.m.
July 1	Quality Care of Livestock	Community Bldg.	6:00 p.m.

NONPROFIT ORG.  
U.S. POSTAGE  
PAID  
MADISON, INDIANA  
PRMIT No. 15

PURDUE UNIVERSITY COOPERATIVE EXTENSION SERVICE  
Jefferson County  
3767 W SR 256  
Madison, IN 47250-3511  
Cooperating with U.S. Department of Agriculture

