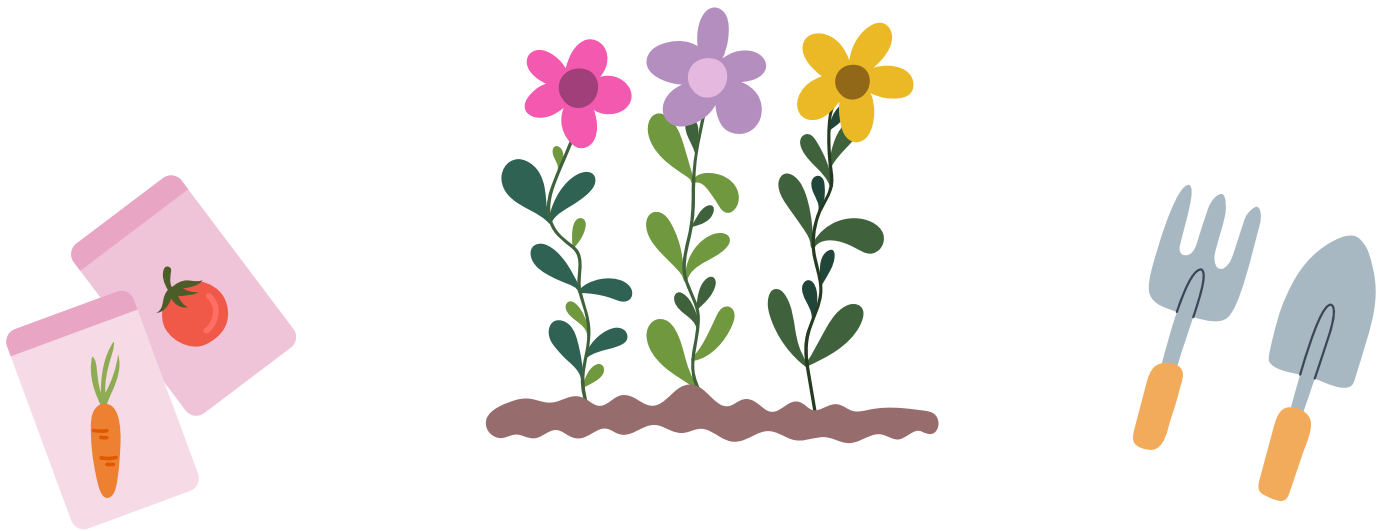


# Mini 4-H Bloom-N-Veggies



## Kindergarten, 1st & 2nd Grades

Purdue University is an equal opportunity/equal access/affirmative action institution.

## Mini 4-H Parent's Page

As a Mini 4-H parent, your job will be to guide and encourage your child through this project. We suggest that you do not complete the activities for them. Instead, help them, guide them, work with them, and let them do all that they possibly can. The 4-H motto is “Learn by doing” and is the best educational tool that we can provide for youth.

If you have any questions about this project, please contact Purdue Extension- Hancock County at 317-462-1113 or [hancockces@purdue.edu](mailto:hancockces@purdue.edu)



## Mini 4-H

Welcome to Mini 4-H! You are now a member of the 4-H family. Mini 4-H'ers have lots of fun. There are many activities for you to explore. You can try new things. You can share it with your friends and family.

An adult can help you with your project, and you can bring your project to the 4-H fair. Many people will be able to see what you have done. You will receive a ribbon made just for Mini 4-H.

The 4-H fair is an exciting time for 4-H members and families. It is a week that allows community youth to show their talents, interests, and enthusiasm for learning!

4-H Symbol: A Four leaf clover with an H in each leaf

4-H Colors: Green and white

4-H Motto: To make the best, better

4-H Pledge: I pledge my Head to clearer thinking

My Heart to greater loyalty

My Hands to larger service and

My Health to better living,

For my club, my community

my country, and my world.



## Mini 4-H Bloom-N-Veggies

Welcome to the Mini 4-H Bloom-N-Veggies project! We are so glad you have decided to join on this wonderful adventure. In this project we will learn to grow flowers and vegetables.

### Planning your garden

You will need to find a spot for your garden. This plot of ground can be a part of an already existing flower bed or garden, or you can find a new spot to use. If you don't have much space you can even have a small garden in a window box or planter.

You will want to choose a spot that is flat, well drained and has sun shining on it all day long. Where ever you decide, check with an adult to make sure the spot you've chosen is okay. You don't want to plant a garden where electrical or phone wires are buried!



## Preparing the Ground

You can prepare the ground in April or May when it is no longer frozen. You will want to have an adult rototill the dirt, or use a shovel to get fresh dirt on top. Make sure there are no weeds or grass in your garden.

## Purchasing Plants

Buy your plants when you can plant them without the risk of them freezing. The standard frost free date in Indiana is May 15, but you can plant some plants earlier if you use caution. When you buy them, ask someone about the plant's needs. How much water do they need? Will they need to have a stake to hold them up? It is best to buy plants from a greenhouse where someone can answer all your questions!

You may also plant seeds instead of already started plants. Green beans and carrots will need to be planted from seeds. However, most vegetables will not be mature enough to exhibit on time if you start them from seeds. If you do decide to start your plants from seeds, follow the directions on the back of the package. Start the seeds inside in small pots several weeks before you plan to plant them in your garden.

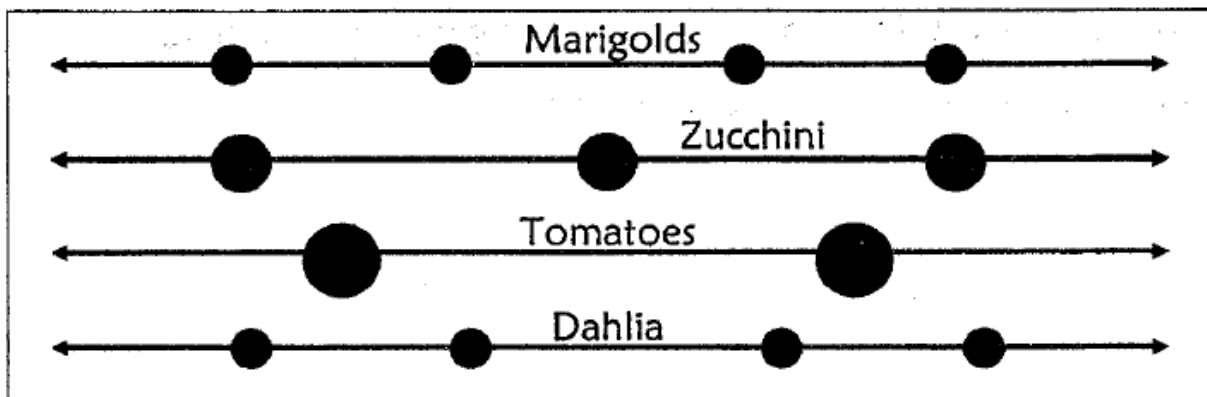


## Planning your garden

You will need to decide what flowers and vegetables you want to grow. Be sure to check you division to see which plants you can turn in. For vegetables, you will want to plant at least three options so you will have plenty to choose from when fair time comes. For flowers, you should plant three to five plants. You can plant both flowers and vegetables, but only one can be turned in at the fair.

Draw a picture or diagram of where you will plant each type of plant. You should plant your plants in rows. They will be easier to weed this way. Make sure you have enough plants of each different variety so you will have enough vegetables to show at the fair!

Here is an example of a diagram of a garden:



## Planting your plants

Different plants need to be planted in different way and at different times. You should be sure to read the tags that come with your plants or ask someone at the store where you bought them to determine how far apart and where to plant your plants. Some plants like the sun and some like the shade

## Taking care of your garden

Your garden will need lots of care if you want to have a good harvest. You will want to keep the weeds out by using a hoe. You can also ask as adult to help you fertilize it one or two times. You should also make sure the plants have plenty of water and sun.



## Harvest your plants

In a couple of months, you will get to harvest the vegetables and flowers you have taken such good care of! Be sure to pick plants that are ready to be harvested.

## Exhibit your plants

Flowers should be exhibited in disposable plastic or glass container. Stems should be about 5 inches. Kindergarten will exhibit one bloom. First grade will exhibit two blooms. Second grade will exhibit three blooms. Flowers should be zinnias or marigolds for kindergarten and first grade. Second grade can exhibit zinnias, cosmos, dahlias, or marigolds.

Vegetables should be exhibited on a disposable plate. Kindergarten and first grade should exhibit one plate. Second grade can exhibit two plates.

Type	Number	What it should look like
Zucchini or Summer Squash	1	Should be all green or all yellow depending on the variety. Should be small and tender, not overripe.
Carrots	3	Should be long and orange with top leaves cut about 1/2 inch long.
Cabbage	1	Heads should be solid and crisp. Should be red or green in color. Leave 3-4 outside leaves.
Tomatoes any kind	3	Should all be same size and type. Remove stems. Should be almost completely red.
Green beans	10	Should be about 4 inches long. Should be brittle, firm, seeds should not show on outside.
Peppers any kind	3	Should be firm, smooth, and mostly one color. Trim the stems to about 1/4 inch.



Mini 4-H

Name: \_\_\_\_\_

Grade: \_\_\_\_\_

Project: \_\_\_\_\_

Mini 4-H

Name: \_\_\_\_\_

Grade: \_\_\_\_\_

Project: \_\_\_\_\_

Mini 4-H

Name: \_\_\_\_\_

Grade: \_\_\_\_\_

Project: \_\_\_\_\_

Mini 4-H

Name: \_\_\_\_\_

Grade: \_\_\_\_\_

Project: \_\_\_\_\_

Mini 4-H

Name: \_\_\_\_\_

Grade: \_\_\_\_\_

Project: \_\_\_\_\_

Mini 4-H

Name: \_\_\_\_\_

Grade: \_\_\_\_\_

Project: \_\_\_\_\_