



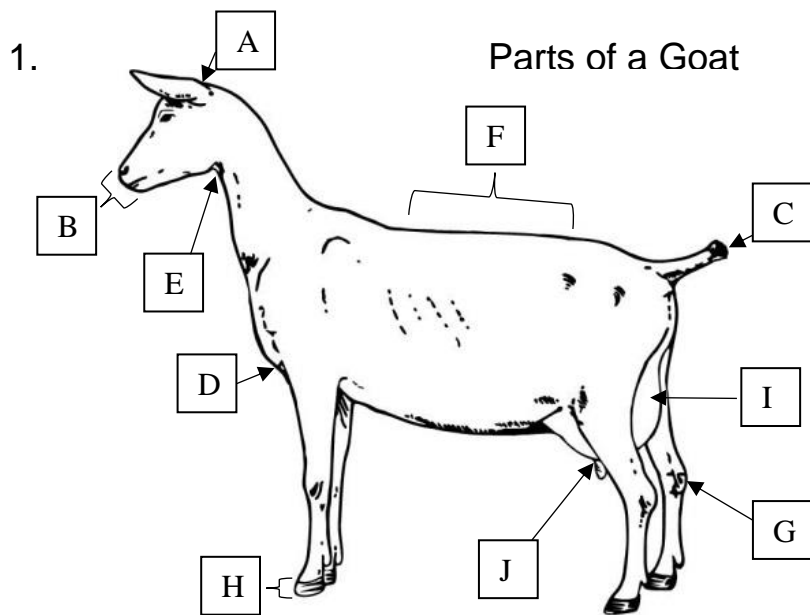
# Wabash County 4-H Goat Worksheet



## Grade 3

Name: \_\_\_\_\_ 4-H Club \_\_\_\_\_

Answers to these questions can be found in the "Goat Resource Handbook" 4-H 135R



- A. \_\_\_\_\_
- B. \_\_\_\_\_
- C. \_\_\_\_\_
- D. \_\_\_\_\_
- E. \_\_\_\_\_
- F. \_\_\_\_\_
- G. \_\_\_\_\_
- H. \_\_\_\_\_
- I. \_\_\_\_\_
- J. \_\_\_\_\_

Label the parts from the words listed below.

- |      |      |        |         |                |
|------|------|--------|---------|----------------|
| Hoof | Hock | Poll   | Muzzle  | Rear Udder     |
| Tail | Back | Throat | Brisket | Floor of Udder |

2. Look through Chapter 2 to find the four categories which goat breeds are divided into:

\_\_\_\_\_

3. In chapter 5, the book shows pictures of different feedstuffs that are common for goats to eat. Look at the feed you give to your animal(s), which picture looks the most like your feed?

\_\_\_\_\_

Look a few pages back at the chart and give the color and texture of what you feed your goat.

Color: \_\_\_\_\_

Texture: \_\_\_\_\_

4. In chapter 3, it is smart to be aware of your animal's \_\_\_\_\_ zone and to give your animal time to \_\_\_\_\_ as you enter their zone.

5. Find in chapter 7 we learn that \_\_\_\_\_ is an infection or inflammation of the mammary gland.

The two types of Mastitis are:

\_\_\_\_\_

6. In chapter 9, pygmy goats are originally from \_\_\_\_\_. A good Pygmy “type” is a \_\_\_\_\_, \_\_\_\_\_, and \_\_\_\_\_ goat.

7. Chapter 10, there are two common types of housing used for goats. They are:

\_\_\_\_\_

What type of housing do you have for your goat(s) and what does your goat like most about its home?

\_\_\_\_\_  
\_\_\_\_\_  
\_\_\_\_\_  
\_\_\_\_\_

8. List 3 things that you learned about caring for your goat this year.

\_\_\_\_\_  
\_\_\_\_\_  
\_\_\_\_\_

9. Chapter 13 tells us the person we should call when questions or concerns arise about our animal’s health. They are the \_\_\_\_\_. You should always check with them before giving your animal any \_\_\_\_\_.

10. Look in Chapter 15, if you show dairy goats then you should dress in \_\_\_\_\_ but if not then you can wear \_\_\_\_\_ with a \_\_\_\_\_ or \_\_\_\_\_ shirt. Make sure your shirt is tucked \_\_\_\_\_. Proper shoes do NOT include \_\_\_\_\_ or \_\_\_\_\_.





# Wabash County 4-H Goat Worksheet



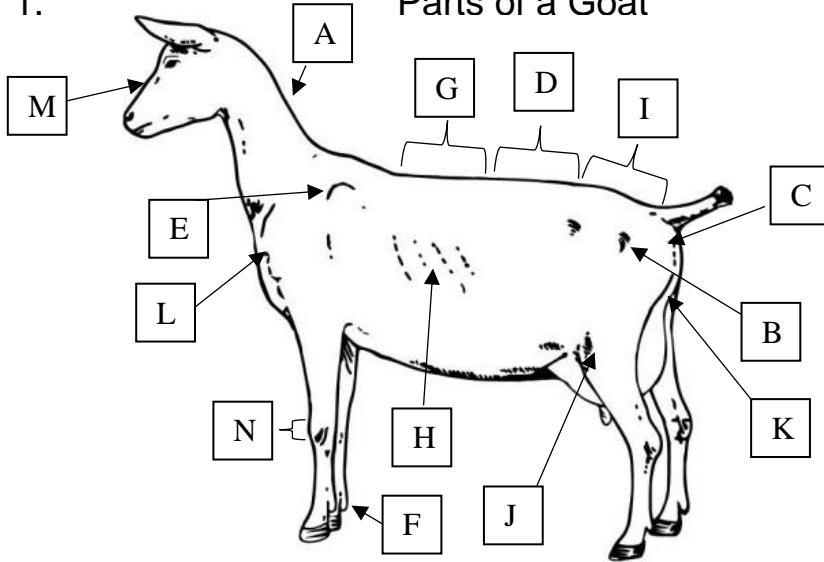
## Grade 4

Name: \_\_\_\_\_ 4-H Club \_\_\_\_\_

Answers to these questions can be found in the "Goat Resource Handbook" 4-H 135R

1.

Parts of a Goat



- A. \_\_\_\_\_
- B. \_\_\_\_\_
- C. \_\_\_\_\_
- D. \_\_\_\_\_
- E. \_\_\_\_\_
- F. \_\_\_\_\_
- G. \_\_\_\_\_
- H. \_\_\_\_\_
- I. \_\_\_\_\_
- J. \_\_\_\_\_
- K. \_\_\_\_\_
- L. \_\_\_\_\_
- M. \_\_\_\_\_

Label the parts from the words listed below.

- |       |        |         |                |                   |
|-------|--------|---------|----------------|-------------------|
| Neck  | Loin   | Dewclaw | Bridge of Nose | Pin Bone          |
| Knee  | Stifle | Rump    | Shoulder Blade | Point of Shoulder |
| Chine | Thurl  | Ribs    | Eschutcheon    |                   |

2. Look in Chapter 15, when you are showing your animal there are certain tips to remember. When in the ring, always keep the goat \_\_\_\_\_ you and the judge. You should lead your animal from the \_\_\_\_\_ side and always switch sides by going \_\_\_\_\_ the animal. You should not \_\_\_\_\_ off the ground when presenting your goat to the judge.

3. In chapter 7, it lists two automated milking systems. They are:

\_\_\_\_\_

Beside automated milking facilities, there are also \_\_\_\_\_ facilities.

4. In Chapter 2, there are two types of Fiber Goats, the \_\_\_\_\_ and the \_\_\_\_\_. The Angora goat grows fleece at a rate of \_\_\_\_\_ inch per month and can produce \_\_\_\_\_ pounds of mohair yearly when cared for properly.

5. Look in Chapter 6 to the discussion of Dehorning. While most goats grow horns, some are naturally hornless or \_\_\_\_\_. It is usually for the goat's \_\_\_\_\_ that they are dehorned so not to injure themselves or others. Plan to dehorn a kid when they are \_\_\_\_\_ old. The easiest and most common method is to use an \_\_\_\_\_.

6. Look in Chapter 8 to find the selection criteria when selecting a meat goat. List the different criteria: \_\_\_\_\_  
\_\_\_\_\_  
\_\_\_\_\_

7. Chapter 9 defines the word mohair as \_\_\_\_\_. Mohair is produced by the \_\_\_\_\_ breed while cashmere is produced by \_\_\_\_\_ to some degree.

8. Look in Chapter 12, having \_\_\_\_\_ are important for increasing profitability of a goat operation, even if you only have a few animals.

What things did you have to buy for your goat(s) for this year?

\_\_\_\_\_  
\_\_\_\_\_  
\_\_\_\_\_

9. What did you learn about your goat this year that you didn't know about before?

\_\_\_\_\_  
\_\_\_\_\_  
\_\_\_\_\_

10. In chapter 13, look at how to properly administer animal drugs. The bottle of medication should indicate one of these methods:

\_\_\_\_\_

List the different types of injectable methods:

\_\_\_\_\_



# Wabash County 4-H Goat Worksheet

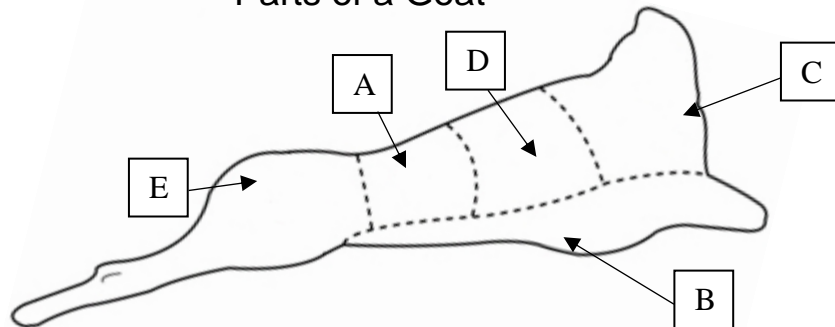


## Grade 5

Name: \_\_\_\_\_ 4-H Club \_\_\_\_\_

Answers to these questions can be found in the "Goat Resource Handbook" 4-H 135R

### 1. Parts of a Goat



- A. \_\_\_\_\_
- B. \_\_\_\_\_
- C. \_\_\_\_\_
- D. \_\_\_\_\_
- E. \_\_\_\_\_

Label the parts from the words listed below.

Shoulder      Loin      Leg      Rack      Fore Shank/Breast

2. Look in Chapter 6, goats' hooves are like your own \_\_\_\_\_ and need to be trimmed \_\_\_\_\_. It is recommended that they are trimmed every \_\_\_\_\_. What are three things that overgrown hooves can cause?

\_\_\_\_\_  
\_\_\_\_\_

3. Chapter 15 says the keys to preparing your animals for showing are \_\_\_\_\_ and \_\_\_\_\_. Clipping your goats should be done \_\_\_\_\_ days prior to the show. When clipping an animal for the first time you should start at the \_\_\_\_\_ because \_\_\_\_\_.

4. Chapter 15 discusses Show Ring Ethics. In what ways can unethical practices impact your animal? \_\_\_\_\_

\_\_\_\_\_  
\_\_\_\_\_

What are three reasons that you have decided to show goats in 4-H?

\_\_\_\_\_  
\_\_\_\_\_  
\_\_\_\_\_

5. Chapter 5 covers Nutrition, listing 6 essential nutrients for goats. They are: \_\_\_\_\_  
\_\_\_\_\_  
\_\_\_\_\_

With a goat's body being composed of \_\_\_\_\_% water, its important to make sure we provide \_\_\_\_\_ water at all times. They may consume up to \_\_\_\_\_ gallons of water a day.

6. In Chapter 9, there are two types of Utility Goats:

\_\_\_\_\_

What are the similarities in choosing goats to be utility goats (what makes them ideal):

\_\_\_\_\_  
\_\_\_\_\_  
\_\_\_\_\_  
\_\_\_\_\_

7. In Chapter 11, the type of bedding you use is important. The most common types are:

\_\_\_\_\_

What type of bedding do you use for your animals and how often do you take care of the manure from your animal(s)? \_\_\_\_\_

\_\_\_\_\_  
\_\_\_\_\_

8. Chapter 5 states that goats have a \_\_\_\_\_ digestive. What are the four componets that a ruminant's digestive system is composed of? \_\_\_\_\_

\_\_\_\_\_

9. Look in Chapter 2 for help. What breed of goat(s) will you bring to the fair? List 2 specific things you know about that breed. \_\_\_\_\_

\_\_\_\_\_  
\_\_\_\_\_  
\_\_\_\_\_  
\_\_\_\_\_



# Wabash County 4-H Goat Worksheet

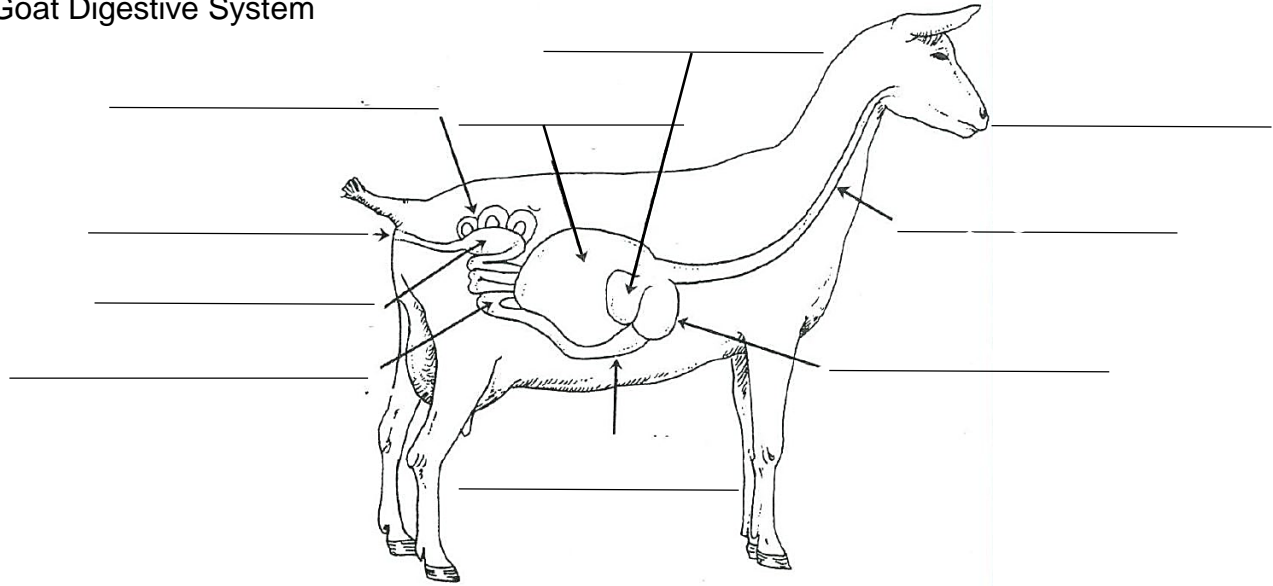


## Grade 6

Name: \_\_\_\_\_ 4-H Club \_\_\_\_\_

Answers to these questions can be found in the "Goat Resource Handbook" 4-H 135R

### 1. Goat Digestive System



Label the parts from the words listed below.

- |       |        |           |                 |                 |
|-------|--------|-----------|-----------------|-----------------|
| Mouth | Omasum | Abomasum  | Esophagus       | Large Intestine |
| Rumen | Cecum  | Reticulum | Small Intestine | Anus            |

2. In Chapter 6, identification is important, whether you have a large operation or just a few animals. There are two broad ways to identify :

\_\_\_\_\_

All goats should be \_\_\_\_\_ whether they are registered or not. The \_\_\_\_\_ breed is instead tattooed on \_\_\_\_\_ because \_\_\_\_\_.

The other permanent identification is \_\_\_\_\_. When doing this, make sure it is placed \_\_\_\_\_ from the base of the ear.

Which method do you use to identify your animal(s)? List what their tattoo or tag number is.

\_\_\_\_\_  
\_\_\_\_\_



3. In Chapter 5, feed tag information is discussed. List out the 9 different types of labeling information that the law requires feed manufacturers to provide on every bag or package of product: \_\_\_\_\_

\_\_\_\_\_

Which of these do YOU think is the most important and why? \_\_\_\_\_

\_\_\_\_\_

4. Look in Chapter 8. What is another name for goat meat? \_\_\_\_\_

Which two ethnic markets are discussed and what people group is associated with them?

\_\_\_\_\_

What is pointed out as something to consider if you were wanting to market chevon?

5. In Chapter 5, feeding systems talk about why grain mixtures should be pelleted or well textured to make sure all fine particles and ingredients are consumed. Why should goat's feed be like this? \_\_\_\_\_

What other method is suggested to help minimize separation of fine particles of textured feed? \_\_\_\_\_

Goats like to climb and it is important to make sure that goat's cannot climb and get their feet in contact with their food. Why? \_\_\_\_\_

6. Raising goats costs money. List the things that you had to purchase, including your animal, this year for your project and how much do you intend to make? \_\_\_\_\_

\_\_\_\_\_



# Wabash County 4-H Goat Worksheet



## Grade 7

Name: \_\_\_\_\_ 4-H Club \_\_\_\_\_

Answers to these questions can be found in the "Goat Resource Handbook" 4-H 135R

1. Say you were evaluating which goat to purchase for showing. Chapter 2 states that no matter what type animal you get (dairy, meat, etc.) \_\_\_\_\_ and \_\_\_\_\_ are very important.

If you are selecting a doe for breeding stock, what are things that you should look for?

---



---

When you look at a goat's rear legs, we know we want them to be ideal. What are all the other things that the rear legs can be if they are not ideal? \_\_\_\_\_

---



---

2. Look in Chapter 12, whether you own a goat farm or just purchase goats to sell at the fair for your project, records and budgets are important. What is the equation for figuring Profit?

---

How will you earn an income from your goat? \_\_\_\_\_

---



---

3. Chapter 13 covers the topic of Quality Assurance. Who is in charge of quality insurance in the livestock industry? \_\_\_\_\_

What is your individual role then in the quality assurance of your animal? \_\_\_\_\_

---



---

4. Look in Chapter 15. Besides being dressed appropriately and being ready yourself, what things do you need to do the day of the show to make sure your animal is ready?

---



---



---

How many days in advance to the show should you bathe your goat? \_\_\_\_\_

Both dairy and meat goats should be clipped prior to the fair. How long before the show should you clip your goat? \_\_\_\_\_

Why should it be done so far in advance? \_\_\_\_\_

5. In Chapter 13 you learn how to read a medication label. What are the withholding/withdrawal times and why is this so important? \_\_\_\_\_

The quantity of contents is usually give in \_\_\_\_\_ units. One cubic centimeter, also known as \_\_\_\_\_ is the same as \_\_\_\_\_ milliliter (mL).

6. Chapter 9 talks about Harness Goats. A harness made of \_\_\_\_\_ is better than one made of rope or string. Which strap is the most important? \_\_\_\_\_

What do that strap do? \_\_\_\_\_

All harness straps should be made \_\_\_\_\_ to allow for \_\_\_\_\_ of the animal and should fit fairly \_\_\_\_\_ to allow \_\_\_\_\_

7. Chapter 6 talks about diseases goats can get. What are the two types of parasites?

\_\_\_\_\_ Give a few examples of each type and tell how to best prevent/destroy the eggs and breeding of parasites. \_\_\_\_\_

8. Chapter 3 gives us some insight into how goats are. The majority of goats a have strong \_\_\_\_\_ instincts. They develop a very distinctive, comfortable \_\_\_\_\_

to their pens, pastures, and/barn lots. We can see that by \_\_\_\_\_

What does knowing this about goats help us to understand what they are experiencing when forcibly moved or changes in environment? \_\_\_\_\_

9. Look in Chapter 3. Define zoonotic diseases and list a few examples: \_\_\_\_\_



# Wabash County 4-H Goat Worksheet

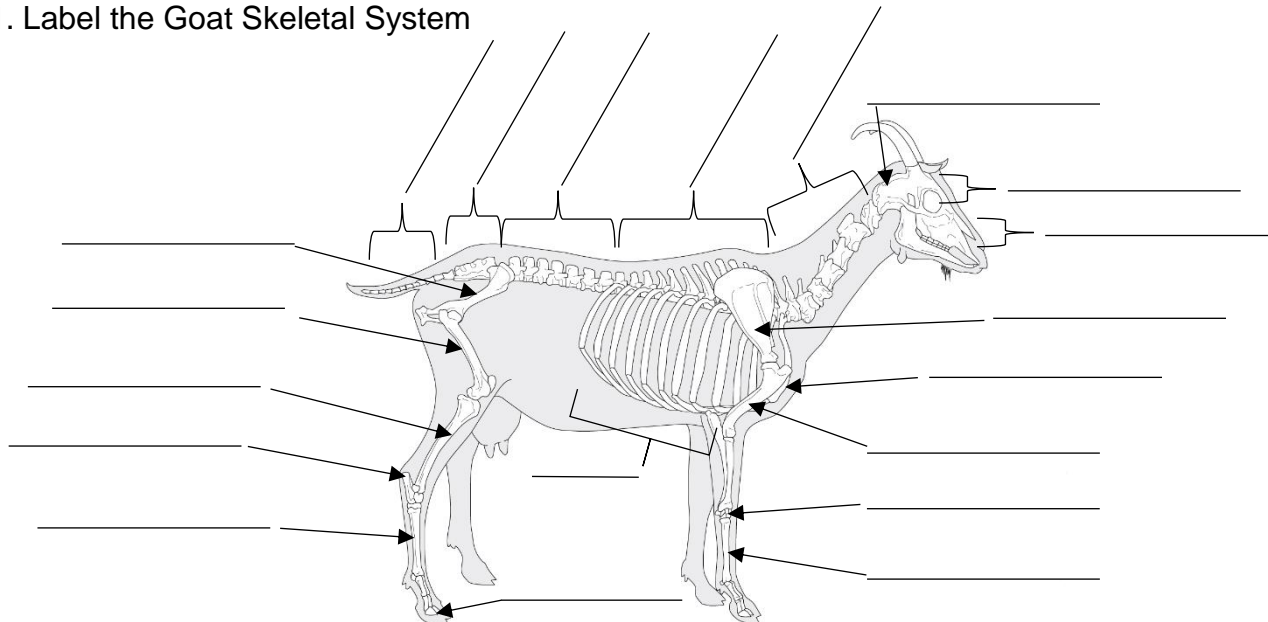


## Grade 8

Name: \_\_\_\_\_ 4-H Club \_\_\_\_\_

Answers to these questions can be found in the "Goat Resource Handbook" 4-H 135R

### 1. Label the Goat Skeletal System



Use the following list of words. Each will be used one time.

Ossa Pelvis, Cervical Vertebrae, Metacarpus, Atlas, Humerus, Tibia, Carpus, Femur, Cranial Bones, Tuber Calcanei, Distal Phalanx, Lumbar Vertebrae, Sacrum, Scapula, Facial Bones, Ribs, Thoracic Vertebrae, Caudal Vertebrae, sternum, and Metatarsus

### 2. Chapter 10 discusses Methods of Housing for your goats, no matter if they are dairy, meat, or fiber operations. There are two common methods of housing, what are they?

\_\_\_\_\_

What are the disadvantages to stall housing? \_\_\_\_\_

What is the difference between the other two listed types of housing? \_\_\_\_\_

\_\_\_\_\_  
\_\_\_\_\_

What type of housing do you use and what do you like about it? \_\_\_\_\_

\_\_\_\_\_  
\_\_\_\_\_

### 3. In Chapter 2, when selecting an animal, after you choose a breed, you need to decide to select

\_\_\_\_\_ or \_\_\_\_\_ animals. Circle which costs more.

4. Look in Chapter 4, Genetics is \_\_\_\_\_

Some genes have the ability to hide or mask the presence of another gene. These are: \_\_\_\_\_ . When you are writing these genes out, use a \_\_\_\_\_ letter. The ones that are covered up are known as: \_\_\_\_\_. These are \_\_\_\_\_ letters when you write them out.

Explain the difference between homozygous and heterozygous. \_\_\_\_\_

5. Look in Chapter 7 at Dairy Goat Products. How is the composition of goat milk different from cows milk? \_\_\_\_\_

Because milk spoils easily, it is highly regulated by the \_\_\_\_\_. On a dairy goat farm, milk is stored in a \_\_\_\_\_ until the tank truck can come pick it up. What determines how often the tank truck comes? \_\_\_\_\_

List 2 things a hauler will test a milk sample for: \_\_\_\_\_

6. In Chapter 5, it discusses feed tag information. What are the 9 topics of labeling information listed on all feed tags? \_\_\_\_\_

7. List some skills you have gained by showing animals in 4-H. \_\_\_\_\_

8. Look in Chapter 15 on Show Ring Ethics. List the six pillars of character. Then choose one pillar and describe how you will practice that pillar. \_\_\_\_\_



# Wabash County 4-H Goat Worksheet

## Grade 9



Name: \_\_\_\_\_ 4-H Club \_\_\_\_\_

**Answers to these questions can be found in the “Goat Resource Handbook” 4-H 135R**

1. Use Chapter 13 to answer the following questions: Today is June 15. You have a meat goat named “Clover” that weighs 95 pounds, ID 92123. The vet has looked at him and determined that he has worms. Use the medication Insert on page 170 to complete the chart below.

Treatment Date & Time	Animal ID Species Description	Condition Being Treated	Estimated Weight	Treatment Given (Medicine)	Print Name of Person Who Gave Treatment	Instructed Withdrawal	Results Comments	Date & Time Withdrawal Complete	Vet Name address Phone

2. Review the information above. Is it acceptable to show your goat at the county 4-H fair? Explain.

---



---

3. It is difficult for some to understand why it is necessary for 4-H members to know and abide by withdrawal times when they “just want to show at the 4-H fair.” Why do you think it is important for 4-H members to understand and follow withdrawal time? Be sure to consider whether or not 4-H goats have an impact on the goat market.

---



---



---

4. Think of a health concern that you have had with one of your goat either this year or in the past. How did you make sure that you care for your animal in a way that was safe and by disease maintenance standards?

---



---



---

Use Chapter 6 to answer the following questions:

5. Explain the two methods you can use to determine if a kid is horned or polled?

---

---

---

---

6. What are the two main methods used for dehorning a goat?

a. \_\_\_\_\_ b. \_\_\_\_\_

7. What are the accepted methods of permanent identification?

a. \_\_\_\_\_ b. \_\_\_\_\_

8. Where in the ear should an ear tag be placed and why?

---

---

Use "Show Ring Ethics" on page 177 of your manual to answer the following questions:

List some benefits you have gained from your past show ring experiences.

---

---

---

---

Describe what you feel is appropriate behavior when you win.

---

---

---

---

What behavior is appropriate when you don't place where you had hoped?

---

---

---

---



# Wabash County 4-H Goat Worksheet



## Grade 10

Name: \_\_\_\_\_ 4-H Club \_\_\_\_\_

Answers to these questions can be found in the "Goat Resource Handbook" 4-H 135R

Use Chapter 4 to answer the following questions:

1. Complete the Punnett Square to determine polled or horned where the buck has a genotype PP and the doe is Pp.


2. Based on the Punnett Square above answer the following questions:
  - a. What percentage of the offspring are likely to be horned? \_\_\_\_\_
  - b. What percentage of the offspring are likely to be polled? \_\_\_\_\_

3. Explain why more goats are born with horns when polled is the dominant trait.
 

---



---



---

4. Explain how genetic principles apply to you and selection of your 4-H goats.
 

---



---



---

5. What are two causes of poor fertility in goats?
 

---



---



---

6. Goats are generally "seasonal breeders". What does this mean?
 

---



---



---



Use Chapter 14 "Careers in Animal Science" to help you with the following questions.

7. 4-H livestock projects teach about animal science. Identify some skills or knowledge you have gained in the 4-H goat project that could relate to a career in the field of animal science.

---

---

---

---

8. Identify some animal science careers that are directly related to skills learned in the goat project.

---

---

---

9. Based upon reading and personal experience, what are some ways Agribusiness plays a role in the 4-H program?

---

---

---

Use the Show Ring Ethics information on page 177 of your manual to answer the following questions:

10. Could you be a "winner" showing an animal without getting a champion ribbon? Explain.

---

---

---

---

11. What are some methods that Wabash County could implement to start recognizing exhibitors for skills gained through livestock projects/shows? This would be in addition to awards and recognition received in the show ring.

---

---

---

---



# Wabash County 4-H Goat Worksheet: Grade 11



Name: \_\_\_\_\_

4-H Club: \_\_\_\_\_

**Use the  
"Goat  
Resource  
Handbook"  
4-H 135 R for  
assistance  
with  
completing  
this  
worksheet.**

This year, you will track your expenses and complete the following chart to help you learn about the costs associated with keeping livestock. You may choose to monitor expenses for 1 particular animal or total expenses if fed by group. Please keep detailed records.

Date	From whom purchased	Description of item	Quantity	Total Expenses-- Value or Amount Paid \$	Animals <sup>1</sup> \$	Feed <sup>1</sup> \$	Breeding fees, implants, vet & medical fees \$	Manure disposal bedding & trucking	Fencing, buildings, machinery & supplies <sup>2</sup> \$	Interest, insurance, depreciation & taxes \$
<i>Jan. 2</i>	<i>Father - home grown</i>	<i>shelled corn</i>	<i>10 bushels</i>	<i>40.00</i>		<i>40.00</i>				
Totals										
Average expense per animal										

Cost or value--home raised or purchased.  
The cost of these items should be spread over their years of usable life. For example, the usable life of a \$500 fence may be 20 years. Therefore, \$500 divided by 20 years equals \$25 per year.

### RECEIPTS

Date	To Whom Sold	Item Sold	Quantity	Total Receipts-- Value or Amount Received \$	Animals <sup>1</sup> \$	Breeding Fees \$	Milk, Wool \$	Manure	Miscel- laneous \$
Total									
Average receipts per animal									

<sup>1</sup>If an animal is not yet sold or it is to be kept, give estimated final value.

### Record Summary

	No. 1	No. 2	No. 3	No. 4	No. 5	No. 6	Total
a. Total expenses (page 2)							
b. Total receipts (page 3)							
c. Profit or loss (b - a)							

d. Hours of Labor for actual production \_\_\_\_\_ e. Hours of labor for show preparation \_\_\_\_\_ f. Profit or loss per productions hours \_\_\_\_\_

What are your annual costs of keeping each animal?

---



---

How could you lower your annual costs?

---



---



---



---



# Wabash County 4-H Goat Worksheet

## Grade 12



Name: \_\_\_\_\_ 4-H Club: \_\_\_\_\_

**The questions on this year's worksheet are to encourage you to set goals and reflect upon what you learned during your 4-H tenure. As you answer the questions, think about what you learned in 4-H and what you would like to get out of your final year in the goat project. Your worksheet grade will be based upon how completely and thoughtfully you answer each question.**

1. When you turn in this worksheet, include a picture of yourself with your favorite goat.
2. What are your goals for the goat project this year?

---

---

---

3. What steps will you take to meet your goals?

---

---

---

4. In what ways have you mentored younger 4-H members in the goat project?

---

---

---

5. How has your experience in the goat project help you to become a better leader and/or citizen?

---

---

---

6. Describe some skills you have learned through participation in the 4-H goat project.

---

---

---

---

---

---

7. Tell about any 4-H volunteers, leaders, or other 4-H member who have helped and/or positively impacted your 4-H experience. How were they influential to you?

---

---

---

---

---

---

---

---

---

---

---

---

---

---

---

---

---

---

---

---

---

---

---

---

8. One goal of Indiana 4-H is to develop leadership skills in the members. Identify some ways that Wabash County 4-H could better develop the leadership skills in older 4-H members in the goat project. In addition, what ideas do you have for giving older 4-H members more roles in leadership capacities within the county 4-H program and goat project?

---

---

---

---

---

---

---

---

---

---

---

---

---

---

---

---

---

---

---

---

---

---

---

---

---

---