



SC4-H News

December / January 2024

From the Educator-

Hi everyone! Hope you are all doing well. Please be sure to check out this newsletter for important updates and plans for upcoming programs and events. If you still need to enroll in 4-H, please hop online to v2.4honline.com. This is our new system and it has streamlined your enrollment process so it's all on one easy - to-navigate page. If you have any questions, please let us know!



The 2023 - 2024 handbooks should be in our office tentatively for sometime in February. We will also add the electronic file to our website when it's finalized. The theme this year is, "**Different Segments, Different Colors**" The Junior Leaders did a great job coming up with several options for the upcoming year. So way to go Junior Leaders for selecting such a neat theme for this next year!

I would like to extend a huge thank you to our 4-H Advisory Council for putting on a GREAT 4-H Open House! During this event, there were 86 total members that signed in, 36/86 were new, and 9 brand new members signed up for 4-H that evening!

Friendly reminder on the new fair dates: June 10-June 15, 2024



With the holidays coming up, the Shelby County Purdue Extension Office will be closed on the following days:

Christmas—December 22-25, 2023. Will return on December 26, 2023.

New Year's Holiday—December 29, 2023-January 1, 2024. Will return on January 2, 2024.

MLK Day—January 15, 2024. Will return on January 16, 2024.

I hope everyone enjoys their time over the holidays spent with family and friends.

Happy Holidays!
~Bailey

happy holidays!



SC4-H News

News You Need to Know:

All 4-H Families-

- **Enrollment for Shelby County 4-H is open at <https://v2.4honline.com>.** Please remember that your enrollment is **NOT** complete until you have paid the program fee. Payments made online by credit card can be activated by our office. The procedure for check or cash payments is much different. Your enrollment can not be made active until the payment is first received and processed in our office. We will then notify the state 4-H office that payment has been received. Only then will the state office activate your enrollment. This procedure may take several days or, as we get closer to the January 15 target enrollment date, a couple of weeks. **If you choose to pay by cash or check, it is strongly suggested that you bring or mail your payment to our office as soon as you have finished with the online enrollment.** Checks must be made payable to Purdue CES.
- **Both Mini (K-2nd grade) and regular 4-H members (3-12) must re-enroll each year.**
- **The Drop/Add date** for all projects is May 15.
- **Be sure to check exhibit requirements for your 2024 projects!** A few changes have occurred, including new manuals and exhibit requirements in some projects, so look before you start!
- **Do you have an interest in 4-H Shooting Sports?** An Orientation meeting will be held on Tuesday December 5, 2023 at 7p.m. in the Brinson Building at the Shelby County Fairgrounds. This is an informational meeting for anyone interested in the Shooting Sports program.
- **Are you in your last 2 years of 4-H eligibility?** If so, you are invited to join the Legacy Group, an elite philanthropic group of Shelby County 4-H members dedicated to improving their community. Please be on the look out for a letter with more information, coming in January.
- **Attention Grades 10-12:** It is time to think about scholarships and we have help for you! On January 17, 2024 at 5:30 p.m. at the Shelby County Purdue Extension Office (20 W Polk St, Suite 201) we will be having a workshop for you to gain tips and tricks on how to complete your 4-H scholarships. If you cannot attend and want more information, please call the office. You will gain tips on how to write those "WOW" statements to make your application stand out! Watch your email for more information. State 4-H Applications are due by January 25th on your 4Honline profiles. E-mail Natalie at russe238@purdue.edu to sign up for this workshop!



News You Might Like to Know-

- **College bound members, be sure to check out the Shelby County Ag Promotion Scholarship.** You must complete the form and essay and return it by February 15th.
- **Workshops, trips, 4-H Band, 4-H Chorus information and more is available at <https://extension.purdue.edu/4-H/>**
- **Stay connected** with us by "Liking" us on Facebook at Shelby County, IN 4-H.





SC4-H News

4-H Livestock/Animal Exhibitors-

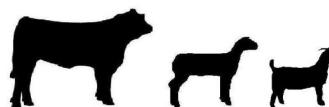
- **Beef ID and Weigh In Day** will be on **Saturday, March 9 from 8-10 a.m.** If you are showing cattle, make plans to have your animals at the fairgrounds. The snow make up date is March 30 from 8-10 a.m.
- **ID Day for Sheep, Goats and Feeder Calves** will be **May 4 from 8-10 a.m.**, at the livestock barns.
- **All steers, commercial heifers and registered heifers and Dairy MUST have RFID tags by May 15 to exhibit at the Shelby County Fair.**
- **Animal enrollments, livestock auction forms, pen reservation forms, lease forms, etc. are all due by May 15!**
- **Indiana 4-H Quality Livestock Care (IQLC) and YQCA certificates are due to the Shelby County Extension Office by May 21!**
- **A Couple of VERY Important Animal Notes:**

1. Most 4-H animals must be "ENROLLED" in 4-H, just as our human members are. Beef Cattle, Dairy Cattle, Goats, Horses, Llamas, Sheep and Swine must all be enrolled through the <https://v2.4honline.com> website by May 15. This enrollment allows the animal to be identified as an official 4-H animal that can exhibit at our county show, 4-H fun shows, area shows and the Indiana State Fair. Animal enrollment is done through the same log in you used to enroll yourself in 4-H.
2. From May 1 to May 21, you will "ENTER" your animal in classes for the Shelby County Fair by going to <https://faireentry.com> and selecting your animal from the enrollment you created earlier for it in <https://v2.4honline.com>. You will then enter it in the appropriate classes.
3. May 21, 2023 is the LAST DAY to complete Fair Entry and have your Indiana 4-H Quality Livestock Care (IQLC)/YQCA training completed and turned into the office. Failure to complete Fair Entry and IQLC/YQCA will result in 4-Her's not being able to fully participate in placing in their livestock shows/project judging.
4. Cats, Dogs, Poultry, and Rabbits, due to limited ID requirements, will be enrolled as 4-H animals when they sign up for their county fair classes through Fair Entry.



I know this sounds a bit confusing. Just think of it this way: Both you and your animal(s) will **enroll in 4-H through <https://v2.4honline.com>. You will then **enter** that animal in **classes** for the fair using the <https://faireentry.com>. The only paperwork you need to turn in is your paid auction form, lease forms if applicable, YQCA / IQLC certificate, and a pen reservation form (if appropriate to your species). Small animals will simply use the FairEntry website to identify their animals and enter the fair classes. Questions? Call us at the extension office and we will be glad to help!*

5. Cats, Dogs, and Horses must have 2024 vaccination forms completed before attending any 4-H events, including practices and workshops. Forms are now available at the Shelby County Extension Office or on our website.





SC4-H News

4-H Junior Leaders

The Shelby County 4-H Junior Leader Officers for 2023/24 are as follows:

- **President:** Abby Bridges
- **Vice President:** Jackson Bentz
- **Treasurer:** Maryn Sprinkle
- **Secretary:** Isabella Stagnolia
- **Social Media:** Pipar Hodge
- **Recreation:** Brady Miller
- **Advisory Council Representatives:** Abby Bridges, Hannah Bridges, Isabella Stagnolia, Maryn Sprinkle

JUNIOR LEADER HOLIDAY PARTY

December 15, 2023 | 6-8 PM | Extension Office

Please RSVP to york40@purdue.edu. Let us know what you will be bringing for the pitch in, if you will be participating in the white elephant gift exchange (\$5 limit), and if you will be bringing a Gingerbread Man/ House to decorate!

Are you interested in joining in on the fun? Let us know! We would love to have you join us!

FIRST MEETING OF 2024: January 17, 2024 @ 6:30 pm
Location: Shelby County Purdue Extension Office



4-H Adult Volunteers-

- **The 2024 4-H Adult Volunteer packets were mailed in middle November.** A big thank you to those of you who have submitted your <https://v2.4honline.com> 2024 enrollment! If you have not completed this, please do so **NOW!** **Your 2024 Adult Volunteer enrollment MUST be completed before you meet with the youth in 2024!!**
- **Each 4-H Adult Volunteer must now complete the "Volunteer Orientation & Youth Protection Policy Training" each year.** It will be done through the v2.4honline.com site as you complete your annual enrollment. Enrollment status will NOT be complete until all training are complete.

*Note- You cannot skip through the slides, you must go through each one as it follows to receive credit. Also, if prompted to select NEXT or CONTINUE at the end of each slide, do so until it takes you back to 4-H Online.

- **Don't forget your Annual 4-H Unit/Club Financial Report is due before February 1, 2024.** This is for your 2023 financial year.





SC4-H News

Mini 4-H-

- **The Mini 4-H Handbooks will be ready after the first of the year!** You will be able to download those from our website or stop by the office for your copy! More details to come!
- **Mini 4-H is for children in Kindergarten, first grade, and second grade.**
- **RT2 next meeting is December 5, 2023 at 5:30pm**, we will be reading The Polar Express, making a jingle bell craft, and enjoying some hot cocoa. Youth in K-3rd are encouraged to attend this FREE event!

MINI 4-H WORKSHOPS

Meetings

Thursday, February 8

Thursday, March 7

Thursday, April 4

All meetings will start at 6:00 pm
 Meeting Location: Shelby County
 Fairgrounds—Family Arts Building
 Price: FREE

Cat Workshop

Wednesday, March 6

Wednesday, May 1

All meetings will start at 6:30 pm
 Workshop Location: Shelby County
 Fairgrounds—Brinson
 Building
 Price: FREE



Mini 4-H Ceramics

Tuesday, March 19

3-5 pm | Extension Office
 Register @ v2.4honline.com under
 the events tab
 Price: \$10-\$15 pending on project
 picked.

PURDUE UNIVERSITY | Extension - Shelby County

Shelby County
Read, Taste, & Touch
presents the reading of
The Kid Who Changed the World
 by Andy Andrews

February 8, 2024
 5:00pm
 Family Arts Building, 500 Frank Street,
 Shelbyville, IN 46176

This program is open to ALL Shelby
 County youth in K-3rd grade!
 Activity & snack provided

PREMIER Companies

INDIANA 4-H FOUNDATION

Purdue University is an equal access/ equal opportunity university.



SC4-H News

Club Update- Sunset Llama 4-H Club has recently taken on new club leaders. Vanessa Benagh, Tatem Hodge, and Ellie Bruce will be leading the club moving forward. A generous member of our community, Lisa Alayza has offered to lease Llamas to our Shelby County 4-H members. If you are interested in this opportunity, please reach out to new Club Leader, Vanessa Benagh. Vanessa can be reached at 317-446-2888.

Leasing Llamas- A generous member of our community, Lisa Alayza has offered to lease Llamas to our Shelby County 4-H members. If you are interested in this opportunity, please reach out to new Club Leader, Vanessa Benagh.



How to find a club/ where to find club information- When completing enrollment with 4-H Online, you will be prompted to select a club. But when selecting a club as a new member or joining another club as a returning member—here are some tips.

- ⇒ Finding a club that fits your family is what's most important. Some things to consider—meeting dates, locations, and times. Choose a club that fits into your schedule.
- ⇒ What's the difference in a '4-H Club' vs ' Special Clubs': A traditional 4-H club will meet at least once a month (typically beginning in January) and have more formal/ business meetings. A Special Club is a 4-H club who still meets at least once a month, but have more workshop based meetings.
- ⇒ Updated Club information details can be found on the Calendar posted on the website.

More information on 4-H Clubs can be found in last year's handbook (2023) on page 43. Our handbook is available for your viewing on our website, scan QR code to access.



If you (Parent/ Guardian) would be interested in assisting your 4-H member's club, please contact the office! Shelby County 4-H is always looking for more volunteers!

Finding a club can be a bit overwhelming as a new family– if you have questions, please reach out the club leader or our office!



SC4-H News

News for the 2024 Program Year!

The Shelby County 4-H theme for 2024:



“Different Segments Different Colors”



(More details listed in the 2023/2024 Handbook)

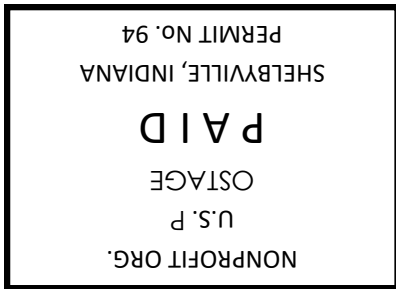
The Following is a Partial List of Changes for 2023/2024:

- ◆ The 2024 Fair Dates are June 10-15, 2024!
- ◆ There will be some changes made to the Horse and Pony classes and schedules!
- ◆ NEW PROJECTS
 - ◆ Wearable Art
 - ◆ Ceramics
 - ◆ Barbeque
 - ◆ Bicycle Rodeo
 - ◆ Bicycle Poster
 - ◆ Weeds

This is not a complete list. Please consult your 2023-2024 Shelby County Handbook for complete exhibit requirements, scheduling and details.

Shelby County 4-H Fun Fact!

Do you know what all the 4-H Advisory Council helps with? They help support our program greatly! Just to name a few items: they help with-providing livestock tags, promotional materials, volunteer appreciation gifts, awards and much more! Please be sure to thank them whenever you see our members! We greatly appreciate all they do! Also be sure to promote and help with any of their fundraisers (spring flowers, poinsettias, shirts, etc.)-the money they raise goes right back to support our 4-H members!



ADDRESS SERVICE REQUESTED

PURDUE UNIVERSITY COOPERATIVE EXTENSION SERVICE
Shelby County
20 W Polk Street, Suite 201
Shelbyville, IN 46176
Cooperating with U.S. Department of Agriculture



Stay up to date!

Website: <https://extension.purdue.edu/county/shelby/index.html>

Facebook: <https://www.facebook.com/shelbyco4h>

Phone: 317-392-6460



This newsletter was mailed on November 30, 2023



2024 Shelby County Fair: June 10th - 15th

It is the policy of the Purdue University Cooperative Extension Service that all persons have equal opportunity and access to its educational programs, services, activities, and facilities without regard to race, religion, color, sex, age, national origin or ancestry, marital status, parental status, sexual orientation, disability or status as a veteran. Purdue University is an Affirmative Action institution. This material may be available in alternative formats.