



January 2022

Happy New Year!!**In this newsletter:****Page 2**

- ANR Calendar

Page 3

- OISC - How To Find My PARP Points
- Grain Entrapment Rescue Training
- Silo the Movie

Page 4

- Is Your Farm Weather Ready
- Farmer Coffee Hour
- Backyard Fruit Production

Page 5

- Advocating for Agriculture

Page 6

- Farm & Family Business Succession
- From Egg to Chickens to Egg
- Award of Honor
- So You've Inherited a Farm, Now What?

Page 7

- Farmers' Achievement Banquet
- Randolph County Purdue Alumni/Enthusiast
- Strategic Marketing for Your Farm
- Midwest Women in Ag Conference

What are you looking forward to this year? I am looking forward to the most exciting year of my extension career thus far. After canceling many things due to COVID we are returning to in person annual events as well as offering some exciting new opportunities!

Each day the sun stays a little longer and soon it will be my favorite time of year SPRING!! Between now and then please join me for any and all programs. Returning this year will be Farmer Coffee Hour, Randolph County Purdue Alumni/Enthusiasts, Farmers' Achievement Banquet, Midwest Women in Ag Conference, Young Ladies in Ag Forum and Randolph County Ag Days.

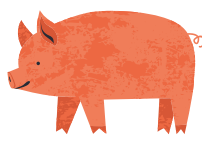
New on the calendar will be: Backyard Fruit; Grain Rescue Training, Silo the Movie; UAV Training; Alternative Gardening Methods; Eggs to Chicken to Eggs; Planting for Pollinators; Grass to Garden - Community Gardening; Cover Crop Research; Weather Ready Farms Pilot.

Finally, the one event that has been over two year in the making: Grain rescue training and the Silo movie. Thanks to several volunteers and many sponsors this event will happen in February.

All of this and that only gets me to April! For more detailed information please look inside this newsletter. These and so many more extension opportunities are available here, around the state and virtually. For the most up to date information check out our Facebook page at Purdue Extension Randolph County, get on our email list or call the office.

My hope for you is that you find an extension program or two or three, to look forward to this year. If you have any program suggestions please let me know.

Have a GREAT 2022!!**Join Us!**



ANR Calendar



January

- 18 6:00 pm Farmers' Achievement Banquet Committee Meeting
- 18 7:00 pm Extension Board Meeting
- 19-20 Indiana Horticulture Conference & Expo. www.indianahortconference.org
- 22 Registration for Farmer Coffee Hour due. Register at: bit.ly/3eScyq0 or aalka@purdue.edu
- 28 Farmers' Achievement Banquet Award of Honor Nominations Due
- 28 Grain Entrapment Rescue Training Event registration due. Register at: <https://bit.ly/3JAgAS2>

February

- 2 Farmer Coffee Hour 8:00 am Breakfast Speaker Michael Langemeier - Ag Outlook @ 8:30
RSVP by January 26th. 765-584-2271 or aalka@purdue.edu
- 2 Randolph County Purdue Alumni / Enthusiast Meeting 6:00 pm
- 8-10 Mid-West Women in Ag Conference Shipshewana, Blue Gate Inn.
- 15 Registration due for: From Egg to Chickens to Eggs. Register at: bit.ly/32YtM29 or call 765-584-2271
- 16 Backyard Fruit Grower Session 1: It All Begins with You 6:30 - 8:30 pm
- 20-26 Grain Bin Safety Week
- 23 Backyard Fruit Grower Session 2: Small Fruit is BIG in the Landscape 6:30 - 8:30 pm
- 26 Grain bin safety training and Silo the Movie - Registration required for each session.
 - 9:00 am to Noon Grain Entrapment Training at Winchester Fire Department Training Center
 - Noon - 1:00 Lunch at Towne Square Community Center
 - 1:00 - 3:00 pm Silo the Movie at Towne Square Cinema
 - 6:00 - 8:00 pm Silo the Movie in Husted Hall at the Randolph County Fairgrounds
- 28 6:30 Farmers' Achievement Banquet Husted Hall Randolph County Fairgrounds

March

- 2 Backyard Fruit Grower Session 3: Small Fruits - What to be Watching For 6:30 - 8:30 pm
- 9 Backyard Fruit Grower Session 4: Tree Fruit - Branching Out 6:30 - 8:30 pm
- 15 6:30 - 7:30 From Egg to Chickens to Eggs - Chick Embryology
- 16 Backyard Fruit Grower Session 5: Tree Fruits - What to be Watching For 6:30 - 8:30 pm
- 23 Alternative Garden Methods Session 1: I Have Worms and You Should Too!! 6:30 - 8:30
- 29 6:30 - 7:30 From Egg to Chickens to Eggs - Backyard Chickens
- 30 Alternative Garden Methods Session 2: Outdoor Composting Methods and Uses 6:30 - 7:30

April

- 6-7 Randolph County Ag Days
- 6 6:30 pm From Egg to Chickens to Eggs - Chicken Hatching
- April 11 - 13 From Egg to Chickens to Eggs - Pick up your chicks.
- 13 Alternative Garden Methods Session 3: Alternative Fertilizers
- 20 Alternative Garden Methods Session 4: Alternative Weed Control
- 27 Alternative Garden Methods Session 5: Alternative Pest Control

May

- 4 Planting for Pollinators 6:30 - 7:30 pm.
- 11 6-9 pm Grass to Garden Session 1: Pre-Garden Planning
- 18 6-9 pm Grass to Garden Session 2: Garden Policies and Community Engagement
- 25 6-9 pm Grass to Garden Session 3: Site Selection and Preparation

June

- 1 6-9 pm Grass to Garden Session 4: Growing and Harvesting

July

- 15-21 Randolph County 4-H Fair

August

- 23 DPAC Field Day





Office of Indiana
State Chemist

All of the following information may be found at www.oisc.purdue.edu

How many PARP points do I have?

- 1st go to: oisc.purdue.edu
- 2nd Click on: My Records - gold bar across the top
- 3rd Click on: Applicator Login - down the left side at bottom.
- 4th You will be prompted to enter your first & last name and the last four digits of your social security number.
- You will be taken to a page with all of your information concerning your license.
- A reminder that every five years you need to earn three points. Once you have your three credits and prior to your license expiring you must reapply by sending in the appropriate form and \$20 to activate your license.

Grain Entrapment Rescue Training Event Saturday, February 26, 2022 All First Responders and Farmers Invited

Grain Rescue Training 9:00 - Noon Winchester Fire Department Training Center

Lunch Noon - 1:00 pm Towne Square Community Center

Silo the Movie 1:00 - 3:00 pm Towne Square Cinema

Silo the Movie 6:00 - 8:00 pm Husted Hall Randolph County Fairgrounds



Registration due by: January 28, 2022

Register at: <https://bit.ly/3JAgAS2>



Questions contact: Amy Alka aalka@purdue.edu or 765-584-2271

Thank you to our sponsors:

Buckeye Mutual Insurance

Chicago Pizza

Farm Bureau Inc.

Farm Bureau Insurance

Matchett & Ward Insurance

Purdue Extension - Randolph County

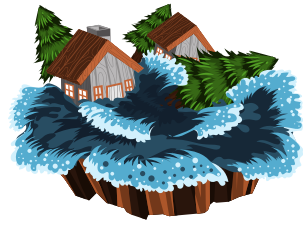
Randolph County United





Is Your Farm Weather Ready?

Would you like to know if your farm is weather ready?



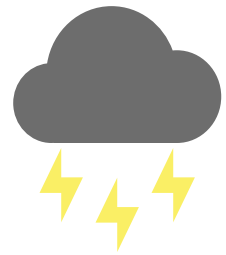
Purdue Extension is partnering with Nebraska Extension to pilot this program with local farmers.

The Nebraska Extension Weather Ready Farms (WRF) program team created a self-assessment checklist to provide producers with cropping system-related recommendations for practices that reduce the risk of losses on farms from weather events. We are looking for producers to complete the self-assessment checklist as part of the pilot test for our program.

This initial self-assessment is designed to provide producers a snapshot in time of current practices or plans in place, in order to gauge the "weather-readiness" of their farms. There are three phases or levels to the self-assessment checklist. The phases encourage participation at each level and allow for continuous improvement on the farm; however, the management and difficulty of practices and planning increase exponentially with each phase.

The mission of our Weather Ready Farms program is to provide certifications to farms who are at lower risk to losses from extreme weather. We are working to align our program with other government and non-governmental agencies to reduce the duplication of reporting activities like farm management practices and to reward or recognize farms who are at a lower risk to losses.

If you are interested in how to participate in the pilot program please call the office 765-584-2271 or email aalka@purdue.edu by February 4, 2022



Extension - Randolph County

Farmer Coffee Hour Ag Outlook

Wednesday, February 2, 2022

Breakfast 8:00 am Speaker 8:30 am

Speaker: Michael Langemeier

Associate Director, Center for Commercial Agriculture at Purdue University

Location: Husted Hall located in the Best Way Center at the Randolph County Fairgrounds. 1885 S. US Hwy 27 Winchester Indiana 47394

Register by January 28, 2022

Register at: <https://bit.ly/3eScyq0>

By calling 765-584-2271 or email aalka@purdue.edu

Breakfast from Northblock Coffee Company - Winchester
Coffee, cinnamon rolls & French toast bake

Thank you to our sponsors
Chris Peacock 765-546-0592
Lauren Peacock 765-546-7359

Area Representatives
Halderman Real Estate & Farm Management



Extension - Randolph County

Backyard Fruit Production

February 16, 23 & March 2, 9, & 16 6:30-8:30 pm

Location: Purdue Extension Randolph County Fairgrounds
1885 US Hwy 27 Winchester, IN 47394

Register for this state wide program at: <https://cvent.me/3PYyXI>

Registration fee: \$40 per person for all sessions.

No fee for second person from same home.

For more information about program sessions call Amy Alka at 765-584-2271 or email aalka@purdue.edu

Session 1 - February 16 It All Begins with You
Session 2 - February 23 Small Fruit is BIG in the Landscape
Session 3 - March 2 Small Fruits - What to be Watching For
Session 4 - March 9 Tree Fruit - Branching Out
Session 5 - March 16 Tree Fruits- What to be Watching For



Extension - Randolph County

Trivia Question #1 asparagus & rhubarb

PAGE 04

ADVOCATING FOR AGRICULTURE

Ethanol

This past weekend when watching sports on TV there was a commercial about ethanol in our gasoline. I wondered why has promoting ethanol taken so long? Maybe the answer is because people are unaware about ethanol facts. Let's take a look at ethanol from two reliable sources, the US Department of Energy and Penn State.

Ethanol is a renewable fuel made from various plant materials. Here in Randolph County ethanol is made from corn. Most of our US gasoline contains ethanol. Typically, our gasoline is 10% ethanol and 90% gasoline, also known as E10. E15 contains 10.5% to 15% ethanol and is labeled E85 also known as flex fuel. Fun fact: Indy 500 cars are often fueled with E98 because of its high octane.

Ethanol facts - sourced from the US Department of Energy

- High octane which, long story short, improves engine efficiency.
- Ethanol is biodegradable, nontoxic and dissolves in water. This is important because ethanol is much safer for the water supply should a spill occur.
- Emissions from ethanol contain less carbon dioxide and carbon monoxide than emissions of 100% gasoline.
- Ethanol production creates jobs in rural areas.
- Ethanol production also increases the basis price of corn in areas where ethanol plants are located.
- The carbon dioxide released when ethanol is burned is offset by the carbon dioxide captured when plants grow which include the crops grown to make ethanol. (Think back to your high school days. Do you remember the equation for photosynthesis? $6\text{CO}_2 + 6\text{H}_2\text{O} = \text{C}_6\text{H}_{12}\text{O}_6 + 6\text{O}_2$). Carbon dioxide; CO_2 ; is essential to produce plants and oxygen.
- When petroleum products are burned the emissions are NOT offset.
- Greenhouse gas emissions are reduced by 40% with corn based ethanol.
- Low-level ethanol blends of E10 or less require not special fueling equipment and can be used in conventional gasoline engines.
- Ethanol is a renewable energy.
- The use of ethanol strengthens national security.
- Reduces demand on foreign oil.

Lots of positive information from the US Department of Energy. Let's take a look at a different reliable source. Additional facts from Penn State Extension.

- Ethanol is a single molecule, $\text{C}_2\text{H}_6\text{O}$ vs gasoline which is a mix of hydrocarbons. Because of the different compositions gasoline and ethanol do not perform the same.
- Problems with ethanol:
 - Due to having oxygen molecules, ethanol contains about 30% less energy than gasoline. When blended at low levels like we have in the US we will not see a large difference.
 - Ethanol is water soluble and can pick up contaminants that gasoline does not.
 - In older machinery ethanol may degrade components such as seals and hoses.
 - One complaint is that ethanol burns hotter and may damage engines.
 - Ethanol creates less energy per unit volume than gasoline and the flame temperature is 104 degrees Fahrenheit cooler than gasoline.
 - Older & small engines are not equipped to adjust the air/fuel ratio therefore, resulting in a "leaner" burn that may increase engine temperature and reduce engine power.

You be the judge. Some advice that I received in my early years as an educator has stuck with me. They said, "If I tell you only one side of the story then you have been indoctrinated. If I share both sides and let you choose then you have been educated." The above information is just a drop in the bucket of information available. While researching additional information, many websites in my Google search were from unreliable sources. Typically .edu and .gov websites are considered credible. Generally .org and .com sites can be created by anyone. Also, check to see who owns the domain name. Is the IP address in the U.S or abroad? Always check the source. Check what may appear as "facts" with or reliable sources. I encourage you to be educated not indoctrinated.

The Succession Planning Team

2022 WINTER WORKSHOP

Farm and Family Business Succession

Strategies to Stay on Track

FEBRUARY 15, 22 & MARCH 1, 2022
12:00 - 1:30 PM ET

Registration link:

<https://cvent.me/xwg8qr>

Program Fee: \$30.00 per family



So You've Inherited a Farm, Now What?

This 2 session workshop will explore the following topics:

- Keep or sell the property, options and financial implications
- If keeping the land, how to manage
- Legal considerations
- If leasing, appropriate lease considerations
- Strategies for dealing with family and communication issues

Join us virtually

January 20 & 27, 2022

6:30-8:30 p.m. EST

Register by January 18

<https://cvent.me/a8NVYZ>

\$25/Person/Household/Farm

Program presented by the Purdue Extension Land Lease Team

For more information or reasonable accommodation to participate, contact Kelly Heckaman at 574-372-2340 or kheckaman@purdue.edu prior to the program.

Lindsay B. Schmitt, Attorney at Law, Evansville Farmer Scott Ozete Robinson & Schmitt LLP
Lindsay will join us to discuss the legal aspects & decisions to successfully inherit a farm for your family.



Purdue University is an equal opportunity/equal access affirmative action institution
Program adapted from Nebraska Extension

Session 1 – February 15, 2022

"Barriers to Succession Planning" with Educator, Jenna Ness
"Building Your Advisory Team" with Educator, Kyle Weaver
"First Steps" with Specialist, Renee Wiatt and Educator, Krista Pullen

Session 2 – February 22, 2022

"Insurance for the Successor Retirement Planning for Families" with Educator, Courtney Schmidt
"Retirement Planning for Families" with Ken Roney JD, CPA, CLU
Indiana Farm Bureau Insurance

Session 3 – March 1, 2022

"Operating and Buy-Sell Agreements" with Educator, Ed Farris
"Structuring Your Farm Succession Plan: Will inheritance taxes be an issue?" with Attorney, Dan Siewers, Hart Bell, LLC

An equal access/equal opportunity institution.

From Egg to Chickens to Eggs

Embryology & Backyard Chickens

Adults & Youth Sessions

March 15 6:30-7:30 - Basics of Embryology

March 29 6:30 - 7:30 - Backyard Chickens

April 6 6:30 - Chicken hatching

Week of April 11 - Pick up your chicks

Please sign up by: February 15, 2022

Register at: bit.ly/32YtM29 or call the office 765-584-2271

Cost: Adults \$20

Youth \$20 includes 4-H enrollment fees

Randolph County Farmers' Achievement Banquet Award of Honor

Due to Extension Office

January 28, 2022

This award is presented to an outstanding leader in our community. These honorees are nominated by their colleagues & peers. If your group or organization would like to nominate some one please submit the following information.

- Name of nominee
- Number of years of service to the organization(s)
- Leadership responsibilities/activities
- Community involvement
- Narrative of why this person deserves the award
- Other information that pertains to nominee
- Place Award of Honor, who is making the nomination & contact person.

The 99th Annual Farmers' Achievement Banquet

Monday February 28, 2022 6:30 pm
in Husted Hall at the Randolph County
Fairgrounds

Tickets on Sale NOW!
\$10.00 Meal Catered by:
Randolph County Pork Producers

Stop by the Randolph County Extension Office
to purchase your tickets or contact any
committee member!

RANDOLPH COUNTY PURDUE ALUMNI/ENTHUSIAST MEETING & WATCH PARTY

Wednesday, February 2, 2022
Husted Hall at Randolph County Fairgrounds

Meat & Drinks Provided
Bring a dish to share.

Meeting and Food at 6:00 pm
Purdue Men's Basketball vs Minnesota
Watch Party at 7:00

To register email
aaka@purdue.edu or call
the office 765-584-2271

STRATEGIC MARKETING FOR YOUR FARM'S FUTURE

February 3 - March 3, 2022



Classes begin February 3, 2022 and run each
Thursday from 7:00-8:00 pm EST through
March 3rd.

Cost: \$30

Register by February 1st:
<https://cvent.me/dK00gR>

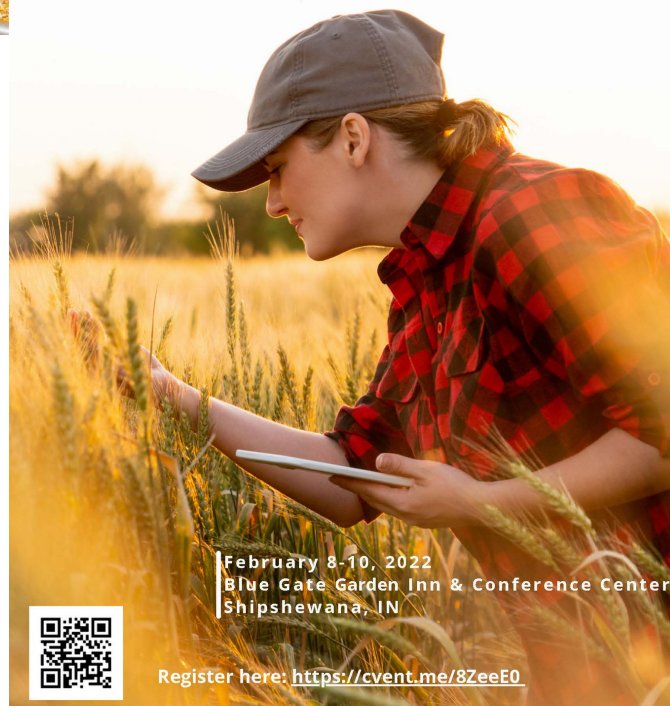
Session Topics include:

- Crop marketing strategies
- Tools available to assist with marketing
- Technical analysis of grain markets
- Diversification into niche markets
- How to communicate decisions
- Tools to address stress associated with marketing highs and lows

Questions or concerns? Contact Jenna Nees at
smith535@purdue.edu or 765-653-8411.



MIDWEST
WOMEN IN AGRICULTURE CONFERENCE
STRONGER TOGETHER



February 8-10, 2022
Blue Gate Garden Inn & Conference Center
Shipshewana, IN



Register here: <https://cvent.me/8ZeeE0>

 **PURDUE**
UNIVERSITY Extension
Midwest Women in Agriculture



TRIVIA

Trivia Questions Answers inside

1. Name the only 2 perennial vegetables.
2. Name the only fruit/vegetable that is never sold frozen, canned, processed, cooked or in any form except fresh.
3. Name Indiana's indigenous tropical fruit.
4. Who is the leading consumer of Indiana grain?
5. What are the two most popular spices in the world?

Purdue Extension—Randolph County Office Staff

Julie Wilson
Extension Educator
CED/4-H Youth
jelsbury@purdue.edu

Amy Alka
Extension Educator
ANR
aalka@purdue.edu

Zoë Robinson
Extension Educator
HHS
robin389@purdue.edu

Casey Seliga
Nutrition Education Program
cseliga@purdue.edu

Sue Thornburg
Office Manager
lthornbu@purdue.edu

Office Phone: 765-584-2271 or 765-584-8005

Office Hours: Monday—Friday, 8 AM—4 PM

www.extension.purdue.edu/randolph



Extension - Randolph County

It is the policy of the Purdue University Cooperative Extension Service that all persons have equal opportunity and access to its educational programs, services, activities, and facilities without regard to race, religion, color, sex, age, national origin or ancestry, marital status, parental status, sexual orientation, disability or status as a veteran. Purdue University is an Affirmative Action institution. This material may be available in alternative formats.