

# Mini 4-H Handbook

## Project & Livestock

### Manual



This manual belongs to:

---

Information, Manuals, & Record Sheets also available online at  
[www.extension.purdue.edu/pulaski](http://www.extension.purdue.edu/pulaski)



Extension - Pulaski County

## Table of Contents

Extension Office .....	1
Mini 4-H Leaders.....	1
4-H Pledge.....	2
Welcome to Mini 4-H .....	2
Non-Competitive Policy .....	3
Equal Opportunity .....	3
Mini 4-H Meetings, Mini 4-H Fun Day .....	4
Mini 4-H Safety Policy .....	4
Mini4-H Important Notices .....	4
Mini 4-H Project Descriptions & Exhibit Options.....	5
Mini 4-H Livestock Descriptions & Exhibit Options .....	9
Mini 4-H Activity Sheets.....	11



**PURDUE EXTENSION PULASKI COUNTY OFFICE**

Pulaski County Extension Service  
125 S. Riverside Drive Rm.120  
Winamac, IN 46996  
Phone: 574-946-3412  
Fax: 574-946-3680  
Hours: Monday-Friday 8:30 AM-4:30 PM  
Web: [www.extension.purdue.edu/pulaski](http://www.extension.purdue.edu/pulaski)  
Enroll online at [v2.4honline.com](http://v2.4honline.com)

**Extension Educator - 4-H Youth Development...Samantha Williams**  
([ssporled@purdue.edu](mailto:ssporled@purdue.edu))

**Extension Educator - Health and Human Sciences...Mandy Nielsen**  
([amedbour@purdue.edu](mailto:amedbour@purdue.edu))

**Extension Educator - Agriculture and Natural Resources...Phil Woolery**  
([pwoolery@purdue.edu](mailto:pwoolery@purdue.edu))

**4-H Youth Development Program Assistant...Pamela Rausch** ([prausch@purdue.edu](mailto:prausch@purdue.edu))

**Nutrition Education Program Assistant...Marla White** ([mstanfor@purdue.edu](mailto:mstanfor@purdue.edu))

**Office Manager...Kristy Medley** ([medleyk@purdue.edu](mailto:medleyk@purdue.edu))

**Secretary...Colleen Klausing** ([cklausi@purdue.edu](mailto:cklausi@purdue.edu))

**Secretary...Donna Solfrizzo** ([dsolfriz@purdue.edu](mailto:dsolfriz@purdue.edu))

**Mini 4-H Leaders:** Stephanie Wheeler  
Amy Nelson  
Melissa Hickle

## 4-H PLEDGE

I pledge my **HEAD** to clearer thinking,  
my **HEART** to greater loyalty,  
my **HANDS** to larger service,  
and my **HEALTH** to better living,  
for my club, my community,  
my country, and my world.



### Welcome to Mini 4-H

Mini 4-H is a fun and educational program designed to help build self-esteem by providing youth the opportunity to learn and be recognized through non-competitive experiential learning. It also helps develop an interest in continuing the 4-H program.

### Who can join Mini 4-H?

Anyone in kindergarten, 1<sup>st</sup>, or 2<sup>nd</sup> grade can be in Mini 4-H.

### How do I enroll & how much does it cost?

You can enroll online or paper copies are available at the Extension Office if needed. The Mini 4-H manual will be emailed to all Mini 4-H families. Physical copies may be picked up at the Extension Office or at the Mini 4-H meetings. You can also find the manual on our website at [extension.purdue.edu/Pulaski](http://extension.purdue.edu/Pulaski). This manual will explain how to exhibit your projects at the fair. There are different projects to choose from. Mini 4-H members are not limited on how many projects they can exhibit at the fair. A description of exhibit options for each project is located in this handbook. There is no fee to enroll in Mini 4-H and the manuals are free!

### Where do I enroll?

Enroll online at [v2.4honline.com](http://v2.4honline.com). If you do not have an email, please contact the Extension Office for a paper form.

### What do I do with my exhibits?

You will bring your project exhibits to Mini 4-H Project Check-In. Each exhibit will be checked in at the Fairgrounds. All exhibits receive ribbons and will be placed on display in the 4-H Exhibit Building during the Pulaski County 4-H & Community Fair. You are not required to stay for project check-in but someone will be available to ask the Mini 4-H member about their project, if they would like to talk to someone. Mini 4-H project exhibits will be released on Wednesday, June 3<sup>rd</sup> from 4-6pm. You can pick your exhibits up at this time to take home. Please make arrangements with a friend or family member if you cannot be here to pick up your child's projects.

### Mini 4-H Non-Competitive Policy

Mini-4-H is a program designed to encourage the positive development of children, kindergarten through second grade. The goal of Mini 4-H is to help young children explore friendships outside the family; explore the way in which things work; practice both small and large muscle control, and think about the ways people work together on projects.

**Projects will NOT BE JUDGED. Instead, each exhibited project will have a positive statement.**

### Equal Opportunity

It is the policy of the Purdue University Cooperative Extension Service that all persons have equal opportunity and access to its educational programs, services, activities, and facilities without regard to race, religion, color, sex, age, national origin or ancestry, marital status, parental status, sexual orientation, disability or status as a veteran. Purdue University is an Affirmative Action institution. This material may be available in alternative formats.

If you need a reasonable accommodation to participate in this program, contact the Extension Office at (574) 946-3412 by one week prior to the meetings.

### Mini 4-H Meetings

Normally there are two meetings held a year – one in April and one in May. Information is sent out once meeting dates are officially set. There is also a Mini 4-H Fun Day usually scheduled in June at the Winamac Town Park. Be on the lookout for information once these dates are officially set for the year. Feel free to watch our Facebook page for updates (Purdue Extension-Pulaski County).

**Meetings are not mandatory.** Parents, please stay with your children during the meeting. Meetings will be a fun time for all Mini 4-Hers to gather together and get to know one another. We will learn more about 4-H and the Mini 4-H program, as well as engage in some fun activities.

### Mini 4-H “SAFETY” Policy

Each county determines its own programs, classes, and participation requirements subject to the following safety guidelines. Mini 4-H members in grades kindergarten, 1 and 2 will be allowed to show, work with, or care for animals that weigh 300 pounds or less after their parent or legal guardian has signed a liability release. Mini 4-H members may only show, work with, or care for animals over 300 pounds when they are assisted by a parent/legal guardian. ASSISTED MEANS THAT THE ADULT HAS CONTROL OF THE ANIMAL AT ALL TIMES.

If the guidelines stated in this policy are not followed for a particular event or activity, then such event or activity shall not be considered to be a 4-H event or activity and shall not be under the responsibility of the Extension 4-H Educators or covered by Purdue University.

Mini 4-H'ers will only be allowed to exhibit and handle live animals after parents or guardians have signed a liability release. Pulaski County will offer Mini 4-H animal classes for Beef & Dairy Starters, Goats, Sheep, Swine, Poultry, Rabbits, Horse & Pony, and Dog.

### **Mini 4-H IMPORTANT NOTICES**

Any situation not covered by these rules shall be handled by the 4-H Youth Development Extension Educator. Rules listed in the Pulaski County 4-H Members Handbook will take precedence over exhibit requirements listed in the project manual.

NOTE: The Pulaski County 4-H Clubs, Pulaski County 4-H & Community Fair Association, Pulaski County Extension Board, and the Pulaski County 4-H Council, DO NOT assume any liability for loss or damages to any article, but attendants will use all precaution possible to avoid any losses or damage.

### **Mini 4-H Projects & Exhibit Options**

Listed below is a brief description of the exhibit options for each project. You only exhibit one of the options listed for each project you choose. **Mini 4-H Members should complete the Mini 4-H Record Sheet included in the back of this book to turn in with all non-livestock projects and complete 2 activities of the child's choice. Livestock projects use a separate record sheet which is also included.**

**Note - All posters made for Mini exhibits should be 22"X 28". Refer to the 4-H Non-Livestock Project Handbook**

### **Mini Aerospace (Rocketry)**

Exhibit a model rocket or make a poster about aerospace. Turn in the Mini 4-H Record Sheet with your Mini 4-H Leader signature to complete the project. ***“Ready to Fly” or E2x rockets are not acceptable in the Mini 4-H Aerospace project.***

#### Exhibit Options:

- Read a story about rockets or exploring space. Make a poster about what you learned.
- Watch the next live shuttle launch on television or watch a video of a launch. Make a poster describing the launch.
- Make a model rocket out of craft materials.

### **Mini Arts & Crafts**

Exhibit **one** of the following options and complete a Mini 4-H Record Sheet with your Mini 4-H Leader's signature to complete the project.

#### Examples Include:

- \* Painting
- \* Beaded Jewelry
- \* Decoupage
- \* Hand Print Art
- \* Drawing
- \* Craft Kit
- \* Gift Bag
- \* Homemade Christmas Ornament
- \* Any other craft you can think of!

### Mini Collections

Exhibit **one** of the following options and complete a Mini 4-H Record Sheet with your Mini 4-H Leader's signature to complete the project. **Note: Collection should be exhibited in a zip lock bag to be grouped for display.**

#### Examples Include:

- \* Collection of Cars (Hot Wheels, Matchbox, Models, etc.)
- \* Collection of Dolls
- \* Collection of Stickers
- \* Collection of Rocks
- \* Any other Collection that you may have!

### Mini Dog (Animal Exhibition or Non-Animal)

Learn the responsibilities of caring for your dog. Exhibit one of the following exhibit options. Your Mini 4-H Leader must sign the record sheet to complete the dog project.

#### Animal Exhibition Option:

- Mini members can attend every 1<sup>st</sup> of the month practice at 6:30pm for a special training session just for them. They are welcome to observe any regular dog practice as well. Mini members will be borrowing dogs from other 4-H dog members who have volunteered and the leaders have approved.

#### Non-Animal Exhibit Options:

- A picture you have drawn of a dog
- A story you have written about a dog
- A poster about a dog

### Mini Flowers or Garden

Exhibit **one** of the following exhibit options and complete a Mini 4-H Record Sheet with your Mini 4-H Leader's signature to complete the project. Mini 4-H members are responsible for watering their own plants.

#### Exhibit options:

- One plant in a pot. You must have taken care of your plant for at least two months before judging.
- A plate with a maximum of three vegetables (home grown)
- Make a poster showing pictures of vegetables /flowers.
- A plastic vase or a disposable jar with 1-3 flowers.

### Mini Foods

Exhibit **one** of the following options and complete a Mini 4-H Record Sheet with your Mini 4-H Leader's signature to complete the project.

Examples Include:

- Popcorn Snack
- 3 Cookies– no bake, slice & bake, or homemade
- 3 Marshmallow treat squares
- Any other yummy treat
- A poster you made that shows at least three kitchen safety rules

**Mini Lego Project**

Mini 4-H member exhibits should be simple and kits may be used. The use of the word “Lego” is used only as a guide for the project. You are free to use any brand of plastic snap-together or connecting pieces to complete your project. Decals and other materials are optional to use with your display. Exhibit **one** of the following options and complete a Mini 4-H Record Sheet with your Mini 4-H Leader’s signature to complete the project. **NOTE: Lego exhibits should be exhibited in a zip lock bag.**

Exhibit Options:

- Make a simple Lego snap together project
- Make a poster with pictures of Lego projects that you have made or ones you would like to make
- Write a story about Lego’s with illustrations of Lego’s on a poster

**Mini Pet Pals Project (Animal Exhibition or Poster)**

Learn the responsibilities of caring for your small pet. Exhibit one or both of the following exhibit options. Mini 4-H Members must complete an activity listed below and a Mini 4-H Record Sheet with your Mini 4-H Leader’s signature to complete the project.

Animal Exhibition Option:

- Mini 4-H members have the option to exhibit their small animal (hamster, fish, guinea pig, lizard, etc.) in the Pet Pals show during the fair

Non-Animal Exhibit Options:

- A picture you have drawn of your pet
- A story you have written about your pet
- A poster about your pet

Mini 4-Hers can put pictures, magazines clippings, or any information on a poster board. Exhibit one of the following options and complete a Mini 4-H record and activity sheet. All posters made for Mini 4-H exhibits should be 22”X 28”. A plastic sleeve is required for posters. (Plastic sleeves and posters are available for purchase at the Extension Office.)

Exhibit Options:

- |                   |                         |            |
|-------------------|-------------------------|------------|
| • Aquatic Animals | • Fam Animals           | • Pets     |
| • Bugs/Insects    | • Jungle/Safari Animals | • Reptiles |



### **Mini Photography Project**

Exhibit **one** of the following options and complete a Mini 4-H Record Sheet with your Mini 4-H Leader's signature to complete the project. **NOTE: Mini 4-H member or family members may take the pictures exhibited.**

#### Exhibit Options:

- A scrapbook page with picture (s) of your choice.
- Pictures exhibited in small photo album
- Poster displaying pictures

### **Mini Nature/Wildlife**

Exhibit **one** of the following options and complete a Mini 4-H Record Sheet with your Mini 4-H Leader's signature to complete the project.

#### Exhibit Options:

- Birds or Animal Poster
- Bird or Animal Feeder

### **Mini 4-H Livestock**

#### **PROJECT REQUIREMENTS FOR MINI LIVESTOCK:**

- Mini 4-H members should complete two activities in this manual.
- Mini 4-H members should complete the Mini 4-H Livestock Record Sheet and have it signed by a 4-H Club Leader.
- If you are exhibiting an animal at the fair, completion requirements should be turned in to the species-specific livestock committee at check-in.

#### **EXHIBIT OPTIONS: (Note - All posters made for Mini exhibits should be 22"X 28".**

##### **Refer to the 4-H Non-Livestock Project Handbook)**

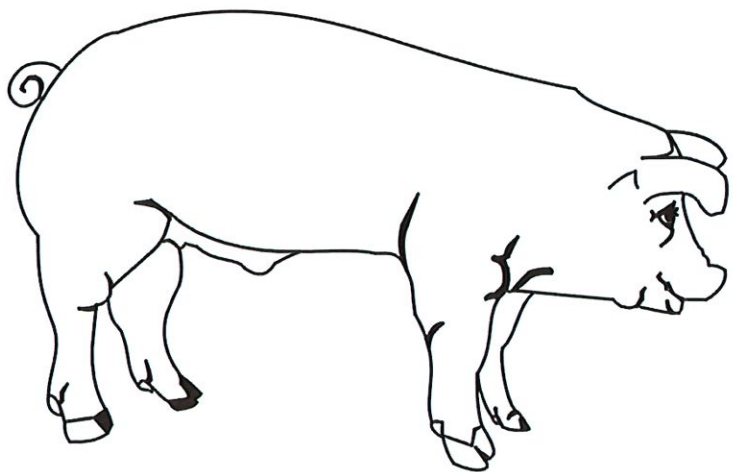
- Write a story about your favorite farm animal.
- Make a poster showing the different things that farm animals provide for us. (Example: hamburgers, wool, eggs, etc.)
- Make a poster showing the different kinds of farm animals.
- Talk to a farmer. Ask him questions about working on a farm, the farm animals he raises, and the feed that he uses. You can ask him your own questions. Write a story about the farmer.
- Write or rewrite your favorite fairytale using farm animals. (Example: Cinderella on the Farm)
- Make a model of your favorite farm animal. If you want, add it to a farm scene made in a shoebox.
- Exhibit a Beef Starter Calf, Dairy Starter Calf, Goat, Sheep, Swine, Horse or Pony, Rabbit, or Poultry. Mini 4-H members may show the animal during the regular animal show listed in their program during the Mini 4-H Showmanship. No champions will be chosen in the Mini 4-H class, but ribbons will be awarded. Species-specific livestock rules and General Livestock Rules apply to Mini 4-H members. Please check your species-specific requirements that follow if you are exhibiting an animal.

**THE FOLLOWING GUIDELINES ARE FOR SPECIES SPECIFIC RULES**

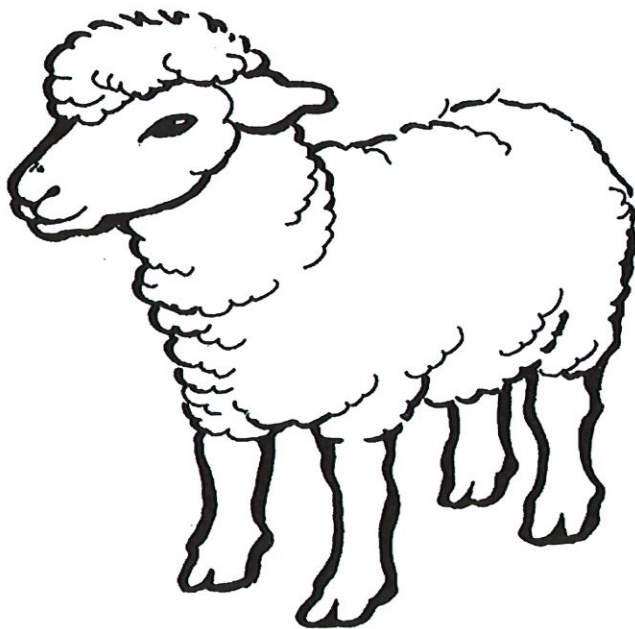
- MINI 4-H LIVESTOCK EXHIBITORS: Mini 4-H animals, depending on species, can either be housed all week of the fair or just show up for the day of the show.
- ALL MINI 4-H livestock animals must be tagged if required in the species livestock rules. They do not need to attend the tagging day if only exhibited by the Mini 4-H member but can purchase a tag from the Extension Office.
- **Mini 4-H'ers will only be allowed to exhibit and handle live animals after their parent or legal guardian has signed and turned in the liability release.**
- Mini 4-H'ers may sell their pig as excess. Please contact the Swine Chairman if you are planning to sell your pig as excess before the end of the swine show.

Mini 4-H members should complete two activities in the Mini 4-H Manual, plus complete the Mini 4-H Livestock Record Sheet and have it signed by a 4-H Club Leader. Species-specific livestock rules and General Livestock Rules apply to Mini 4-H members.

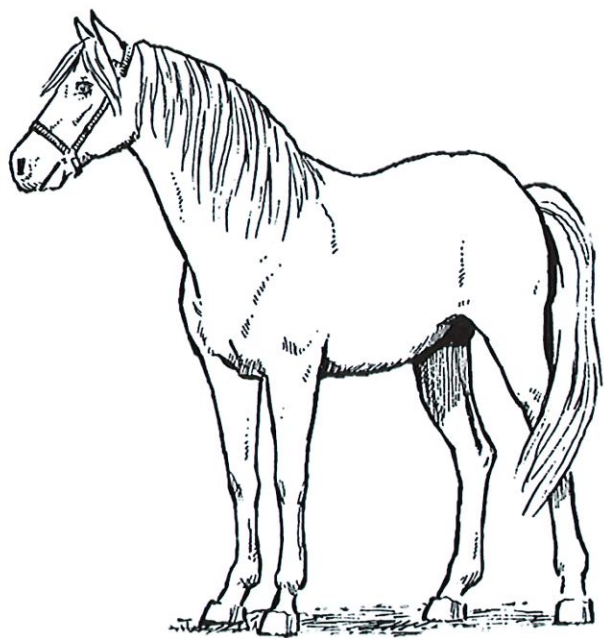
**Activity 1 Label and Color:** Color and write the name of the animal you colored.



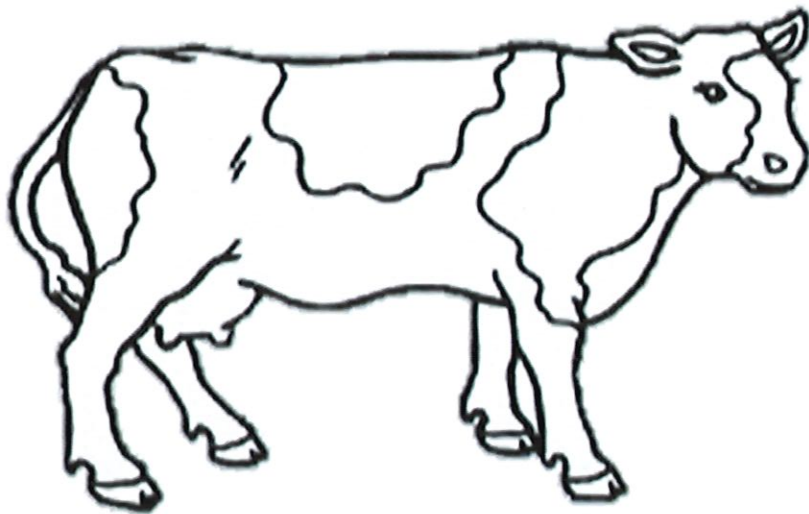
1. \_\_\_\_\_



2. \_\_\_\_\_



3. \_\_\_\_\_



4. \_\_\_\_\_

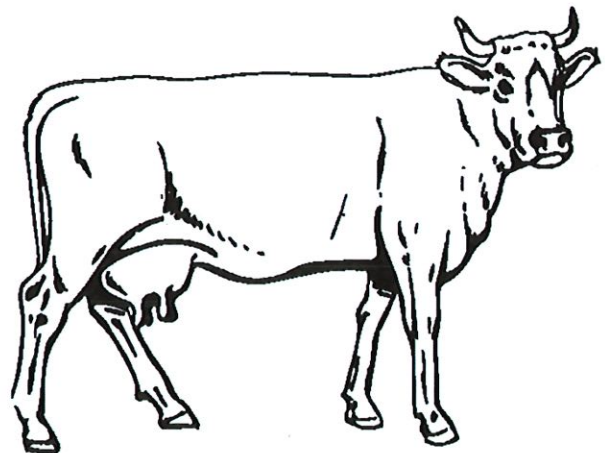
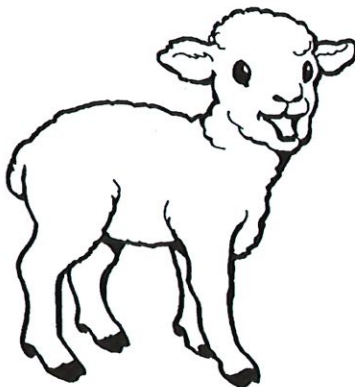
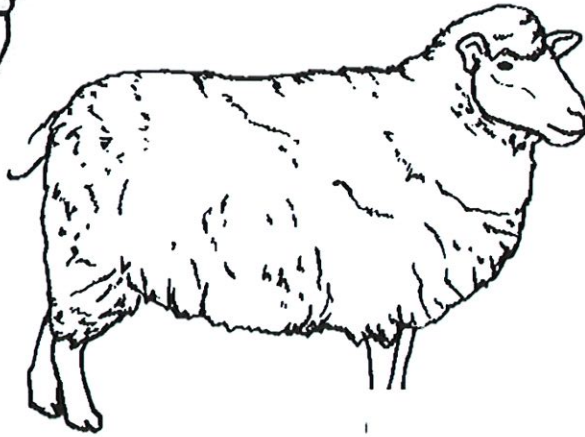
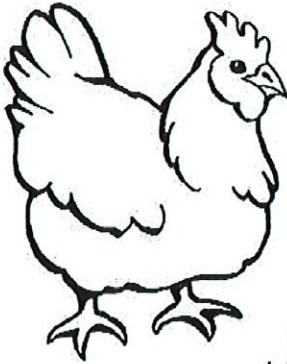
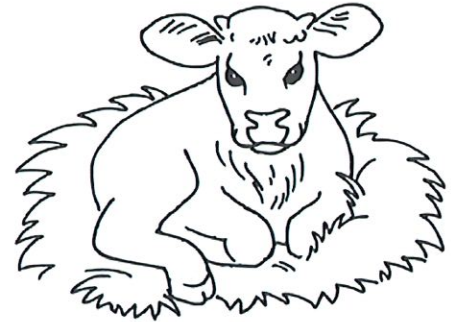
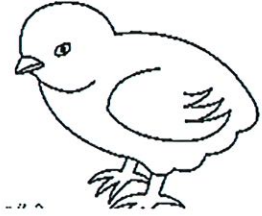
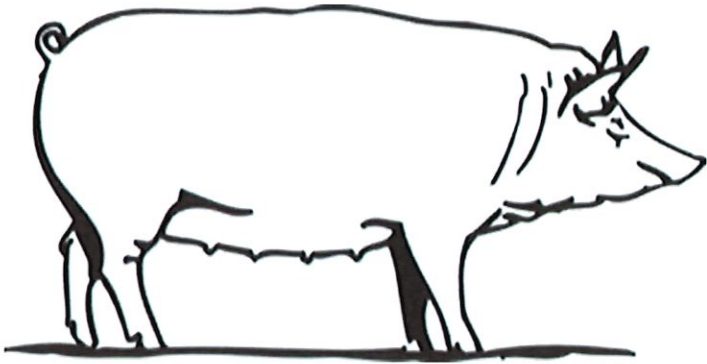


Activity 2 Connect and Color: Connect the dots and color the picture.





**Activity 3 Match the BIG to the Small:** Look at the pictures. Draw a line to match the big animal with the small animal then color the picture!







Activity 4 Color by Number: Color the picture by using the color codes with each number.



1 = green  
2 = red  
3 = tan

4 = yellow  
5 = brown  
6 = pink