



# Garden Thyme

September 2019

<https://extension.purdue.edu/porter>

Volume 5, Issue 5

# Θαλασσινά Ψάρα

## Growing Growing Growing

By Nicole "Nikky" Witkowski

Purdue Extension Educator - Agriculture & Natural Resources



It's taken a while to get to the summer months, but we are growing finally! Be watching in your gardens and others for fungal problems and proper watering practices. We have had lots of rainfall events this year, and they are adding up in most areas. However, don't fall into a belief that you are totally off the hook for watering. Some of these rains are very spotty and not everyone is getting enough. I have had a rain gauge out for over a week without dumping it, and it has not collected an inch of rain in total, even though there were several rain events.



Watch out as well for Magnolia Scales making the tree black and sticky. If the tree is doing ok, you can wait to treat when there are no leaves. Otherwise, make sure you find something that will actually work. Purdue has a great publication on treatments that can be found as E-29, "Scale Insects on Shade Trees and Shrubs," <https://extension.entm.purdue.edu/publications/E-29/E-29.html>.

Speaking of growing, we are working towards "growing" back into more opportunities at Gabis Arboretum and getting some volunteer opportunities together. There will be opportunities to work days there with others in the community, or you can go out at other times. If you volunteer, make sure to enter those hours as hours with Gabis on the website. There is one if you are a docent (tour guide), but all other tasks with Gabis, would fall under the heading of "Demonstration & Community Gardens." Keep in mind: You are not to handle money or work the entrance booth. Otherwise, please ask if you have questions! Let me know as well if you want to be able to go out at other times, and I will get you in contact with the right person.



### IN THIS ISSUE

Notes from Nikky	1
Bus Trip Goes Extra Mile	2
Hotline Hotspot—Magnolia	3
Porter County Fair Flowers	4
PCMG 2020 Candidates	5
Garden Walk 2019	6
Gabis Arboretum	7
DNR Weekly	8



# Garden Thyme

September 2019

Volume 5, Issue 5

## Bus Trip Goes Extra Mile

By Maureen Phillips, PCMG Class of 2003



Aquascape Construction is a water feature design and installation company.



Jackie Fenchak and Judy Engle enjoy lunch at Cantigny.



A stroll through the 9 acre Gardens at Ball spark some fantastic ideas!

Wednesday, August 7, was a picture-perfect day as we boarded the bus. First stop: Aquascape Construction in St. Charles, IL.

About 9:45 a.m., our bus stopped on Roosevelt Road, and we got evacuated to an open field. The brakes were smoking, and our driver called for help. West Chicago police arrived, followed shortly by the fire department's ambulance and fire truck.

When it was clear that the thirty-six of us would be stranded for some time and our field trip delayed, one of our rescuers called a contact at Ball Horticultural Company whose trial gardens were within walking distance of the "incident." Ball sent a golf cart to welcome us to their gardens and transported two members with mobility issues to the gardens. Meanwhile, since the bus company was sending a replacement vehicle to the next stop on our itinerary, Ball employees used their own vans, and West Chicago arranged for two of their Parks Department busses, to transport us to Aquascape.

Not only did Kathy Ruble, PCMG Education Committee Chair, and the "kindness of strangers" enable us to make all the scheduled stops on our bus trip, but we got a bonus stop at Ball! How nice was that? We sent thank-you letters to the mayor of West Chicago and the president of "Ball Hort" and gave them Extra-Mile Awards "for exemplifying an attitude and industriousness which exceeds the standard, goes beyond what is expected and seizes the opportunity to excel. This award is presented for exceeding expectations . . . and then some!"



**THE EXTRA MILE AWARD**  
*presented to*  
**Ball Horticultural Company**  
*for exemplifying an attitude and industriousness which exceeds the standard, goes beyond what is expected and seizes the opportunity to excel.*  
*This pre-expectation award is sent for exceeding tations . . . and then some!*

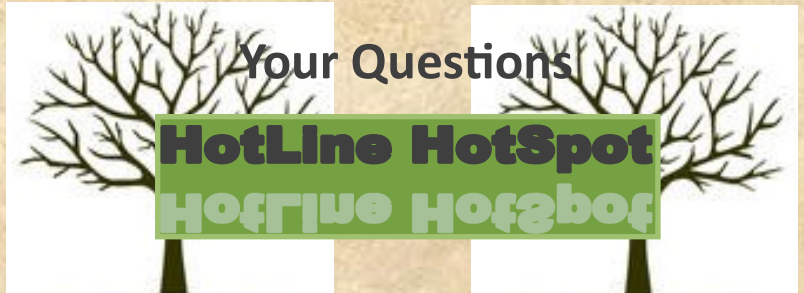


The Gardens at Cantigny offer 29 acres of flourishing, blooming tranquility.



## Magnolia Scale

By John Nash




Recently, the PCMG Hotline has been receiving numerous phone calls on a common magnolia problem. The callers report that their plants have a black sticky substance on the leaves and branches. Other symptoms are strange looking bumps with a waxy covering on the branches, yellowing leaves, along with a lack of vigor.

The cause is magnolia scale. Magnolia scale is a native insect. Its favorite food source are members of the magnolia family. Mature magnolia scale insects are about a half inch long and covered with a waxy white substance. At maturity the scale becomes immobile and is attached permanently to the branches much like a barnacle on the hull of a ship.

Once attached to a branch, the insect's mouth parts pierce the bark of the plant and it begins sucking out fluids. When feeding, the scale excretes a sweet sub-

stance (honeydew) which coats the leaves and branches of an infected tree. The honeydew becomes covered in a black, sooty mold. In time, the scale reproduce and the population on a plant will explode. The mobile, immature scale (nymphs/crawlers) appear in August.

Fortunately, there are remedies available for the homeowner. A drench insecticide containing imidacloprid can be used in the early summer to eliminate adult scale before the crawlers appear. Nymphs or crawlers can be controlled with insecticidal soaps or horticultural oils in August and the fall.

For more information on magnolia scale see: <https://hortnews.extension.iastate.edu/magnolia-scale> "Magnolia Scale"- Iowa State University – Extension & Outreach – Horticultural & Home Pest News. 



JANNETTE THRANE  
GREENE COUNTY EXTENSION  
IOWA STATE UNIVERSITY  
JULY 29, 2008



DUANE GISSEL  
SCOTT COUNTY EXTENSION  
IOWA STATE UNIVERSITY  
AUGUST 25, 2008



# Garden Thyme

September 2019 Volume 5, Issue 5

# Επιλογή Λιλιών



Wilma Willard wins *Best of Section* for Roses and Hostas.



Scott LaVelle earns *Best of Show* for his standout Oriental Lily.



## OPEN CLASS EXHIBITS



Superintendent Janet Magnuson retrieves entry for judges' closer inspection.

## Better than “Fair” Flowers— they’re Fantastic!

By Janet Magnuson, Superintendent of Open Class Flower Show, PCMG Class of 1994


It was another great year for flowers at the Porter County Fair. Twenty-five people brought 791 entries and total prize money was \$1,893. Our cold rainy spring was good for the lilies, but not so good for the hydrangeas and hibiscus.

Best of Section winners were: Nancy Cole (2), Deb Gruszka (2), Cheryl Holmgren, Rhonda LaVelle (3), and Wilma Willard (2).

Best of Show winners were Scott LaVelle for his oriental lily, Rhonda LaVelle for her blue platycodon, and Gloria Potter for her coleus.

There were eight master gardener participants – Sandy Appleby, Judy Engle, Sharon Fitzsimmons, Monica Kerr, Diane Popa, Gloria Potter, Suzanna Tudor, and Wilma Willard. All together they won 41 first place ribbons, 33 second place ribbons, 29 third place ribbons and 8 honorable mentions. Wilma Willard won \$122 in prize money.

Our judges were Monica Kerr, Laurie Guess, Maureen Phillips, Kathy Ruble, Marty Serozynski, Wilma Willard and Suzanna Tudor.

Thank you to everyone who helps to make the flower show a success. 



These 1st place winners will be examined by the judges to decide *Best of Show*.



## Something to think about ...

## 2020 Candidates

By Sue Spelde, President of PCMGA,  
PCMG Class of 2004



It is the time a year when we as members of the PCMGA need to think about who is going to run this organization next year. We elect the president, vice president, secretary, treasurer and three members at large at the annual meeting in November. Seeking candidates to run for these positions is the role of the Nominating Committee. This is an important but short-term commitment. The committee usually meets once or twice to generate a list of possible candidates and can either make calls to ask the potential candidates to serve during that meeting or from home at another time. If you would like to have some influence on who runs the PCMGA in 2020, then please consider serving on this committee.

In addition, all members are welcome and encouraged to make nominations for the elected positions. Have you met a fellow PCMGA member and thought that they would make a good president, vice president, secretary or perhaps treasurer? What about yourself?

**Yes, you can even nominate yourself. After all, who knows your skills and interests better?**

Can you stand up in front of a group of friends and run a meeting? You are presidential material. Can you keep a checkbook in balance, understand budgets and spreadsheets? You qualify for treasurer. If you have good listening skills and can take notes, then the secretarial position is for you. It may surprise you to know that these positions are not as time consuming and daunting as you may think.



So don't be bashful! If you want to be more involved with the administration of the PCMGA then speak up and volunteer to use your time and talents serving on the Executive Board.

For more information about a particular position, have someone you want to nominate, or have an interest in serving on the Nominating Committee, please contact Sue Spelde at [skspelde@gmail.com](mailto:skspelde@gmail.com) or 219-242-5025.



# Garden Thyme

September 2019 Volume 5, Issue 5

# Θαλασσινά Λιβάδια



## Garden Walk 2019

By Ellen Standafer & Kaye Lynne Beeler,  
Garden Walk Co-chairs, both PCMG Class of 2017



Garden Walk 2019 is over, and to the 500+ people who participated, we thank you. Though attendees were a little wilted from the heat, the gardens were at their best.

The season was just right for the beautiful calla lily display at the Harvey garden. The spectacular vegetable garden and orchard on the Calafati/Coleman property was a huge surprise to most visitors. Those homeowners' commitment to sustainability provided a wealth of ideas for attendees, including raising chickens and bees in a subdivision. Landscaping ideas abounded at the Porrett and Bergeron gardens. Both homeowners do all the work themselves and have an eye for design in both the layout and plant selections. Hostas and shade gardening ideas were the showcase of the Hrusovsky and Casteel gardens. The last garden on the tour added just a touch of whimsy with the lovely wooded pathways through the Higgins-Ballas property. In addition to the natural displays, Marcia Carson's wonderful artistic team provided yet another remembrance of a spectacular event.

We're already scouting properties for Garden Walk 2020. If you (or someone you know) have a garden to show, we need you for next year! Every garden has a story and that story is something worth sharing. Garden owners tell us that interacting with volunteers and attendees provides a wealth of ideas, and they learn so much from the experience.

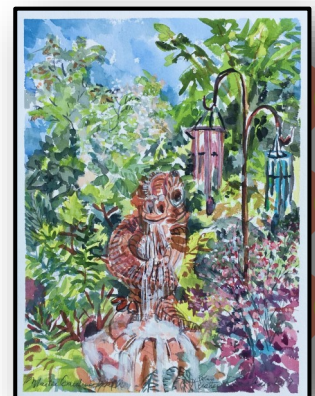
To nominate a garden, please contact us, or [pcmastergardener@gmail.com](mailto:pcmastergardener@gmail.com), and we'll get the process started. 🌸

Garden Walk 2020 Co-Chairs

Kaye Lynn Beeler [klbeeler@msn.com](mailto:klbeeler@msn.com)  
Ellen Standafer [estandafer@comcast.net](mailto:estandafer@comcast.net)



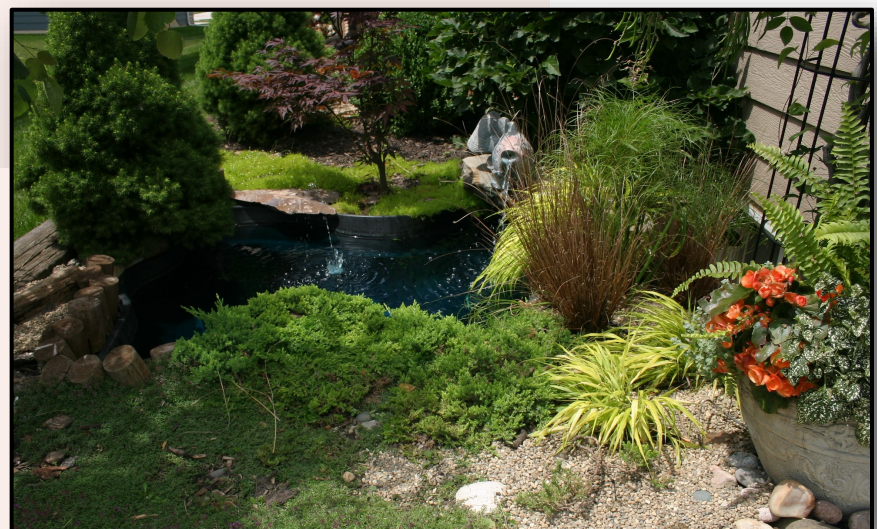
Garden Host Lin Bergeron with Garden Walk Co-chairs



Artwork by Kirsten Renehan



Brian and Diane Porrett, Garden Hosts; Artwork and Photo by Kirsten Renehan



Garden Walk participants enjoy this birds-eye view of Lin Bergeron's peaceful pool



# Garden Thyme

September 2019 Volume 5, Issue 5

# Θαίσημα Γυλάμα

**Gabis  
Arboretum  
at Purdue  
Northwest**

## Great Opportunities for Education and Volunteering!

By Marcia Carson, PCMG Class of 2012

Are you interested in volunteering but can't figure out what to do? Master Gardeners and the Gabis Arboretum (formerly Taltree) are working on a relationship in which we all win. Take a look at the list below and hopefully something will inspire your green thumb, and you can earn volunteer and/or education hours!

### Ongoing opportunities:

- Be a golf cart tour guide! Gabis employees will train you (education) to lead tours (volunteer) through the gardens. Many groups, including Master Gardeners from other states have requested tours.
- Take a hike! Spring and fall bring out lots of school groups. Shadow a "hike docent" (education) and then take a group out on your own (volunteer).
- Adopt a garden! The arboretum has ten beds, including the Welcome Gardens, the Railway Garden, two Rose Gardens, the Pavilion, Native Plant Garden and Adventure Garden. Share what you know and learn from the Gabis staff. Then volunteer in one or more of the gardens with staff members or on your own.

### A few one-time opportunities – there are many more on the website. <https://www.pnw.edu/gabisarboretum>

- September 21: United Way's "Day of Caring" - help Valparaiso University volunteers work in the gardens.
- September 21: "Artists Who Love Nature" - Illustrator Melissa Washburn will lead a short hike to identify flowers you will draw during class.
- October 5: A morning work party - join Gabis staff to prepare for fall.
- October 5: "Artists Who Love Nature" - Retired art educator Marcia Carson will introduce the nature-themed art of Andy Goldsworthy and others before creating your own ephemeral art.
- October 19: "Putting your Roses to Bed for the Winter" - Adolph Repp of the Rosarian Society will demonstrate how to prep your roses for survival.
- November 7, 14 and 21: Nikky Witkowski will teach a series of classes for gardeners: Sharpening your Pruners, Packing up your Garden Tools for Winter, and Healthy Houseplants.

**People to know!** Barb Raschke [braschke@pnw.edu](mailto:braschke@pnw.edu), or 219-989-8487. Get your name on the volunteer list to receive emails about opportunities, ask her any questions or register by phone. Deb Way [wayd@pnw.edu](mailto:wayd@pnw.edu) can answer any questions and take registrations. Denise Pruitt is the gardener – text her at 219-765-0755 to volunteer in the gardens. 🌸





# Garden Thyme

September 2019

Volume 5, Issue 5

While you are volunteering at Gabis Arboretum,  
meet some

## New Friends amongst the flowers!



Photo credits: © Denise Pruitt

## Garden Thyme

is a publication of the Indiana  
Porter County Master Gardeners Association

[www.pcgarden.info](http://www.pcgarden.info)

### Newsletter Team

Marcia Carson, Coordinator

Suzanna Tudor, Editor

Wilma Willard, Designer

Earn volunteer credit for contributing to the newsletter; contact the Extension Office for more information.  
219-465-3555

## DNR Weekly Review

By Suzanna Tudor, PCMG Class of 2002

Thank you to John Nash for providing us with the PCMG Hot Line topic and insight into what might be causing our plants problems and how to help them. And for consistent info, did you know you can receive a weekly update from the Indiana DNR Division of Entomology and Plant Pathology in an e-mail newsletter? Yes, you can. According to their website, "the Entomology Weekly Review includes discussions of pest and disease trends, new or unusual findings, and division news and events. This report is published weekly from early May to Labor Day. Additional emails are occasionally sent during the off-season." I've subscribed and find it an excellent continuing education tool, as well as aiding me in discovering what's ailing my plant babies. If interested and to subscribe click this link:

[https://public.govdelivery.com/accounts/INDNR/subscriber/new?topic\\_id=INDNR\\_15](https://public.govdelivery.com/accounts/INDNR/subscriber/new?topic_id=INDNR_15)



### EARN EDUCATION CREDIT!

#### Education Opportunities around Indiana

<https://www.purdue.edu/hla/sites/master-gardener/events/categories/advanced-mg-training-opportunities/>

**Monthly PCMG meetings** typically held on the 2nd Wednesday of the month, often include an educational topic after the business meeting. These can be logged as educational hours, as well as, educational videos of former Garden Show seminars found at [pcgarden.info](http://pcgarden.info) on the Member Pages.

**Equal Opportunity Statement** It is the policy of the Purdue University Cooperative Extension Service that all persons have equal opportunity and access to its educational programs, services, activities, and facilities without regard to race, religion, color, sex, age, national origin or ancestry, marital status, parental status, sexual orientation, disability or status as a veteran. Purdue University is an Affirmative Action institution. This material may be available in alternative formats.