

# April 2024 Newsletter

Dear Friends,

Spring has finally sprung! ANR wise I am keeping busy with our Adult Master Gardener Course on Thursday nights and our Junior Master Gardener course at Anderson Elementary. If you would like a taste of Master Gardeners come out April 18th to our Invasive Species Hike, information on page 4.

4-H wise, registrations are now open for Mini 4-H Camp and Horse Camp. They remain open for SEI 4-H Camp and our FAMACHA program.

## In this Issue

- 2 Total Solar Eclipse
- 3 AI School, Pollinator Day, Growing Season
- 4 Invasive Species Hike, Cicadas, Homegrown 4-H is getting growing!
- 5 May 15th 4-H Online Deadline
- 6 Indiana QLC & Junior Leaders
- 7 Consumer Clothing, Fashion Review, Horse and Pony News
- 8 Mini 4-H Camp, 4-H Camp, FAMACHA
- 9 Homemaker Meeting Dates, Homemaker Scholarships, 4-H Senior Information needed
- 10 Upcoming Events

It may not look like it from how much space I have stole from the HHS portion of this letter but we are still doing HHS programs! Educators from surrounding counties are delivering Captain Cash at schools in our County and I continue to teach Youth Mental Health First Aid courses to Military Base personnel. Looking forward to expanding offerings once we get a few more people hired, hopefully very soon!

The next 4-H Fair Board meeting will be April 4th at 7 pm in the Community Building. The next Extension Board Meeting will be May 6th at 6:00 pm.

Sincerely,



Britt Copeland, Extension Educator

## New (ish) Face in the Extension Office Diane Thorpe- Extension Program Assistant

Please help us welcome Diane Thorpe as our new full time Extension Program Assistant. Diane was previously our part time summer program assistant. She started in this new role the middle of last month.



"I just wanted to reintroduce myself to those that don't already know who I am. My name is Diane Thorpe and I'm the new Program Assistant at Purdue Extension. I've been working in the office for the past 7 years during the summer. I'm excited to be a part of this amazing team on a full-time basis and I look forward to all the new and exciting things this job has to offer."

## Staff Directory

### Britt Copeland

County Extension Director  
4-H/ANR Extension Educator  
copelanb@purdue.edu

### Kasie Bachmann

Office Manager  
kbachman@purdue.edu

### Diane Thorpe

Extension Program Assistant  
thorped@purdue.edu

## We are hiring! - Two Summer Program Assistants

Purdue Extension - Jefferson County is hiring Two Summer Program Assistants. One of these positions we consider an "internship" which is perfect for former 4-H members returning home from college for the summer. The other is Diane's former position with a start date as soon as possible. Applications are available in the Extension Office. Email Kasie Bachman at kbachman@purdue.edu for an application.

# Agriculture & Natural Resources

## April 8, 2024 Total Solar Eclipse

On April 8, 2024 much of Indiana will experience a total solar eclipse with the path of totality covering much of southern and central Indiana. This monumental event is expected to attract hundreds of thousands of visitors to the Hoosier state. Purdue Extension Community Development seeks to support Indiana communities by connecting them with [resources to plan for a safe and successful solar eclipse](#).

### Eye Safety During a Total Solar Eclipse

Retrieved from NASA: [science.nasa.gov/eclipses](https://science.nasa.gov/eclipses)

Except during the brief total phase of a total solar eclipse, when the Moon completely blocks the Sun's bright face, it is not safe to look directly at the Sun without specialized eye protection for solar viewing.

When watching the partial phases of the solar eclipse directly with your eyes, which happens before and after totality, you must look through safe solar viewing glasses ("eclipse glasses") or a safe handheld solar viewer at all times. Eclipse glasses are NOT regular sunglasses; regular sunglasses, no matter how dark, are not safe for viewing the Sun. [Safe solar viewers](#) are thousands of times darker and ought to comply with the [ISO 12312-2](#) international standard. NASA does not approve any particular brand of solar viewers.

Always inspect your eclipse glasses or handheld viewer before use; if torn, scratched, or otherwise damaged, discard the device. Always supervise children using solar viewers.

Do NOT look at the Sun through a camera lens, telescope, binoculars, or any other optical device while wearing eclipse glasses or using a handheld solar viewer — the concentrated solar rays will burn through the filter and cause serious eye injury.

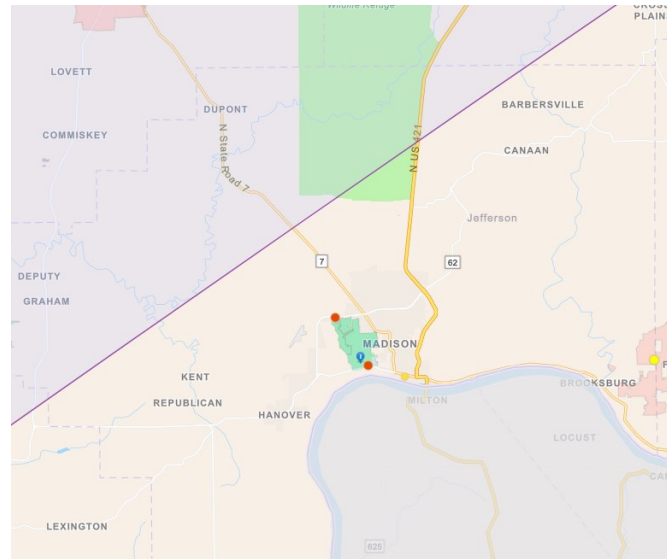
*Shortened for length.*

### K-12 Resources: Making your Own Sun Projector

Solar eclipses or otherwise, our teaching assistants from SMAP demonstrate how to make pin hole viewers for observing the sun. First the simple cereal box version and then to the 60 inch shipping box, both are suitable for eclipse viewing. The image produced by the longer box can actually reveal sun spots. The smaller the pin hole, the finer the resolution. A push pin or the tip of a small paper clip works well. And remember, NEVER LOOK DIRECTLY AT THE SUN.



<https://youtu.be/lpGsoGKuf3w>



### Path of Totality in Jefferson County Represented by Light Purple Shading

Retrieved from Indiana DNR: [www.in.gov/dnr/places-to-go/events/2024-solar-eclipse/](https://www.in.gov/dnr/places-to-go/events/2024-solar-eclipse/)

### Indiana DNR 2024 Solar Eclipse

As referenced above, the DNR will provide outdoor places to gather to watch the eclipse, great programs in the days before and during the event, and options for lodging so you can be ready and in place to enjoy it.

Rafael Lang is a professor of physics and astronomy at Purdue University. In this video, he explains what a total solar eclipse is and how people can experience it. <https://youtu.be/dqvfkFs4ddw?si=MxooB0lvAUDo5ARF>

### Travel Reminder from Indiana BOAH

Even if you do not intend to take in the total solar eclipse as it passes through Indiana on Monday, April 8, you might want to plan ahead if you anticipate traveling that day—especially if you are hauling livestock.

Partner agencies, including the Indiana State Police and the Indiana Department of Transportation, have advised the Indiana State Board of Animal Health of concerns about significant traffic delays associated with the scores of visitors expected to converge on Central Indiana to view the total solar eclipse at its peak. Crowds of TSE-watchers saw normal travel time of 2.5 hours become 9 hours after the eclipse that passed through Kentucky a few years ago.

# Agriculture & Natural Resources

April 22-24, 2024



## Testing Services Available at the Office for Soils, Forages, Feedstuffs, and Pests

## ARTIFICIAL INSEMINATION CERTIFICATION SCHOOL

### About This Course:

Purdue Extension is partnering with Select Sires to hold an Artificial Insemination (AI) class for beef and dairy producers interested in learning about: Anatomy/Physiology, AI Technique, Semen Handling, Estrus Detection/Timing and Estrus Synchronization program into their herd. The cost for the certification is \$450.

### Location & Info:

Cox Livestock  
1014 W County Rd 150 N  
Osgood IN 47037



Register Now @: <https://cvent.me/79EEqD> or

Purdue University is an equal opportunity/equal access/affirmative action university. If you require special accommodations to attend this event or have any questions about this event, please email Jill Andrew-Richards [jmrichards@purdue.edu](mailto:jmrichards@purdue.edu) or call 812-438-3656

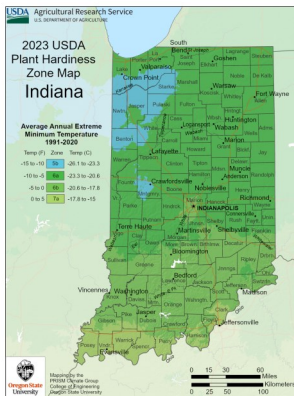
**Soils.** The extension office has soil testing bags & order forms available at any time. We are happy to help you read results as well.

**Forages.** We also have a new Hay Probe that can be checked out to collect samples. If you want to test other feedstuffs we have sample bags available as well. Postage is free for forage and feedstuff samples.

**Plant Pests and Diseases.** A valuable plant or tree dying and you don't know why? We can help you figure it out or mail a sample to the Plant & Pest Diagnostic Lab at Purdue. Samples need to be brought in on Mondays so they don't deteriorate in the mail over the weekend. Fees vary for each service.

## Freeze/Frost Probability & Growing Season Length

Figuring out what the weather is doing from one day to the next can be challenging, especially in Indiana. When you are making those decisions for your valuable crops and ornamentals Purdue has several great resources.



The Indiana State Climate Office makes daily updates to climate maps, data sets and planting recommendations. View their data at <https://ag.purdue.edu/indiana-state-climate/freeze-frost-probability-growing-season-length/>.

The USDA has also updated the Plant Hardiness Zone Map for 2024. Click here to see the new classifications:

[Planhardiness.are.usda.gov](https://planhardiness.are.usda.gov)



# JOIN US FOR POLLINATOR DAY!



WEATHER PERMITTING

SATURDAY, APRIL 27TH 10AM - 3PM

PURDUE RESEARCH PARK  
3000 TECHNOLOGY AVE.,  
NEW ALBANY, IN 47150



Pollinator Day is a **FREE** family-friendly event!

It includes hands-on activities for the whole family! Games, crafts, local vendors, selfie-station, food trucks, and booths full of information for all!



### Educational classes will be held on:

How To Catch a Swarm of Bees  
-Spring Valley Beekeepers

Pollinators & The Big Picture  
-Kevin Wiener (All Bugs Go to Kevin)

Supported in part by Duke Energy Foundation.



Purdue Extension Floyd County  
(812)-948-5470

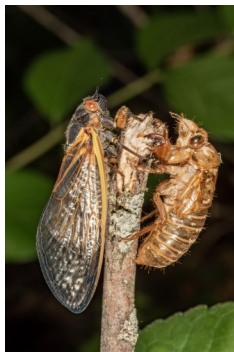
EA/EOU

# Agriculture & Natural Resources

## Cicadas in Spring!

By Bob Bruner & Alicia Kelley

Hoosiers are in for a special treat this spring. If you have lived in Indiana for more than a year, you have probably grown accustomed to the singing of cicadas in the later days of summer. However, in some years, cicadas will emerge in the spring. This occurred



in 2021 when most of the state was inundated in periodical cicadas as Brood X emerged from their 17-year development. This year, two broods will emerge concurrently: Brood XIII and Brood

XIX. Brood XIII is a 17-year cicada, while Brood XIX is a 13-year cicada. The emergence of these two broods isn't unusual, but this year is special because they will emerge at the same time. Their schedules haven't aligned for over two hundred years! The last time these two cicada songs were heard together, Thomas Jefferson was in the White House. While this may sound like Indiana is about to be covered in cicadas, there are a few facts that may change your expectations. Read full article here: <https://www.purduelandscape.org/article/6885/>

## PURDUE EXTENSION SWITZERLAND COUNTY SWITZERLAND COUNTY SOIL AND WATER CONSERVATION DISTRICT NATURAL RESOURCES CONSERVATION SERVICE

PRESENTS:

USDA & ITS AFFILIATES ARE EQUAL OPPORTUNITY PROVIDERS, EMPLOYERS, & LENDERS

## Wooded Invasive Species of Southeastern Indiana

APRIL 18, 2024 @ 6 PM

THIEBAUD FARMSTEAD

5147 E State Rd 56 Vevay, IN 47043



Guest Speaker:

**MADDIE WESTBROOK**

**JASON UTLEY**

DNR DISTRICT FORESTERS

Join area Master Gardeners on a guided hike and brief program to identify and discuss invasive species in Southeastern Indiana. Comfortable shoes are recommended.

Please RSVP to Purdue Extension- Switzerland County at (812) 427-3152 or email [keweaver@purdue.edu](mailto:keweaver@purdue.edu)



United States  
Department of  
Agriculture



Extension - Switzerland County

Natural Resources Conservation Service

Purdue Cooperative Extension is an equal access/equal opportunity institution.



## Homegrown 4-H Club & Madison Community Grocery Project to Maintain a Food Pantry Garden

The [Madison Community Grocery Project](#) provided funding to install two raised beds just this weekend at the extension office for the **Homegrown 4-H Club** to tend at their 4-H meetings. The gardens at the Extension Office will be food pantry gardens meaning that the produce raised will be donated to local pantries in the community. Way to go Homegrown 4-H Club for spearheading a great learning experience that benefits the community!

As things get more established we will reach out to other club leaders about having educational activities at the garden during 4-H meetings that happen on the fairgrounds. If you want to learn more about MCGP go to [madisoncommunitygrocery.com/](http://madisoncommunitygrocery.com/)

The ANR educator is currently delivering Junior Master Gardener Programming with MCGP at Anderson Elementary this spring. If you are interested in using this curriculum at your 4-H club meetings contact the office.



Purdue University Cooperative Extension is an Equal Access/Equal Opportunity Institution



# 4-H Youth Development



## May 15th 4-H Online Animal ID DEADLINE

All 4-H Beef, Dairy, Goat, Sheep, Swine & Horse and Pony Projects must have their animals identified and registered on 4-H Online by May 15th to exhibit in 4-H. There are no exceptions to this Indiana 4-H Rule. Vaccination forms are required to show your Dog, Cat, and Horses. You do not have to enroll your Dogs or Cats.

### What does my Livestock Animal Need to be Identified?

Each Livestock project needs at least one permanent form of identification per Indiana Law as set forth by the Indiana Board of Animal Health (BOAH). For most 4-H projects we require two forms on the county level and if the animal will exhibit at the Indiana State Fair DNA Samples are also required.

To enroll your animal 4-H online you will need the following:

- **County Tag and/or RFID Tag**– You will receive these tags at livestock tagging days. Superintendents will distribute these for Cattle on April 20th and Sheep, Goats and Swine on May 11th.
  - If your female animal has previously been shown and received these tags they should not return to tagging days. They do however have to be **re-enrolled each year**. The animal is saved on your profile, you will select “Previously Added Animals.”
  - For a complete list of state requirements consult the 2024 [Indiana 4-H Animal Identification Document](#) linked here. This information is available in the extension office for paper readers.
- **Birthdate and Weight if Applicable**– Cattle, Sheep and Goats will be weighed at Tag In to be a part of the Rate of Gain Competition. Cattle, Sheep, Goats and Swine will be weighed at fair check in.
- **Premises ID**– Premise IDs are issued by the Board of Animal Health and indicate where an animal originated in case there is a contamination in the food supply. This ID is the same for all animals at one location and does not change. 4-H Families can see this number on previously enrolled animals. New Families need to apply for a Premises ID at this website: [www.in.gov/boah/traceability-and-premise-id/indiana-premises-registration/](http://www.in.gov/boah/traceability-and-premise-id/indiana-premises-registration/)
- **County only Forms**– Born and Bred Contests for Cattle and Sheep and Swine need a separate enrollment form that is due at tagging. The forms are in appendix section of your Handbook. There is a Born and Bred selection on 4-H Online, that is for the Indiana State Fair. Each county superintendent has set more restrictive requirements for county participation so we use a paper form.

If you cannot make it to tagging you need to make arrangements for a family member or friend to bring your animals for you or speak with a superintendent or the extension office long before the tagging date.

## May 15th 4-H Online Animal ID Deadline Help Opportunities

### > Enroll your Animals in the Office at Tagging

Drive your trailer behind the extension office and we will be happy to get it all done the same day.

### > Extended Office Hours on May 15th

The office will be open 8-4 pm. Staff will be set up in the community building with computers from 5-8 pm to help, stop by before QLC!

> [Consult this Help document when completing enrollment at home](#)

## 5 Steps For Livestock Exhibitors to be Fair Ready!

- 1 **Properly Identify your Animal** at the tagging days or by ensuring your registered females have proper ID
- 2 **Enroll your Animal on 4-H Online by May 15**
- 3 Complete your required **Indiana 4-H Quality Livestock Care Training** in person or online YQCA Training
- 4 Fill out a Livestock Record Sheet or Attend 1 Educational Program and record on form in your handbook
- 5 Enter your Animals in their Show Classes on **Fair Entry between June 1- June 24**



# 4-H Youth Development



## Indiana 4-H Quality Livestock Care

QLC is required for every Indiana 4-H member showing livestock. If you cannot attend the in person Jefferson County Training you complete Youth for the Quality Care of Livestock (YQCA) online. We do not have login access to this program anymore so you will have to email proof of completion to [copelanb@purdue.edu](mailto:copelanb@purdue.edu). Please register for QLC trainings on 4-H Online. At the door registrations also accepted.

**2nd Training with FAMACHA Training Preceding it– May 15 @ 7 pm** in the Community Bldg. FAMACHA training starts at 5:30 pm. There will be snacks at 6:50 pm.

**Just Added 3rd Training – June 25 @ Noon** in the Community Bldg.

**4th and Last Training – July 1 @ 6 pm** in the Community Bldg.

## Junior Leaders Next Meeting: April 16th at 6:00pm in the Community Building

The Junior Leaders have been busy planning for an eventful summer! If you are unable to attend the normal Junior Leader meetings but would still like to help out with some of our outings and Fair Time Leadership roles contact the 4-H Educator. Junior Leaders is for youth in grades 7-12 who are interested in learning leadership skills and helping with acts of service. Current Junior Leaders should enroll in the Junior Leaders project to receive email reminders and text @c8k6cb to 81010 to join our text group.

**Sign up for these events at the April Meeting or in the links below.**

**April 16th– Fairgrounds Improvement Project**  
Meet at the community building at 6:00 pm

**May 1st– Outing to La Casa Amiga**  
Meet at the Eggleston Community Building Downtown 970 Cross Ave, Madison, IN after school, 3:30ish– 5:00 pm. We will be doing 4-H Project Demonstrations, leading games and educational activities. Sign up to lead a project demo at the April Meeting.

**May 4th– Outing to Madison Farmer’s Market**  
Details in the works! For now save the date. We will be helping with set up for community service and having a booth with an educational activity for kids who attend the market.

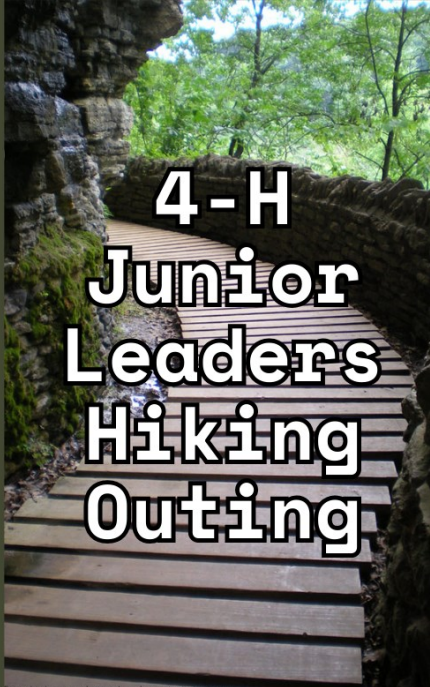
**May 21st– Outing to Boys and Girls Club**  
Meet at the Boys and Girls Club Afterschool, 3:30ish– 5:00pm. We will be doing a similar format to the La Casa Amiga outing. Sign up to lead a project demo at the April Meeting.

**June 11th– Hike & Pitch In Lunch at Clifty**  
We will be taking a guided hike on June 11th at 10 am. To comply with university policies please register on 4-H online events here: [jrleaderhike.4honline.com](http://jrleaderhike.4honline.com). More details will be emailed out closer to the event.

**June 25th– Host Fashion Revue**  
We will need an emcee for Fashion Revue! If you are interested in helping out in anyway sign up at the April Meeting.

**June 29th– Mini 4-H Day Camp**  
It’s all hands on deck for Mini 4-H Camp! We will need help setting up around 9 am and will be done by 3:00 pm. We are especially looking for members to bring large animals to the fairgrounds. In March the group chose “Space” for this years theme. For compliance with University policies I need Junior Leaders to sign up here: [mini4h-daycamp.4honline.com](http://mini4h-daycamp.4honline.com)

**July 2nd– Judge Helpers Needed for Project Check In**  
Junior Leaders help with Judges Dinner, running projects and more. Find Britt in the Community Building for Judges Orientation at 3 pm or talk with Kasie in the old exhibit hall whenever you are done submitting your own projects.



**June 11, 2024**  
**Clifty Falls State Park**

Hiking Trail #7 with Park Naturalist at 10 am

Pitch-In Lunch at Noon (Shelter House Location TBD)

Discounted Admission for Picking up Trash

Register Here: [jrleaderhike.4honline.com](http://jrleaderhike.4honline.com)

**4-H Junior Leaders Hiking Outing**



# 4-H Youth Development



## Project Spotlight: Consumer Clothing

The 4-H Consumer Clothing Project is designed to teach clothing selection, wardrobe planning, care of clothing and personal grooming. Youth will be expected to model their purchased outfit and accessories at the county level. Modeling at state fair is limited to one entry per level from each county. This project is exhibited at our county Fashion Revue with our Sewing Wearable Project and Sewing for Fun project. In the 4-H Sewing Project Participants sew garments or non-wearable items of increasing difficulty as they progress and build their skills over time. The garments range from simple items to a tailored suit or coat. Non-wearable items range from simple items such as basic pillows to duffle bags, window treatments, household organizers, etc.

The Consumer Clothing project has just went through a major revision and has new manuals available online for free! 4-H Project Manuals are used as a supplemental resource in our county and are not required for project completion. But, since the Consumer Clothing Manuals were brought up to date this year we wanted to highlight them as a resource. Access them here: [extension.purdue.edu/4-H/projects/4-h-project-consumer-clothing](https://extension.purdue.edu/4-H/projects/4-h-project-consumer-clothing) or stop by the office for us to print you a copy.



## Jefferson County 4-H Fashion Revue is June 25th

All members enrolled in the various sewing projects are invited to participate in the **Jefferson County 4-H Fashion Revue on June 25<sup>th</sup> at 6:00 p.m.** Registration will begin promptly at 5:30 p.m.

This project teaches youth skills to present themselves in a professional manner by providing an opportunity for youth to model the outfit constructed in the 4-H sewing project. All garments and outfits modeled in Fashion Revue, except consumer clothing entries, must have been constructed by the 4-H member modeling that same garment or outfit.

**Participants will need to turn in a Narration Form for the host to read while the 4-H member models their clothes.** This will

be collected on the 4-H Online event registration. Click here to fill it out: [fashionrevue.4honline.com](https://fashionrevue.4honline.com). Or call or stop by the office for us to fill it out for you.

When you are shopping for sewing projects supplies you can donate at the register to benefit National 4-H at Joann's Crafts!

If you are looking for fun sewing activities to do at home check out National 4-H's clover platform: [4-h.org/clover/about/](https://4-h.org/clover/about/)



## Horse and Pony News- Scholarships and Camp

### Jefferson County Information Meeting

The information meeting about the 2024 season scheduled for April 2 has been postponed to April 4th at 6 pm in the Community building due to weather.

### Area 1 4-H Horse and Pony Show

4-H Horse and Pony members should mark their calendars for the 2024 **Area 1 4-H Horse and Pony Show on June 8th & 9th** in Ripley County. Jefferson County always has great attendance at this area wide event!

### Scholarship Information

Graduating seniors in Area 1 (Bartholomew, Brown, Dearborn, Decatur, Jefferson, Jennings, Ohio, Ripley and Switzerland) who are participating in the Area 1 4-H Horse and

Pony Show are invited to apply for a \$500 scholarship. The application deadline is May 15th. Applications are available in the extension office or from your 4-H Horse and Pony Superintendent, Alyssa Shelton.

### Jefferson County 4-H Horse and Pony Camp

The 4-H Horse and Pony Leaders will once again host a Jefferson County 4-H Horse and Pony Camp at the Fairgrounds on **June 14-15th**. Registration is **required** on 4-H online for this event. Parents if you would like to chaperone talk to Alyssa or the office to become an approved volunteer! Sign up here: [jeffersonhorsecamp.4honline.com](https://jeffersonhorsecamp.4honline.com)



Jefferson County 4-H Horse and Pony Camp



# 4-H Youth Development



## Don't Forget! Livestock Tagging is coming up!

### Beef Tagging—April 20, 2024, 7 -10 am on the Fairgrounds

Any youth planning to show a beef steer, heifer, and or dairy steer at the 4-H County Fair this summer must bring their animals to the Fairgrounds for tagging/identification. Dairy Females and previously shown and tagged females with appropriate registration/identification information do not need to come to tagging.

### Sheep, Goat, Swine Tagging—May 11 2024, 7 -10 am on the Fairgrounds

Save the date! Any youth planning to show sheep, goats, or swine at the 4-H County Fair this summer must bring their animals to the Fairgrounds for tagging/identification. Previously shown females that have the proper ID do not need to come to tagging.

## Where's the Fair Schedule??

### It's in the Handbook!

The fair dates that will be advertised to the public are July 8-13th. Livestock Check In, Project Check in and some shows will happen before those dates. See the full schedule in the handbook or online: [extension.purdue.edu/county/jefferson/docs/handbook24.pdf](https://extension.purdue.edu/county/jefferson/docs/handbook24.pdf)

## FAMACHA CERTIFICATION PROGRAM

SMALL RUMINANT PRODUCERS & FOR 4-H MEMBERS AGE 13 AND UP  
May 15, 2024 at the Jefferson County 4-H Fairgrounds

FAMACHA® is a diagnostic test to help small ruminant producers identify animals that require anthelmintic treatment and those which do not require deworming. The tool is a card that matches lower eyelid color to anemia levels, an indicator of clinical barber pole worm infection.

This training is open to 4-H members and the general public. The event will be followed by a Indiana Quality Livestock Care Training (the required training for Indiana 4-H Livestock Exhibitors) so 4-H Families can get the most out of their evening. **Participants must be 13 years of age to receive the certification.**

**Registration is required to attend and space is limited.**

Register at [FAMACHA.4Honline.com](https://FAMACHA.4Honline.com) before May 6, 2024



FAMACHA Training Cost is \$35 per participant.

Enrolled and Approved Jefferson County 4-H Members may participate *at no cost!* Email [copelanb@purdue.edu](mailto:copelanb@purdue.edu) for a *coupon code before registering!*

Indiana 4-H Quality Livestock Care Training Cost is \$3 per participant. 4-H Participants from any county 4-H program are welcome.



### Agenda

5:00 pm	Check In
5:30- 6:30 pm	FAMACHA Training
6:30- 6:50 pm	Hands On Practice
6:50 pm	Break- General Public Released
7:00- 8:00 pm	Indiana 4-H Quality Livestock Care Training



**FAMACHA Trainer**  
Cora Reinbolt  
Ag and Natural Resources Educator  
Purdue Small Ruminant Team

Questions can be directed to the Purdue Extension Jefferson County Office. Call (812) 265-8919 or email [copelanb@purdue.edu](mailto:copelanb@purdue.edu).



Extension - Jefferson County



### WHAT:

Join us for a day of fun & learning on the Jefferson Co 4-H Fairgrounds!

Mini 4-H is a noncompetitive, exploratory youth development program that gives members the chance to experience 4-H Healthy Living, STEM, and Citizenship programming through hands-on activities.

Mini 4-H is for Youth in Grades K-2

### WHEN:

**Saturday, June 29 from 10am - 2pm** at the Jefferson County 4-H Fairgrounds. Check in is located in the Community Building.

### COST:

This event is free to all Mini 4-H members. Not a 4-H member? It is \$1 to enroll in Mini 4-H for youth in Kindergarten through second grade. Go to [v2.4honline.com](https://v2.4honline.com) to enroll!

### HOW TO REGISTER:

Please register by June 21, 2024 on 4-H Online Events, the link below or by calling the Office

[mini4hdaycamp.4honline.com](https://mini4hdaycamp.4honline.com)

Day Camp will include:

- Games with the 4-H Junior Leaders
- Sack Lunch
- Crafts
- 4-H Project Area Exploration
- Space Themed Learning Activities



## SOUTHEASTERN INDIANA 4-H CAMP

Applications are open now for Youth in Grades 3-7



### JUNE 4-7 AT CAMP HIGHER GROUND

YOUTH IN GRADES 8-12 ATTEND CAMP JUNE 3-7

The 8 counties that make up Area 1 come together every June for the Southeastern Indiana 4-H Camp. Our Camp is unique as it is led by 4-H members in Junior Staff roles. This means members in Grades 9 and above serve as counselors, choose the activities, themes and lead the entire camp experience. Extension Educators and Junior Staff help create a clean, controlled, safe, educational, and fun camp experience for all individuals present.

Camp costs \$110 for Jefferson County 4-H members, which is half price thanks to generous giving and the Tyler Cooley Memorial Fund. Additional Scholarships are available to attend camp. Contact the extension office directly for information.

Camp is an awesome bonding experience for our Jefferson County members and a chance to make friends in surrounding counties. We hope you consider applying! Contact the office to learn more by calling (812) 265-8919 or emailing our educator at [copelanb@purdue.edu](mailto:copelanb@purdue.edu).



REGISTER AT [2024SEI4HCAMP.4HONLINE.COM](https://2024SEI4HCAMP.4HONLINE.COM)  
REGISTRATION DEADLINE IS MAY 1



MISSION  
COMMAND

Purdue Extension- Jefferson County  
Call: (812) 265-8919  
Visit: 3767 W SR 256 Madison, IN 47250



Extension - Jefferson County

Purdue Cooperative Extension is an equal access/equal opportunity institution.

Purdue University Cooperative Extension is an Equal Access/Equal Opportunity Institution



## Combined Homemaker Council and Smyrna Club Meeting

Wednesday, April 17th at Noon at Wirt Baptist Church. It's a pitch in lunch!

Looking to become an Indiana Extension Homemaker? Contact the Jefferson County Extension Office at (812)265-8919 to learn how.

## Extension Homemaker Scholarship Available

The homemakers will award a \$500 Scholarship to a student at each of the surround schools. Ask your school counselor for an application or pick one up at the extension office. **The deadline to apply is April 15th.**



JEFFERSON COUNTY EXTENSION  
HOMEMAKERS



# Quilt Show

May 17th & 18th  
10:00AM-5:00PM



JEFFERSON COUNTY 4-H FAIRGROUNDS  
COMMUNITY BUILDING  
3852 W STATE RD 256, MADISON, IN. 47250

LUNCH, VENDOR CRAFTS AND MORE  
WILL BE AVAILABLE FOR PURCHASE

PROCEEDS FROM THE SHOW GO TO THE JEFFERSON  
COUNTY EXTENSION HOMEMAKERS SCHOLARSHIP FUND

THE COMMUNITY IS INVITED TO ENTER QUILTS FOR  
THE SHOW! QUILTS ARE TO BE ENTERED ON  
THURSDAY, MAY 16TH FROM 3PM-6PM.

PLEASE CONTACT THE PURDUE  
EXTENSION JEFFERSON CO. OFFICE  
AT (812)265-8919 FOR MORE INFO

Admission \$5



## While we are on the topic of Free Money/Stuff for Graduating Seniors..

### To Receive your 4-H Senior Plaque, Gift and Spotlight at Fair

Graduating Seniors in our program please send us the below items by May 15th. You can email copelanb@purdue.edu or use our drop box. A high-quality digital photo of yourself to this drop box from your smart phone or computer: <https://bit.ly/24seniorphoto>

- A brief autobiography to the same link in a word document or through email (2 paragraphs or less) answering the following prompts:

### To Receive a 4-H Graduation Tassel for your Cap and Gown

4-H grads, Indiana 4-H wants to hear about your 4-H experience! Please complete a survey to capture the culmination and impact of your 4-H activities. Claim your tassel at the Extension office! Complete survey here: [bit.ly/IN4Hgrad](https://bit.ly/IN4Hgrad)



## Upcoming Dates

<u>Date</u>	<u>Event</u>	<u>Place</u>	<u>Time</u>
April 4	Horse & Pony Info Mtg.	Community Bldg.	6:00 p.m.
April 4	Fair Board Mtg.	Community Bldg.	7:00 p.m.
April 16	Jr. Leader Mtg.	Community Bldg.	6:00 p.m.
April 17	Homemaker Mtg.	Wirt Baptist Church	noon
April 20	Beef Tagging	Fair Grounds	7-10:00 a.m.
May 1	Jr. Leader Outing	La Casa Amiga	3:30– 5 p.m.
May 4	Jr. Leader Outing	Madison Farmer's Market	
May 6	Extension Board Mtg.	Extension Office	6:00 p.m.
May 11	Sheep, Swine & Goat tagging	Fairgrounds	7-10:00 a.m.
May 15	FAMACHA Certification	Community Bldg.	5:00 p.m.
May 15	Quality Care of Livestock	Community Bldg.	7:00 p.m.
May 17 & 18	Quilt Show	Fairgrounds	10:00 a.m.
May 21	Jr. Leader Outing	Boys & Girls Club	3:30– 5 p.m.
June 8-9	Area 1 4-H Horse & Pony Show	Ripley Co.	
June 11	Jr. Leader Hiking Outing	Clifty Falls	10:00 a.m.
June 14-15	Jefferson County 4-H H&P Camp	Fairgrounds	
June 25	Quality Care of Livestock	Community Bldg.	Noon
June 25	4-H Fashion Review	Community Bldg.	6:00 p.m.
June 29	Mini 4-H Day Camp	Community Bldg.	10:00 a.m.
July 1	Quality Care of Livestock	Community Bldg.	6:00 p.m.

NONPROFIT ORG.  
U.S. POSTAGE  
PAID  
MADISON, INDIANA  
PRMIT No. 15

PURDUE UNIVERSITY COOPERATIVE EXTENSION SERVICE  
Jefferson County  
3767 W SR 256  
Madison, IN 47250-3511  
Cooperating with U.S. Department of Agriculture

