

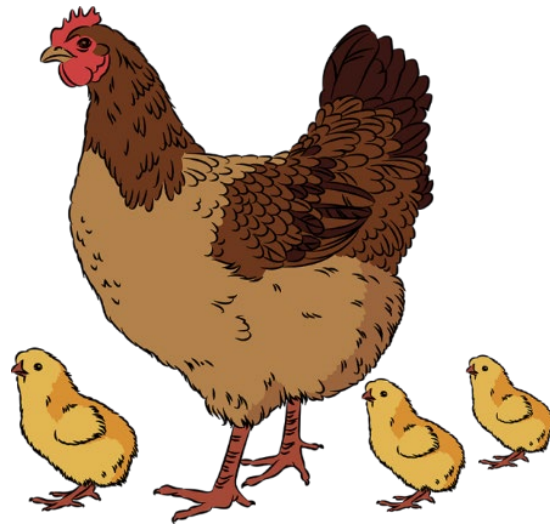


**Daviess COUNTY**



**-MINI 4-H-**

**POULTRY**



**CHICKENS**

Name \_\_\_\_\_ Year 20\_\_\_\_\_

Club \_\_\_\_\_



Extension  
DAVISS COUNTY

"Purdue University Cooperative Extension Service is an equal access/equal opportunity institution."

# -MINI 4-H Poultry-

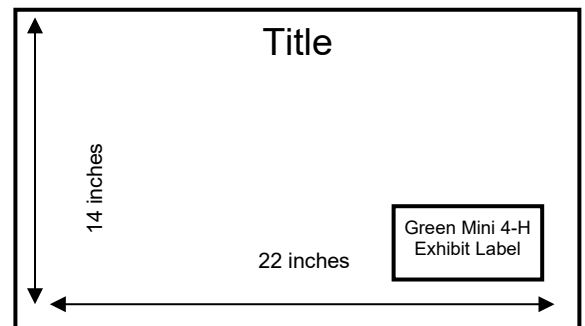
## GENERAL RULES:

1. You must be in K, 1<sup>st</sup>, or 2<sup>nd</sup> grade at the time you sign up for this project.
2. You must enroll in the Mini 4-H Poultry project in 4HOnline.
3. You will receive a Mini 4-H ribbon for completion of your livestock specie's manual and paperwork.
4. Be sure to check out the Indiana State Fair 4-H Poultry Show. When you are a 3<sup>rd</sup> grader and a 4-H Poultry member, you will be eligible to exhibit in the 4-H Poultry classes at the State Fair.

## **OPTIONAL:**

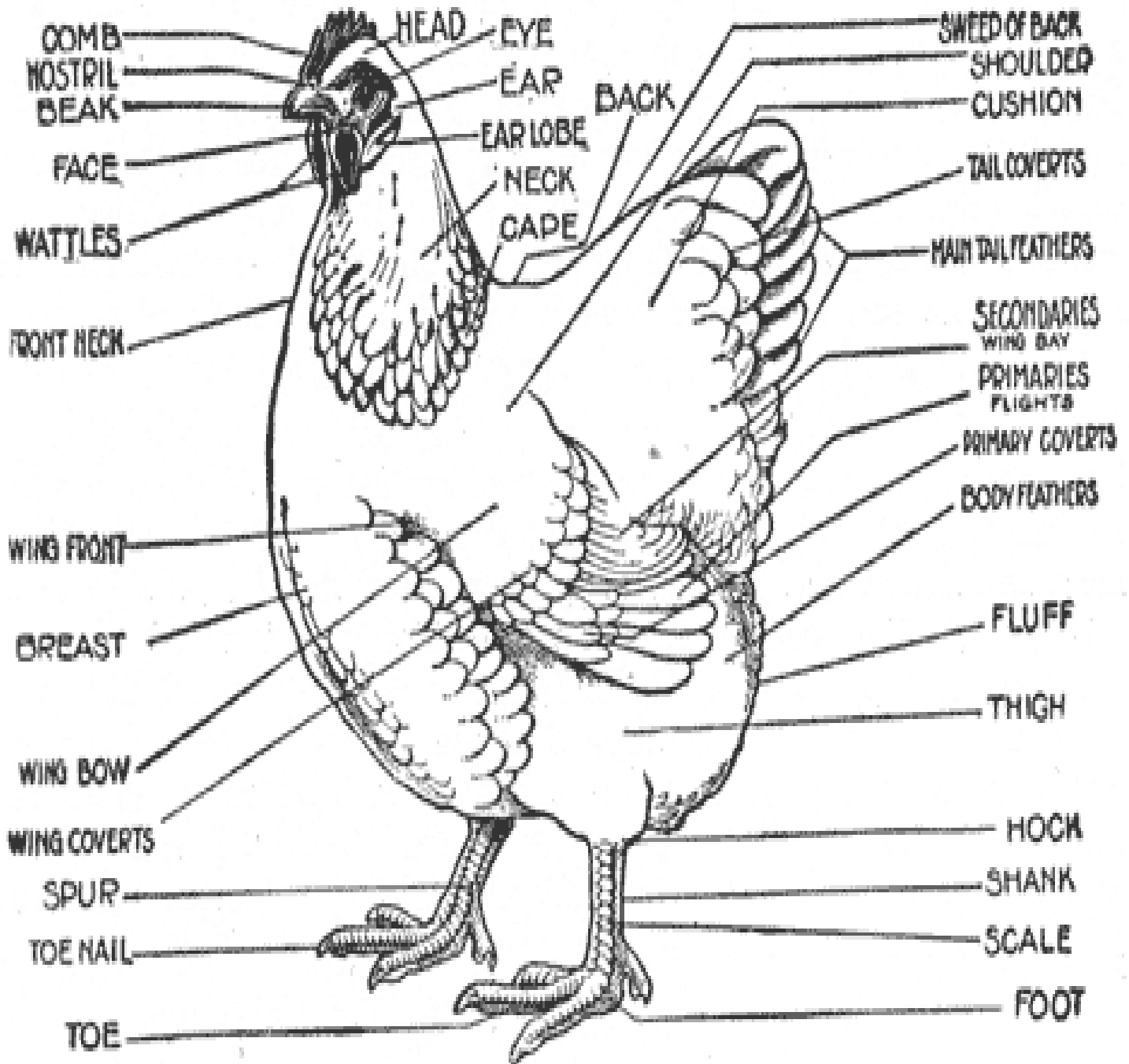
Prepare an educational poster about some phase of Poultry care or management.

- The poster **MUST** be displayed horizontally, 14" x 22"
- Mounted on a firm backing
- Covered in clear plastic
- 4-H exhibit label in the lower right hand corner
- Poster board and plastic sleeves are available at the Miami Co. Extension Office.



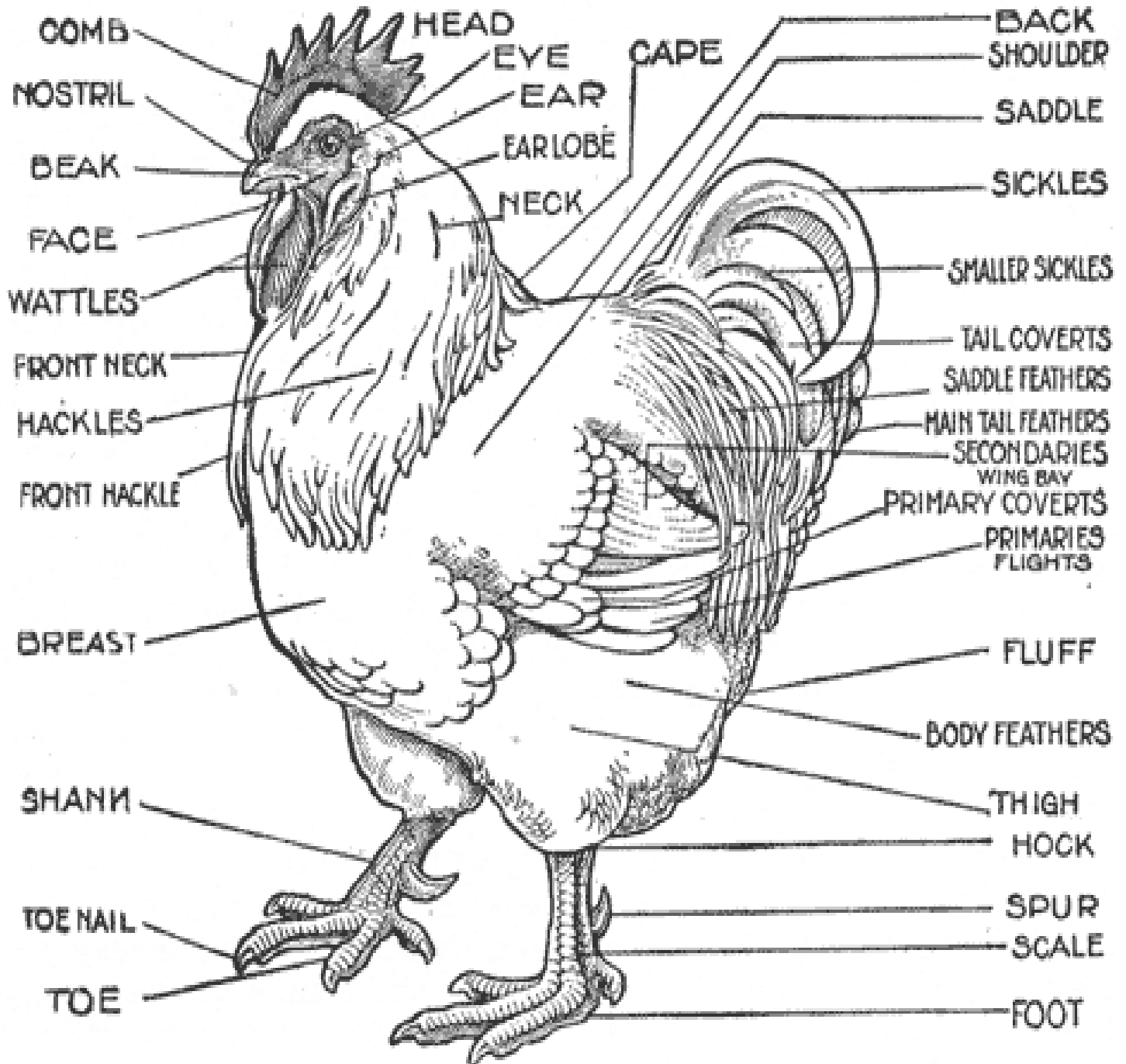
# -PARTS OF THE HEN CHICKEN-

(FEMALE)



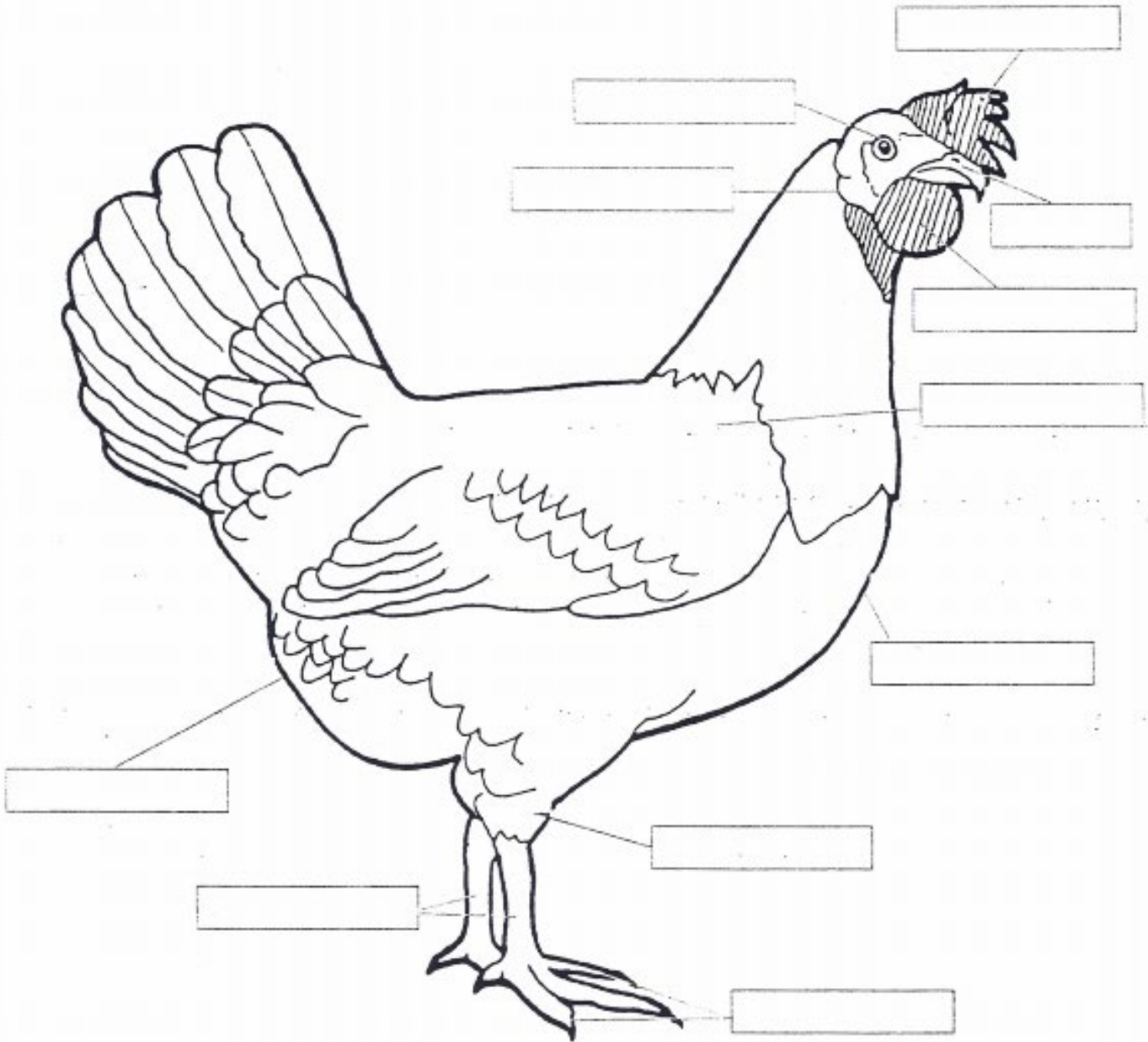
# -PARTS OF THE ROOSTER-

(MALE)



# -PARTS OF THE CHICKEN-

Color and label the parts of a chicken.



Use each word only once:

beak  
eye  
toes

breast  
hock  
vent

comb  
shanks  
wattles

ear lobe  
shoulder

# -WORD SEARCH-



Find the hidden words in the letters grouped below. Circle them.

|          |         |       |           |
|----------|---------|-------|-----------|
| Brooder  | Corn    | Fowl  | Incubator |
| Broiler  | Farmer  | Fryer | Poultry   |
| Chicks   | Feather | Hen   | Pullet    |
| Chickens | Feed    | Layer | Rooster   |
|          | Flock   |       |           |

P S N F O I N C U B A T O R E  
R O L O T R S D E F N S B C M  
N B U W S N T J L C H I C K S  
F G T L A Y E R H O D B R T V  
B F P R T L B U N R G H B A D  
G L E B S R P G L N I F E E D  
C O I N F R Y E R T A E A H O  
H C J C B I F L O C K A T A U  
I K L M A E B F A J O T E T B  
C O U P L E W A F A O H R C L  
K B E U H X B R O I L E R H E  
E C F L D R Z M W C D R E E P  
N G M L U K L E L T V S M R E  
A N H E N M B R O O D E R Y A  
R D I T E H N N E T T E R S T  
S V T N B E A R O O S T E R S

# -EGG MAZE: COUNTING BY TWOS-

Help the hen get her nest by finding the path that counts by twos.  
Draw a line to connect the path.



A maze of numbers in ovals. The numbers are: 9, 5, 4, 2, 6, 3, 11, 18, 8, 16, 15, 14, 20, 10, 12. The goal is to find a path starting from the hen and ending at the nest, counting by twos.