

I'M A HOOSIER



Clay County Mini 4-H

Project Exhibit Tag

I'm a Hoosier

Name: _____

Age: _____

In the Mini 4-H project, "I'm a Hoosier!" you will learn about some of the symbols from Indiana and many interesting facts about the state where you live!



The town where you live is part of a larger area called a county. The county where you live is part of a larger area called a state. In the state of Indiana there are 92 counties!

What is the name of the town where you live?



That town is in Clay County.
Clay County is in the state of Indiana.
Indiana is in the United States of America.



You will have fun learning about the state of Indiana while making an exhibit for the fair. What do you need to exhibit? Simply choose an activity to do. Read over the exhibit ideas with your helper (mom, dad, grandparent, brother, sister...) and decide what you would like to complete and bring to the fair.

Come on! Let's learn about the great state of INDIANA!!!

IT'S A FACT!

Indiana farmers produce more popcorn than in any other state in the United States!



IT'S A FACT!

Holiday World, once known as Santa Claus Land, was the world's first theme park!



IT'S A FACT!

The term "wabash" is a Native American word for limestone.



IT'S A FACT



John Chapman, more commonly known as Johnny Appleseed, traveled the Midwest planting apple seeds that would grow into beautiful apple trees.

He died in March, 1845 near Fort Wayne. His gravesite is located in Johnny Appleseed Park located in Fort Wayne, Indiana.

ACTIVITY 1: STATE SYMBOLS

In 4-H, there is one basic symbol: the 4-leaf clover with an "H" in each leaf. The state of Indiana has many symbols. State symbols are special and abundant in that particular state. In this activity you will learn about some common and uncommon state symbols.



STATE FLOWER: PEONY

Peonies bloom in late May or early June. They tend to be bushy plants that have blossoms in various shades of red, pink, and white. You may notice ants on peony blossoms. When peonies grow buds, the sweet nectar attracts the ants. The ants actually separate the flower petals to get more nectar. These ants are actually helping the peonies bloom! The peony became the state flower in 1957.

STATE TREE: TULIP TREE

Trees are a daily reminder that our roots should run deep if we want to grow straight and tall! The tulip tree is sometimes called the yellow poplar. It can sometimes grow to be 200 feet tall! How tall are you? Tulip trees are the tallest broadleaf trees in the eastern region of North America. The Tulip Tree became the state tree in 1931. Here is what the leaf of the tulip tree looks like.



STATE BIRD: CARDINAL

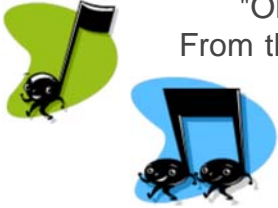
The cardinal is a beautiful bird that lives in Indiana year-round. The male (boy) cardinal is a bright red color while the female (girl) is a brown color with a reddish brown crest. The cardinal's crest is the feathers that point out from the top of its head. Have you seen a cardinal in your yard? Have you ever seen a pair (boy and girl) of cardinals? The cardinal was named the state bird in 1933.

IT'S A FACT!

The Indy 500 race track was built in 1909 from 3,200,000 paving bricks! WOW!!! The first race was in 1911

STATE SONG: "ON THE BANKS OF THE WABASH FAR AWAY"

The state song was written, words and music, by Paul Dresser. Mr. Dresser was born in 1858 in Terre Haute, Indiana. His childhood home is located in Fairbanks Park along 1st Street and just south of the Vigo County Courthouse. Most people will recognize the chorus of this famous song.....



"Oh, the moonlight's fair tonight along the Wabash,
From the fields there comes the breath of new-mown hay,
Through the sycamores the candlelight is gleaming,
On the banks of the Wabash far away."



STATE ROCK: LIMESTONE

Limestone is found in central and southern Indiana. It is mined from quarries and is used in construction of buildings all across the United States. The Vermillion County Courthouse in Newport is made of Indiana limestone from Bedford, a city in Lawrence County. The state capitol building in Indianapolis is made from Indiana limestone. Indiana limestone is used all over the world! Buildings that you may have heard of or visited that are made from Indiana limestone include: the Empire State Building and Rockefeller Center in New York City as well as the Pentagon, Washington National Cathedral and the U.S. Treasury in Washington D.C. Many government buildings in Indiana and all over the United States are made from Indiana limestone.



WHAT DO YOU THINK?

Did you know that a person from Indiana is a "Hoosier? "Hoosier" is a nickname for a person from Indiana. Nobody knows for sure where this name started. Here are a few Ideas.....

"When Indiana pioneers had a visitor knock on their cabin door, they would answer, "Who's -there?" Through -the thick, wooden cabin door it may have sounded like "Hoosier?"

"Another legend is that Indiana rivermen were very good at beating or "hushing" their enemies in a fight that they became known as "hushers." Over time, this turned in to "Hoosiers."

"Another idea is that Samuel Hoosier, -the boss for a canal-building crew, only hired men from Indiana. These men were called "Hoosier's men."

EXHIBIT OPTIONS: CHOOSE ONE OF THE FOLLOWING.....

1. Make a poster about Indiana's symbols and include at least 3 of the 5 symbols that you learned about. Mini 4-H posters should be 14" x 22". Make sure it's horizontal (sideways). Title your poster: "Indiana's Symbols". You can find larger pictures of the symbols in this manual. Color and cut these out to include on your poster.
2. Have your helper help you find the following Indiana symbols: tree, flower, rock, bird. Take pictures of them. Include these pictures on a poster. Be sure to tell where you took the picture and label each of the symbols. Mini 4-H posters should be 14" x 22". Make sure it's horizontal (sideways). Title your poster: "Indiana's Symbols".
3. Find the page with the large-print version of the state song. Make a poster about the state song. You may use this printed version or recopy it in your own handwriting. Around the lyrics (words to the song) draw and color pictures about Indiana. The words in the song may help give you some ideas. Mini 4-H posters should be 14" x 22". Make sure it's horizontal (sideways). Title your poster: "Indiana's State Song".
4. Locate a piece of Indiana limestone. Display it nicely in a small shoebox and label it: "Limestone: Indiana's Rock".
5. Locate some peonies. With permission, cut at least one and display it in a container of water. Label it: "Peony: Indiana's Flower"
6. Locate a tulip tree. If possible, find some nice leaves on the ground; if necessary, pinch a few leaves from the tree. Press these leaves by putting each one between two paper towels and closing tightly in a thick book. Leave them this way for at least one week. When pressed, display on a poster and label it: "Tulip Tree: Indiana's Tree".
7. Locate a tulip tree. If possible, find some nice leaves on the ground; if necessary, pinch a few leaves from the tree. You'll need some plain paper (construction paper .may be too thick) and some crayons. Put a leaf upside down (vein side up) on a table. Put the piece of paper on top. Color over the top of the leaf being very careful not to move the paper or leaf while coloring. Before long you'll see the shape of the leaf and each vein through your crayon rubbing. Display these crayon rubbings in a frame or on a poster. Label it: "Tulip Tree: Indiana's Tree".
8. Ask your school music teacher, a pianist at church, or someone you know who could share the tune to "On the Banks of the Wabash Far Away" with you. Make a cassette tape, CD, or video recording (whatever you have available) of you singing this song.

IT'S A FACT!

Indiana means "Land of the Indians."



Indiana State Song...



ON THE BANKS OF THE WABASH, FARAWAY

Round my Indiana homestead wave the cornfield,
In the distance loom the woodlands clear and cool.
Often times my thoughts revert to scenes of childhood,
Where I first received my lessons, nature's school.
 But one thing there is missing in the picture,
 Without her face it seems so incomplete.
 I long to see my mother in the doorway,
 As she stood there years ago, her boy to greet!

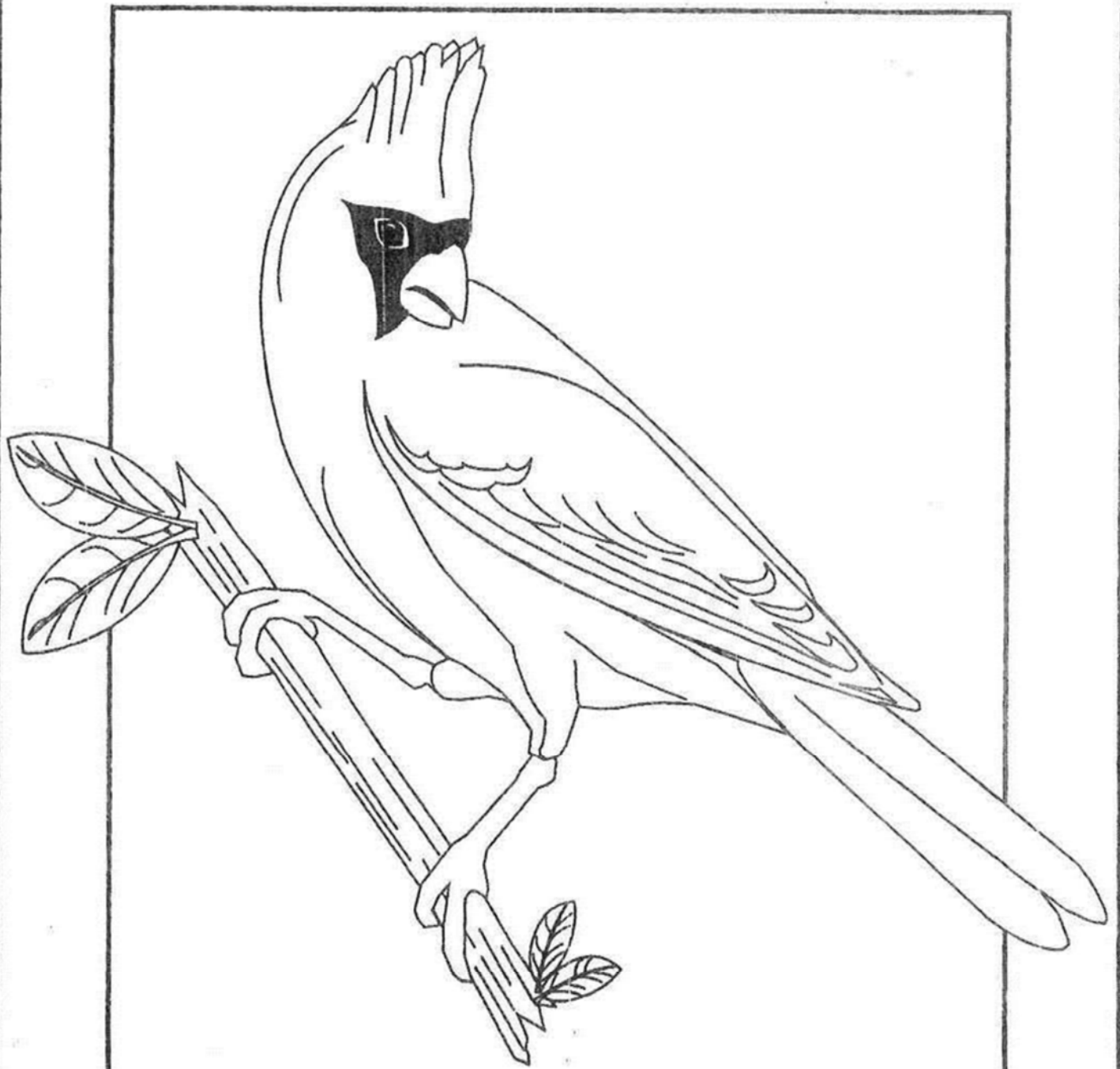
Chorus

Oh, the moonlight's fair tonight along the Wabash,
From the fields there comes the breath of new mown hay.
Thro' the sycamores the candle lights are gleaming
 On the banks of the Wabash, far away.

Many years have passed since I strolled by the river,
Arm in arm with sweetheart Mary by my side.
 It was there I tried to tell her that I loved her,
 It was there I begged of her to be my bride.
Long years have passed since I strolled thro' the churchyard,
 She's sleeping there my angel Mary, dear.
 I loved her but she thought I didn't mean it,
 Still I'd give my future were she only here.

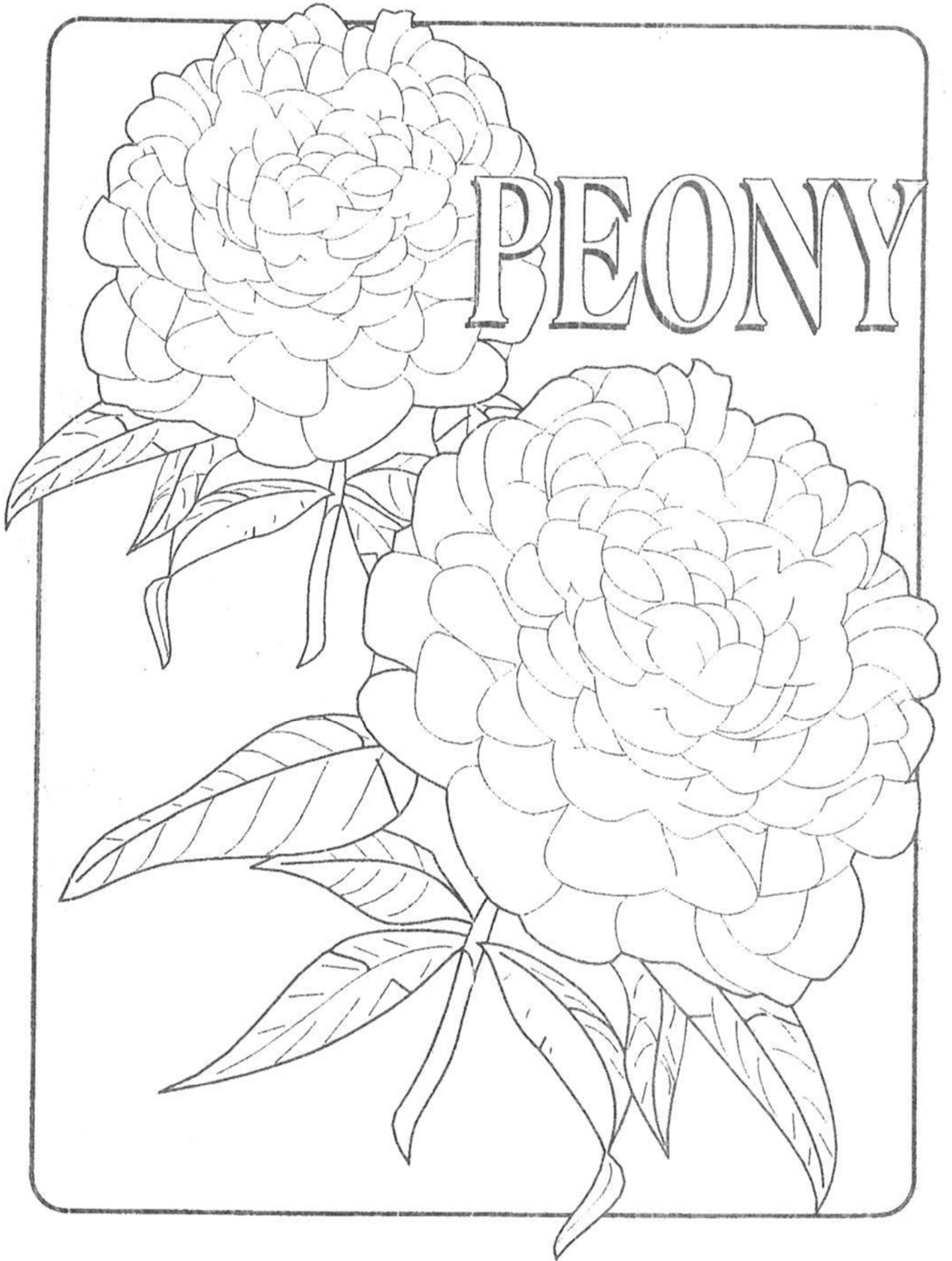
-Paul Dresser





CARDINAL

PEONY



TULIP TREE



ACTIVITY 2: INDIANA'S FLAG

Did you know that each state has its own flag? It's true! Everybody recognizes the American flag. Have you ever seen Indiana's flag? Here is a picture of the flag.



Indiana's flag was adopted in 1917. The colors of the flag are blue and a golden yellow. It shows a flaming golden torch and golden stars centered on a blue background. The torch symbolizes liberty and wisdom. (Have you ever seen a picture of the Statue of Liberty in New York City? She is holding a torch, too!) The rays coming out from the torch symbolize how liberty and wisdom affect many things.



The 13 stars that make a complete circle around the torch stand for the original 13 states. The 5 stars that seem to be smiling represent the next five states to enter the Union.
 $13 + 5 = 18$



The one star above the flame represents Indiana and even has the word "Indiana" written above it. Indiana was the 19th state to enter the Union. Indiana became the 19th state on December 11th, 1816.



You will always find the Indiana flag flying below or lower than the American flag. The American flag should always be the highest flag displayed.

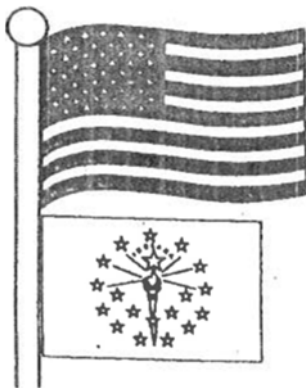


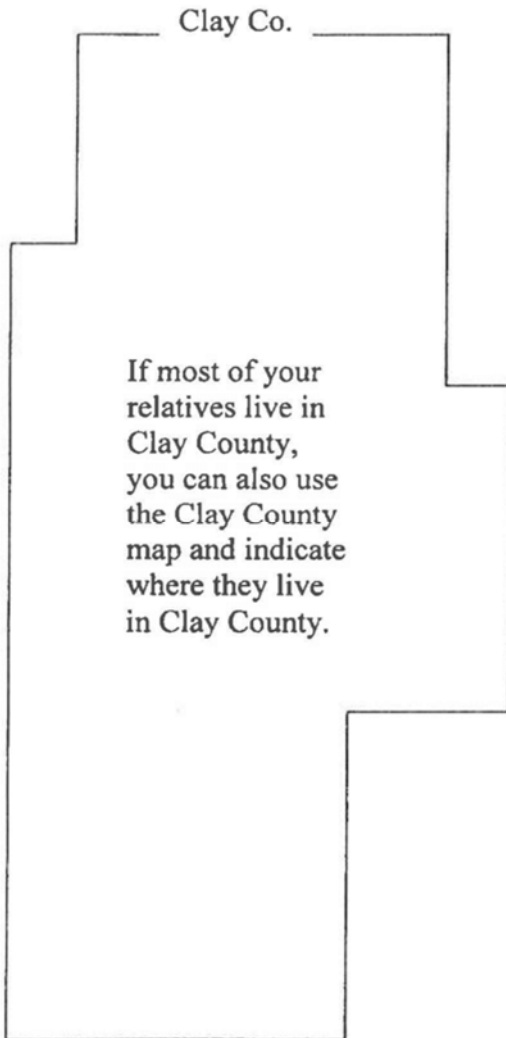
EXHIBIT IDEA: Find the full size picture of the Indiana flag. Color and cut it out. Around the sides of the flag, write on your poster what the stars, torch, and rays symbolize. Mini 4-H posters should be 14" x 22". Make sure it's horizontal (sideways). Title your poster: Indiana's Flag.

IT'S A FACT

Jim Davis, the creator of Garfield comic strip, is from Indiana! He was also a 4-H member in his younger years!



ACTIVITY 3: WHERE IN INDIANA ARE THEY?



If you live in Indiana, chances are that you have relatives (cousins, aunts, uncles, grandparents, etc.) or family friends who also live in Indiana.

Do you know the name of the town or city where they live? Do you know the name of the county where they live? Ask your helper to help you identify the counties in Indiana where some of your family friends and/or relatives live.

EXHIBIT IDEAS: Find the enclosed map that has the counties outlined. Color the county where you live. Color the county or counties where your relatives or friends live. Attach your map of Indiana to a poster. Mini 4-H posters should be 14" x 22". Make sure it's horizontal (sideways). Title your poster: "Indiana: Home Sweet Home". In the space on the poster around your map, indicate who lives in the counties that you colored.

Example: Uncle John and Aunt Sue- Howard Co. (Co. is the abbreviation for county). If you'd like to identify the town or city where they live, that is up to you.

If you have several people to identify within Clay County, indicate which town they live in or closest to.

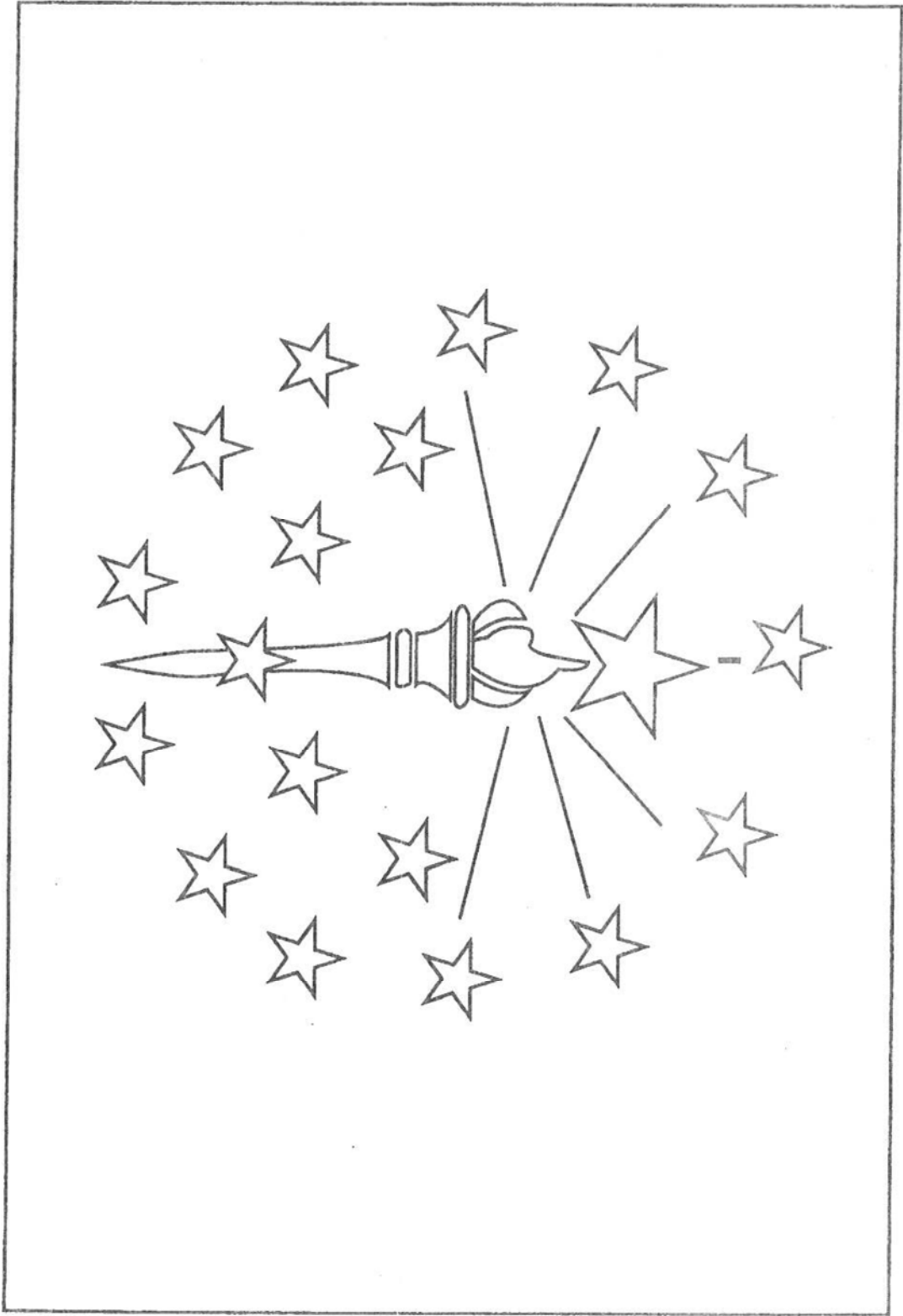
Example: Grandma Helen- Cory; Grandma Lois- Poland; Uncle Bob and Aunt Betty- Staunton.

IT'S A FACT

Wabash, Indiana was the first electrically lighted city in the United States!

IT'S A FACT

There are only 3 Rolls-Royce car dealerships in the United States-one in New York City, one in Beverly Hills, California, and one in Zionsville, Indiana!



A Z A - D Z - Y - Z C O U N T Y A C

