



MINI 4-H PROGRAM

COLLECTIONS PROJECT MANUAL

Clay County Cooperative Extension Service
Mini 4-H Program
6656 N State Road 59
Brazil, IN 47834
(812) 448-9041

PROJECT EXHIBIT TAG
Mini Collections

Name: _____

Age: _____

COLLECTIONS

Collections can be defined as “the gathering of similar articles, objects, paraphernalia, items, etc.” Many collections can be begun on the spur of the moment, while some may take serious consideration before beginning. A collection can be of several different types of materials but should pertain to one subject area. Below is just a short list of the wide variety of collections you can choose from. You may choose to begin your collection from the list below or you can use your own idea.

SUGGESTIONS

Arrowheads	Flowers	Pop Cans
Baseball Cards	Football Cards	Postcards
Baskets	Furniture	Posters
Bells	Hats	Rocks
Books	Jewelry	Salt & Pepper Shakers
Bottle Caps	Leaves	Shells
Bottles	Marbles	Spoons
Bumper Stickers	Matchbooks	Stamps
Buttons	Miniatures	Stuffed Animals
Campaign Buttons	Models	Sunglasses
Coffee Mugs	Napkins	Tea Pots
Coins	Ornaments	Thimbles
Cookie Jars	Paper Dolls	Tins
Cups & Saucers	Pens/Pencils	Trains
Dishes	Piggy Banks	
Dolls	Pitchers	
Figurines	Pocket Knives	

As you can see from the list above, collections can be about anything your imagination can come up with as long as you have an interest in the collection.

For more help with your collection, the public library is a good resource. Books are available on collecting items such as stamps, buttons, coins, rocks and many more. These books have valuable information regarding identification, value and may contain several interesting facts about your collection.

Another important part of your collection is the way it is documented. It is very important to label your collection articles accurately and neatly. Be sure to keep important information such as the date of purchase, cost, and where you purchased the item. Also, it is very important to keep the item in the original container/package. This will add to the value of your collection in the future.

Displaying your collection is also a very important part of this project. Be sure to arrange your collection in an area where there will be enough space to add to it. A sturdy cardboard box, shelves, a notebook, a bulletin board, a display case or a drawer would be appropriate. Select where and how you want to display your collection wisely so that members of your family and your friends will be able to view your collection that is special to you.

If you display and arrange your collection attractively, you will be proud to share it with your family and friends. Sometimes, if they know of your interest, perhaps they will contribute items to your collection.

Also, another important part of a collection is keeping track of the name of the article, date of purchase, cost/value and where you purchased the item. Also, if purchased, you should save your receipt. You should get a notebook to use for this purpose. As you add items to your collection, you should keep this information in the notebook.

Remember, collecting is a hobby. Have fun and be imaginative!

HAPPY COLLECTING!!!!

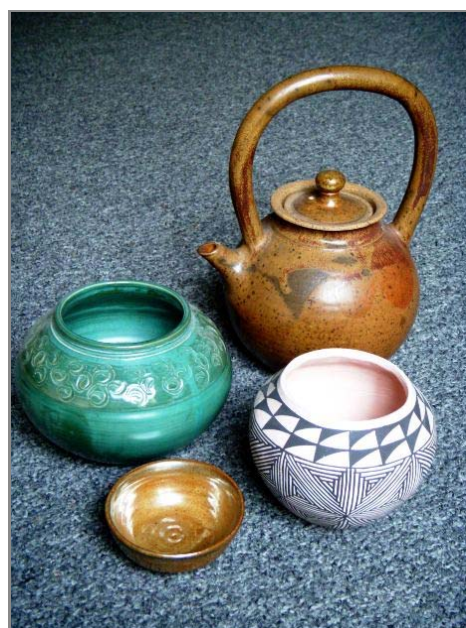


EXHIBIT REQUIREMENTS

NO "LIVE" EXHIBIT'S!!!!

1. You will exhibit:

3 items of your collection

2. Display your collection for the county fair in one of the following ways:
 - a. On a poster, 11" x 14", covered with plastic.
 - b. In a three-ring notebook
 - c. You may take photographs of the required number of items you must exhibit and display the photographs in a notebook or poster as described above in "a or b".

3. You must label each item in your display and tell the name of the item.

NOTE: The Clay County 4H Council, Inc. will not be responsible for your exhibit at the county fair. We will do everything possible to insure your project's safety, but if you prefer not to take the risk of theft or damage, you should exhibit your project as described in item "3c" above.



"COLLECTION" RECORD SHEET MINI 4-H PROGRAM



Name _____ Age _____

Address _____

Please answer the following questions. Attach this completed record sheet to your project. See you at the fair!!!

1. My collection is of: _____

2. List the three items you are exhibiting and complete the chart:

NAME OF ITEM EXHIBITING	WHERE RECEIVED	ESTIMATED VALUE
1.		
2.		
3.		

3. Why did you start collecting the items you are exhibiting?

Parent's signature: _____ Date: _____